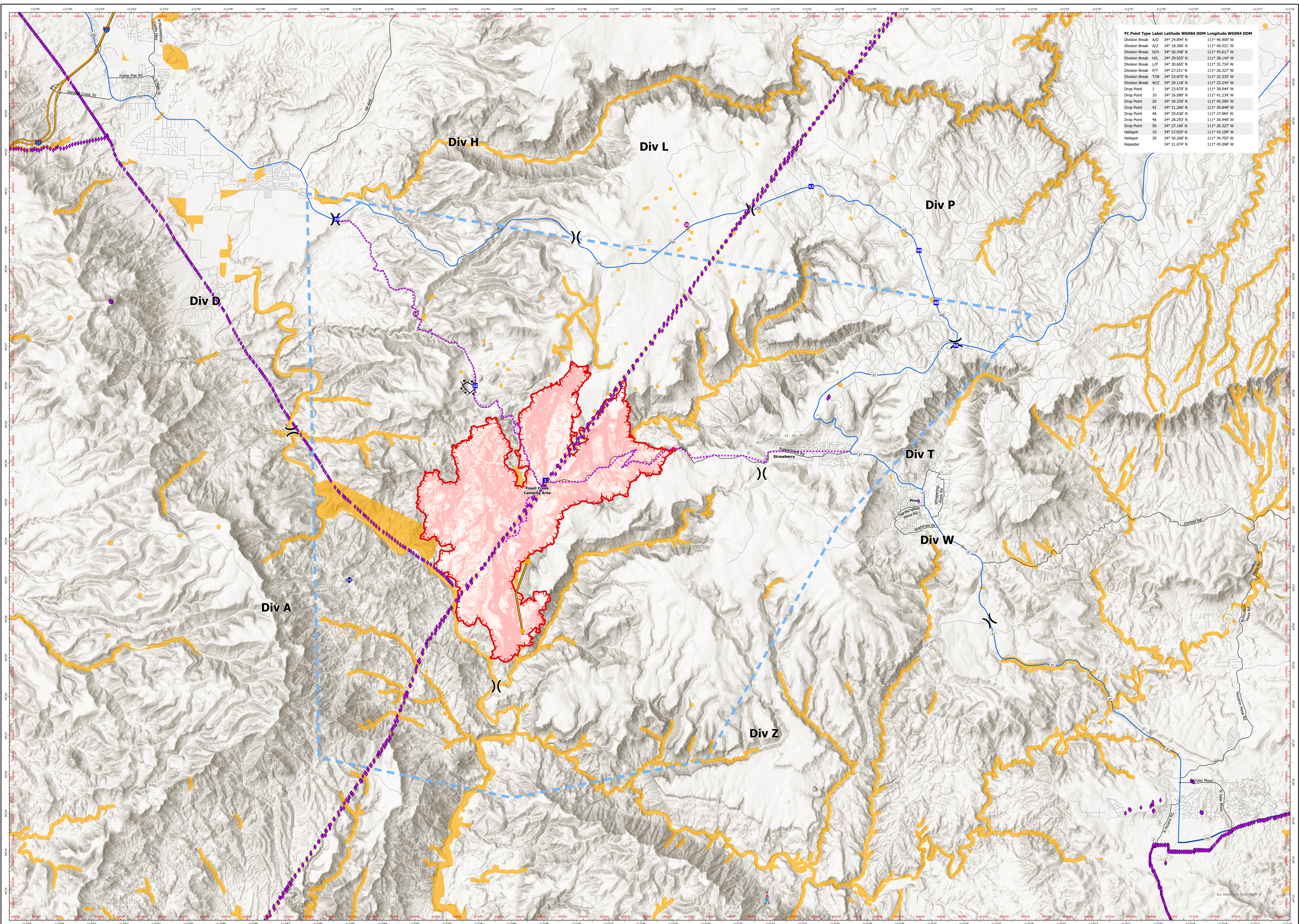
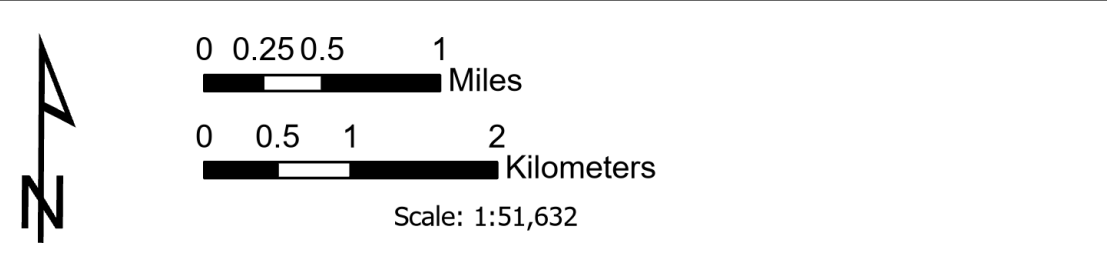


FC Point Type	Label	Latitude WGS84 DDM	Longitude WGS84 DDM
Division Break	A/D	34° 24.894' N	111° 46.909' W
Division Break	A/Z	34° 18.366' N	111° 40.521' W
Division Break	D/H	34° 30.348' N	111° 45.617' W
Division Break	H/L	34° 29.957' N	111° 38.348' W
Division Break	L/P	34° 30.667' N	111° 32.734' W
Division Break	P/T	34° 27.251' N	111° 26.327' W
Division Break	T/W	34° 23.875' N	111° 32.335' W
Division Break	W/Z	34° 20.118' N	111° 25.244' W
Drop Point	1	34° 23.670' N	111° 39.044' W
Drop Point	10	34° 26.089' N	111° 41.234' W
Drop Point	20	34° 30.330' N	111° 45.889' W
Drop Point	42	34° 31.266' N	111° 30.848' W
Drop Point	46	34° 29.636' N	111° 27.484' W
Drop Point	48	34° 28.293' N	111° 26.948' W
Drop Point	50	34° 27.195' N	111° 26.327' W
Helipoint	10	34° 27.029' N	111° 43.188' W
Helipoint	30	34° 30.268' N	111° 34.703' W
Repeater		34° 21.074' N	111° 45.098' W



Backbone Air Operations
 AZ-COF00642
 Day Operational Period 6/19/2021

GIS Acres 17,126
 Acres from IR (geodetic)
 6/19/2021 10:00:00
 NAD 1983 UTM Zone 12N
 Map Created 6/19/2021 6:17:40 PM (UTC-7)



- Vertical Obstruction
- Towers
- Transmission Lines
- Helipoint
- Drop Point
- Division Break
- Repeater
- Completed Burnout
- Completed Hand Line
- Planned Dozer Line
- Management Action Point
- Fire Edge
- Temporary Flight Restriction
- Wildfire Daily Fire Perimeter
- Retardant Avoidance
- Route

