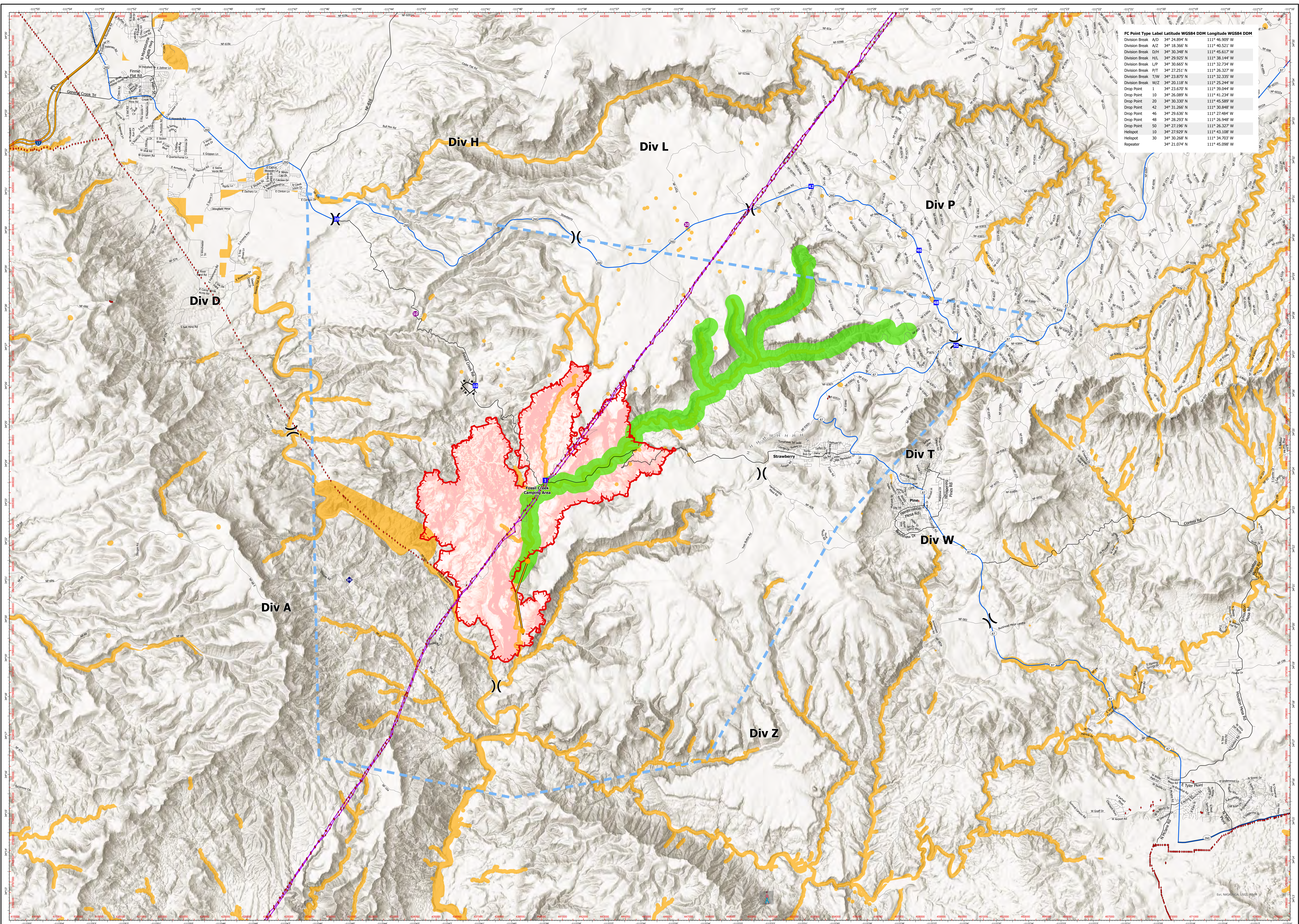


FC Point Type	Label	Latitude WGS84 DDM	Longitude WGS84 DDM
Division Break	A/D	34° 24.894' N	111° 46.909' W
Division Break	A/Z	34° 18.366' N	111° 40.521' W
Division Break	D/H	34° 30.348' N	111° 45.617' W
Division Break	H/L	34° 29.925' N	111° 38.544' W
Division Break	L/P	34° 30.665' N	111° 32.734' W
Division Break	P/T	34° 23.251' N	111° 26.327' W
Division Break	T/W	34° 23.875' N	111° 32.335' W
Division Break	W/Z	34° 20.118' N	111° 25.244' W
Drop Point	1	34° 23.670' N	111° 39.044' W
Drop Point	10	34° 26.009' N	111° 41.234' W
Drop Point	20	34° 30.339' N	111° 45.589' W
Drop Point	42	34° 31.266' N	111° 30.848' W
Drop Point	46	34° 29.636' N	111° 27.484' W
Drop Point	48	34° 28.293' N	111° 26.948' W
Drop Point	50	34° 27.196' N	111° 26.327' W
Helispot	10	34° 27.929' N	111° 43.108' W
Helispot	30	34° 30.268' N	111° 34.703' W
Repeater		34° 21.074' N	111° 45.098' W



Backbone Air Operations  
 AZ-CO00642  
 Day Operational Period 6/19/2021

GIS Acres 17,126  
 Acres from IR (geoidsc)  
 6/19/2021 1:00:00  
 NAD 1983 UTM Zone 12N  
 Map Created 6/19/2021 8:26 AM by: mls@backbone

- Vertical Obstruction Point
- Vertical Obstruction Line
- Helispot
- ⌋ Division Break
- ⌋ Drop Point
- ⌋ Repeater
- Completed Burnout
- Completed Hand Line
- Planned Dozer Line
- Management Action Point
- Temporary Flight Restriction
- Fire Edge
- Wildfire Daily Fire Perimeter
- Retardant Avoidance
- Fossil Creek Retardant Avoidance

