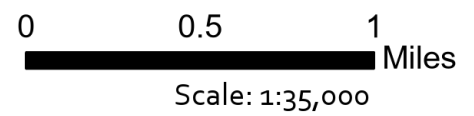


**Div H**

Backbone  
 Incident IAP  
 AZ-COF000642  
 Day Operational Period 6/22/2021

GIS Acres 34,180  
 6/21/2021 13:15  
 Acres Firewatch (geo)



Map Created 6/21/2021 7:48 PM by rdrcrawford

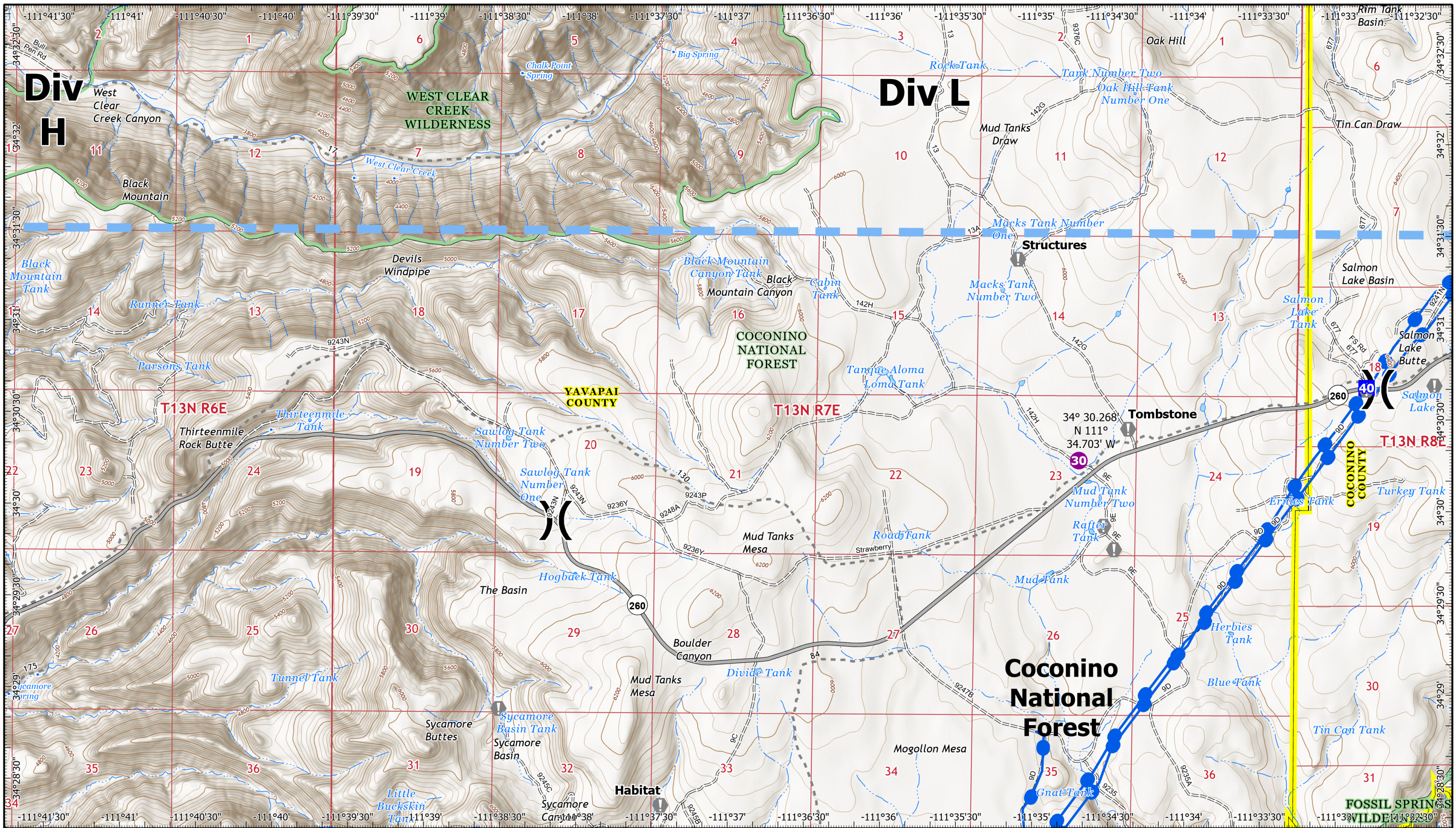


- Dip Site
- ⌘ Division Break
- Drop Point
- ⊠ Closure
- Value at Risk
- ◆ Internet Access
- ⊠ Completed Dozer Line
- R Completed Road as Line
- ⊠ Planned Dozer Line
- Other
- Route
- Temporary Flight Restriction
- Transmission Lines
- Administrative Forest

1	2	3
4	5	6
7	8	9
10	11	12

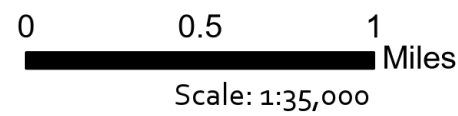
Page 1





**Backbone**  
**Incident IAP**  
**AZ-COF000642**  
**Day Operational Period 6/22/2021**

GIS Acres 34,180  
 6/21/2021 13:15  
 Acres Firewatch (geo)



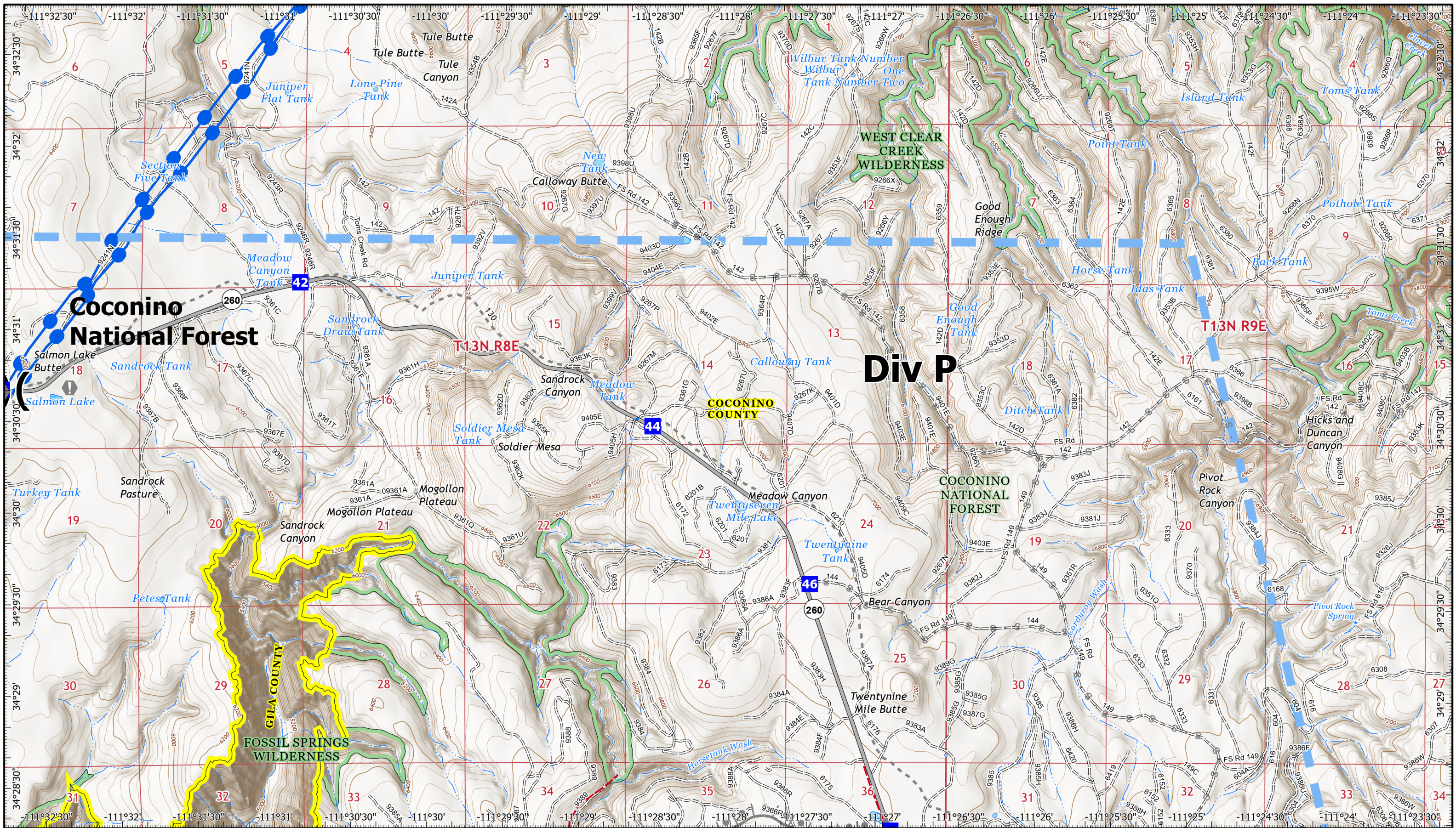
Map Created 6/21/2021 7:48 PM by rdrcrawford



- Helispot
- ⊗ Division Break
- Drop Point
- Ⓢ Value at Risk
- ▬ Temporary Flight Restriction
- Transmission Lines
- ▬ Administrative Forest

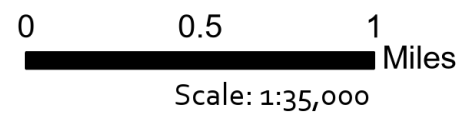
1	2	3
4	5	6
7	8	9
10	11	12





**Backbone**  
**Incident IAP**  
**AZ-COF000642**  
**Day Operational Period 6/22/2021**

GIS Acres 34,180  
 6/21/2021 13:15  
 Acres Firewatch (geo)

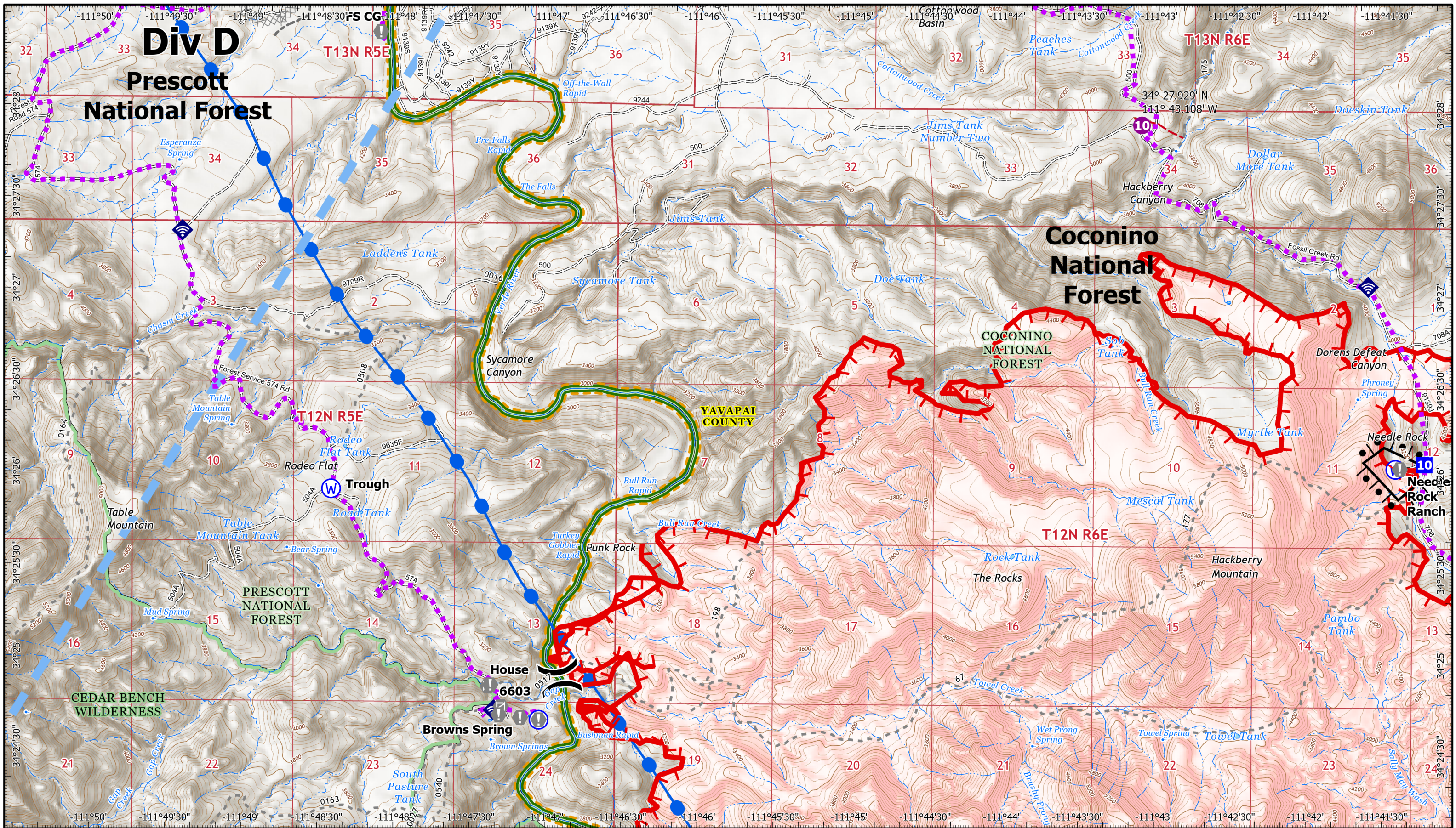


Map Created 6/21/2021 7:48 PM by rdrcrawford

- Division Break
- Drop Point
- Value at Risk
- Planned Burnout
- Planned Secondary Line
- Fence
- Temporary Flight Restriction
- Transmission Lines
- Administrative Forest

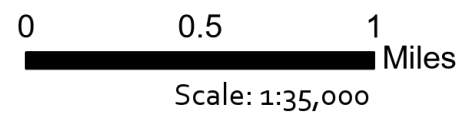
1	2	3
4	5	6
7	8	9
10	11	12





**Backbone Incident IAP**  
**AZ-COF000642**  
 Day Operational Period 6/22/2021

GIS Acres 34,180  
 6/21/2021 13:15  
 Acres Firewatch (geo)

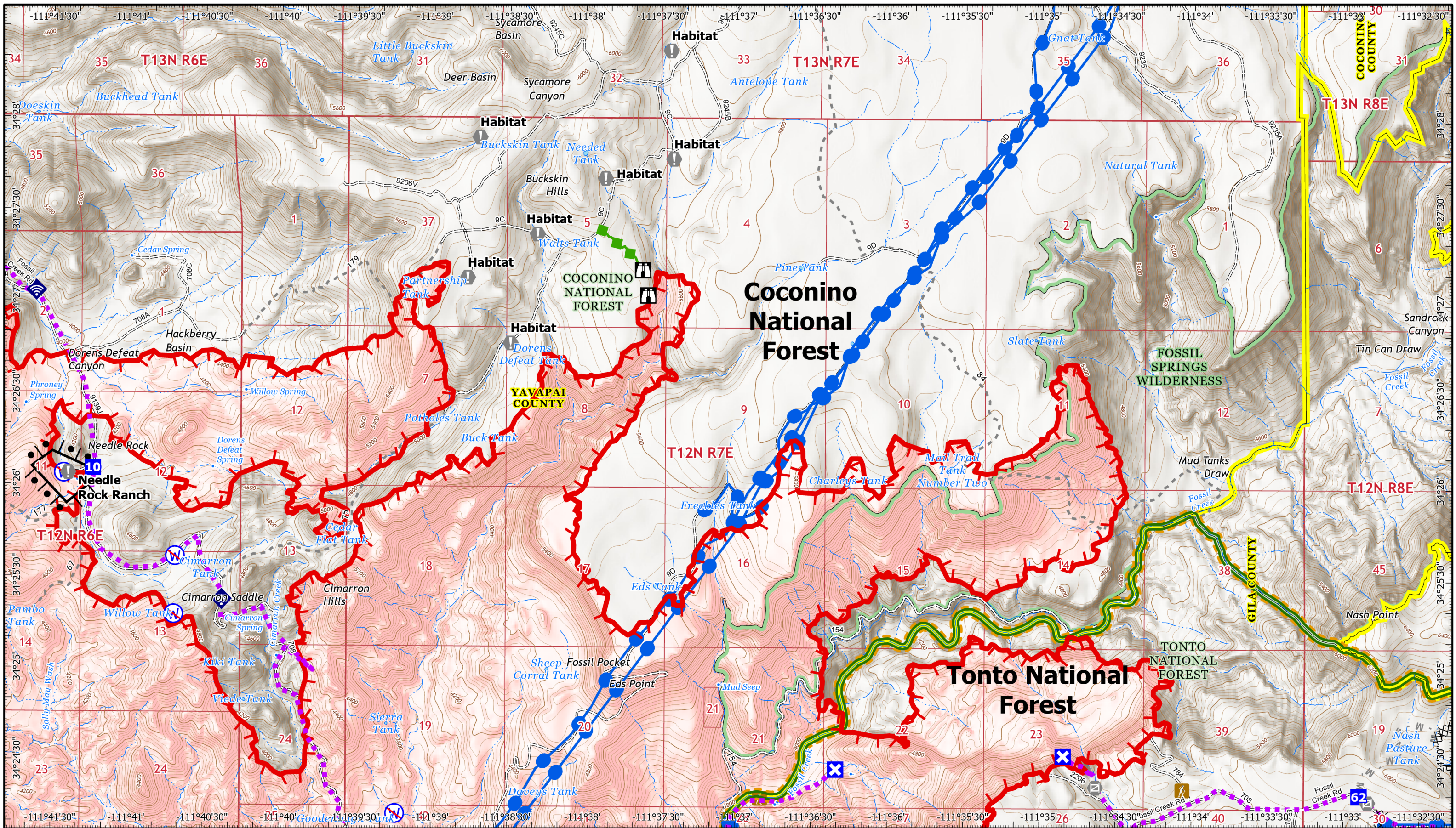


Map Created 6/21/2021 7:48 PM by rdrcrawford

- Helispot
- ⊗ Division Break
- Drop Point
- Value at Risk
- ⊙ Gate
- ◆ Internet Access
- ⊙ Water Source
- ⊙ Restricted Water Source
- Completed Burnout
- ⊗ Planned Dozer Line
- Fence
- Other
- Temporary Flight Restriction
- Fire Edge
- Wildfire Daily Fire Perimeter
- Transmission Lines
- Administrative Forest

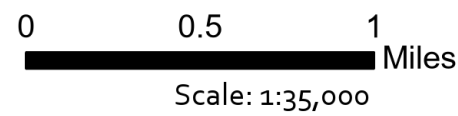
1	2	3
4	5	6
7	8	9
10	11	12

**Page 4**



**Backbone**  
**Incident IAP**  
**AZ-COF000642**  
**Day Operational Period 6/22/2021**

GIS Acres 34,180  
 6/21/2021 13:15  
 Acres Firewatch (geo)



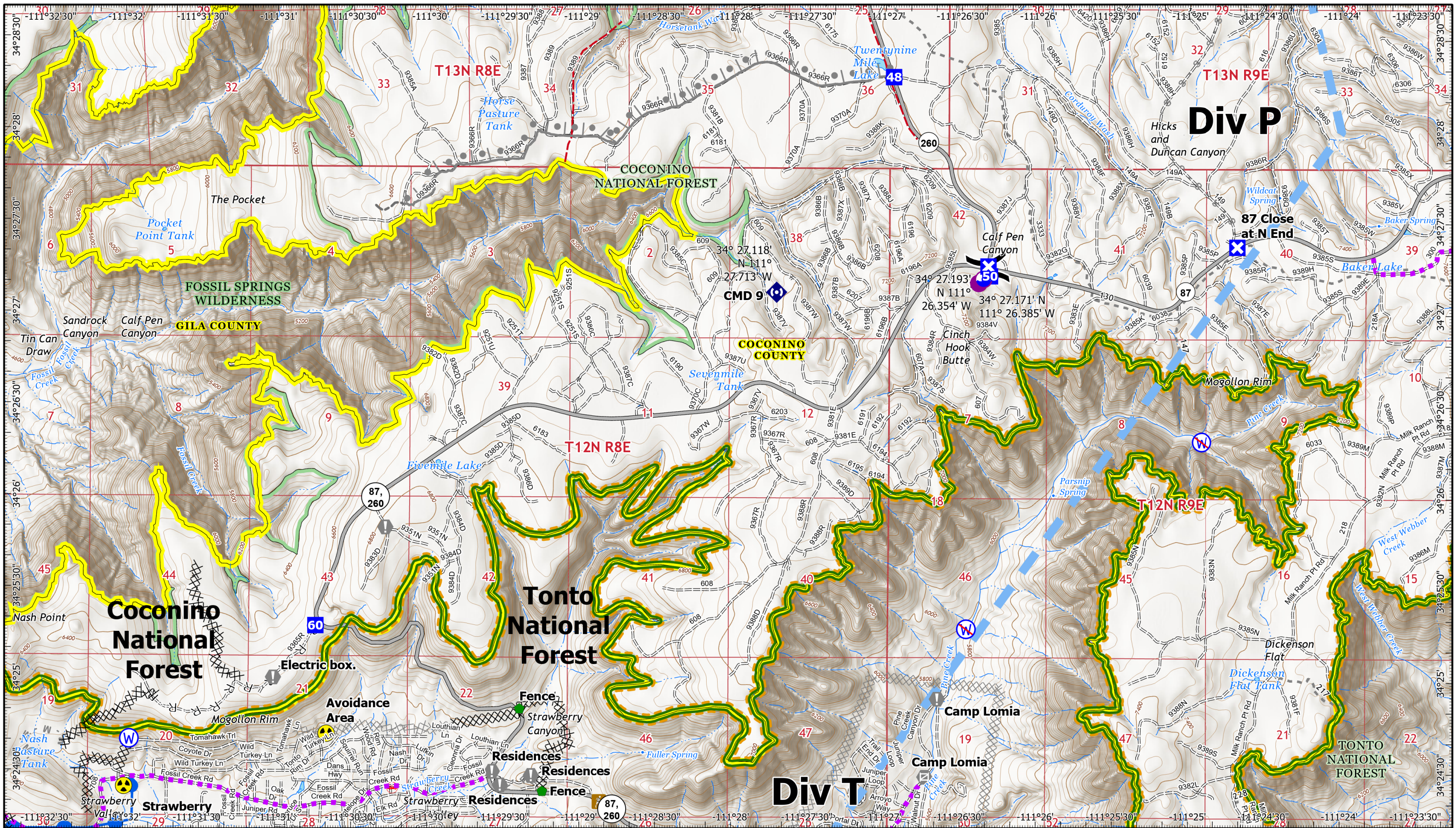
Map Created 6/21/2021 7:48 PM by rdrcrawford



- Drop Point
- ⊠ Closure
- ⊠ Lookout
- Value at Risk
- ⊠ Gate
- ◆ Internet Access
- ⊠ Restricted Water Source
- ⊠ Completed Burnout
- ⊠ Completed Dozer Line
- ⊠ Planned Mixed Construction Line
- ⊠ Planned Road as Line
- ⊠ Escape Route
- Route
- Wildfire Daily Fire Perimeter
- Transmission Lines
- Administrative Forest

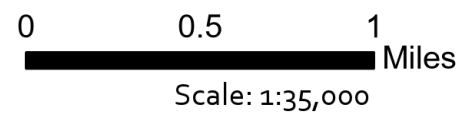
1	2	3
4	5	6
7	8	9
10	11	12





**Backbone**  
**Incident IAP**  
**AZ-COF000642**  
**Day Operational Period 6/22/2021**

GIS Acres 34,180  
 6/21/2021 13:15  
 Acres Firewatch (geo)

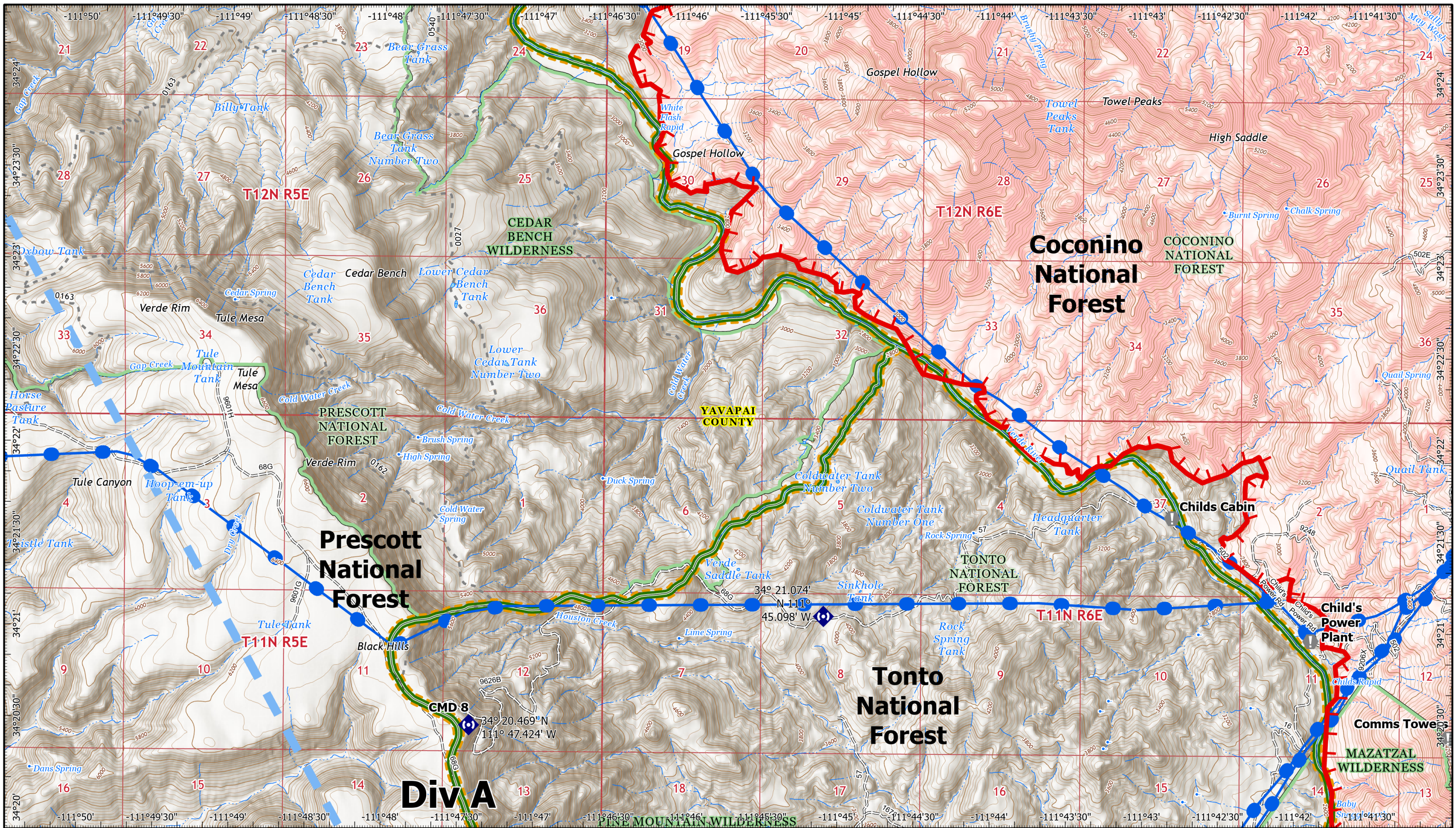


Map Created 6/21/2021 7:49 PM by rdrcrawford

- Dip Site
- Repair Point
- ✕ Planned Burnout
- ✕ Planned Dozer Line
- Helispot
- ◆ Repeater
- M Planned Mixed Construction Line
- Division Break
- Hazard
- R Planned Road as Line
- Drop Point
- Water Source
- S Planned Secondary Line
- Closure
- Restricted Water Source
- Fence
- Value at Risk
- ✕ Completed Dozer Line
- Other
- Gate
- R Completed Road as Line
- Route
- Temporary Flight Restriction
- Transmission Lines
- Administrative Forest

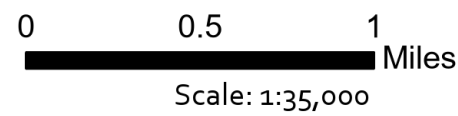
1	2	3
4	5	6
7	8	9
10	11	12





**Backbone**  
**Incident IAP**  
**AZ-COF000642**  
**Day Operational Period 6/22/2021**

GIS Acres 34,180  
 6/21/2021 13:15  
 Acres Firewatch (geo)



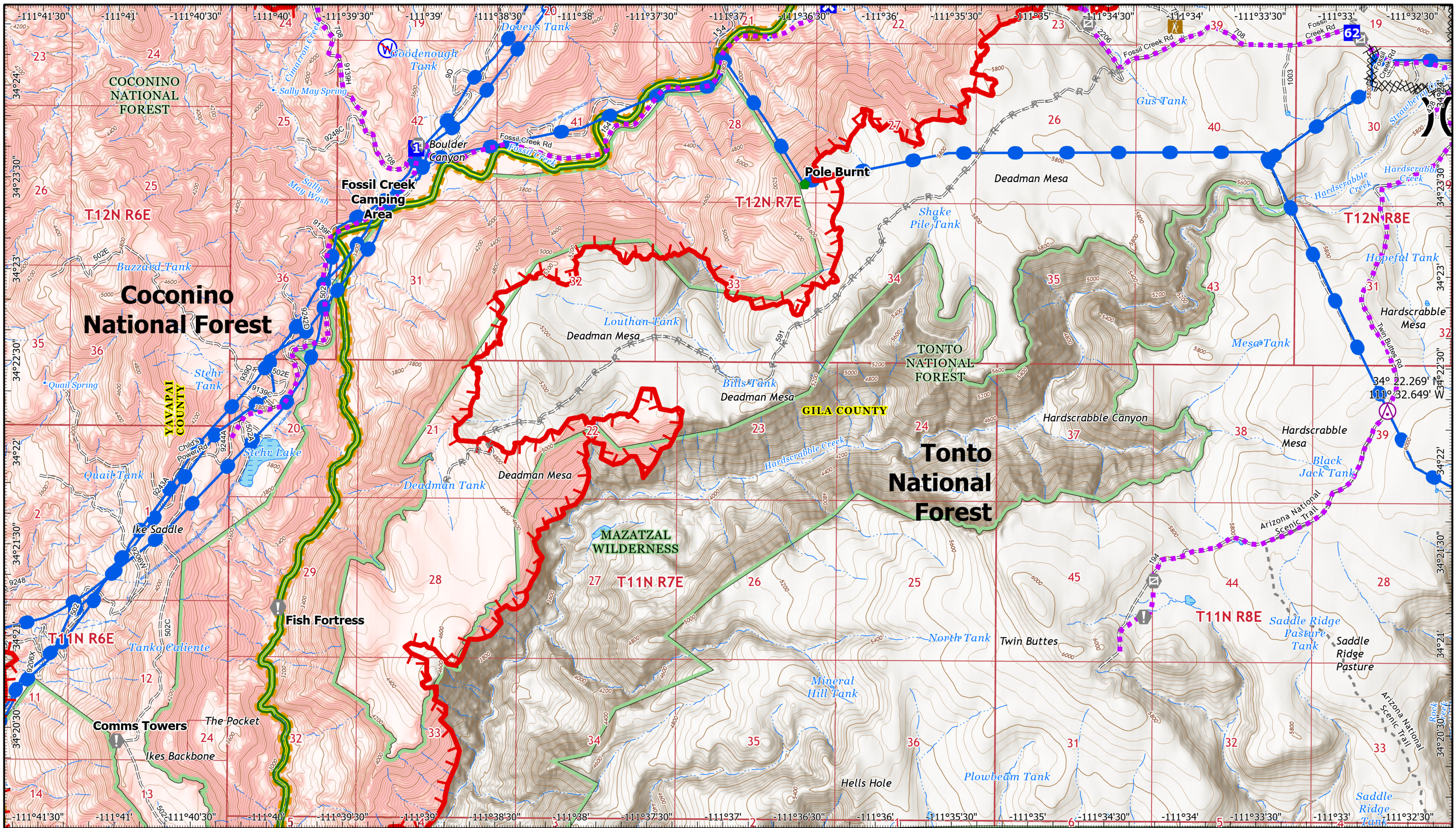
Map Created 6/21/2021 7:49 PM by rdrcrawford



- Value at Risk
- ◆ Repeater
- Temporary Flight Restriction
- Fire Edge
- Wildfire Daily Fire Perimeter
- Transmission Lines
- Administrative Forest

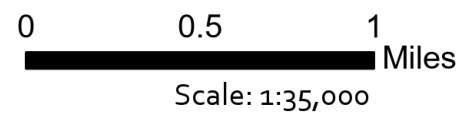
1	2	3
4	5	6
7	8	9
10	11	12





**Backbone**  
**Incident IAP**  
**AZ-COF000642**  
**Day Operational Period 6/22/2021**

GIS Acres 34,180  
 6/21/2021 13:15  
 Acres Firewatch (geo)



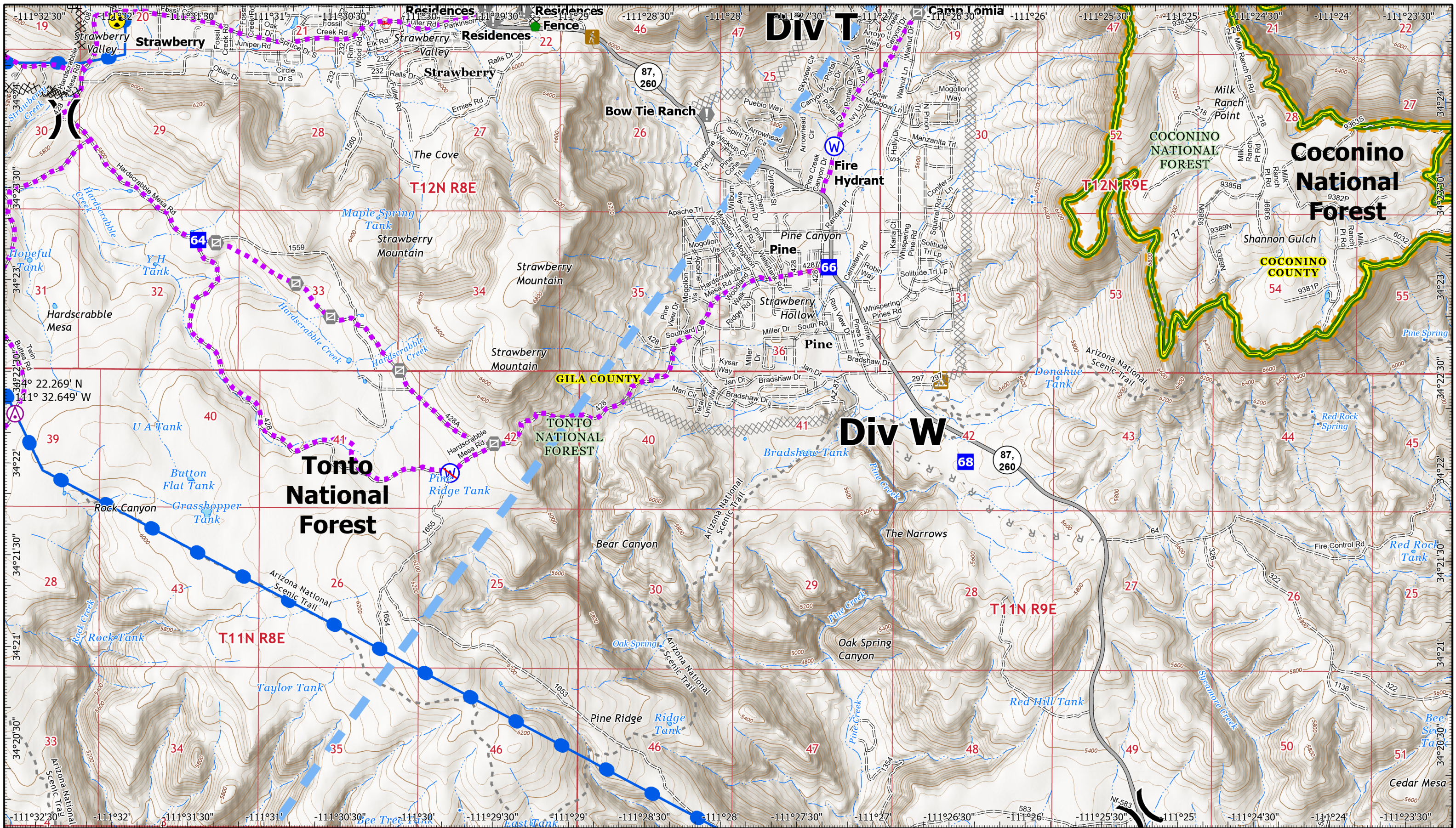
Map Created 6/21/2021 7:49 PM by rdrcrawford

- Aerial Hazard
- Division Break
- Drop Point
- Closure
- Value at Risk
- Gate
- Repair Point
- Restricted Water Source
- Completed Dozer Line
- Planned Mixed Construction Line
- Planned Road as Line
- Route
- Fire Edge
- Wildfire Daily Fire Perimeter
- Transmission Lines
- Administrative Forest

1	2	3
4	5	6
7	8	9
10	11	12

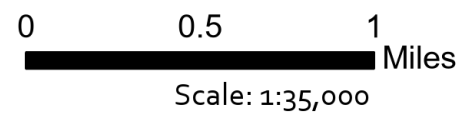






**Backbone**  
**Incident IAP**  
**AZ-COF000642**  
**Day Operational Period 6/22/2021**

GIS Acres 34,180  
 6/21/2021 13:15  
 Acres Firewatch (geo)

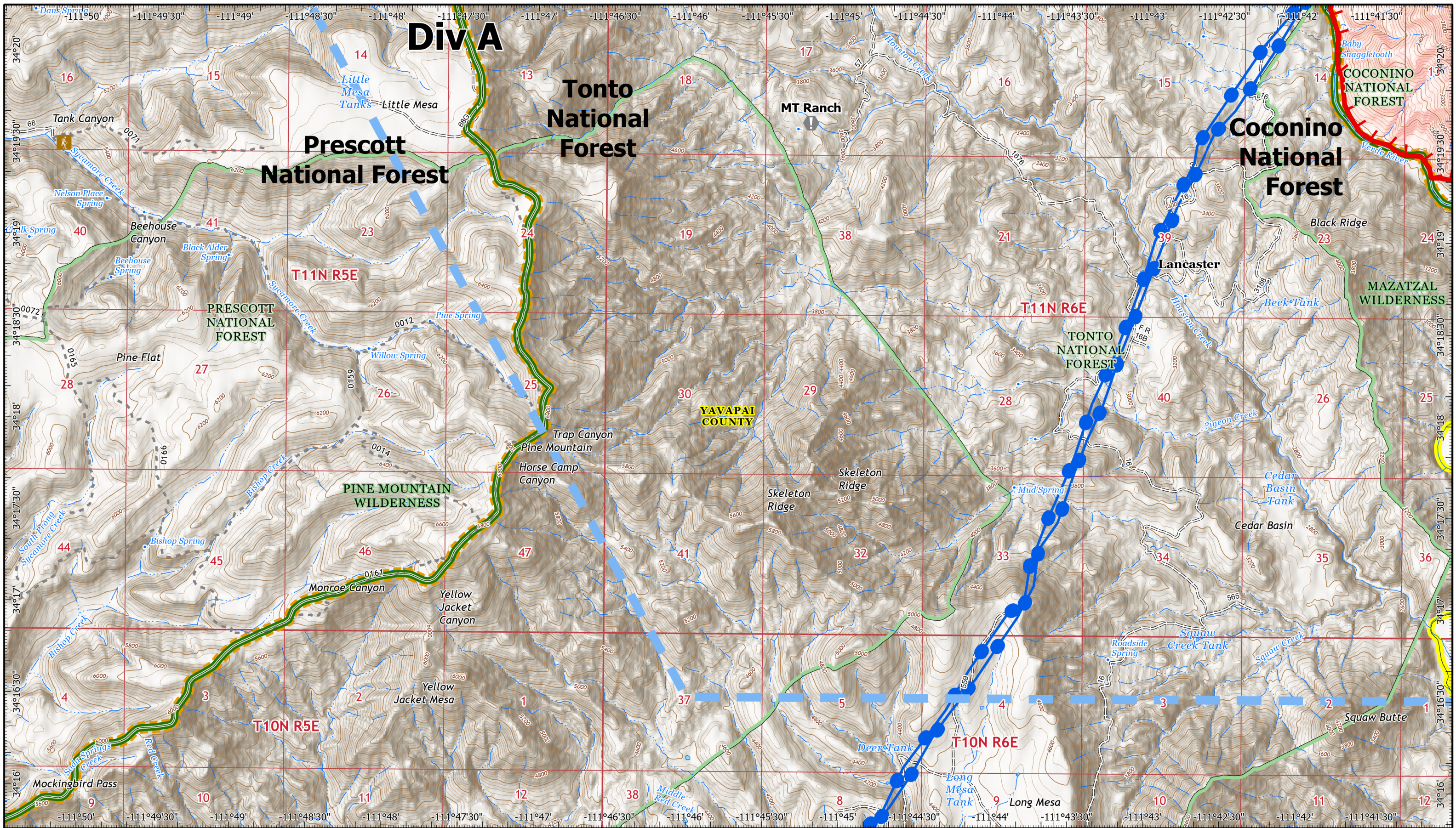


Map Created 6/21/2021 7:49 PM by rdrcrawford

- Aerial Hazard
- Division Break
- Drop Point
- Value at Risk
- Gate
- Repair Point
- Hazard
- Water Source
- Restricted Water Source
- Completed Dozer Line
- Completed Road as Line
- Planned Dozer Line
- Planned Mixed Construction Line
- Planned Road as Line
- Fence
- Route
- Temporary Flight Restriction
- Transmission Lines
- Administrative Forest

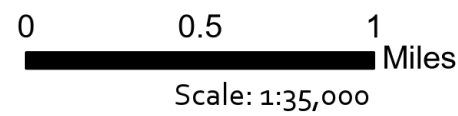
1	2	3
4	5	6
7	8	9
10	11	12





**Backbone**  
**Incident IAP**  
**AZ-COF000642**  
**Day Operational Period 6/22/2021**

GIS Acres 34,180  
 6/21/2021 13:15  
 Acres Firewatch (geo)

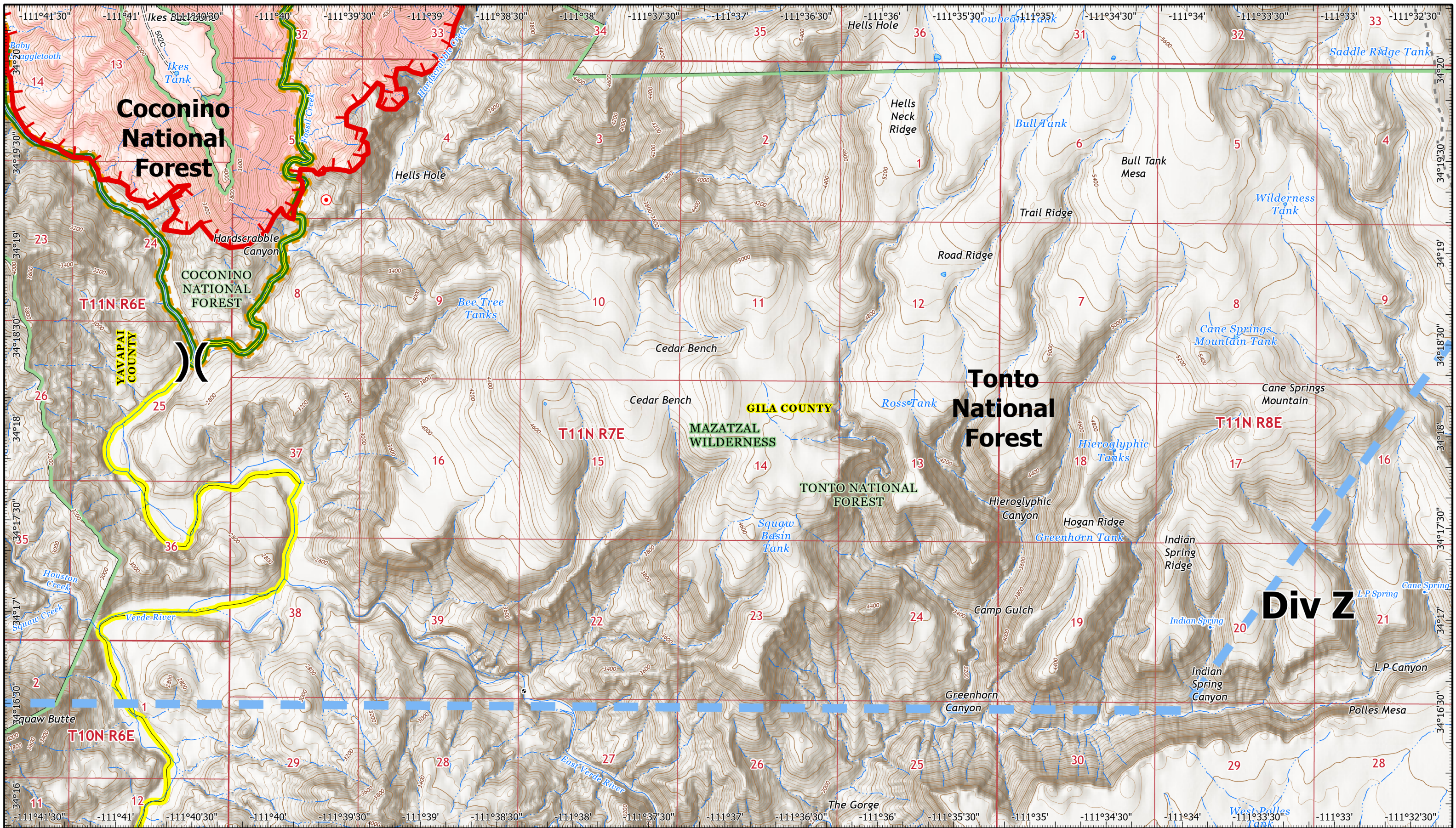


Map Created 6/21/2021 7:49 PM by rdrcrawford

- Value at Risk
- Temporary Flight Restriction
- Fire Edge
- Wildfire Daily Fire Perimeter
- Transmission Lines
- Administrative Forest

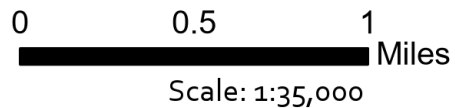
1	2	3
4	5	6
7	8	9
10	11	12





Backbone  
 Incident IAP  
 AZ-COF000642  
 Day Operational Period 6/22/2021

GIS Acres 34,180  
 6/21/2021 13:15  
 Acres Firewatch (geo)



Map Created 6/21/2021 7:49 PM by rdrcrawford



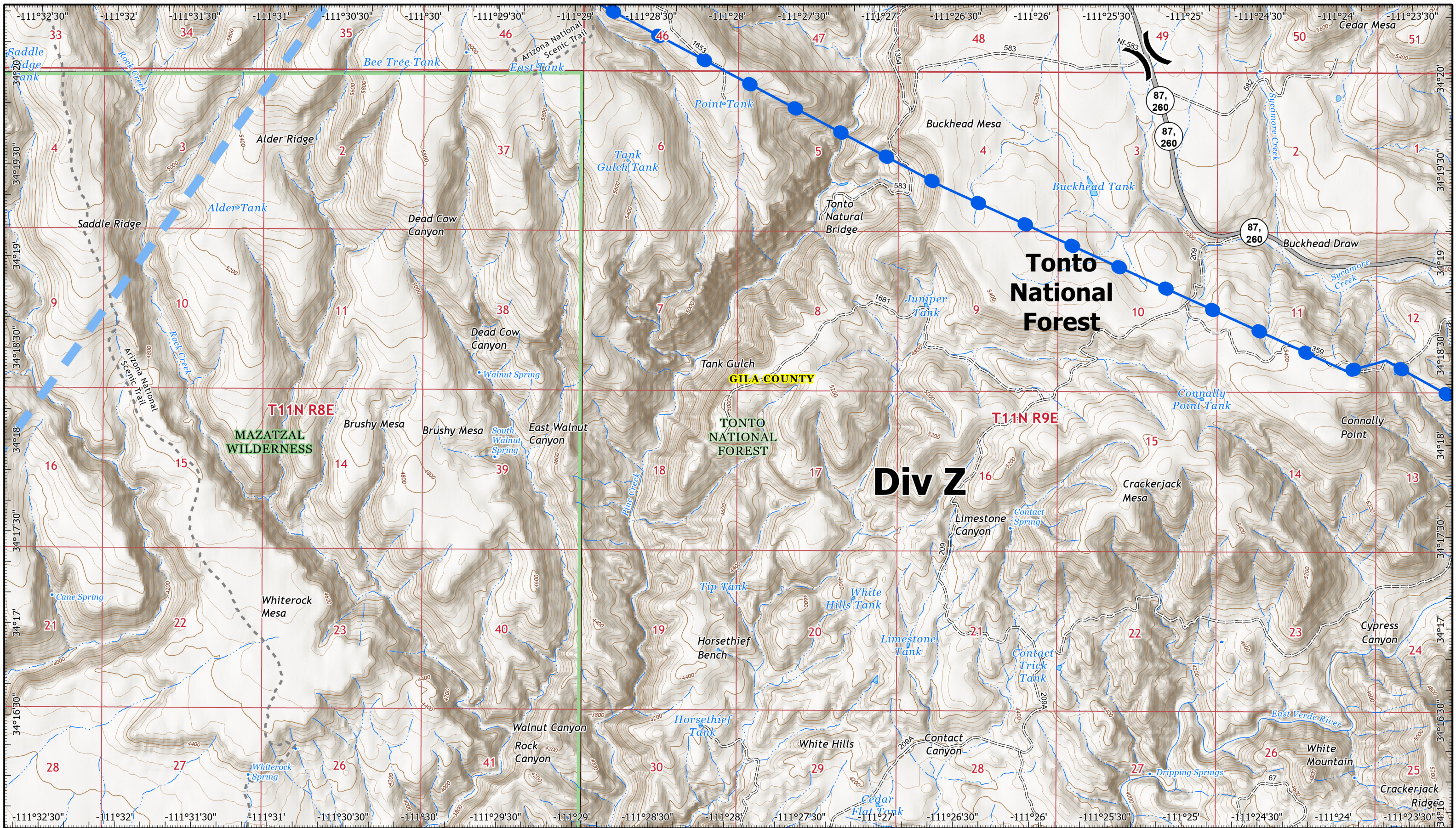
- x Division Break
- o Hot Spot - Spot Fire
- Value at Risk
- Temporary Flight Restriction

- ▬ Fire Edge
- ▬ Wildfire Daily Fire Perimeter
- ▬ Administrative Forest

1	2	3
4	5	6
7	8	9
10	11	12

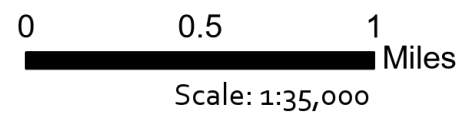
Page 11





**Backbone**  
**Incident IAP**  
**AZ-COF000642**  
**Day Operational Period 6/22/2021**

GIS Acres 34,180  
 6/21/2021 13:15  
 Acres Firewatch (geo)



Map Created 6/21/2021 7:49 PM by rdrcrawford

- Division Break
- Temporary Flight Restriction
- Wildfire Daily Fire Perimeter

- Transmission Lines
- Administrative Forest

1	2	3
4	5	6
7	8	9
10	11	12

**Page 12**

