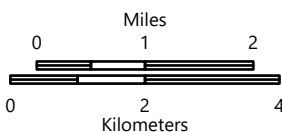


PILOT

Bottom
AZ-SCA-001674
7/4/2021

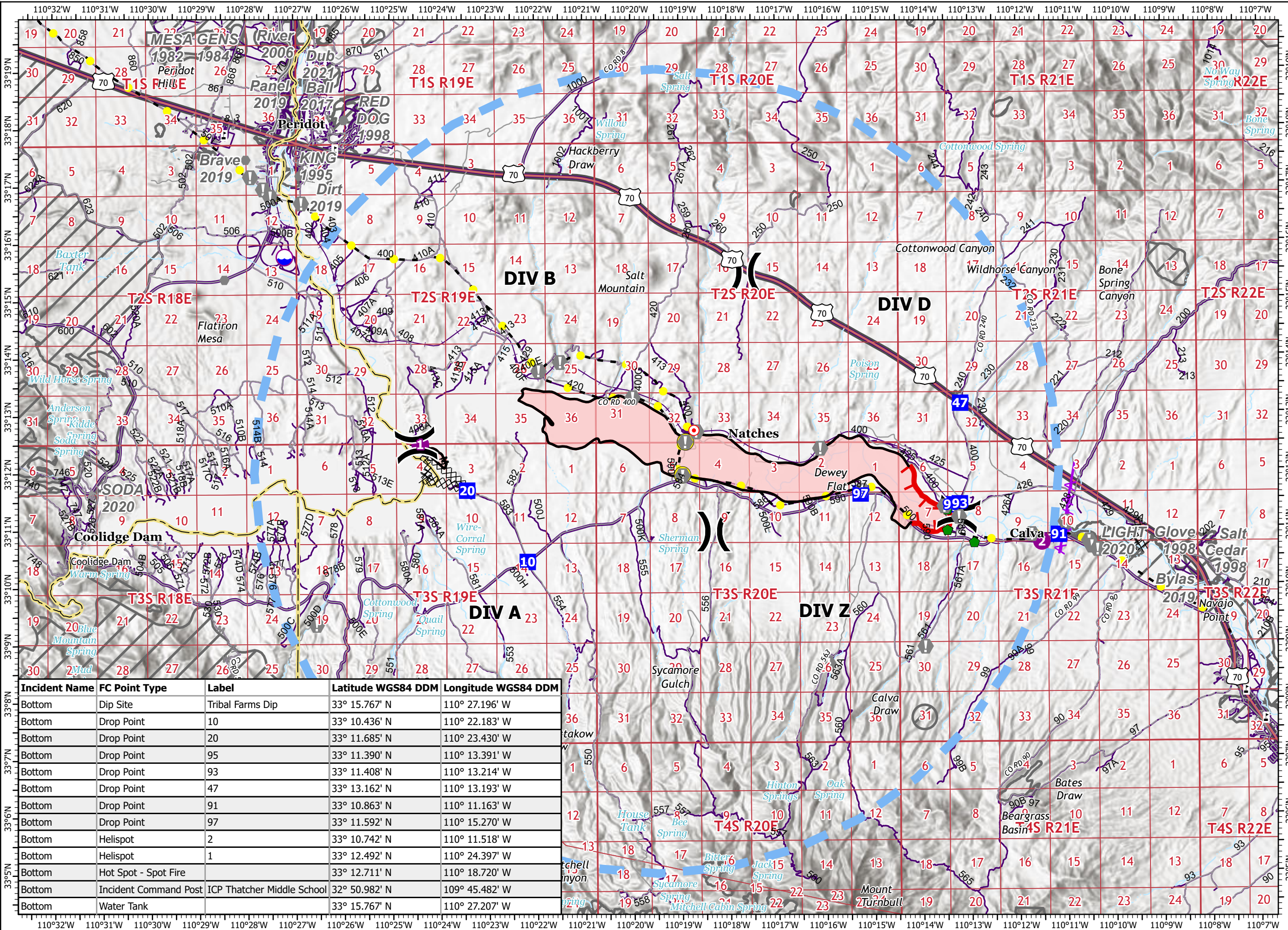
4,655 acres at 07/02/2021 12:00

- Label Point
- Dip Site
- Helispot
- Division Break
- Drop Point
- Hot Spot - Spot Fire
- Value at Risk
- Other
- Repair Point
- Hazard
- Completed Dozer Line
- Completed Mixed Construction Line
- Planned Dozer Line
- Planned Mixed Construction Line
- Highlighted Feature
- Aerial Hazard
- Temporary Flight Restriction
- Fire Edge
- Contained Line
- Wildfire Daily Fire Perimeter
- Highway
- Main Road
- Other Road
- San Carlos Fire History
- Railroads



1:112,405 - SWIMT 4 - 7/3/2021 2028

North American 1983 Datum. Lat/Long Grid



Incident Name	FC Point Type	Label	Latitude WGS84 DDM	Longitude WGS84 DDM
Bottom	Dip Site	Tribal Farms Dip	33° 15.767' N	110° 27.196' W
Bottom	Drop Point	10	33° 10.436' N	110° 22.183' W
Bottom	Drop Point	20	33° 11.685' N	110° 23.430' W
Bottom	Drop Point	95	33° 11.390' N	110° 13.391' W
Bottom	Drop Point	93	33° 11.408' N	110° 13.214' W
Bottom	Drop Point	47	33° 13.162' N	110° 13.193' W
Bottom	Drop Point	91	33° 10.863' N	110° 11.163' W
Bottom	Drop Point	97	33° 11.592' N	110° 15.270' W
Bottom	Helispot	2	33° 10.742' N	110° 11.518' W
Bottom	Helispot	1	33° 12.492' N	110° 24.397' W
Bottom	Hot Spot - Spot Fire		33° 12.711' N	110° 18.720' W
Bottom	Incident Command Post	ICP Thatcher Middle School	32° 50.982' N	109° 45.482' W
Bottom	Water Tank		33° 15.767' N	110° 27.207' W