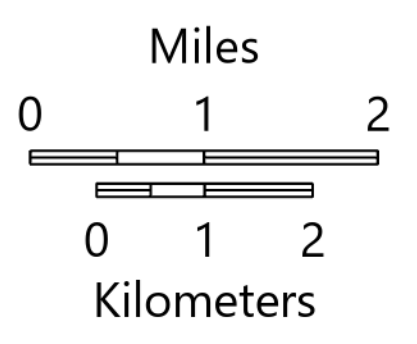
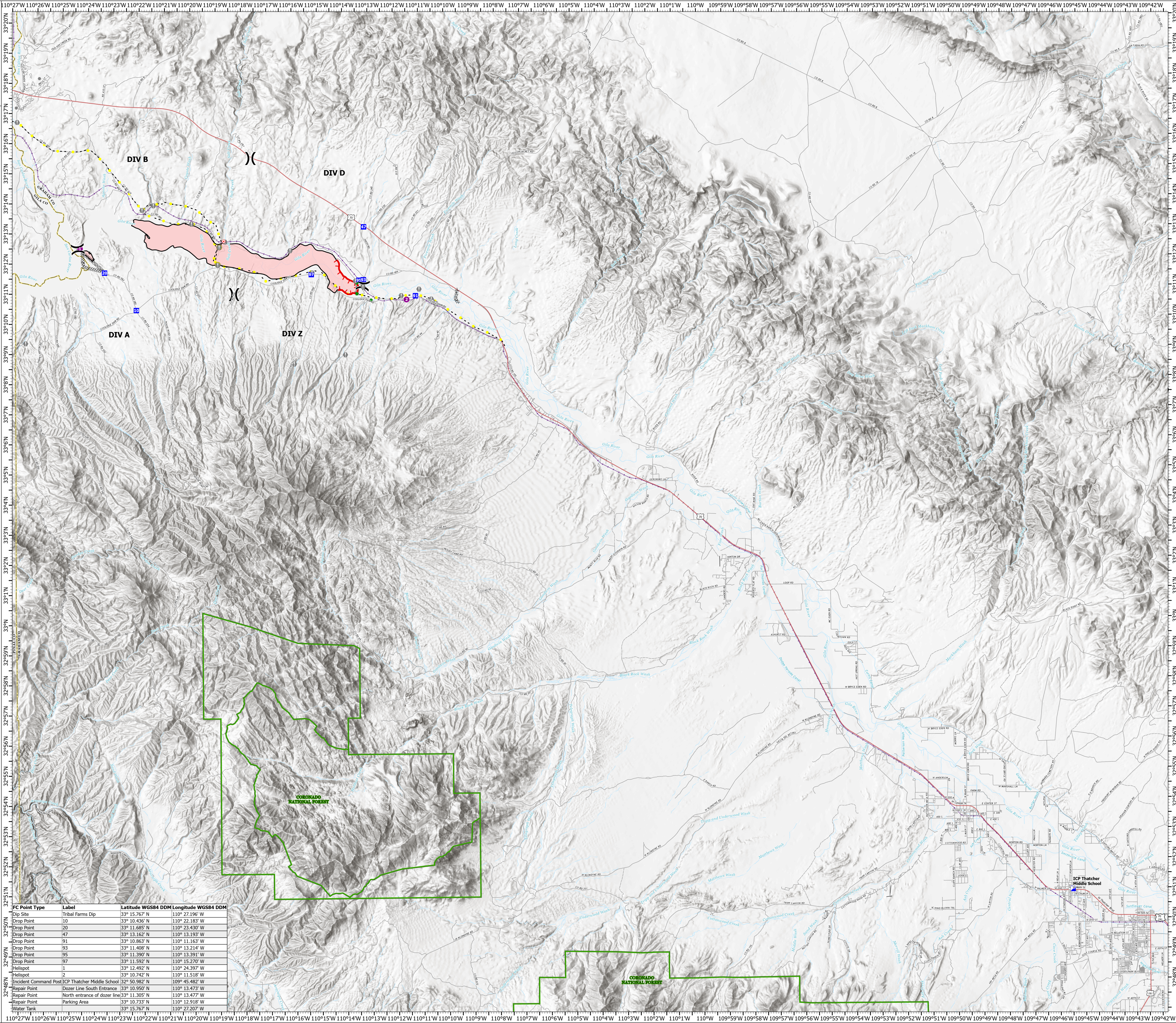


# TRANSPORTATION

Bottom  
AZ-SCA-001674  
7/4/2021

4,655 acres at Acres from GPS Flight

- Dip Site
- Helispot
- Division Break
- Incident
- Command Post
- Drop Point
- Hot Spot - Spot Fire
- Fire
- Value at Risk
- Other
- Repair Point
- Hazard
- Completed Dozer Line
- Completed Mixed Construction Line
- Planned Dozer Line
- Planned Mixed Construction Line
- Highlighted Feature
- Fire Edge
- Contained Line
- Wildfire Daily Fire
- Perimeter
- Railroads



IC Point Type	Label	Latitude WGS84 DDM	Longitude WGS84 DDM
Dip Site	Tribal Farms Dip	33° 15.767' N	110° 27.196' W
Drop Point	10	33° 10.436' N	110° 22.183' W
Drop Point	20	33° 11.685' N	110° 23.430' W
Drop Point	47	33° 13.162' N	110° 13.193' W
Drop Point	91	33° 10.863' N	110° 11.163' W
Drop Point	93	33° 11.408' N	110° 13.214' W
Drop Point	95	33° 11.390' N	110° 13.391' W
Drop Point	97	33° 11.592' N	110° 15.270' W
Helispot	1	33° 12.492' N	110° 24.397' W
Helispot	2	33° 10.742' N	110° 11.518' W
Incident Command Post	ICP Thatcher Middle School	32° 50.982' N	109° 45.482' W
Repair Point	Dozer Line South Entrance	33° 10.950' N	110° 13.473' W
Repair Point	North entrance of dozer line	33° 11.305' N	110° 13.477' W
Repair Point	Parking Area	33° 10.733' N	110° 12.918' W
Water Tank		33° 15.767' N	110° 27.207' W