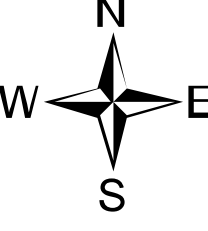
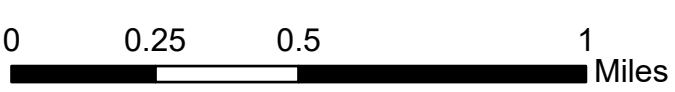


104°52'W 104°51.5'W 104°51.01'W 104°50.5'W 104°50'W 104°49.5'W 104°49'W 104°48.5'W 104°48'W 104°47.5'W

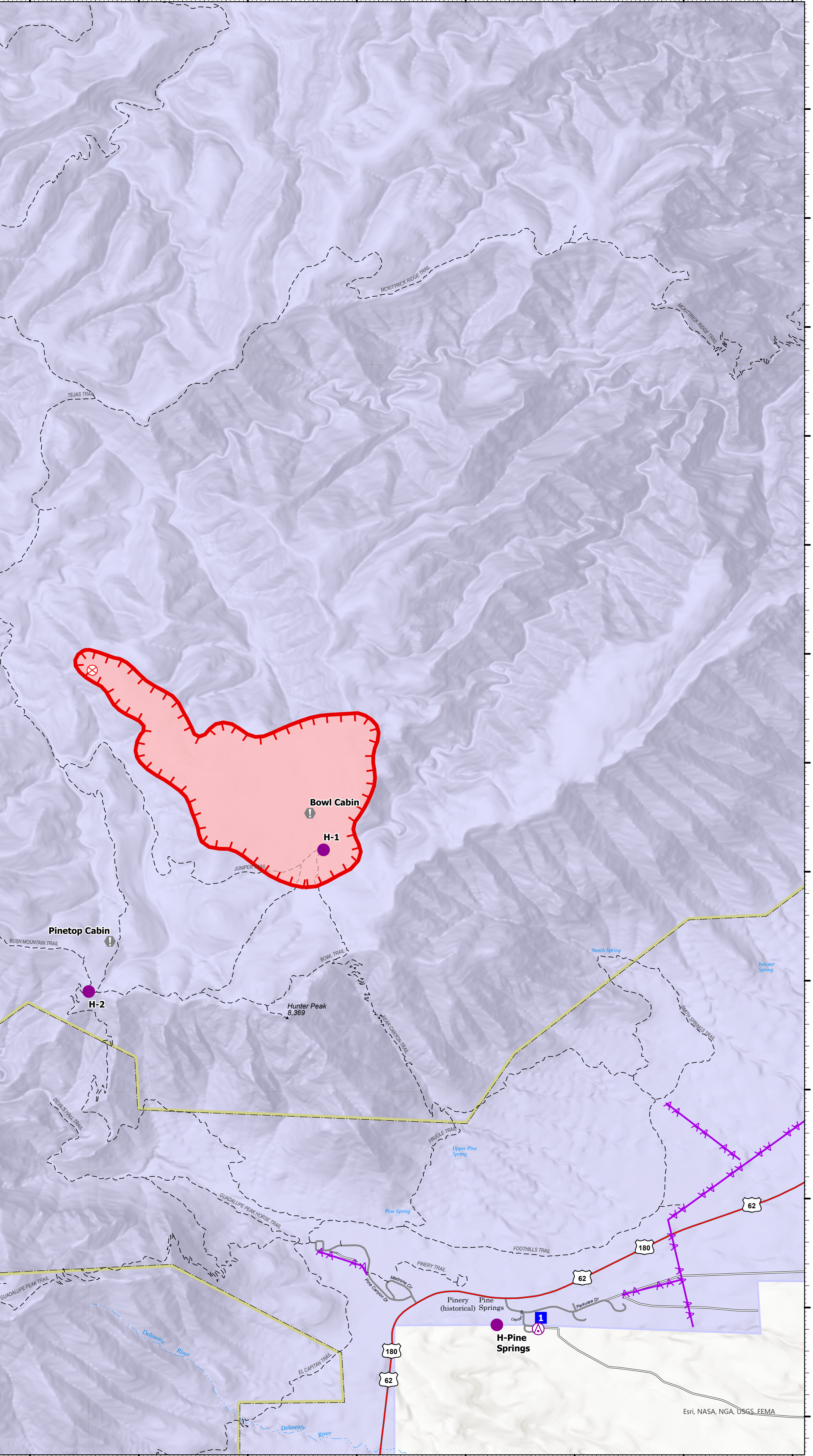
Briefing

Dog
TXGUP-159
05/21/2021

05/21/2021 Day
472 acres at 20210520



- Aerial Hazard
- Fire Origin
- Helispot
- Value at Risk
- Drop Point
- Wildfire Daily Fire Perimeter



31°59'N
31°58.5'N
31°58'N
31°57.5'N
31°57'N
31°56.5'N
31°56'N
31°55.5'N
31°55'N
31°54.5'N
31°53.99'N
31°53.5'N
31°53'N

31°59'N
31°58.5'N
31°58'N
31°57.5'N
31°57'N
31°56.5'N
31°56'N
31°55.5'N
31°55'N
31°54.5'N
31°53.99'N
31°53.5'N
31°53'N

M Lowrey
5/20/2021 1736
Acres from IR and GPS
WGS 1984 Datum. Lat/Long Grid

Esri, NASA, NGA, USGS, FEMA

104°52'W 104°51.5'W 104°51.01'W 104°50.5'W 104°50'W 104°49.5'W 104°49'W 104°48.5'W 104°48'W 104°47.5'W