

104°54.5'W 104°54'W 104°53.5'W 104°53'W 104°52.5'W 104°52'W 104°51.5'W 104°51.01'W 104°50.5'W 104°50'W 104°49.5'W 104°49'W 104°48.5'W 104°48'W 104°47.5'W 104°47'W 104°46.5'W 104°46'W 104°45.5'W 104°45'W 104°44.5'W

31°59.5'N 31°59'N 31°58.5'N 31°58'N 31°57.5'N 31°57'N 31°56.5'N 31°56'N 31°55.5'N 31°55'N 31°54.5'N 31°53.99'N 31°53.5'N 31°53'N 31°52.5'N

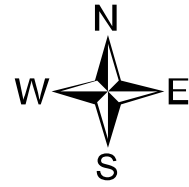
31°59.5'N 31°59'N 31°58.5'N 31°58'N 31°57.5'N 31°57'N 31°56.5'N 31°56'N 31°55.5'N 31°55'N 31°54.5'N 31°53.99'N 31°53.5'N 31°53'N 31°52.5'N

Briefing

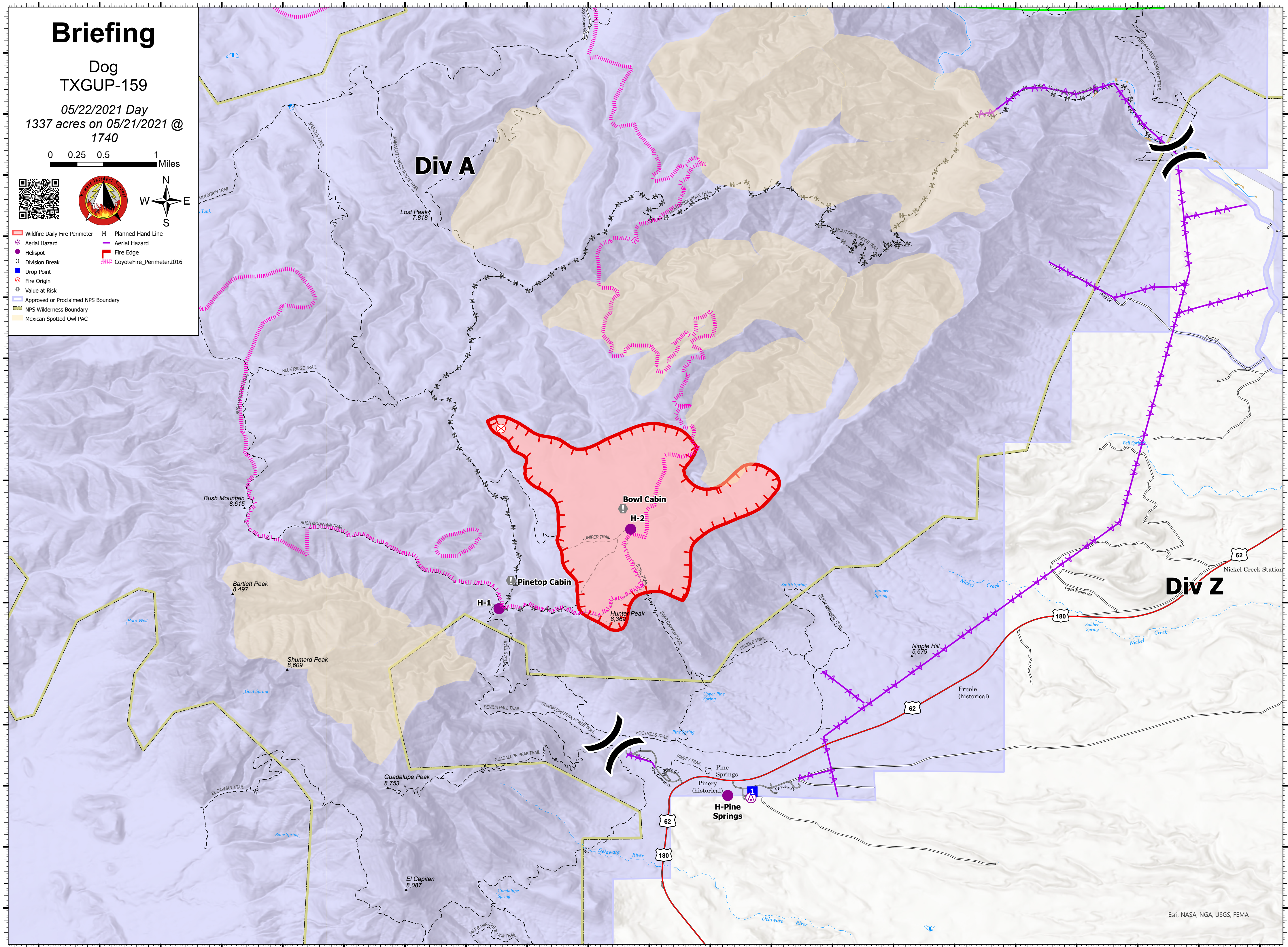
Dog TXGUP-159

05/22/2021 Day
1337 acres on 05/21/2021 @
1740

0 0.25 0.5 1 Miles



- ▬ Wildfire Daily Fire Perimeter
- ⊗ Aerial Hazard
- Helispot
- X Division Break
- Drop Point
- ⊗ Fire Origin
- ⬇ Value at Risk
- Approved or Proclaimed NPS Boundary
- NPS Wilderness Boundary
- Mexican Spotted Owl PAC
- Planned Hand Line
- Aerial Hazard
- Fire Edge
- CoyoteFire_Perimeter2016



Div Z

Div A

Bowl Cabin

Pinetop Cabin

H-Pine Springs

Bush Mountain 8,615

Bartlett Peak 8,497

Shumard Peak 8,609

Guadalupe Peak 8,753

El Capitan 8,087

Hunter Peak 8,369

Lost Peak 7,818

Nipple Hill 5,879