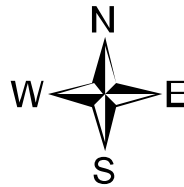
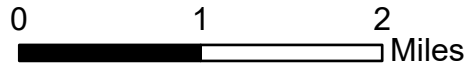


Air Operations

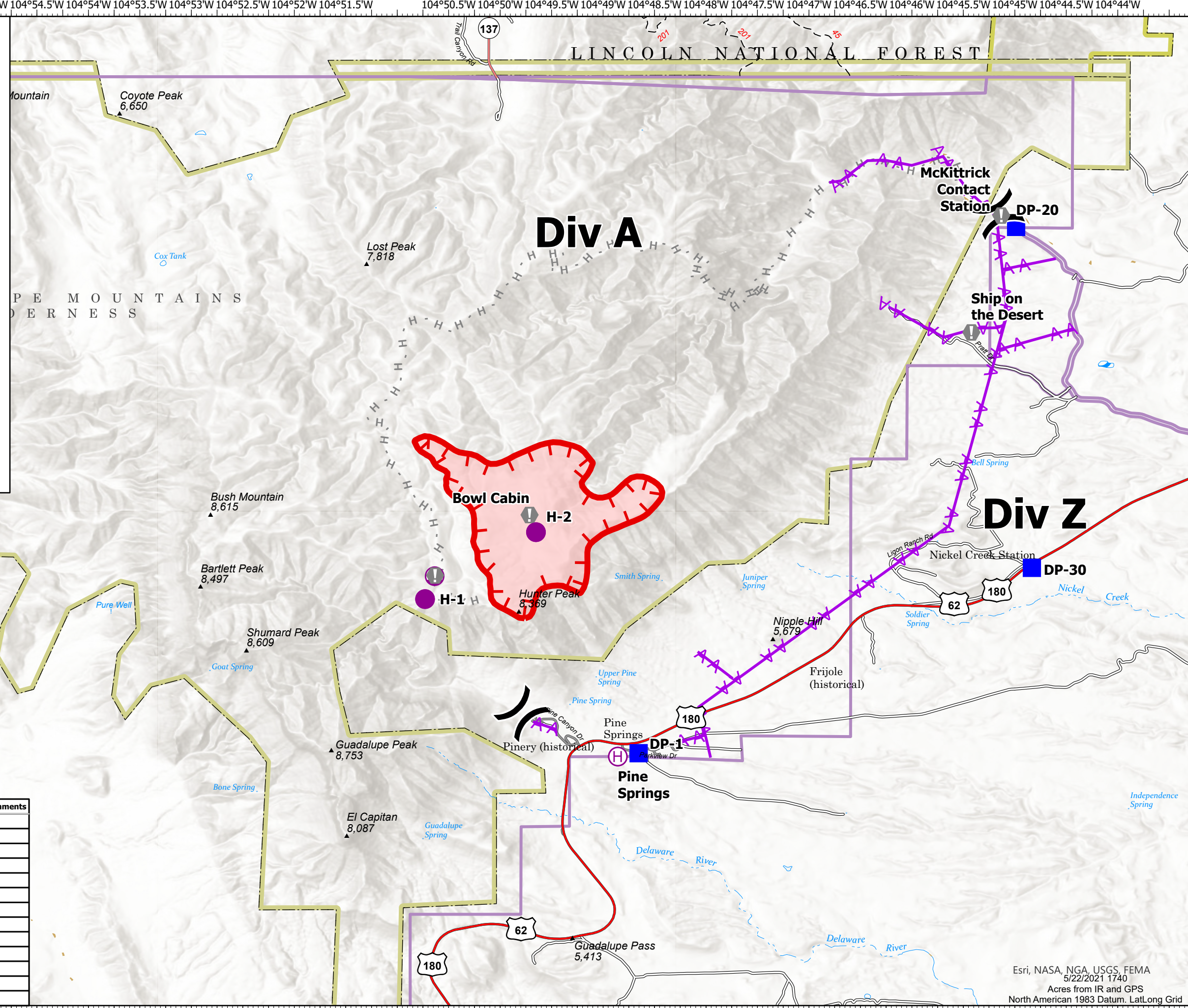
Dog
TXGUP-159
05/23/21

05/23/21 Day
1337 acres at 05/21/2021 @ 1740



- Helispot
- H Helibase
- ⊗ Sling Site
- ⌘ Division Break
- Drop Point
- V Value at Risk
- H Planned Hand Line
- A- Aerial Hazard
- Fire Edge
- Wildfire Daily Fire Perimeter
- Helispot
- H Helibase

FC Point Type	Label	Latitude WGS84 DDM	Longitude WGS84 DDM	Comments
Value at Risk	Pinetop Cabin	31° 55.181' N	104° 50.633' W	
Helispot	H-1	31° 54.950' N	104° 50.730' W	
Helispot	H-2	31° 55.600' N	104° 49.653' W	
Helibase	Pine Springs	31° 53.420' N	104° 48.857' W	
Drop Point	DP-1	31° 53.453' N	104° 48.655' W	
Value at Risk	Bowl Cabin	31° 55.769' N	104° 49.715' W	
Division Break	Z/A Break (South)	31° 53.838' N	104° 49.787' W	
Division Break	A/Z Break (North)	31° 58.692' N	104° 45.171' W	
Sling Site	At Pinetop Cabin	31° 55.173' N	104° 50.637' W	
Drop Point	DP-20	31° 58.566' N	104° 44.988' W	
Value at Risk	McKittrick Contact Station	31° 58.678' N	104° 45.132' W	
Value at Risk	Ship on the Desert	31° 57.543' N	104° 45.422' W	
Drop Point	DP-30	31° 55.254' N	104° 44.834' W	



Esri, NASA, NGA, USGS, FEMA
5/22/2021 1740
Acres from IR and GPS
North American 1983 Datum, LatLong Grid