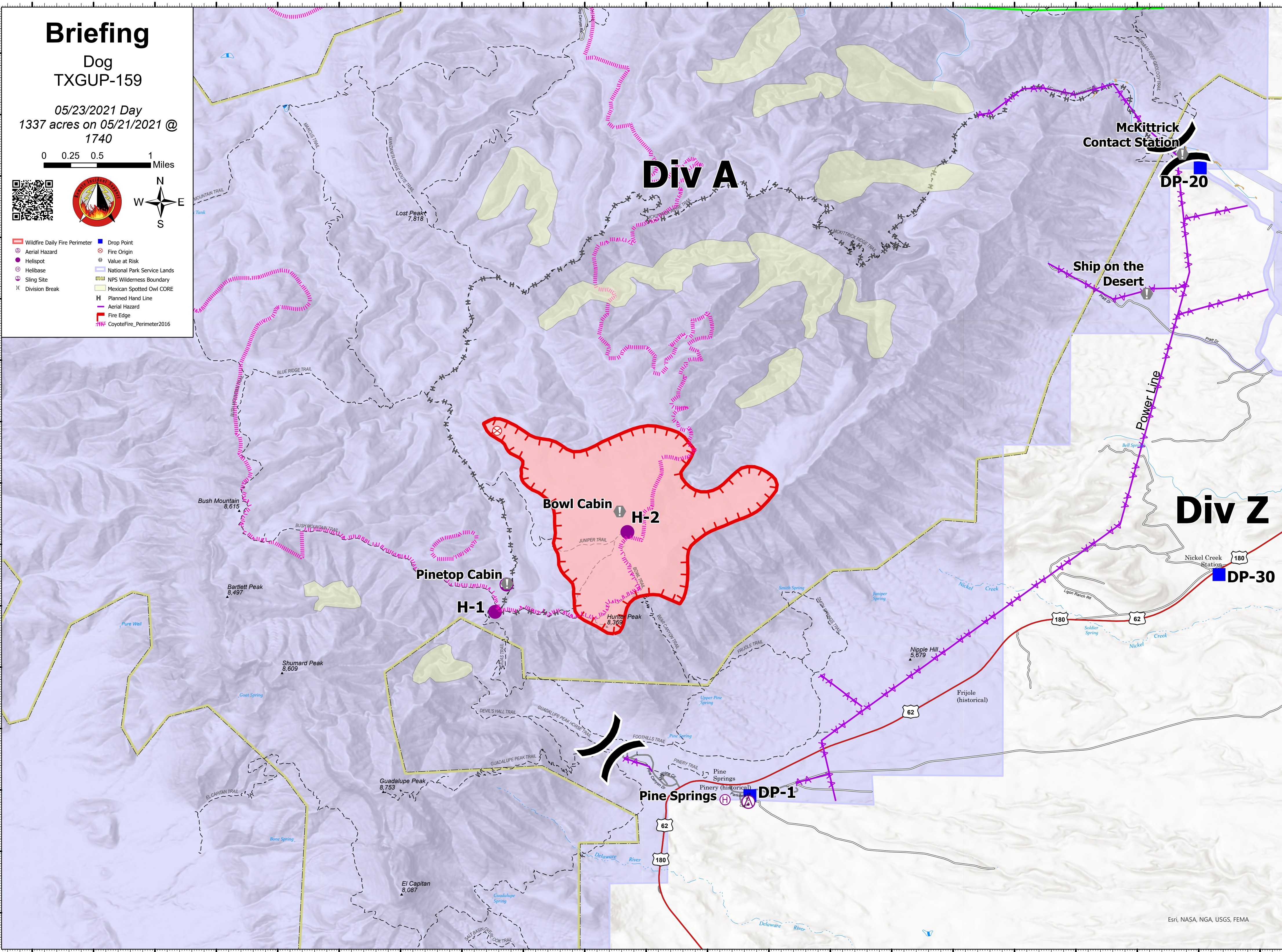


104°54.5'W 104°54'W 104°53.5'W 104°53'W 104°52.5'W 104°52'W 104°51.5'W 104°51.01'W 104°50.5'W 104°50'W 104°49.5'W 104°49'W 104°48.5'W 104°48'W 104°47.5'W 104°47'W 104°46.5'W 104°46'W 104°45.5'W 104°45'W 104°44.5'W

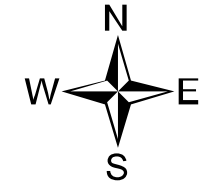


Briefing

Dog
TXGUP-159

05/23/2021 Day
1337 acres on 05/21/2021 @
1740

0 0.25 0.5 1 Miles



- ▬ Wildfire Daily Fire Perimeter
- Drop Point
- ⊗ Aerial Hazard
- ⊙ Fire Origin
- Helispot
- ⊙ Value at Risk
- ⊙ Helibase
- ⊙ National Park Service Lands
- ⊙ NPS Wilderness Boundary
- ⊙ Mexican Spotted Owl CORE
- ⊙ Sling Site
- ⊙ Planned Hand Line
- ⊙ Aerial Hazard
- ⊙ Fire Edge
- ⊙ CoyoteFire_Perimeter2016
- ⊙ Division Break