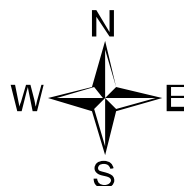
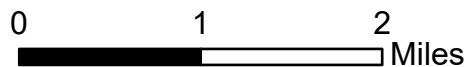


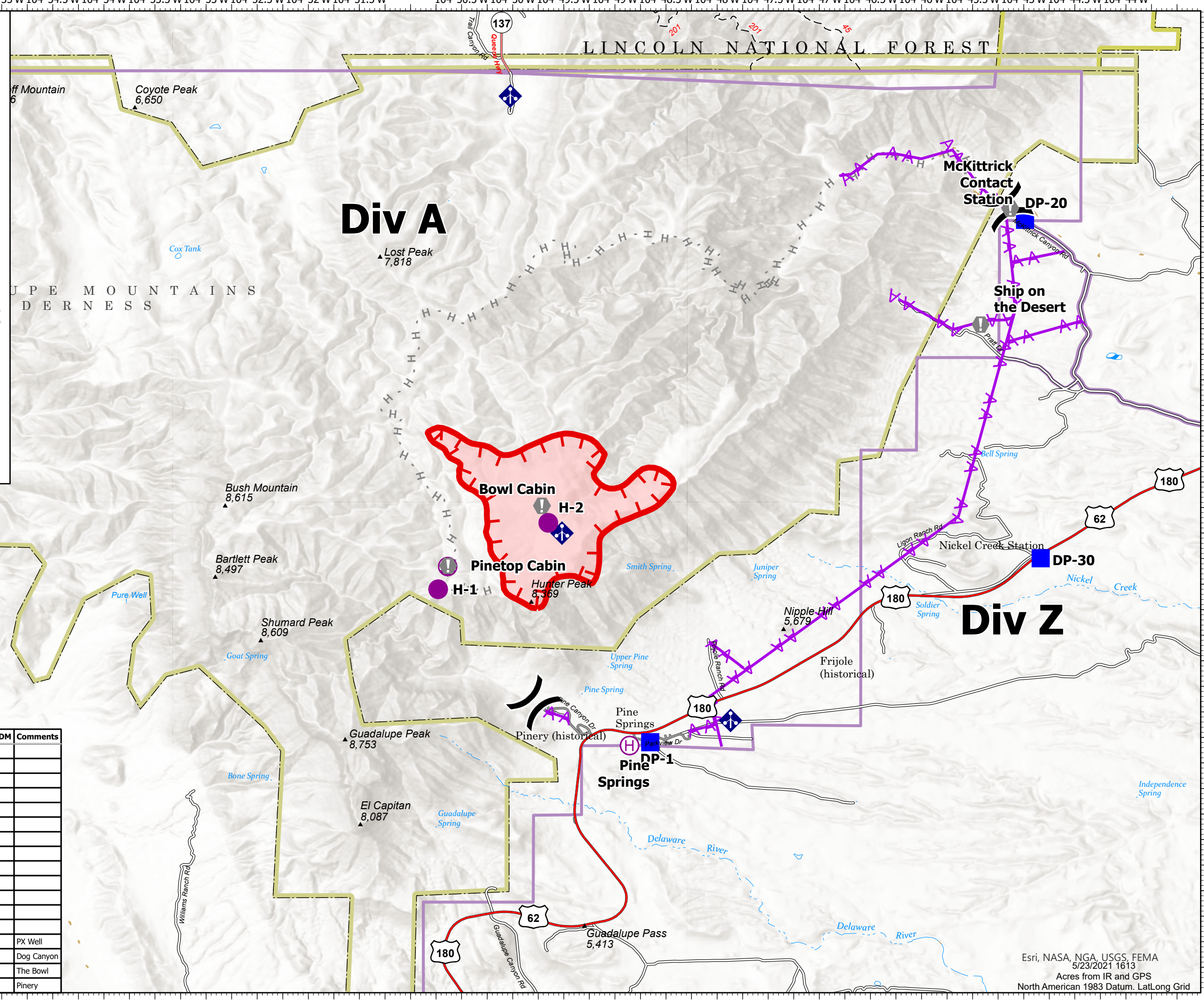
# Air Operations

Dog  
TXGUP-159  
05/24/21

05/24/21 Day  
1337 acres at 05/21/2021 @ 1740



- Helispot
- Helibase
- ⊕ Sling Site
- ⌵ Division Break
- Drop Point
- Value at Risk
- ◆ Mobile Weather Unit
- H Planned Hand Line
- Aerial Hazard
- Fire Edge
- Wildfire Daily Fire Perimeter
- Helispot
- Helibase



FC Point Type	Label	Latitude WGS84 DDM	Longitude WGS84 DDM	Comments
Value at Risk	Pinetop Cabin	31° 55.181' N	104° 50.633' W	
Helispot	H-1	31° 54.950' N	104° 50.730' W	
Helispot	H-2	31° 55.600' N	104° 49.653' W	
Helibase	Pine Springs	31° 53.420' N	104° 48.857' W	
Drop Point	DP-1	31° 53.453' N	104° 48.655' W	
Value at Risk	Bowl Cabin	31° 55.769' N	104° 49.715' W	
Division Break	Z/A Break (South)	31° 53.838' N	104° 49.787' W	
Division Break	A/Z Break (North)	31° 58.692' N	104° 45.171' W	
Sling Site	At Pinetop Cabin	31° 55.173' N	104° 50.637' W	
Drop Point	DP-20	31° 58.566' N	104° 44.988' W	
Value at Risk	McKittrick Contact Station	31° 58.678' N	104° 45.132' W	
Value at Risk	Ship on the Desert	31° 57.543' N	104° 45.422' W	
Drop Point	DP-30	31° 55.254' N	104° 44.834' W	
Mobile Weather Unit		31° 58.351' N	104° 56.882' W	PX Well
Mobile Weather Unit		31° 59.778' N	104° 50.024' W	Dog Canyon
Mobile Weather Unit		31° 55.500' N	104° 49.518' W	The Bowl
Mobile Weather Unit		31° 53.666' N	104° 47.869' W	Pinery

Esri, NASA, NGA, USGS, FEMA  
5/23/2021 1613  
Acres from IR and GPS  
North American 1983 Datum. LatLong Grid