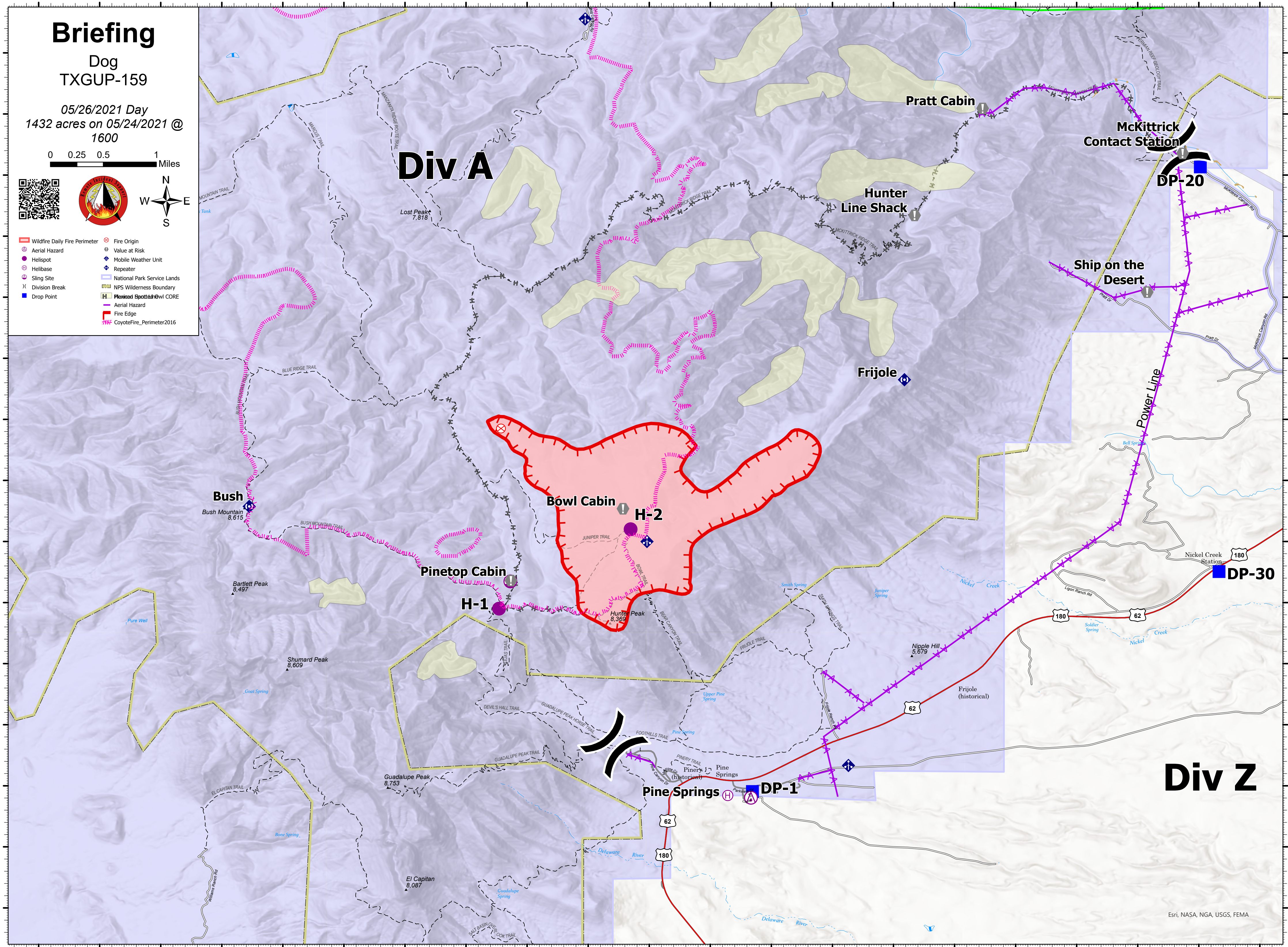


104°54.5'W 104°54'W 104°53.5'W 104°53'W 104°52.5'W 104°52'W 104°51.5'W 104°51.01'W 104°50.5'W 104°50'W 104°49.5'W 104°49'W 104°48.5'W 104°48'W 104°47.5'W 104°47'W 104°46.5'W 104°46'W 104°45.5'W 104°45'W 104°44.5'W



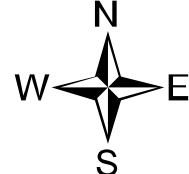
104°54.5'W 104°54'W 104°53.5'W 104°53'W 104°52.5'W 104°52'W 104°51.5'W 104°51.01'W 104°50.5'W 104°50'W 104°49.5'W 104°49'W 104°48.5'W 104°48'W 104°47.5'W 104°47'W 104°46.5'W 104°46'W 104°45.5'W 104°45'W 104°44.5'W

# Briefing

Dog  
TXGUP-159

05/26/2021 Day  
1432 acres on 05/24/2021 @  
1600

0 0.25 0.5 1 Miles



- ▬ Wildfire Daily Fire Perimeter
- ⊗ Fire Origin
- ⊙ Aerial Hazard
- ⊕ Helispot
- ⊘ Helibase
- ⊗ Sling Site
- ⊘ Division Break
- Drop Point
- ⊙ Value at Risk
- ◆ Mobile Weather Unit
- ◆ Repeater
- National Park Service Lands
- NPS Wilderness Boundary
- Mixed Spotted Owl CORE
- ⊕ Aerial Hazard
- ⊕ Fire Edge
- ⊕ CoyoteFire\_Perimeter2016

## Div A

## Div Z

31°59.5'N  
31°59'N  
31°58.5'N  
31°58'N  
31°57.5'N  
31°57'N  
31°56.5'N  
31°56'N  
31°55.5'N  
31°55'N  
31°54.5'N  
31°53.99'N  
31°53.5'N  
31°53'N  
31°52.5'N

31°59.5'N  
31°59'N  
31°58.5'N  
31°58'N  
31°57.5'N  
31°57'N  
31°56.5'N  
31°56'N  
31°55.5'N  
31°55'N  
31°54.5'N  
31°53.99'N  
31°53.5'N  
31°53'N  
31°52.5'N