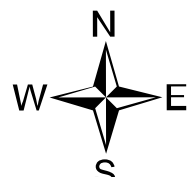


Near Term Fire Behavior

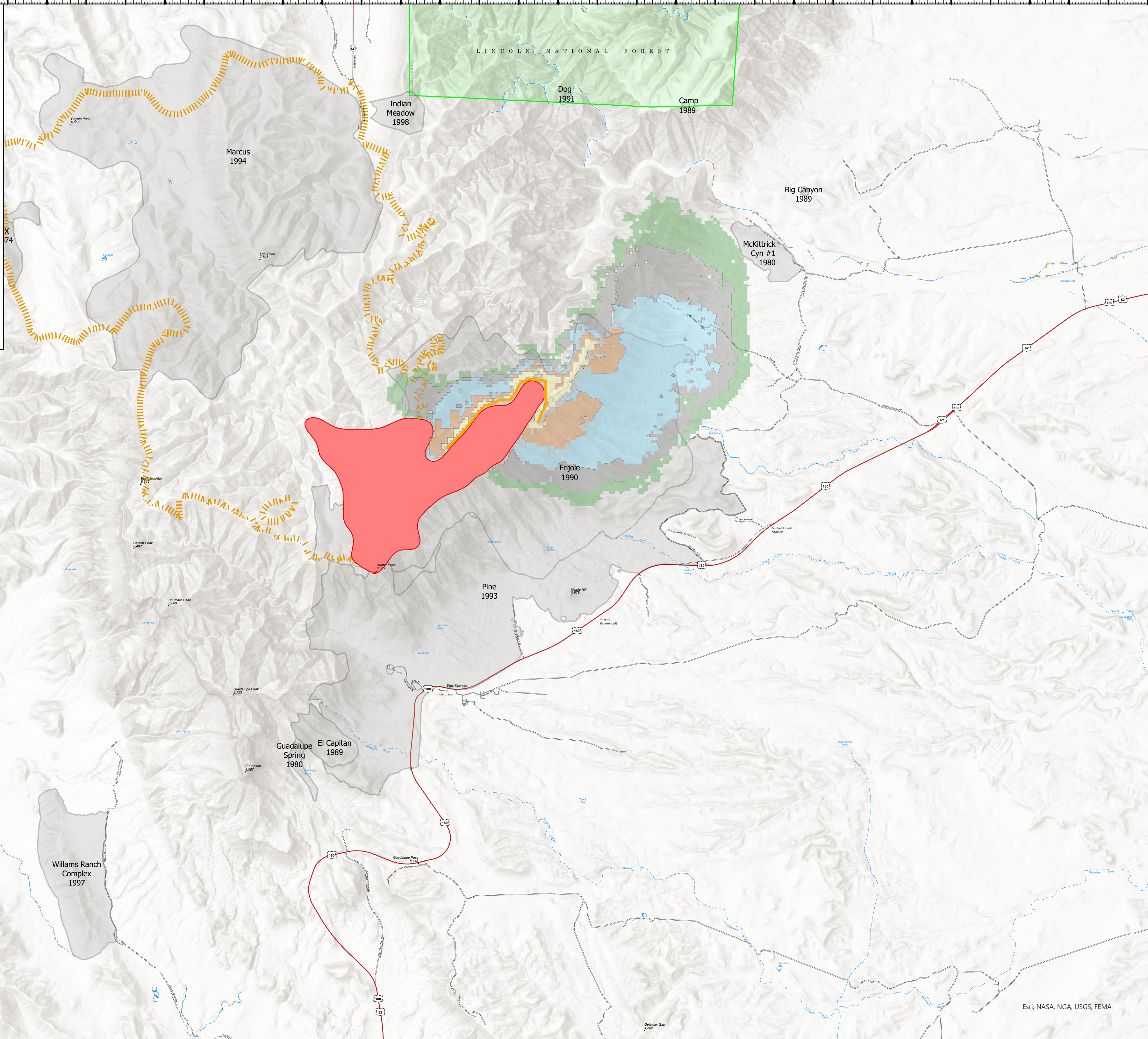
Dog

05/27/2021 Day
1754 acres on 05/26/2021 @ 1234



- Coyote Fire Perimeter 2016
- Wildfire Daily Fire Perimeter
- 05/26
- 05/27
- 05/28
- 05/29
- 05/30
- DOG_0526_Ignition

This NTFB shows the modeled daily fire spread over the next three days starting 05/26 using the forecasted weather from The Bowl RAWs. The fire perimeter is from a GPS flight on 05/26 at 11:00. The Ignition is drawn around the Northwest corner of the fire where heat was showing on 05/26. No barriers or suppression were modeled. The Fuel Models from Landfire 2020 fuels were used and the Grass/Shrub (GS2) on steep slopes (>40 degrees) was changed to non-burnable to show the rock. This model shows minimal fire spread today 05/26. It shows that if the fire becomes established to the south slope of Frijole Ridge that with the forecasted strong SW winds over the next two days the fire would have a long spread distance on Thursday and Friday. This is probably overpredicting but the south side of the ridge does have fuel on it and would be lined up and exposed to the SW wind. This model will be updated as a new perimeter and updated



05/21/2021
Acres from IR
NAD 83 UTM Zone 13N

Esri, NASA, NGA, USGS, FEMA