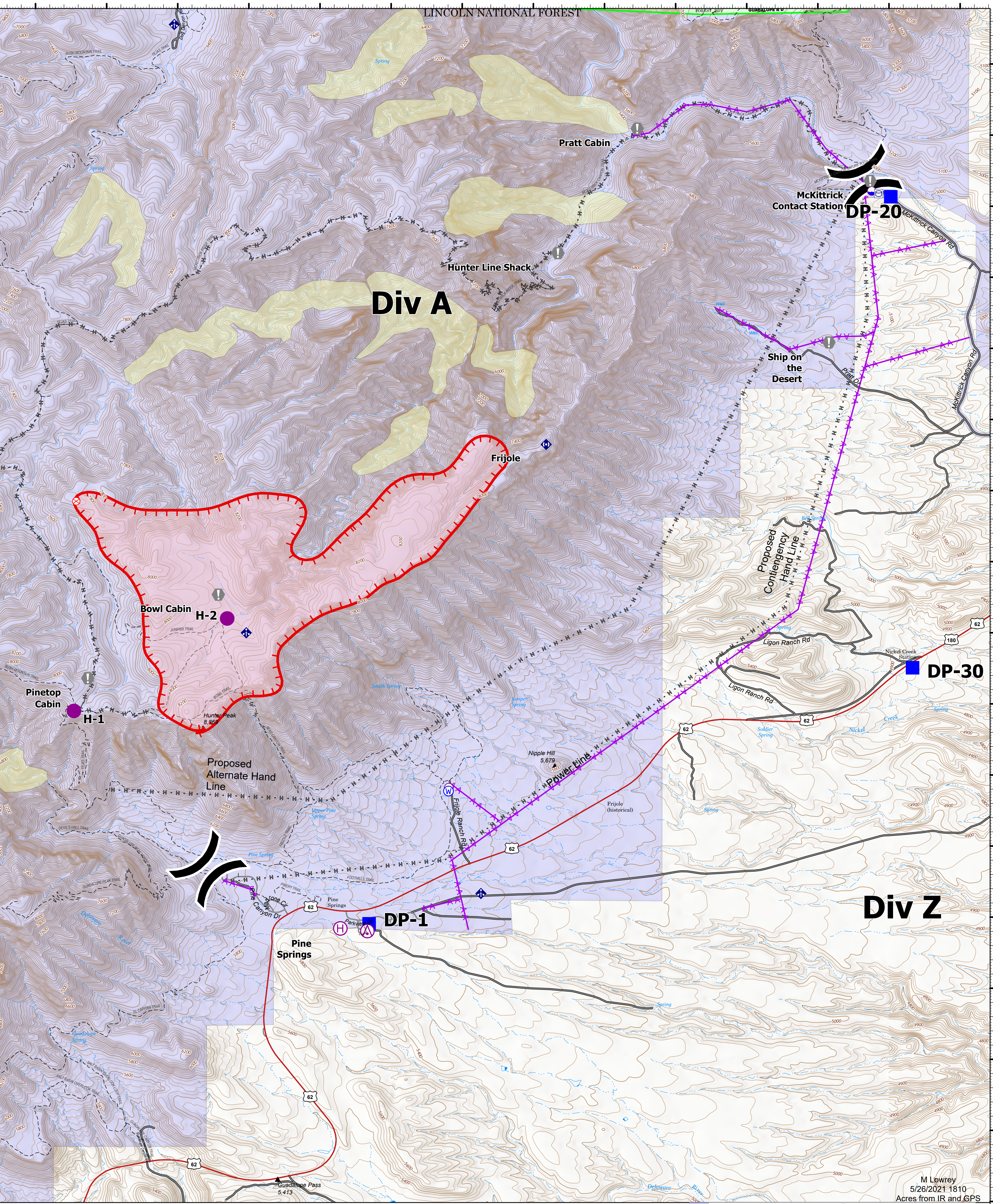


104°51.01'W 104°50.5'W 104°50'W 104°49.5'W 104°49'W 104°48.5'W 104°48'W 104°47.5'W 104°47'W 104°46.5'W 104°46'W 104°45.5'W 104°45'W 104°44.5'W

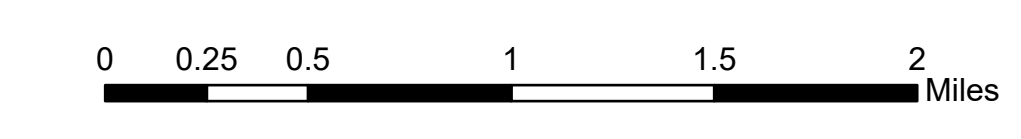
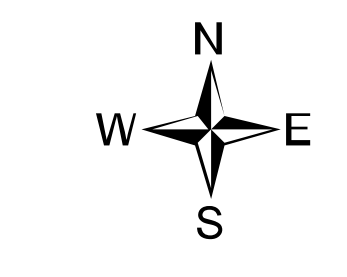


**Operations Dog TXGUP-159 05/27/21 Day**

**1754 Acres on 05/26/21 @ 1234**

M Lowrey 5/26/2021 1810 Acres from IR and GPS

	National Park Service Lands		Value at Risk
	Aerial Hazard		Mobile Weather Unit
	Dip Site		Repeater
	Helispot		Water Source
	Helibase		Planned Hand Line
	Sling Site		Aerial Hazard
	Division Break		Fire Edge
	Drop Point		Wildfire Daily Fire Perimeter
	Fire Origin		



104°51.01'W 104°50.5'W 104°50'W 104°49.5'W 104°49'W 104°48.5'W 104°48'W 104°47.5'W 104°47'W 104°46.5'W 104°46'W 104°45.5'W 104°45'W 104°44.5'W