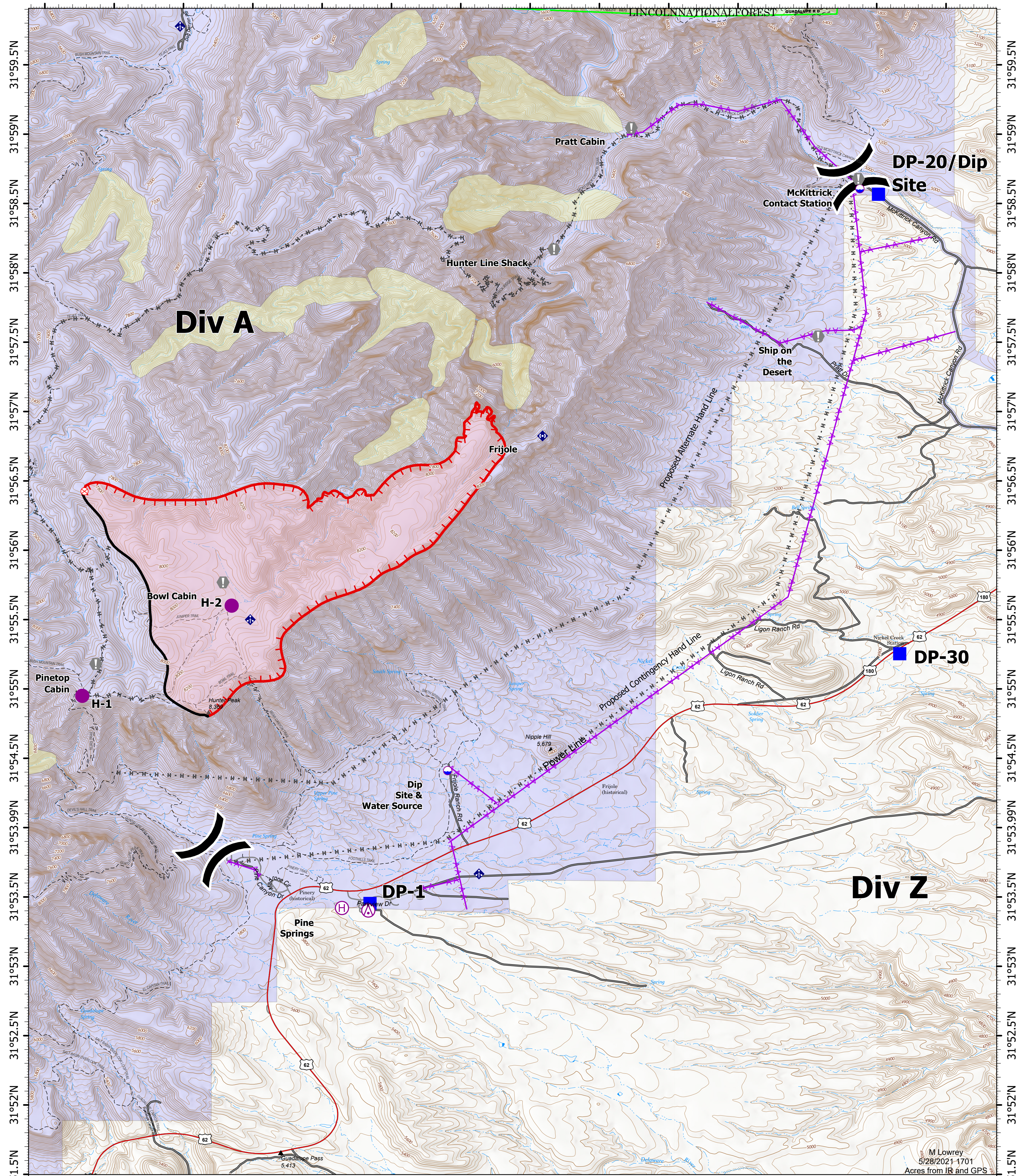


104°51.01'W 104°50.5'W 104°50'W 104°49.5'W 104°49'W 104°48.5'W 104°48'W 104°47.5'W 104°47'W 104°46.5'W 104°46'W 104°45.5'W 104°45'W 104°44.5'W



Operations Dog TXGUP-159

05/29/21 Day

1863 Acres on 05/27/21 @ 2207

| | |
|-----------------------------|-------------------------------|
| National Park Service Lands | Value at Risk |
| Aerial Hazard | Mobile Weather Unit |
| Dip Site | Repeater |
| Helispot | Planned Hand Line |
| Helibase | Aerial Hazard |
| Sling Site | Fire Edge |
| Division Break | Contained Line |
| Drop Point | Wildfire Daily Fire Perimeter |
| Fire Origin | Mexican Spotted Owl CORE |

104°51.01'W 104°50.5'W 104°50'W 104°49.5'W 104°49'W 104°48.5'W 104°48'W 104°47.5'W 104°47'W 104°46.5'W 104°46'W 104°45.5'W 104°45'W 104°44.5'W