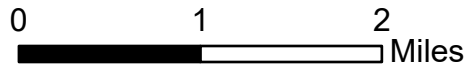


Air Operations

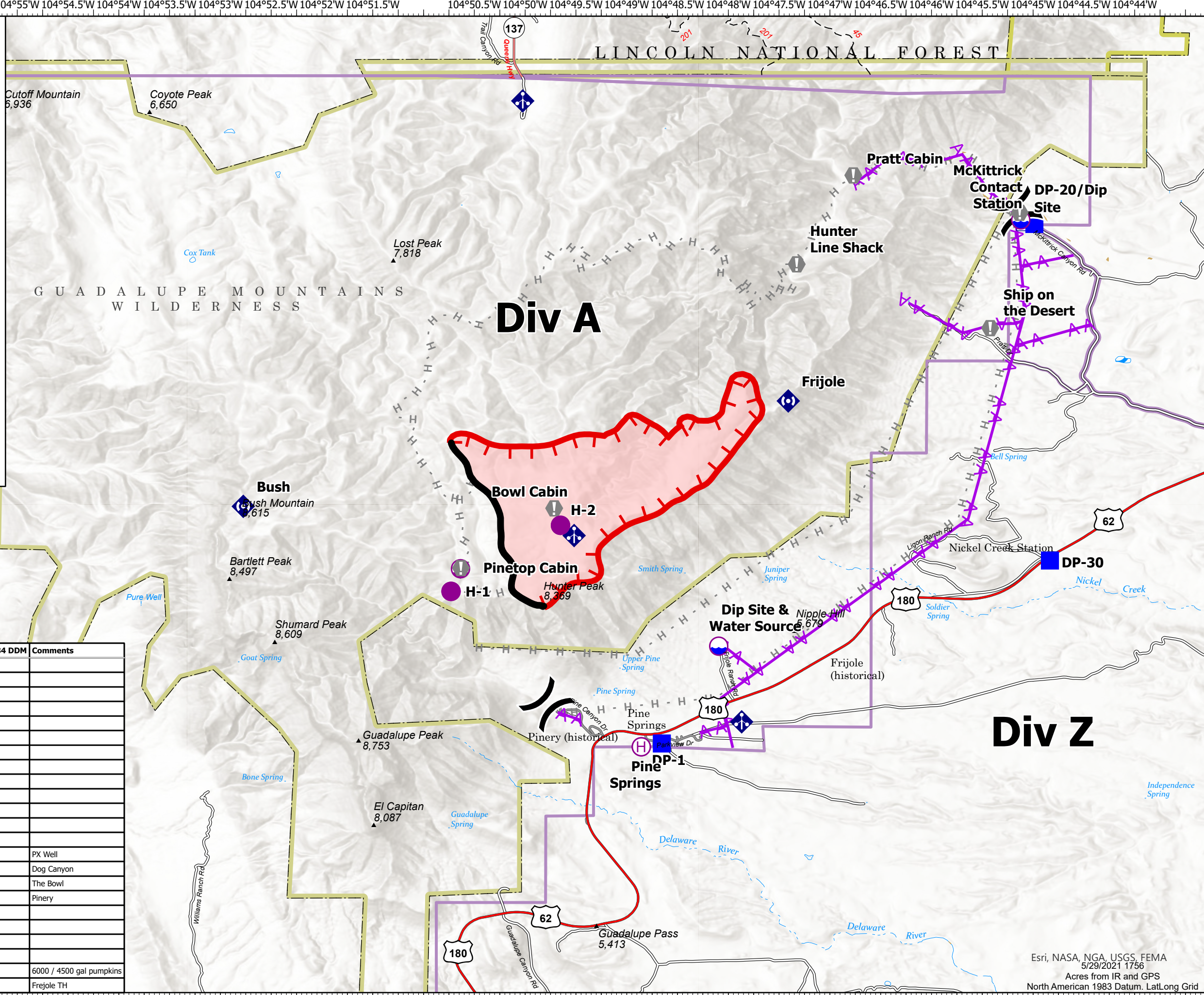
Dog
TXGUP-159
05/30/21 Day

1959 acres at 05/29/2021 @ 1700



- Dip Site
- Helispot
- Helibase
- Sling Site
- Division Break
- Drop Point
- Value at Risk
- Mobile Weather Unit
- Repeater
- Planned Hand Line
- Aerial Hazard
- Fire Edge
- Contained Line
- Wildfire Daily Fire Perimeter

FC Point Type	Label	Latitude WGS84 DDM	Longitude WGS84 DDM	Comments
Value at Risk	Pinetop Cabin	31° 55.181' N	104° 50.633' W	
Helispot	H-1	31° 54.950' N	104° 50.730' W	
Helispot	H-2	31° 55.600' N	104° 49.653' W	
Helibase	Pine Springs	31° 53.420' N	104° 48.857' W	
Drop Point	DP-1	31° 53.453' N	104° 48.655' W	
Value at Risk	Bowl Cabin	31° 55.769' N	104° 49.715' W	
Division Break	Z/A Break (South)	31° 53.838' N	104° 49.787' W	
Division Break	A/Z Break (North)	31° 58.692' N	104° 45.171' W	
Sling Site	At Pinetop Cabin	31° 55.173' N	104° 50.637' W	
Drop Point	DP-20/Dip Site	31° 58.566' N	104° 44.988' W	
Value at Risk	McKittrick Contact Station	31° 58.678' N	104° 45.132' W	
Value at Risk	Ship on the Desert	31° 57.543' N	104° 45.422' W	
Drop Point	DP-30	31° 55.254' N	104° 44.834' W	
Mobile Weather Unit		31° 58.351' N	104° 56.882' W	PX Well
Mobile Weather Unit		31° 59.778' N	104° 50.024' W	Dog Canyon
Mobile Weather Unit		31° 55.500' N	104° 49.518' W	The Bowl
Mobile Weather Unit		31° 53.666' N	104° 47.869' W	Pinery
Value at Risk	Pratt Cabin	31° 59.046' N	104° 46.770' W	
Value at Risk	Hunter Line Shack	31° 58.171' N	104° 47.327' W	
Repeater	Bush	31° 55.787' N	104° 52.776' W	
Repeater	Frijole	31° 56.824' N	104° 47.410' W	
Dip Site	Dip Site	31° 58.606' N	104° 45.122' W	6000 / 4500 gal pumpkins
Dip Site	Dip Site & Water Source	31° 54.411' N	104° 48.095' W	Frejole TH



Esri, NASA, NGA, USGS, FEMA
5/29/2021 1756
Acres from IR and GPS
North American 1983 Datum, LatLong Grid