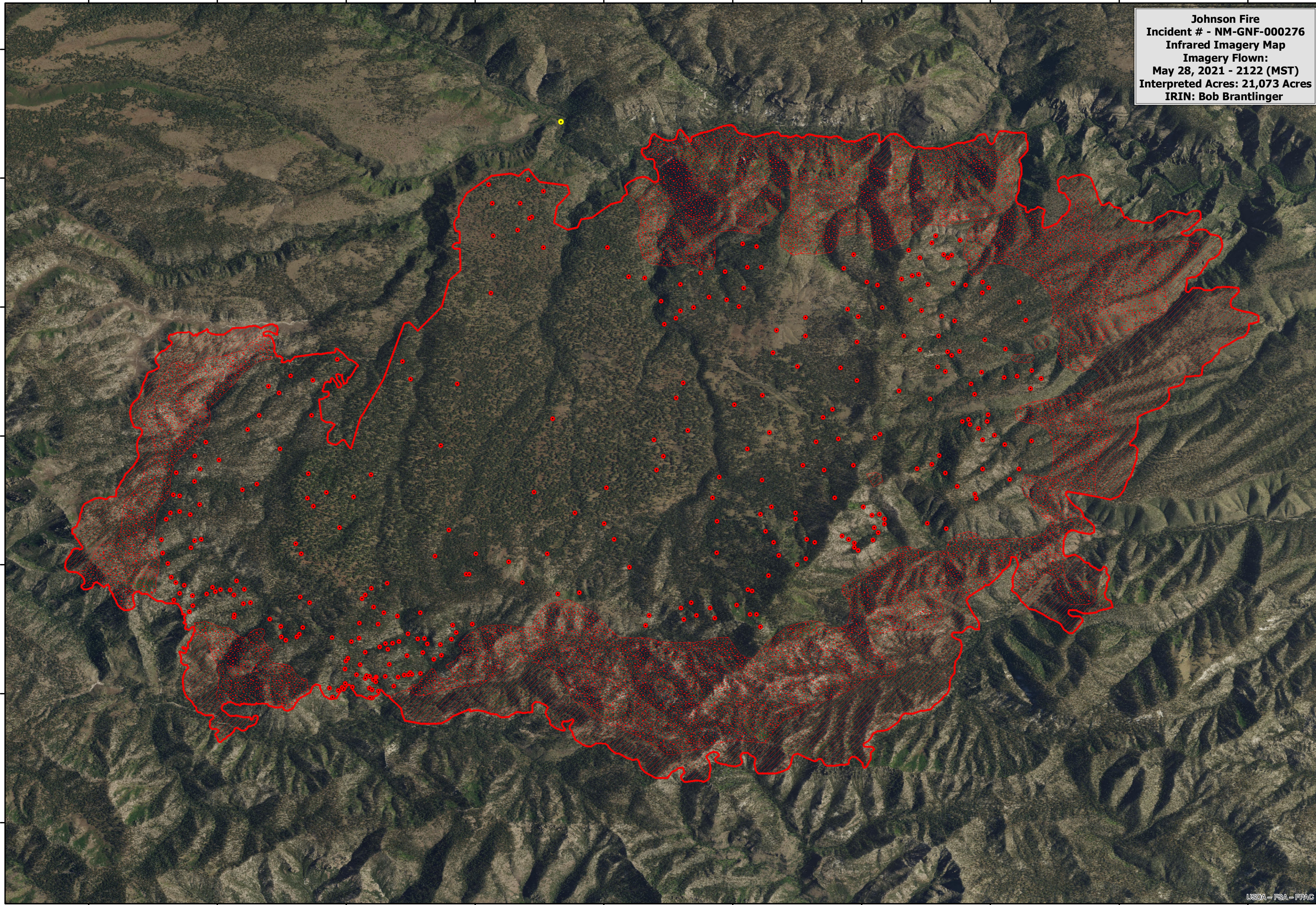


108°31'0"W 108°30'0"W 108°29'0"W 108°28'0"W 108°27'0"W 108°26'0"W 108°25'0"W 108°24'0"W 108°23'0"W 108°22'0"W

Johnson Fire
Incident # - NM-GNF-000276
Infrared Imagery Map
Imagery Flown:
May 28, 2021 - 2122 (MST)
Interpreted Acres: 21,073 Acres
IRIN: Bob Brantlinger




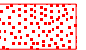
33°17'0"N
33°16'0"N
33°15'0"N
33°14'0"N
33°13'0"N
33°12'0"N
33°11'0"N



USDA - FSA - FPAC

108°31'0"W 108°30'0"W 108°29'0"W 108°28'0"W 108°27'0"W 108°26'0"W 108°25'0"W 108°24'0"W 108°23'0"W 108°22'0"W

Legend

	Heat Perimeter		Isolated Heat Source
	Intense Heat		Scattered Heat Source

