

Near Term Fire Behavior

McDonald Tank
AZ-FTA-000336
5/27/21 Day

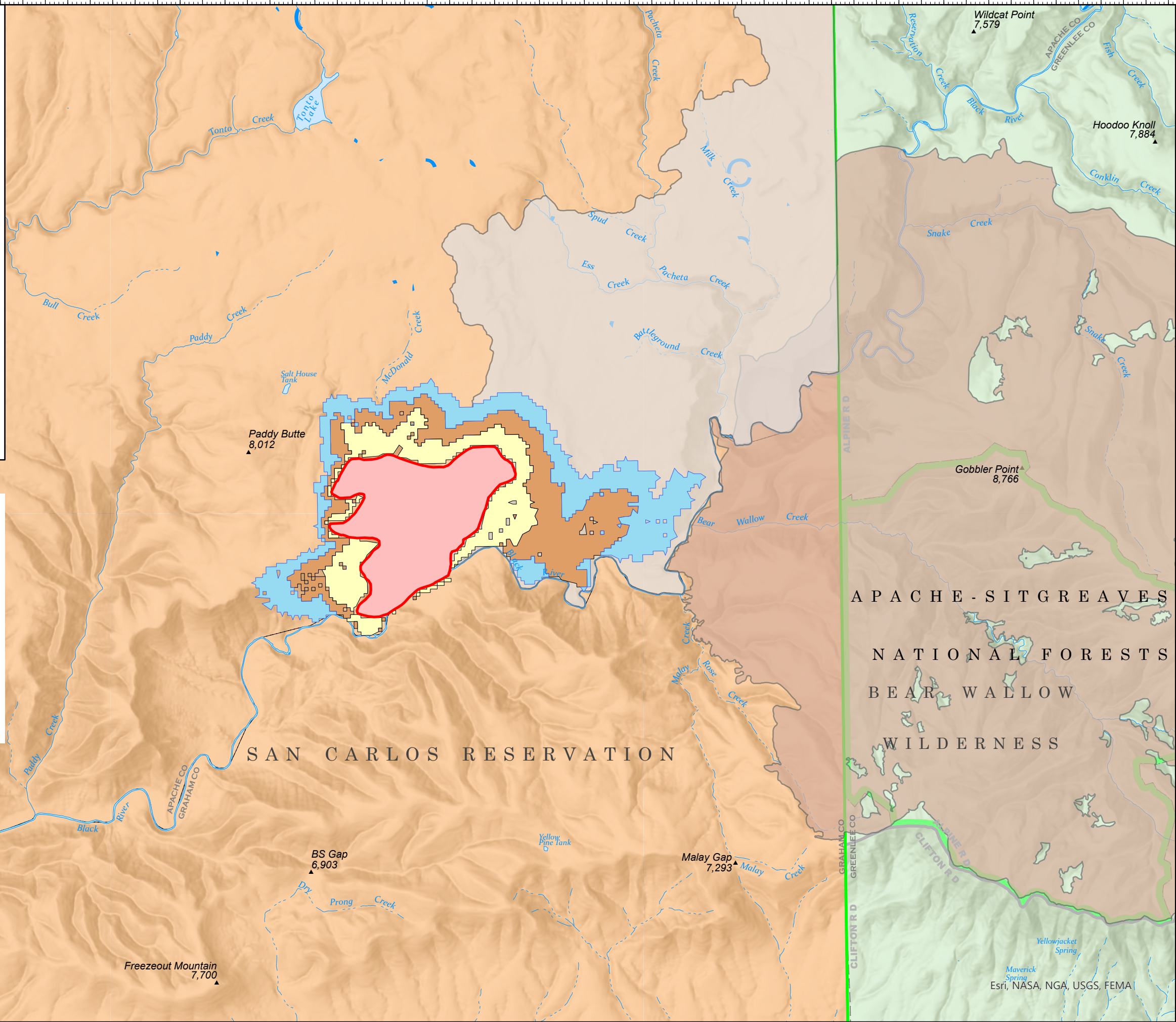
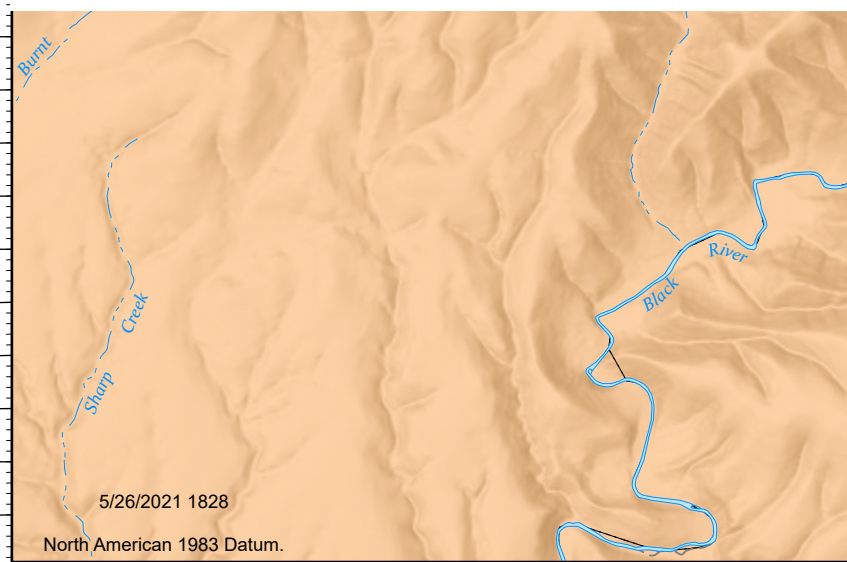
1252 acres at
5/26/21 via VIIRS

- 05/26
- 05/27
- 05/28
- Wallow Fire Scar 2011
- Rattlesnake Fire Scar 2018
- Perim_VIIRS_0526_am



This NTFB shows the modeled daily fire spread over the next three days using the forecasted weather from the Mountain Lion RAWS. The fire and ignition perimeters were traced for the VIIRS at 03:00 on 05/26. A Barrier was placed along the Black River, no suppression was modeled. The default Fuel Models from Landfire 2020 fuels were used and the fuel moistures were adjusted to better approximate the actual fuel conditions.

This model shows an approximately a 0.5 mile spread to the east on the first day (05/26) and a 1 mile spread the next day. Keep in mind; no suppression was modeled, the Black River Drainage will locally modify the wind speed and direction, and there will be a moist micro-climate in the area of the river. The model will be updated as a more accurate perimeter is obtained or as the weather forecast becomes updated.



Wildcat Point
7,579

Hoodoo Knoll
7,884

Gobbler Point
8,766

BS Gap
6,903

Malay Gap
7,293

Freezeout Mountain
7,700

Esri, NASA, NGA, USGS, FEMA