

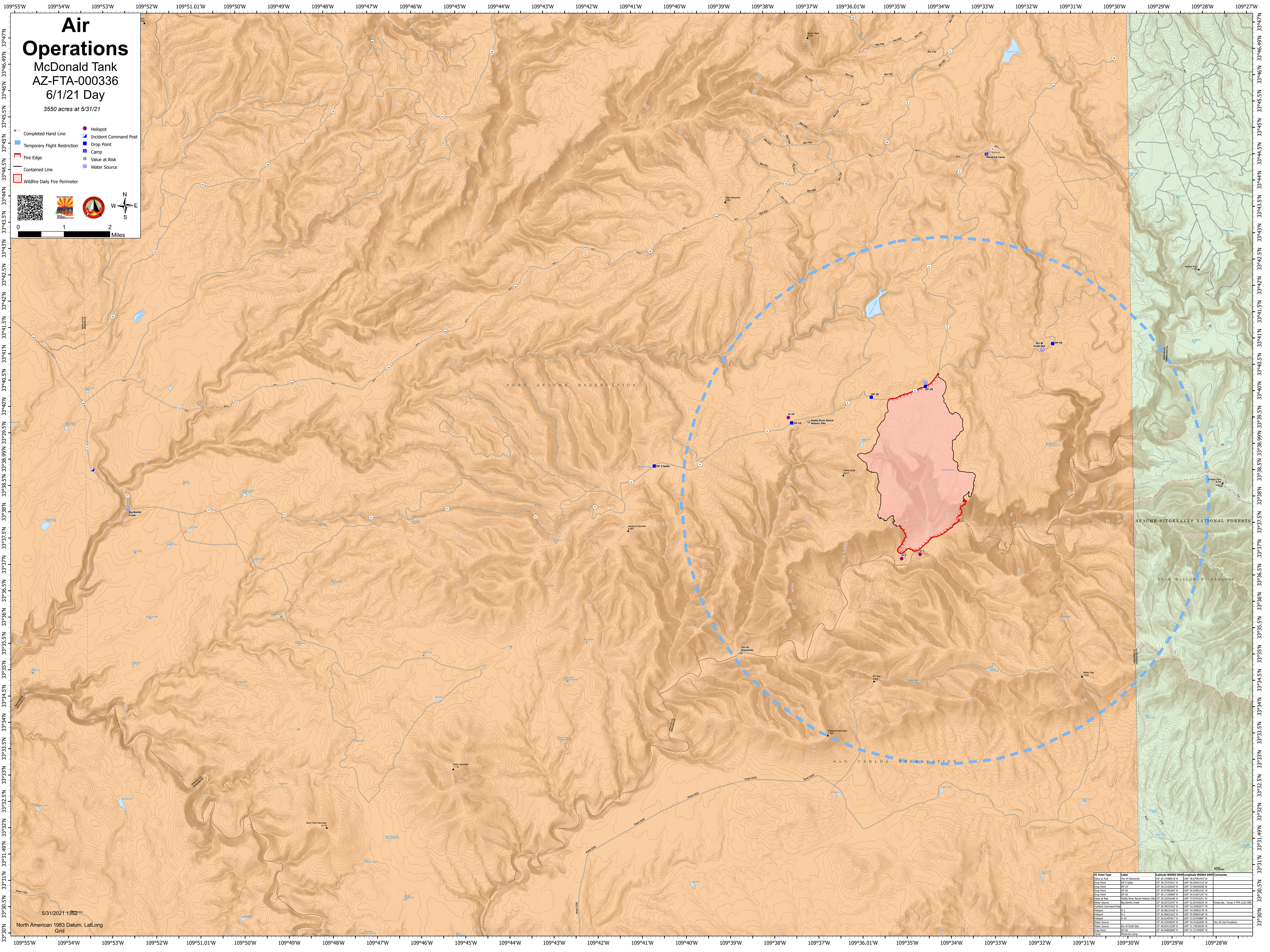
# Air Operations

McDonald Tank  
AZ-FTA-000336  
6/1/21 Day

3550 acres at 5/31/21

- Completed Hand Line
- Temporary Flight Restriction
- Fire Edge
- Contained Line
- Wildfire Daily Fire Perimeter
- Helispot
- Incident Command Post
- Drop Point
- Camp
- Value at Risk
- Water Source

0 1 2 Miles



5/31/2021 1352  
North American 1983 Datum, LatLong Grid

| IC Point Type         | Label                           | Latitude WGS84 | Longitude WGS84 | Comments |
|-----------------------|---------------------------------|----------------|-----------------|----------|
| Value at Risk         | San of Diamonds                 | 33°37'52.11" N | 109°41'51.11" W |          |
| Drop Point            | DP-5 Spike                      | 33°37'52.11" N | 109°41'51.11" W |          |
| Drop Point            | DP-10                           | 33°37'52.11" N | 109°41'51.11" W |          |
| Drop Point            | DP-20                           | 33°37'52.11" N | 109°41'51.11" W |          |
| Drop Point            | DP-30                           | 33°37'52.11" N | 109°41'51.11" W |          |
| Value at Risk         | Paddy River Ranch Helispot Site | 33°37'52.11" N | 109°41'51.11" W |          |
| Incident Command Post | San Carlos                      | 33°37'52.11" N | 109°41'51.11" W |          |
| Helispot              | DP-1                            | 33°37'52.11" N | 109°41'51.11" W |          |
| Helispot              | DP-2                            | 33°37'52.11" N | 109°41'51.11" W |          |
| Helispot              | DP-3                            | 33°37'52.11" N | 109°41'51.11" W |          |
| Water Source          | San Carlos                      | 33°37'52.11" N | 109°41'51.11" W |          |
| Water Source          | San Carlos                      | 33°37'52.11" N | 109°41'51.11" W |          |
| Drop Point            | DP-10                           | 33°37'52.11" N | 109°41'51.11" W |          |
| Camp                  | McDonald Tank                   | 33°37'52.11" N | 109°41'51.11" W |          |