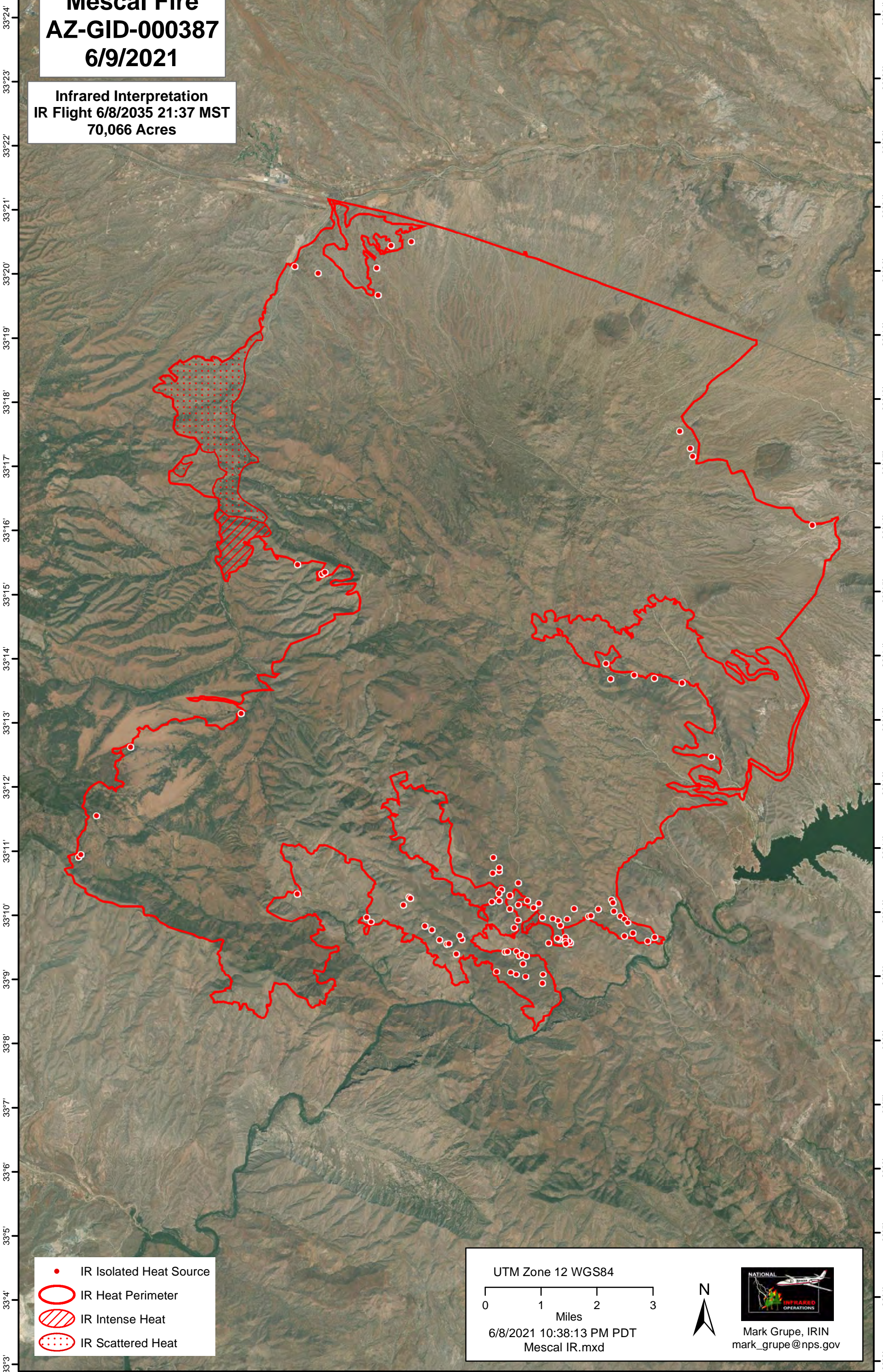


-110°44' -110°43' -110°42' -110°41' -110°40' -110°39' -110°38' -110°37' -110°36' -110°35' -110°34' -110°33' -110°32' -110°31' -110°30'

# Mescal Fire AZ-GID-000387 6/9/2021

Infrared Interpretation  
IR Flight 6/8/2021 21:37 MST  
70,066 Acres



33°24'  
33°23'  
33°22'  
33°21'  
33°20'  
33°19'  
33°18'  
33°17'  
33°16'  
33°15'  
33°14'  
33°13'  
33°12'  
33°11'  
33°10'  
33°9'  
33°8'  
33°7'  
33°6'  
33°5'  
33°4'  
33°3'


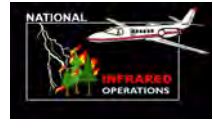
33°24'  
33°23'  
33°22'  
33°21'  
33°20'  
33°19'  
33°18'  
33°17'  
33°16'  
33°15'  
33°14'  
33°13'  
33°12'  
33°11'  
33°10'  
33°9'  
33°8'  
33°7'  
33°6'  
33°5'  
33°4'  
33°3'

- IR Isolated Heat Source
- IR Heat Perimeter
- ▨ IR Intense Heat
- IR Scattered Heat

UTM Zone 12 WGS84

0 1 2 3  
Miles

6/8/2021 10:38:13 PM PDT  
Mescal IR.mxd

Mark Grupe, IRIN  
mark\_grupe@nps.gov

-110°44' -110°43' -110°42' -110°41' -110°40' -110°39' -110°38' -110°37' -110°36' -110°35' -110°34' -110°33' -110°32' -110°31' -110°30'