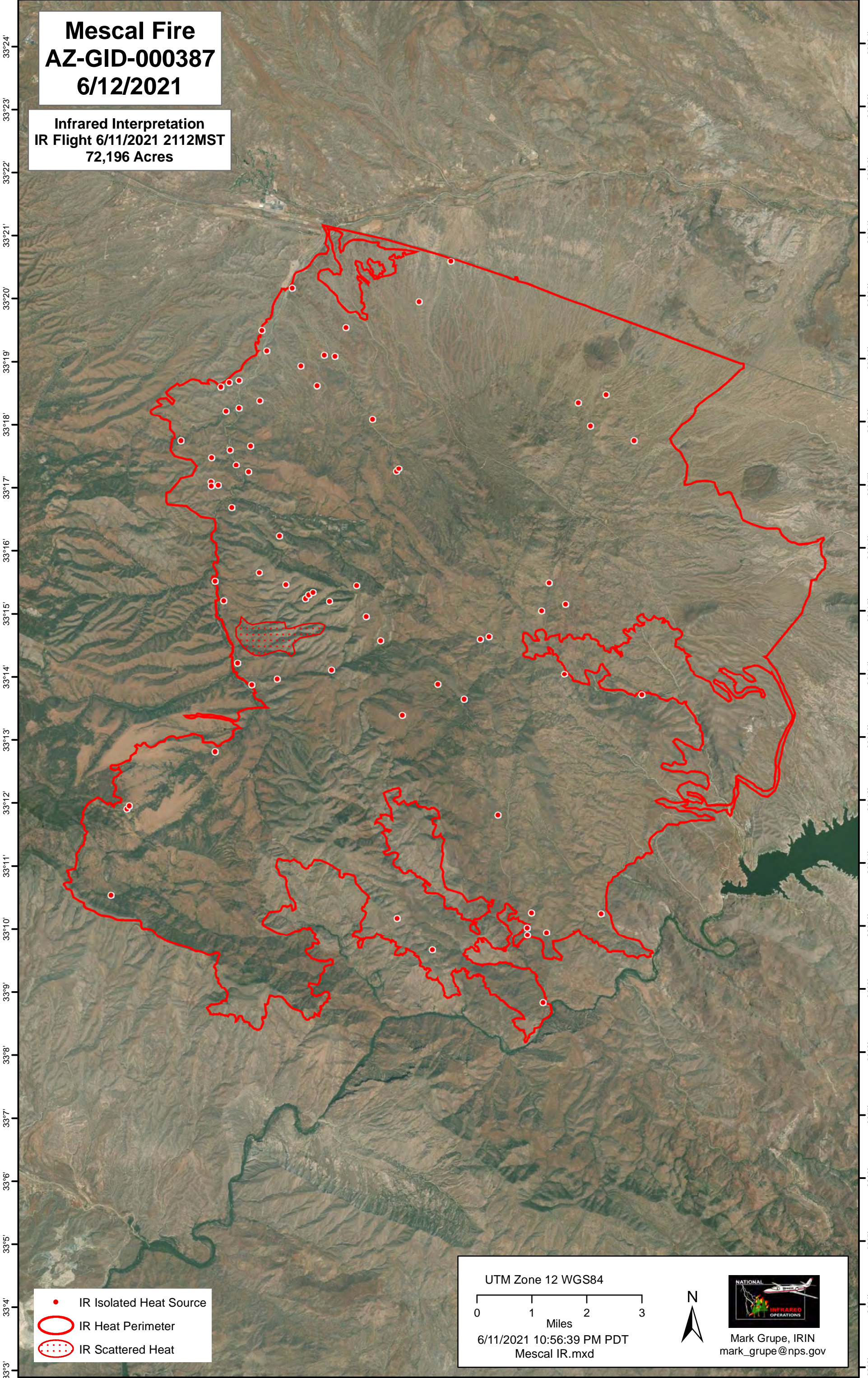


-110°44' -110°43' -110°42' -110°41' -110°40' -110°39' -110°38' -110°37' -110°36' -110°35' -110°34' -110°33' -110°32' -110°31' -110°30'

Mescal Fire AZ-GID-000387 6/12/2021

Infrared Interpretation
IR Flight 6/11/2021 2112MST
72,196 Acres



33°24'
33°23'
33°22'
33°21'
33°20'
33°19'
33°18'
33°17'
33°16'
33°15'
33°14'
33°13'
33°12'
33°11'
33°10'
33°9'
33°8'
33°7'
33°6'
33°5'
33°4'
33°3'


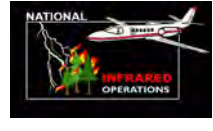
33°24'
33°23'
33°22'
33°21'
33°20'
33°19'
33°18'
33°17'
33°16'
33°15'
33°14'
33°13'
33°12'
33°11'
33°10'
33°9'
33°8'
33°7'
33°6'
33°5'
33°4'
33°3'

- IR Isolated Heat Source
- IR Heat Perimeter
- ◌ IR Scattered Heat

UTM Zone 12 WGS84

0 1 2 3
Miles

6/11/2021 10:56:39 PM PDT
Mescal IR.mxd

Mark Grupe, IRIN
mark_grupe@nps.gov

-110°44' -110°43' -110°42' -110°41' -110°40' -110°39' -110°38' -110°37' -110°36' -110°35' -110°34' -110°33' -110°32' -110°31' -110°30'