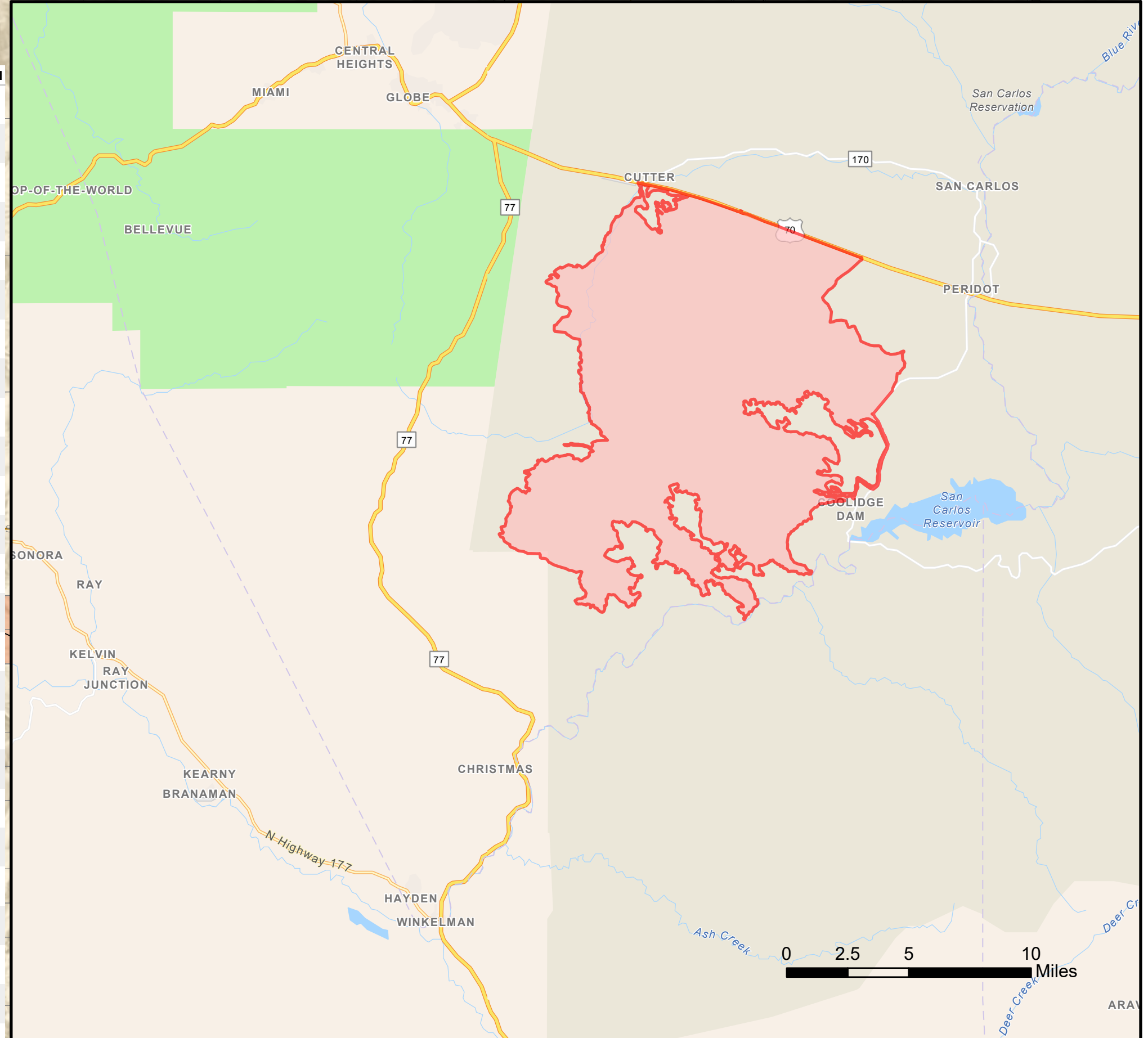


# SAN CARLOS RESERVATION

FC Point Type	Label	Latitude WGS84 DDM	Longitude WGS84 DDM
Helispot		33° 25.086' N	110° 42.923' W
Incident Command Post		33° 25.149' N	110° 42.846' W
Dip Site	Globe Heavy Dip	33° 28.287' N	110° 46.792' W
Drop Point	95	33° 14.120' N	110° 40.903' W
Dip Site	75	33° 07.119' N	110° 39.751' W
Drop Point	75	33° 14.120' N	110° 46.792' W
Dip Site	75	33° 10.172' N	110° 31.889' W
Dip Site	75	33° 09.671' N	110° 32.913' W
Drop Point	75	33° 12.307' N	110° 46.329' W
Closure		33° 00.095' N	110° 45.957' W
Dip Site	700 Rd Dip	33° 19.581' N	110° 40.303' W
Drop Point	65	33° 05.505' N	110° 46.329' W
Drop Point	45	33° 11.700' N	110° 31.203' W
Drop Point	30	33° 14.293' N	110° 30.821' W
Drop Point	73	33° 14.292' N	110° 40.903' W
Drop Point	73	33° 12.813' N	110° 45.935' W
Drop Point	71	33° 13.639' N	110° 43.635' W
Repeater	CHD 8	33° 15.247' N	110° 38.224' W
Repeater	CHD 7	33° 16.938' N	110° 49.263' W
Repeater	AC Link	33° 18.971' N	110° 49.349' W
Hazard	Pipeline Feature	33° 21.970' N	110° 43.152' W
Closure		33° 21.467' N	110° 39.900' W
Closure		33° 17.911' N	110° 27.556' W
Dip Site	Tribal Farms Dip	33° 15.767' N	110° 27.196' W
Drop Point	41	33° 11.811' N	110° 32.798' W
Lookout		33° 14.015' N	110° 46.491' W
Lookout		33° 14.027' N	110° 45.827' W
Lookout		33° 18.408' N	110° 41.979' W
Helispot	2	33° 12.690' N	110° 43.258' W
Gate		33° 14.423' N	110° 45.490' W
Gate		33° 14.292' N	110° 40.903' W
Road Repair		33° 13.763' N	110° 45.687' W
Water Source		33° 21.467' N	110° 45.887' W
Dip Site	Apache Gold Dip	33° 21.464' N	110° 41.600' W
Helispot	3	33° 11.419' N	110° 43.361' W
Dip Site	Division Golf Dip	33° 14.211' N	110° 46.828' W
Helispot	1	33° 14.210' N	110° 46.828' W
Gate		33° 12.465' N	110° 47.536' W
Helibase	Cutter	33° 21.284' N	110° 40.892' W
Gate		33° 14.227' N	110° 43.227' W
Water Source		33° 21.004' N	110° 43.171' W
Repair Point		33° 13.251' N	110° 44.702' W
Fence - Cut/Damaged		33° 13.272' N	110° 44.621' W
Fence - Cut/Damaged		33° 13.281' N	110° 44.662' W
Fence - Cut/Damaged		33° 13.272' N	110° 44.651' W
Gate			
Clean Up Area			



## Mescal

AZ-GID-000387  
06/10/2021  
Transportation

<ul style="list-style-type: none"> <li>● Avoidance Area</li> <li>● Label Point</li> <li>● Aerial Hazard</li> <li>● Dip Site</li> <li>● Helispot</li> <li>● Helibase</li> <li>● Division Break</li> <li>● Incident Command Post</li> <li>● Drop Point</li> </ul>	<ul style="list-style-type: none"> <li>● Repeater</li> <li>● Hazard</li> <li>● Water Source</li> <li>● Event Line</li> <li>● Ops Completed</li> <li>● Completed Hand Line</li> <li>● Completed Mixed Construction Line</li> <li>● Completed Road as Line</li> </ul>	<ul style="list-style-type: none"> <li>● Ops Planned</li> <li>● Planned Mixed Construction Line</li> <li>● Planned Road as Line</li> <li>● Planned Secondary Line</li> <li>● Reference</li> <li>● Access or Improved Road</li> <li>● Highlighted Feature</li> <li>● Air Ops</li> <li>● Route</li> </ul>	<ul style="list-style-type: none"> <li>● Fire Perimeter</li> <li>● Fire Edge</li> <li>● Contained Line</li> <li>● Wildfire Daily Fire Perimeter</li> <li>● Paved Secondary</li> <li>● Other</li> <li>● - 1 - Not Designated</li> <li>● - 2 - Other National Designations</li> <li>● Main, Non-Mainline Active</li> </ul>	<ul style="list-style-type: none"> <li>● Runways</li> <li>● National Roads Hwy</li> <li>● BLM</li> <li>● BOR</li> <li>● City</li> <li>● State</li> <li>● San Carlos Reservation</li> <li>● San Carlos Reservation - Private</li> </ul>
---	---	---	--	--

0 2.5 5 10 Miles

0 2.5 5 10 Kilometers

GIS Calculated Acres from IR

72,250 Acres

As of June 8 21:37

NAD 1983 UTM Zone 13N

Created: 06/10/2021 1:50:00