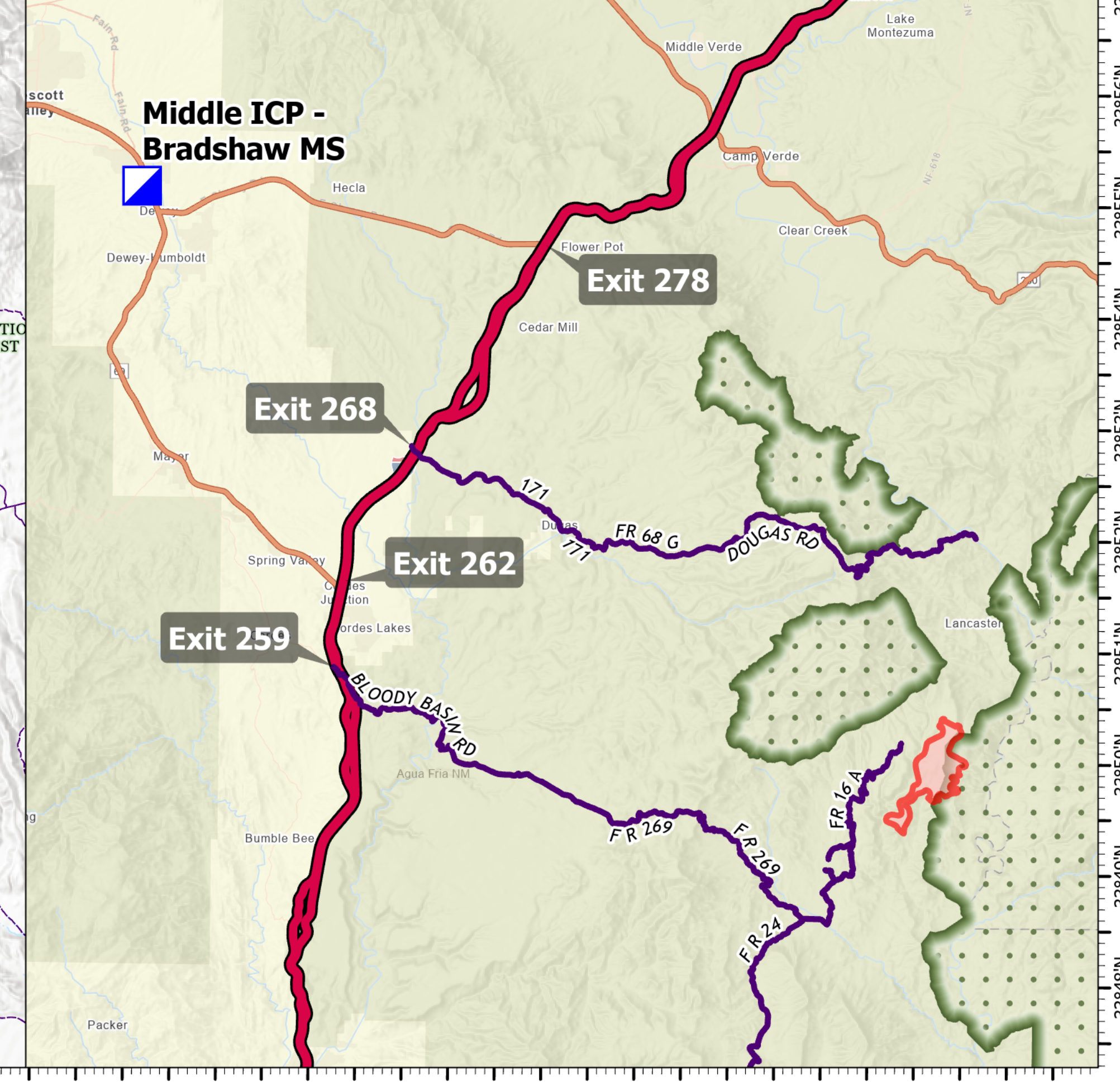


FC Point Type	Label	Comments	Latitude WGS84 DDM	Longitude WGS84 DDM
Check Point		UTV access	34° 21.737' N	111° 51.631' W
Check Point		UTV Access Only recommended	34° 21.554' N	111° 52.054' W
Drop Point	10	Orme/Douglas Exit	34° 24.103' N	112° 04.281' W
Drop Point	50	Division delta access road	34° 16.990' N	112° 07.121' W
Drop Point	75		34° 12.692' N	111° 54.807' W
Helispot	1	Approved for Type 3	34° 14.227' N	111° 46.219' W
Helispot	3	Approved for Type 3	34° 04.800' N	111° 42.451' W
Helispot	2	Approved for Type 3	34° 06.763' N	111° 46.411' W
Internet Access	Cell On Wheels	needs diesel fuel every other day	34° 12.714' N	111° 53.386' W
Mobile Weather Unit		664 Rd RAWs	34° 14.760' N	111° 46.247' W
Staging Area		Game & Fish property	34° 15.536' N	112° 03.514' W
Value at Risk	Cow Camp	Aerial Recon	34° 15.626' N	111° 45.384' W
Value at Risk	Corral	Aerial Recon	34° 12.364' N	111° 53.937' W
Value at Risk	Cow Camp	Aerial Recon	34° 21.606' N	111° 42.801' W
Value at Risk	Large Cow Camp	Aerial Recon	34° 05.245' N	111° 51.073' W
Value at Risk	Powerhouse	Aerial Recon	34° 20.818' N	111° 41.858' W
Value at Risk	Repeater	Aerial Recon	34° 20.455' N	111° 47.461' W
Value at Risk	Childs Cabin	Browns Ranch	34° 21.622' N	111° 42.814' W
Value at Risk	Child's Power Plant	Child's Power Plant	34° 20.957' N	111° 41.897' W
Value at Risk	MT Ranch	Child's Power Plant	34° 19.633' N	111° 45.208' W



TRANSPORTATION

Middle
AZ-TNF-1699
7/10/2021

2,399 acres at 7/8/2021 22:50

1:70,000 - SWIMT 4 - 7/9/2021 21:46
Acres from IR and GPS
North American 1983 Datum, LatLong Grid

- Check Point
- Helispot
- ⌘ Division Break
- Drop Point
- Ⓢ Staging Area
- ⊕ Value at Risk
- ⊗ Gate
- Ⓜ Mobile Weather Unit
- ◆ Internet Access
- Access or Improved Road
- Fire Edge
- ▭ Wildfire Daily Fire Perimeter
- Access Roads

