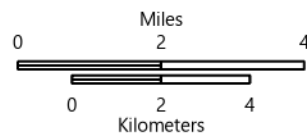


IAP

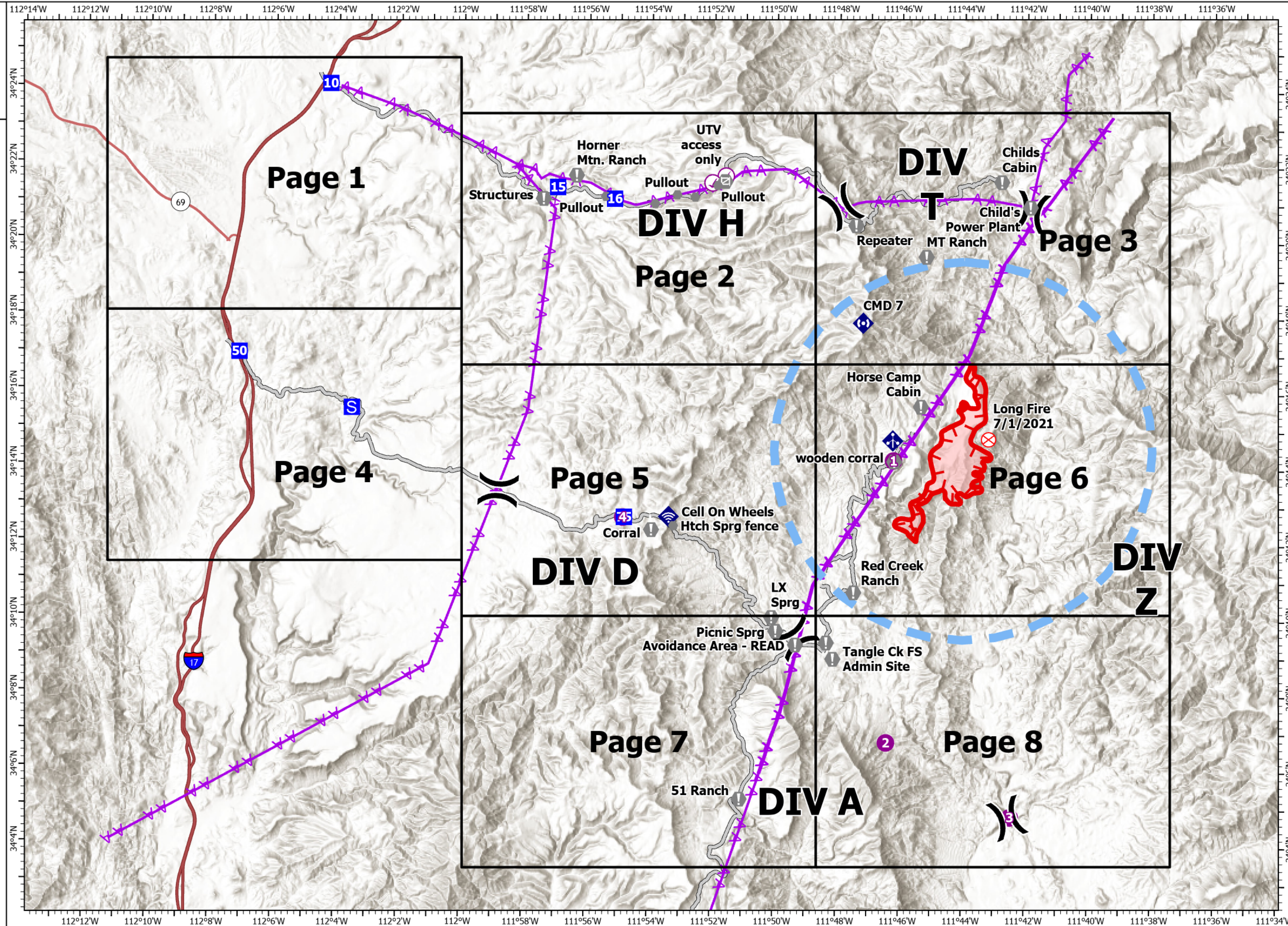
Middle
AZ-TNF-1699
7/11/2021

2,688 acres at 7/10/2021 15:00

- Check Point
- Helispot
-) Division Break
- Drop Point
- S Staging Area
- ⊗ Fire Origin
- Ⓜ Value at Risk
- Other
- Ⓜ Gate
- ◆ Mobile Weather Unit
- ◆ Internet Access
- ◆ Repeater
- Access or Improved Road
- ▲ Aerial Hazard
- Temporary Flight Restriction
- Fire Edge
- Wildfire Daily Fire Perimeter



1:170,000 - SWIMT 4 - 7/10/2021 2107
Acres from IR and GPS
North American 1983 Datum. Lat/Long Grid







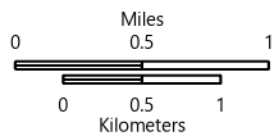
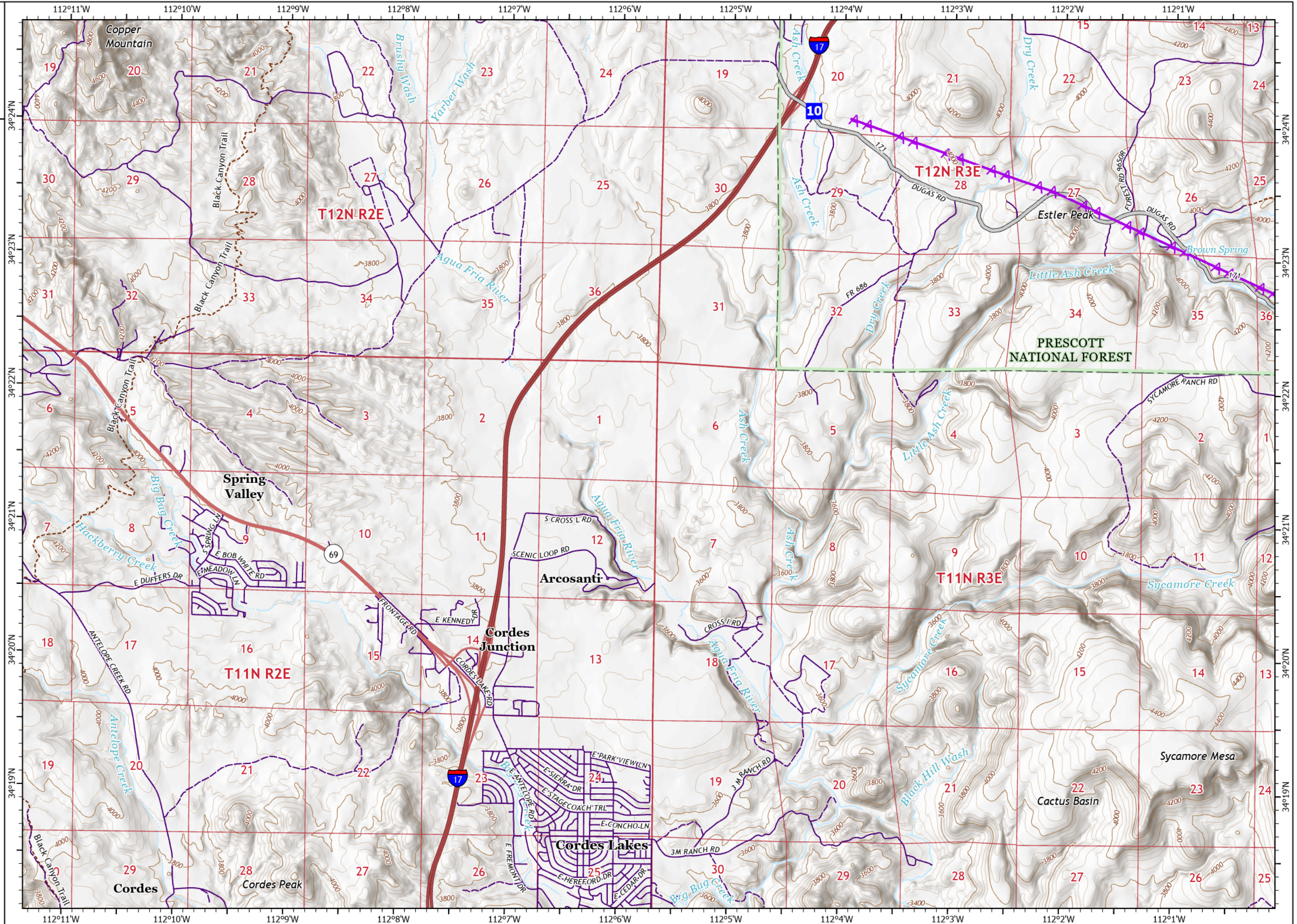
IAP

Middle
AZ-TNF-1699
7/11/2021

2,688 acres at 7/10/2021 15:00

Page 1

-  Drop Point
-  Access or Improved Road
-  Aerial Hazard
-  Access Roads



1:48,000 - SWIMT 4- 7/10/2021 2120
Acres from IR and GPS
North American 1983 Datum, Lat/Long Grid

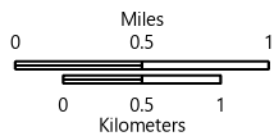
IAP

Middle
AZ-TNF-1699
7/11/2021

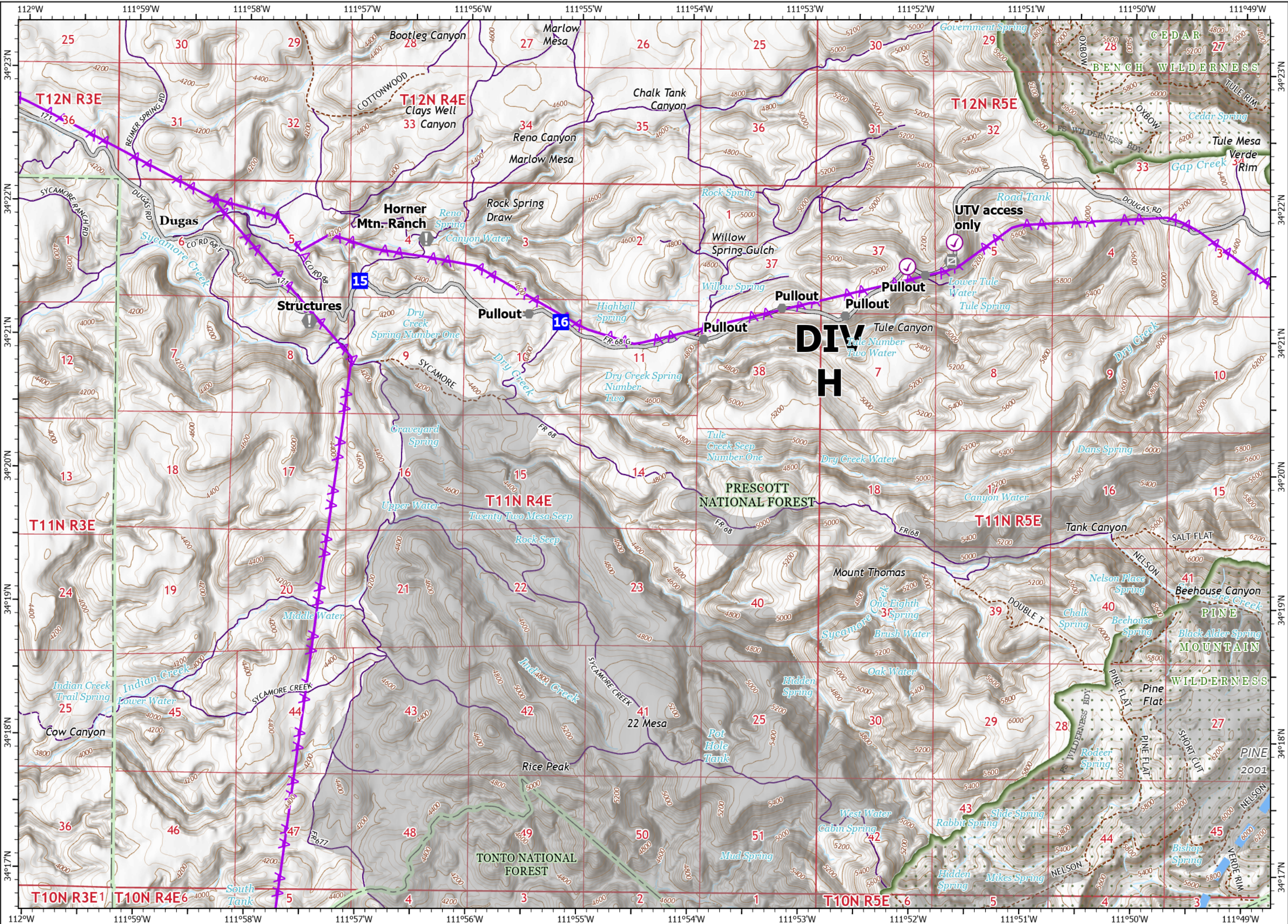
2,688 acres at 7/10/2021 15:00

Page 2

- ⊙ Check Point
- Drop Point
- ⊕ Value at Risk
- Other
- ⊘ Gate
- Access or Improved Road
- ⚡ Aerial Hazard
- Temporary Flight Restriction
- Access Roads



1:48,000 - SWIMT 4 - 7/10/2021 2120
Acres from IR and GPS
North American 1983 Datum. Lat/Long Grid

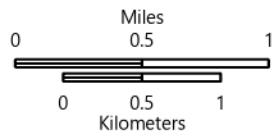


IAP

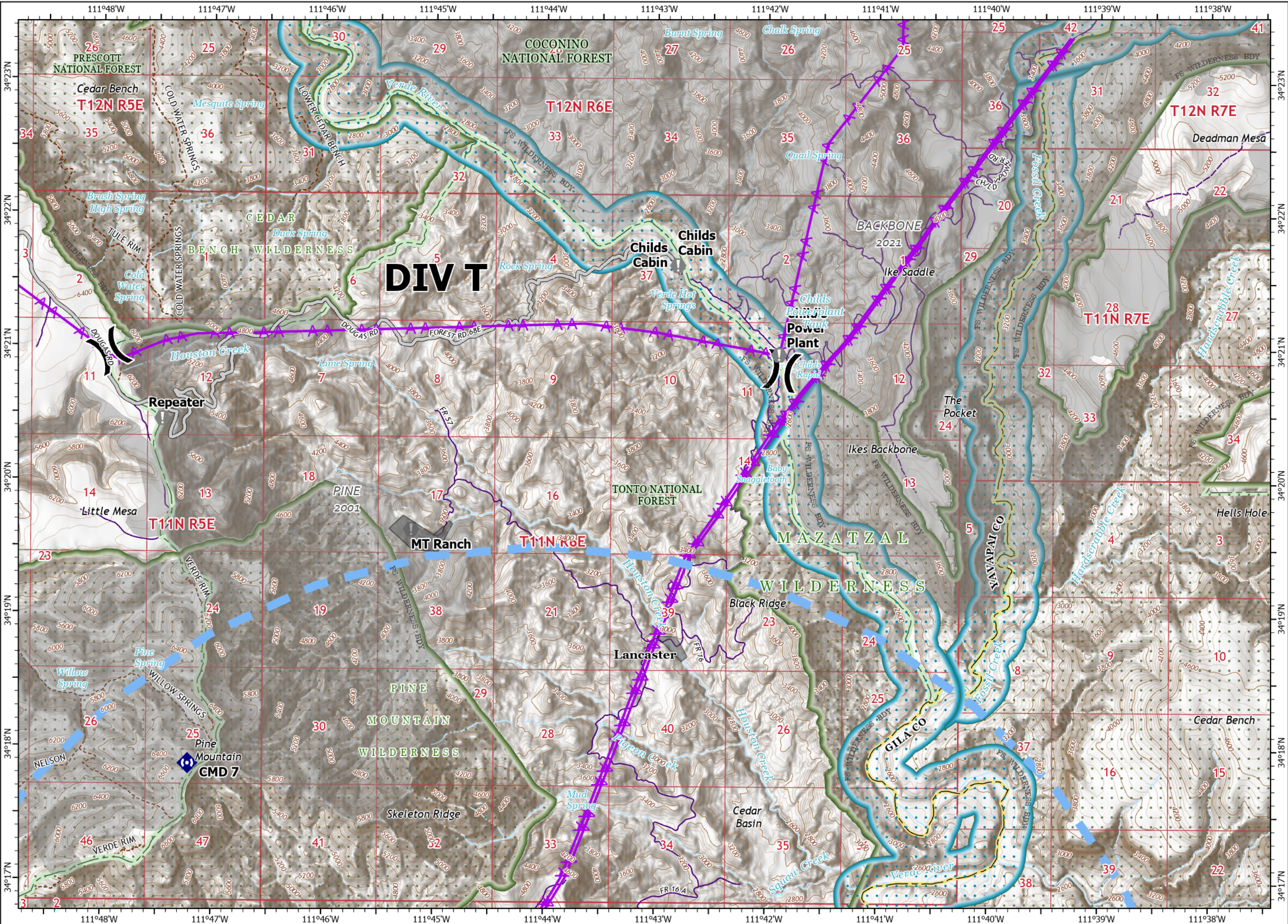
Middle
AZ-TNF-1699
7/11/2021
2,688 acres at 7/10/2021 15:00

Page 3

- (X) Division Break
- Value at Risk
- ◆ Repeater
- Access or Improved Road
- ▲ Aerial Hazard
- Temporary Flight Restriction
- Fire Edge
- Access Roads



1:48,000 - SWIMT 4 - 7/10/2021 2120
Acres from IR and GPS
North American 1983 Datum, Lat/Long Grid







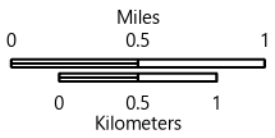
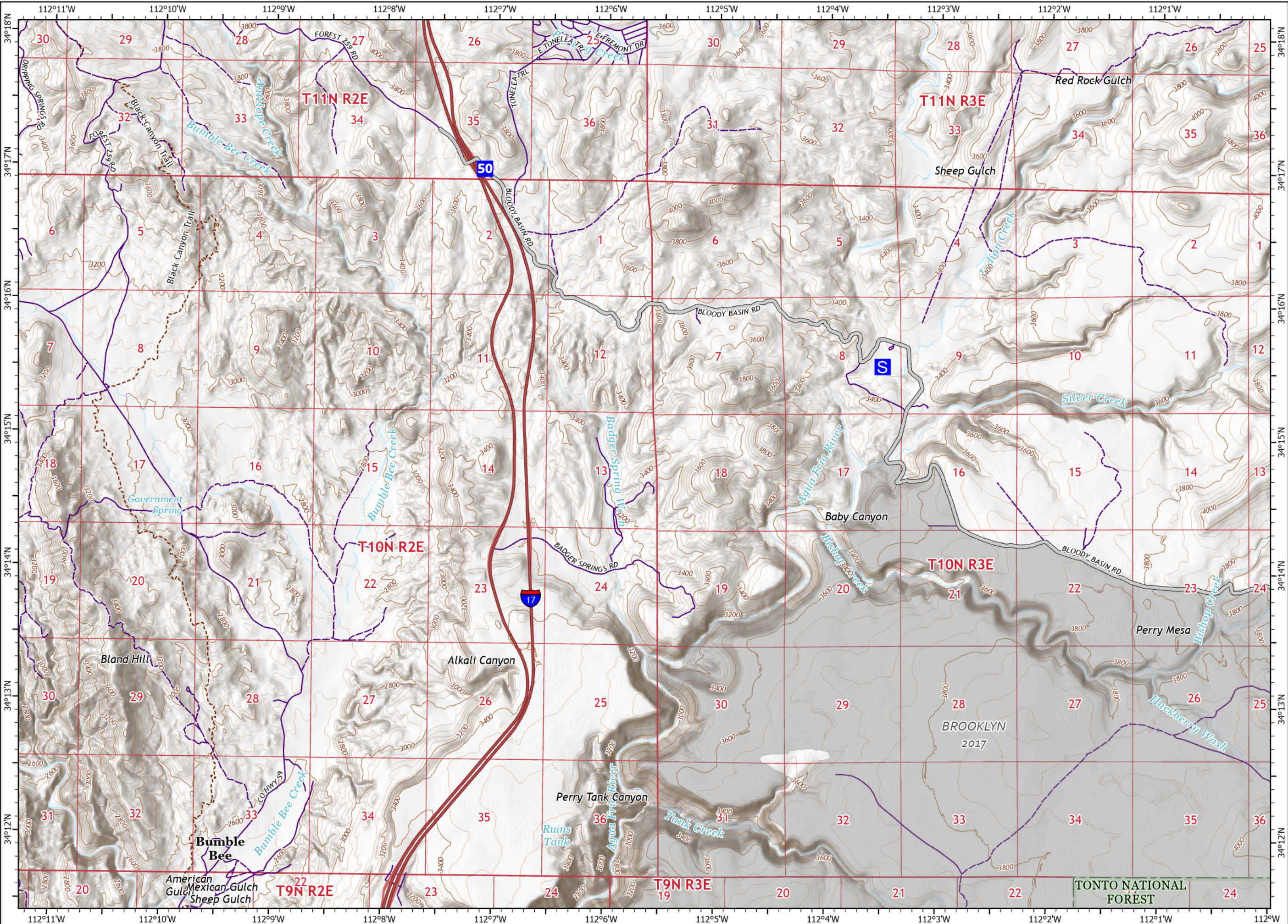
IAP

Middle
AZ-TNF-1699
7/11/2021

2,688 acres at 7/10/2021 15:00

Page 4

-  Drop Point
-  Staging Area
-  Access or Improved Road
-  Access Roads



1:48,000 - SWIMT 4- 7/10/2021 2121
Acres from IR and GPS
North American 1983 Datum. Lat/Long Grid

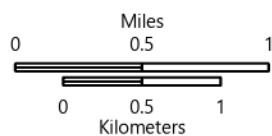
IAP

Middle
AZ-TNF-1699
7/11/2021

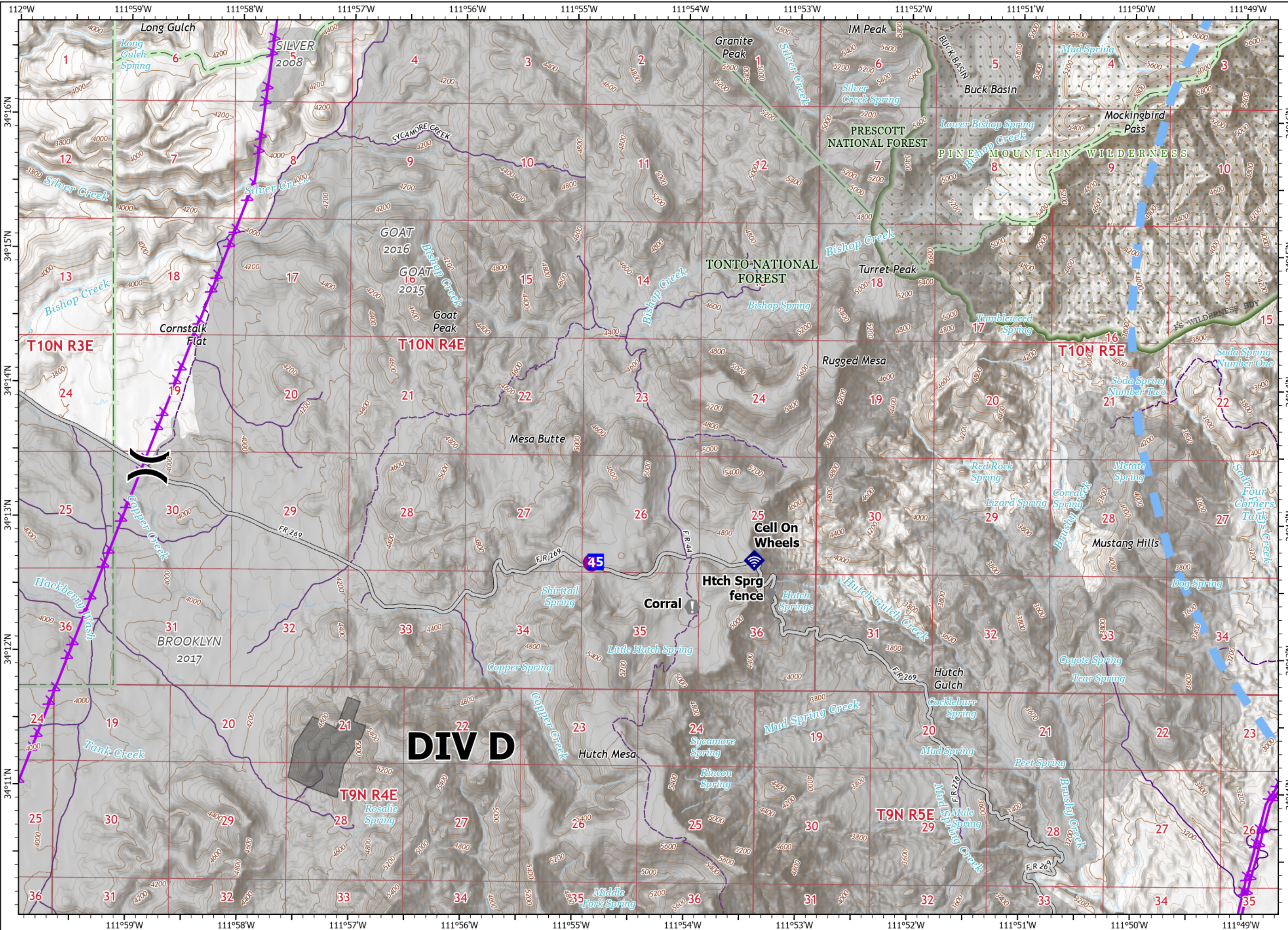
2,688 acres at 7/10/2021 15:00

Page 5

- Helispot
- ⌘ Division Break
- Drop Point
- Ⓢ Value at Risk
- Other
- ◆ Internet Access
- Access or Improved Road
- ▲ Aerial Hazard
- Temporary Flight Restriction
- Access Roads



1:48,000 - SWIMT 4 - 7/10/2021 2121
Acres from IR and GPS
North American 1983 Datum, Lat/Long Grid



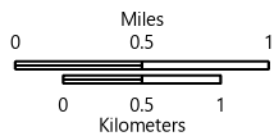
IAP

Middle
AZ-TNF-1699
7/11/2021

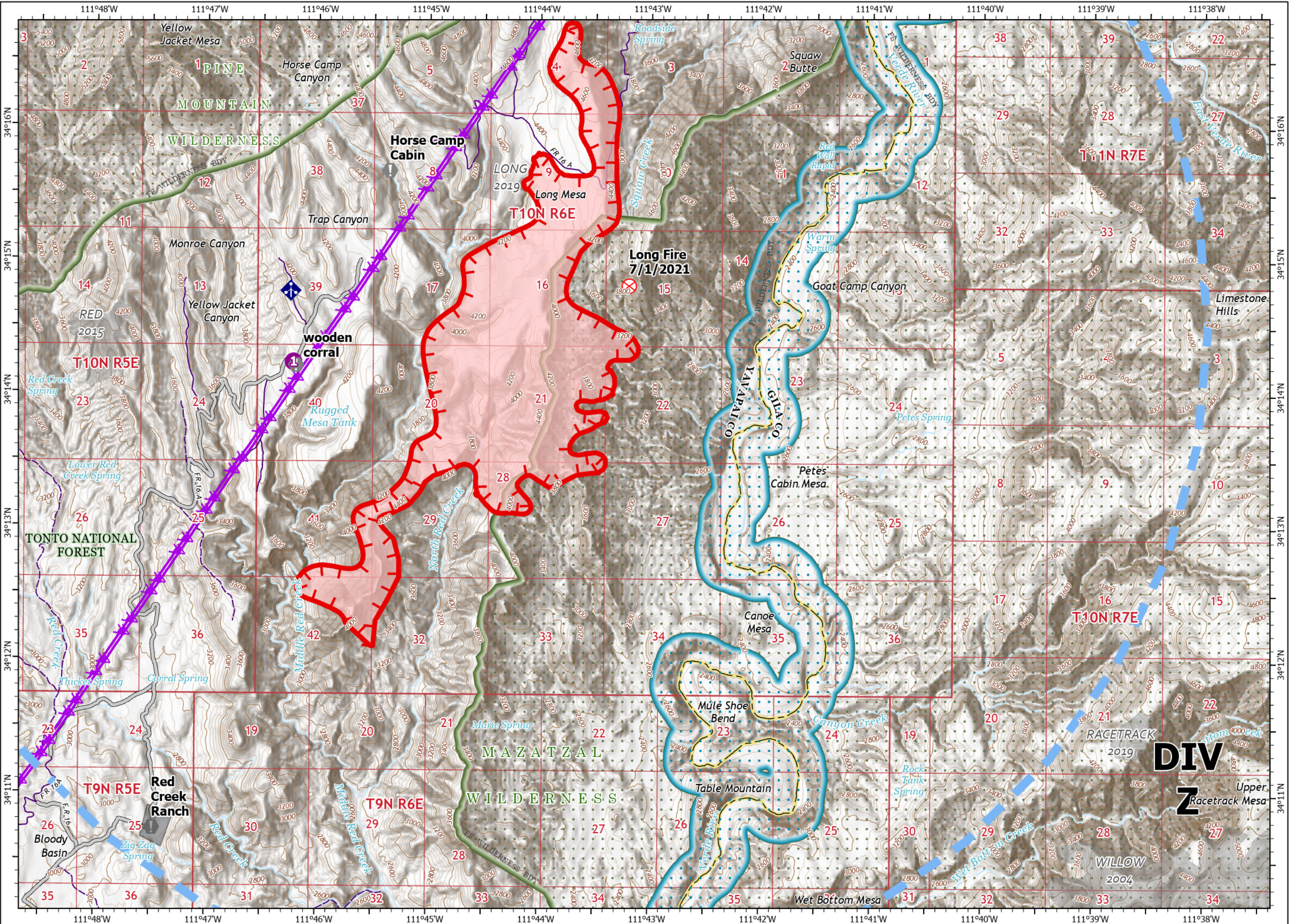
2,688 acres at 7/10/2021 15:00

Page 6

- Helispot
- ⊗ Fire Origin
- ⬇ Value at Risk
- ◆ Mobile Weather Unit
- Access or Improved Road
- ⚡ Aerial Hazard
- Temporary Flight Restriction
- Fire Edge
- Wildfire Daily Fire Perimeter
- Access Roads



1:48,000 - SWIMT 4- 7/10/2021 2122
Acres from IR and GPS
North American 1983 Datum. Lat/Long Grid



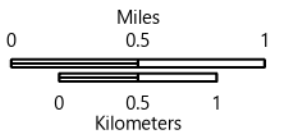
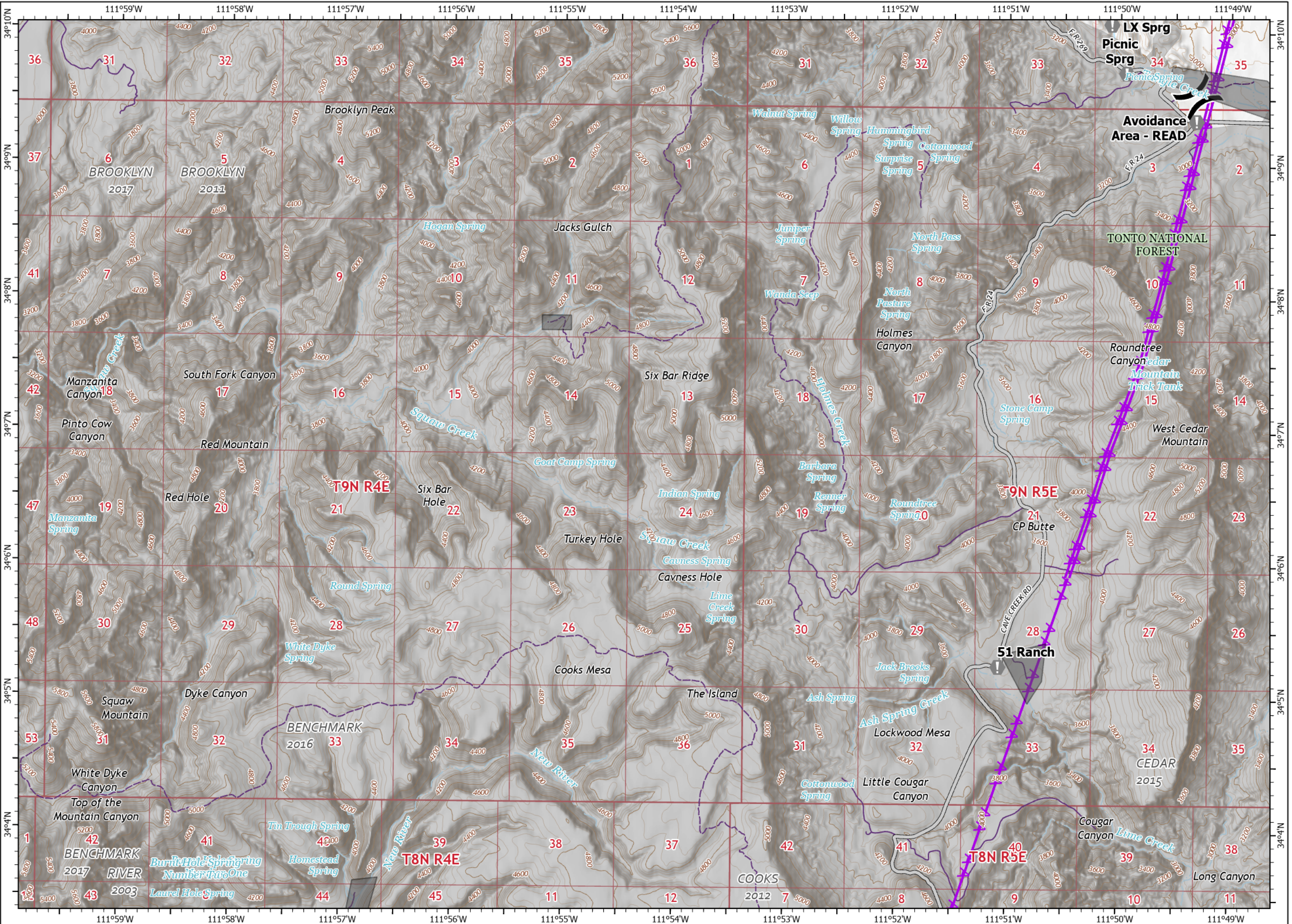
IAP

Middle
AZ-TNF-1699
7/11/2021

2,688 acres at 7/10/2021 15:00

Page 7

- Division Break
- Value at Risk
- Access or Improved Road
- Aerial Hazard
- Access Roads



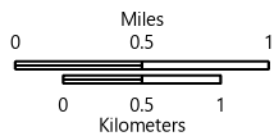
1:48,000 - SWIMT 4 - 7/10/2021 2122
Acres from IR and GPS
North American 1983 Datum, Lat/Long Grid

IAP

Middle
AZ-TNF-1699
7/11/2021
2,688 acres at 7/10/2021 15:00

Page 8

- Helispot
- ⌘ Division Break
- ⦿ Value at Risk
- Access or Improved Road
- Temporary Flight Restriction
- Access Roads



1:48,000 - SWIMT 4- 7/10/2021 2122
Acres from IR and GPS
North American 1983 Datum. Lat/Long Grid

