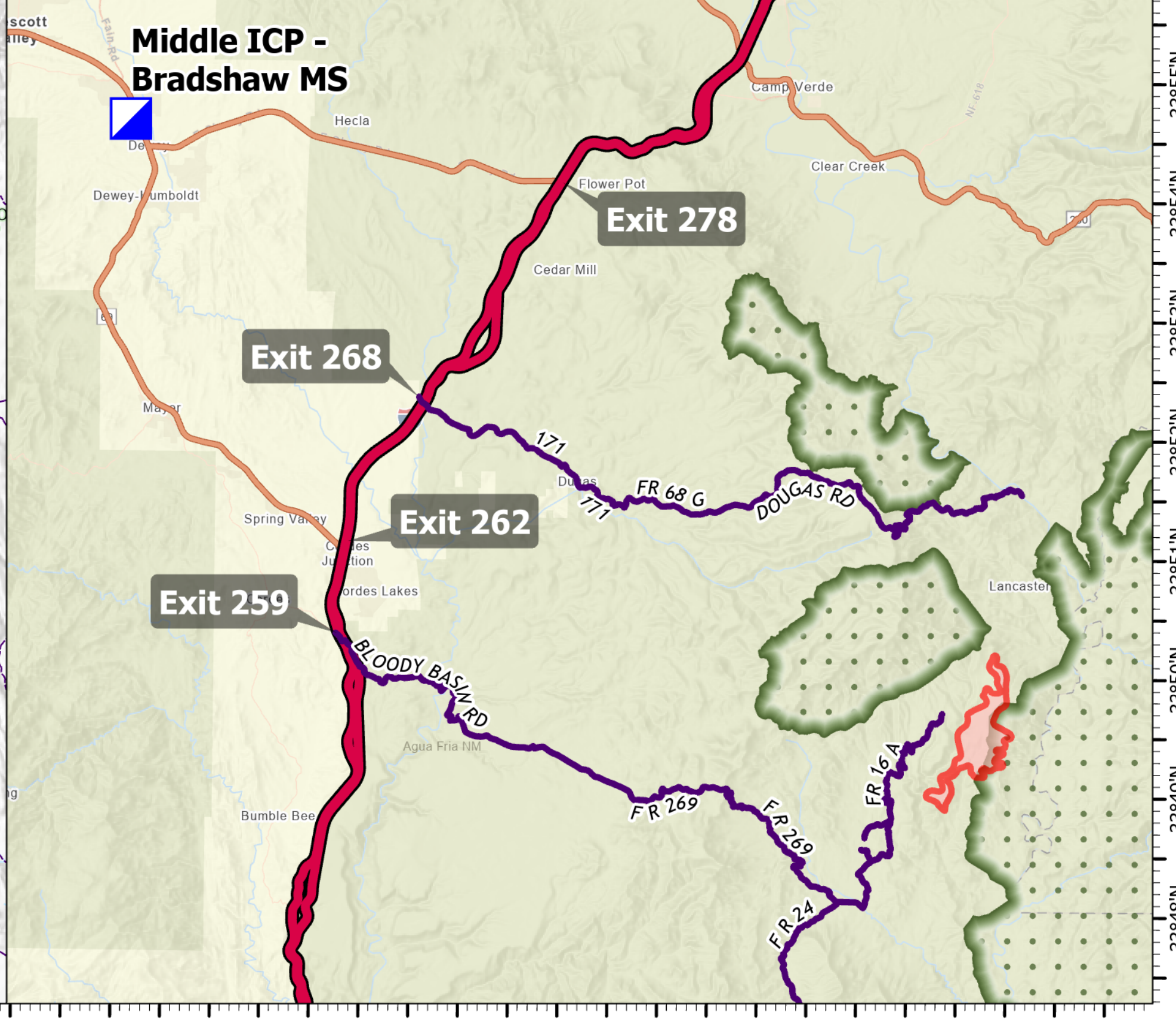


FC Point Type	Label	Comments	Latitude WGS84 DDM	Longitude WGS84 DDM
Check Point	UTV access only		34° 21.737' N	111° 51.631' W
Check Point	UTV Access Only recommended		34° 21.524' N	111° 52.054' W
Drop Point	10	Orme/Douglas Exit	34° 24.103' N	112° 04.281' W
Drop Point	50	Division delta access road	34° 16.990' N	112° 07.121' W
Drop Point	75		34° 12.692' N	111° 54.807' W
Drop Point	15		34° 21.410' N	111° 56.998' W
Drop Point	16		34° 21.116' N	111° 55.180' W
Fire Origin	Long Fire 7/11/2021		34° 14.808' N	111° 43.195' W
Helispot	1	Approved for Type 3	34° 14.227' N	111° 46.219' W
Helispot	3	Approved for Type 3	34° 04.800' N	111° 42.451' W
Helispot	2	Approved for Type 3	34° 06.763' N	111° 46.411' W
Helispot	4		34° 12.686' N	111° 54.943' W
Internet Access	Cell On Wheels	needs diesel fuel every other day	34° 12.714' N	111° 53.386' W
Mobile Weather Unit	664 Rd RAW5		34° 14.760' N	111° 46.247' W
Repeater	CMD 7	Pine Mountain	34° 18.770' N	111° 47.216' W
Staging Area		Game & Fish property	34° 15.536' N	112° 03.514' W
Value at Risk	Corral	Aerial Recon	34° 12.364' N	111° 53.937' W
Value at Risk	51 Ranch	Aerial Recon	34° 05.245' N	111° 51.073' W
Value at Risk	Repeater	Aerial Recon	34° 20.455' N	111° 47.461' W
Value at Risk	Childs Cabin	Browns Ranch	34° 21.622' N	111° 42.814' W
Value at Risk	Child's Power Plant	Child's Power Plant	34° 20.957' N	111° 41.897' W
Value at Risk	Childs Cabin	Browns Ranch	34° 21.622' N	111° 42.814' W
Value at Risk	Red Creek Ranch	Browns Ranch	34° 10.735' N	111° 47.474' W
Value at Risk	Horner Mtn. Ranch		34° 21.232' N	111° 56.403' W
Value at Risk	Structures		34° 21.107' N	111° 57.451' W
Value at Risk	MT Ranch		34° 09.343' N	111° 45.208' W
Value at Risk	LX Sprng	picnic spring enclosure	34° 10.064' N	111° 50.084' W
Value at Risk	picnic sprng	enclosure is badly damaged	34° 09.699' N	111° 49.949' W
Value at Risk	Tangle CK FS Admin Site	FS admin site	34° 08.970' N	111° 48.124' W
Value at Risk	Red CK shipping corrals	range infrastructure	34° 09.400' N	111° 48.336' W
Value at Risk	wooden corral	range infrastructure	34° 14.205' N	111° 46.197' W
Value at Risk	Horse Camp Cabin	horse camp cabin	34° 15.664' N	111° 45.359' W



TRANSPORTATION

Middle
AZ-TNF-1699
7/11/2021

2,688 acres at 7/10/2021 15:00

1:70,000 - SWIMT 4 - 7/10/2021 2128
Acres from IR and GPS
North American 1983 Datum. LatLong Grid

- Check Point
- Helispot
- ⌘ Division Break
- Drop Point
- Ⓢ Staging Area
- ⊗ Fire Origin
- Value at Risk
- Other
- Ⓜ Gate
- Ⓜ Mobile Weather Unit
- Ⓜ Internet Access
- Ⓜ Repeater
- Access or Improved Road
- Fire Edge
- Wildfire Daily Fire Perimeter
- Access Roads

Miles
0 2 4

Kilometers
0 2 4