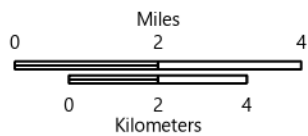


IAP

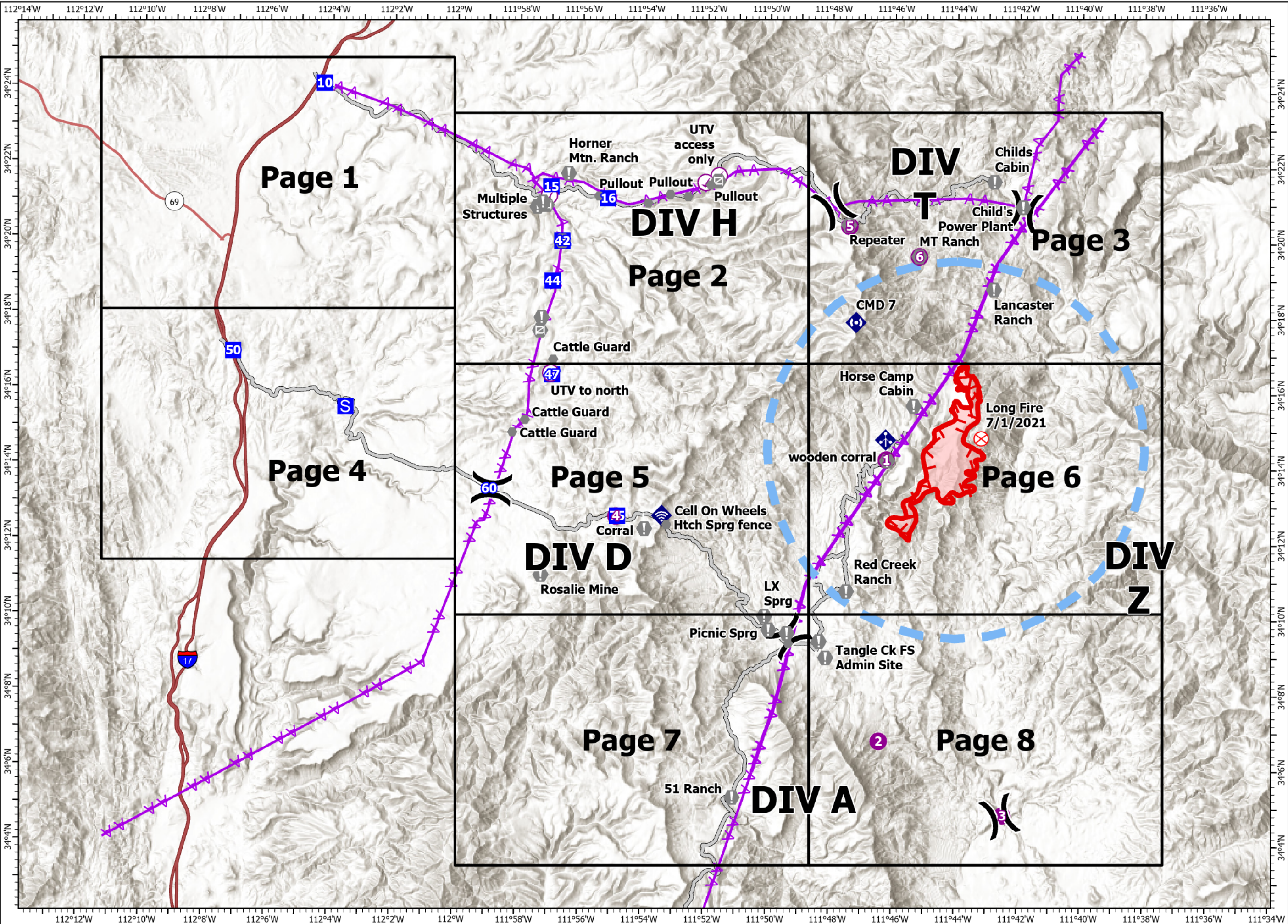
Middle
AZ-TNF-1699
7/12/2021

2,784 acres at 7/10/2021 19:30

- Check Point
- Helispot
-) Division Break
- Drop Point
- S Staging Area
- ⊗ Fire Origin
- ⊙ Value at Risk
- Other
- ⊙ Gate
- ◆ Mobile Weather Unit
- ◆ Internet Access
- ◆ Repeater
- Access or Improved Road
- ▲ Aerial Hazard
- Temporary Flight Restriction
- Fire Edge
- Wildfire Daily Fire Perimeter



1:170,000 - SWIMT 4 - 7/11/2021 2048
Acres from IR and GPS
North American 1983 Datum. Lat/Long Grid







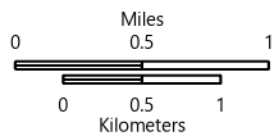
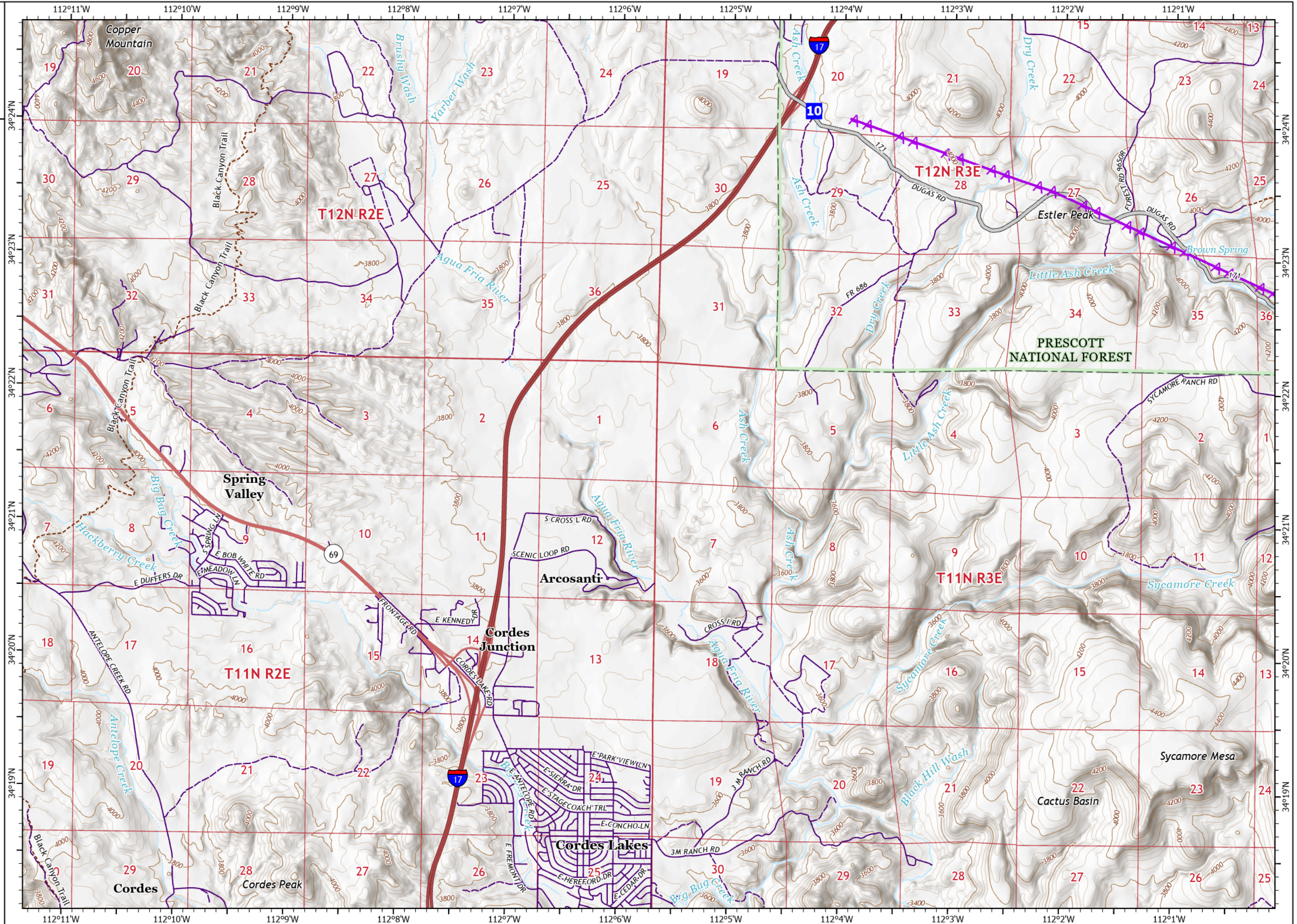
IAP

Middle
AZ-TNF-1699
7/12/2021

2,784 acres at 7/10/2021 19:30

Page 1

-  Drop Point
-  Access or Improved Road
-  Aerial Hazard
-  Access Roads



1:48,000 - SWIMT 4- 7/11/2021 2054
Acres from IR and GPS
North American 1983 Datum, Lat/Long Grid

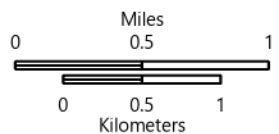
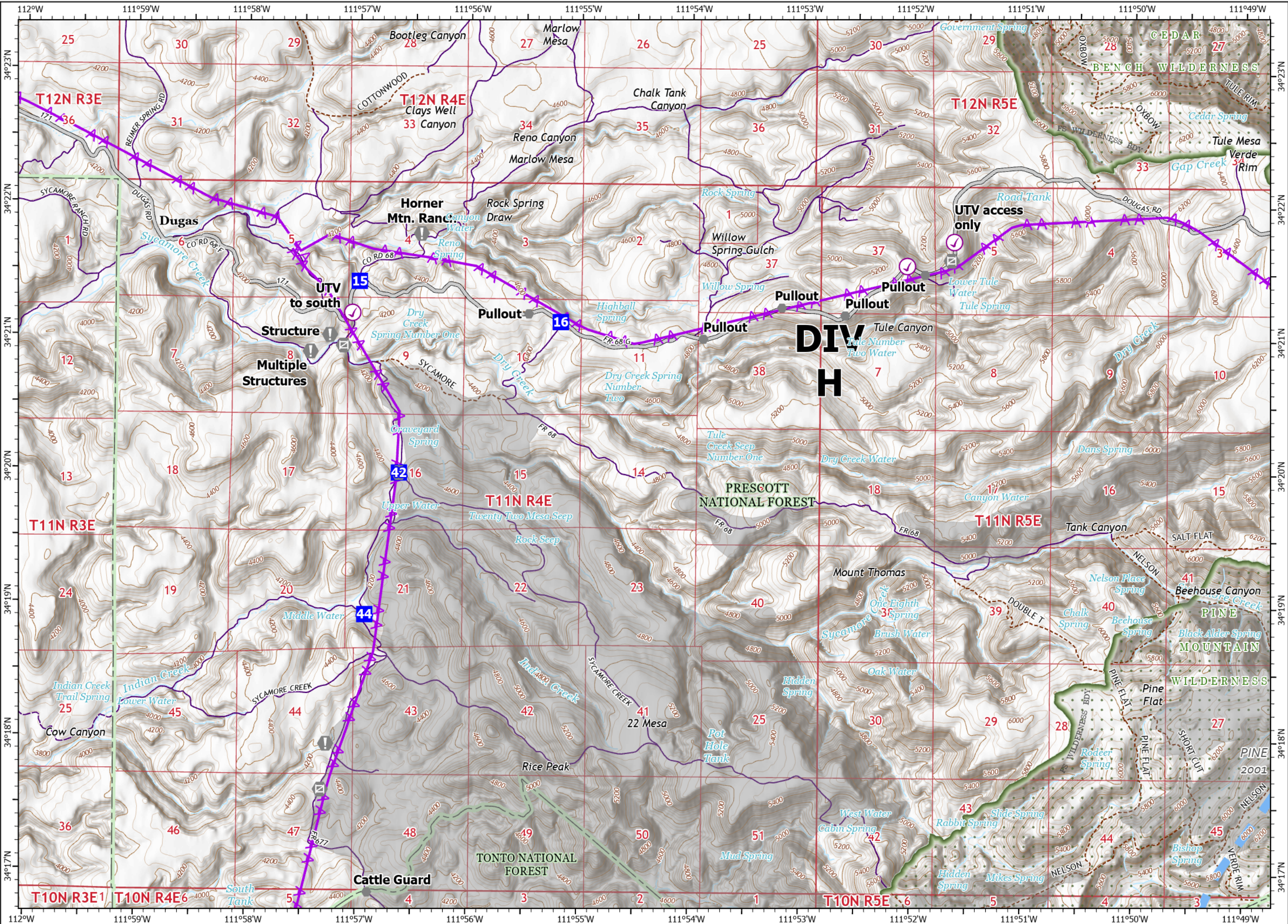
IAP

Middle
AZ-TNF-1699
7/12/2021

2,784 acres at 7/10/2021 19:30

Page 2

- ⊙ Check Point
- Drop Point
- ⊕ Value at Risk
- Other
- ⊠ Gate
- Access or Improved Road
- ⚡ Aerial Hazard
- Temporary Flight Restriction
- Access Roads



1:48,000 - SWIMT 4 - 7/11/2021 2054
Acres from IR and GPS
North American 1983 Datum. Lat/Long Grid

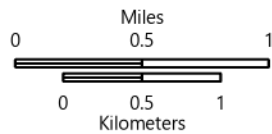
IAP

Middle
AZ-TNF-1699
7/12/2021

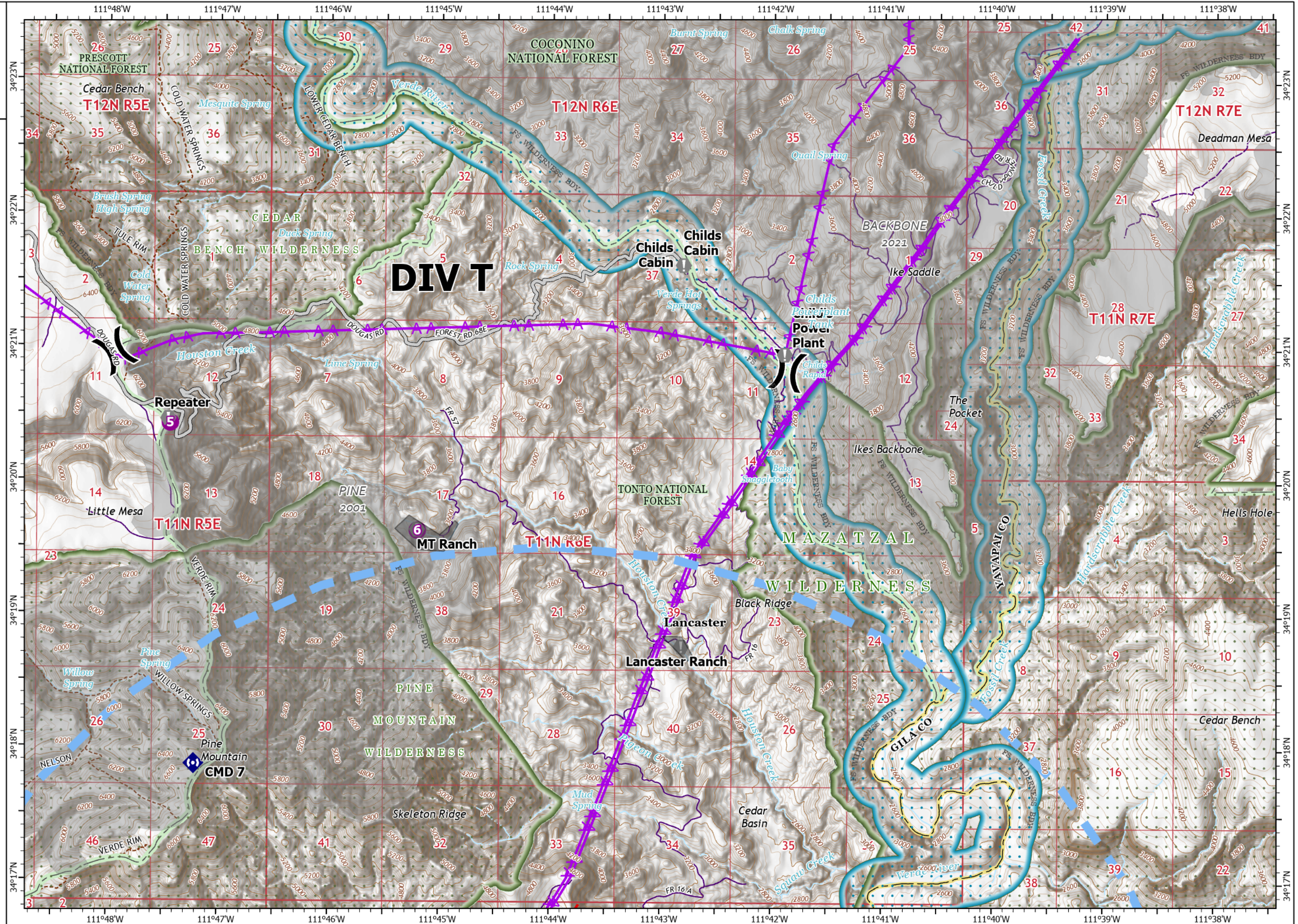
2,784 acres at 7/10/2021 19:30

Page 3

- Helispot
- ⌘ Division Break
- ⬇ Value at Risk
- ⬆ Repeater
- Access or Improved Road
- ⚡ Aerial Hazard
- Temporary Flight Restriction
- Fire Edge
- Access Roads



1:48,000 - SWIMT 4 - 7/11/2021 2055
Acres from IR and GPS
North American 1983 Datum. Lat/Long Grid







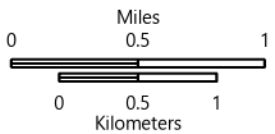
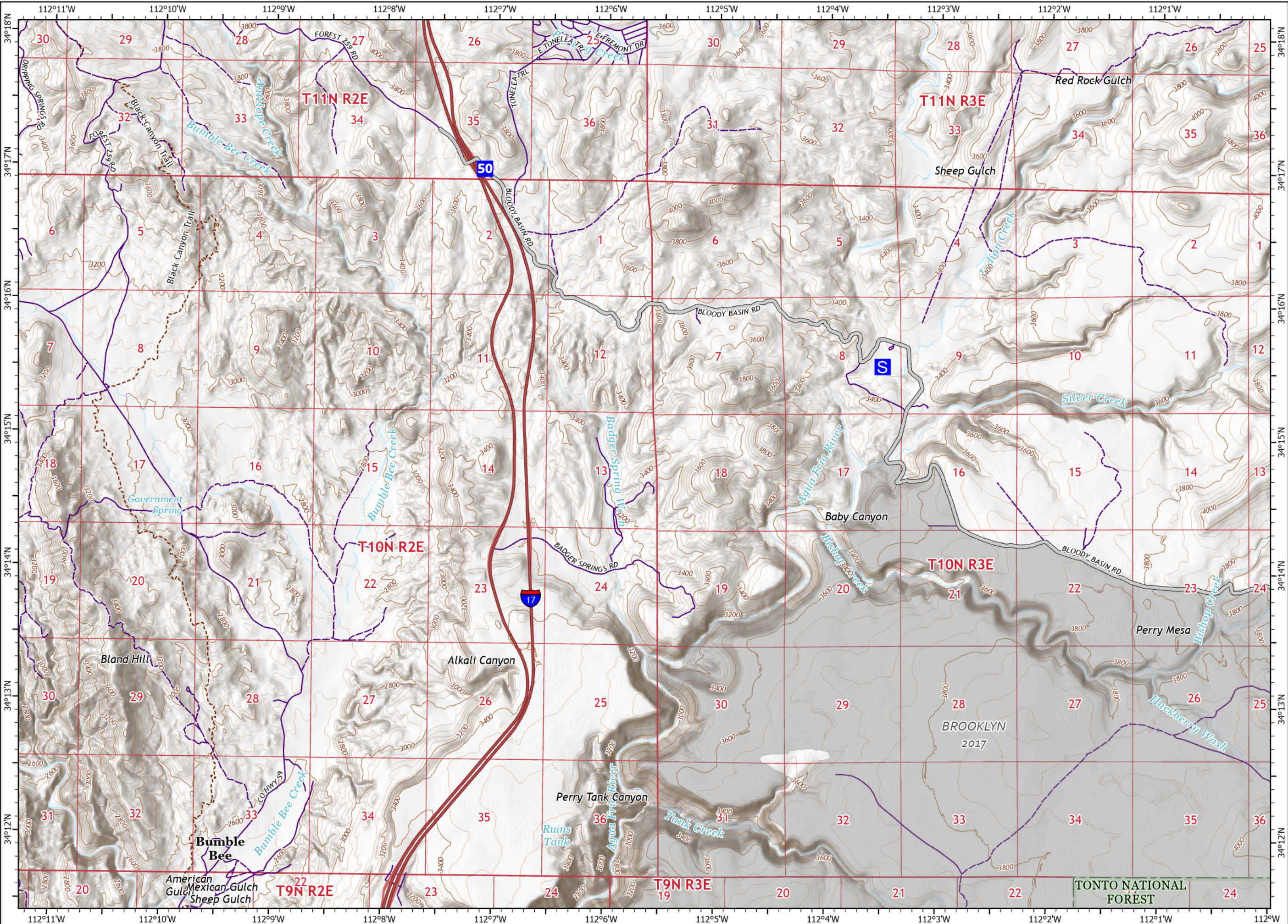
IAP

Middle
AZ-TNF-1699
7/12/2021

2,784 acres at 7/10/2021 19:30

Page 4

-  Drop Point
-  Staging Area
-  Access or Improved Road
-  Access Roads














1:48,000 - SWIMT 4- 7/11/2021 2055
Acres from IR and GPS
North American 1983 Datum. Lat/Long Grid

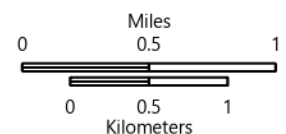
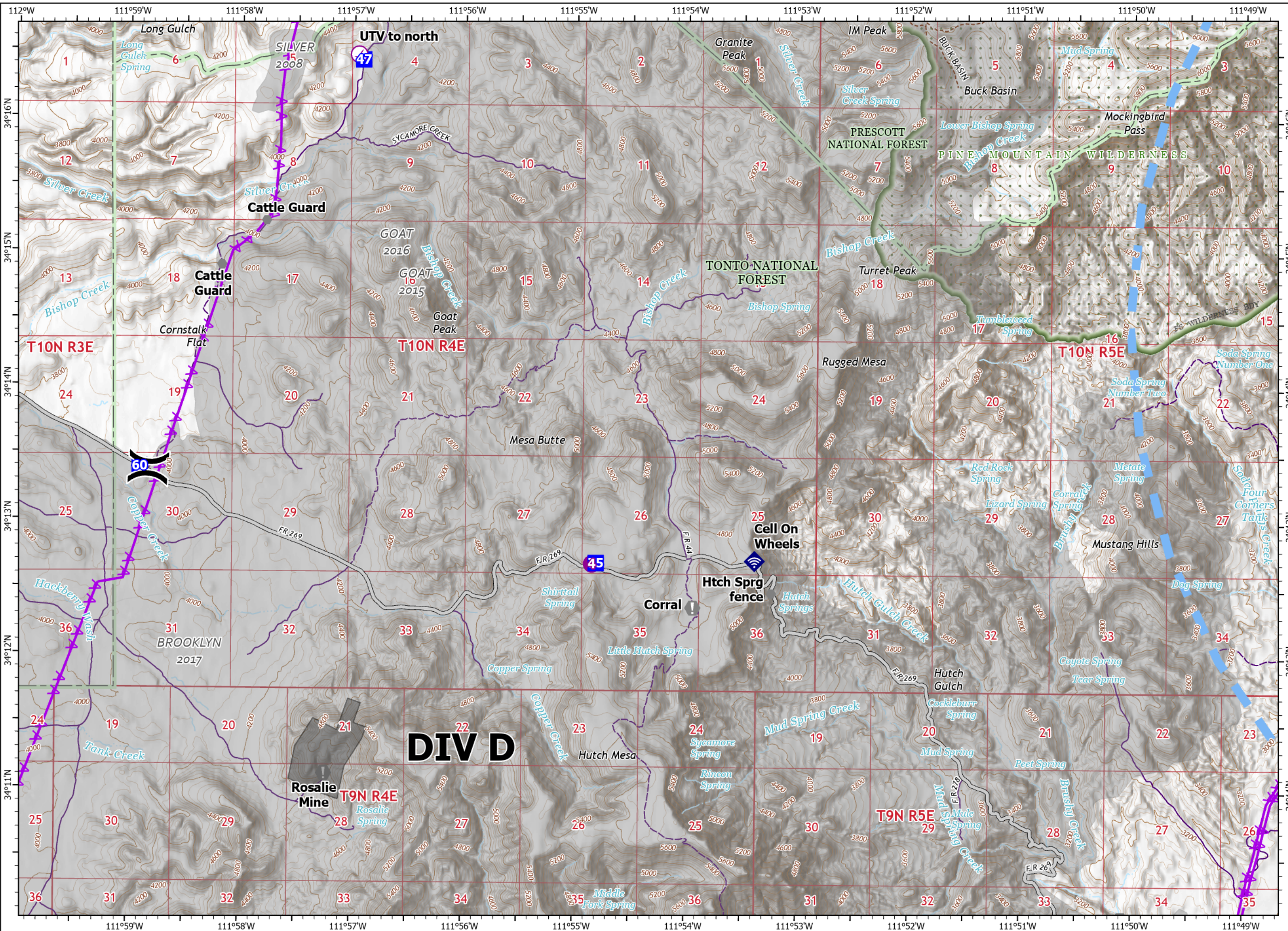
IAP

Middle
AZ-TNF-1699
7/12/2021

2,784 acres at 7/10/2021 19:30

Page 5

-  Check Point
-  Helispot
-  Division Break
-  Drop Point
-  Value at Risk
-  Other
-  Internet Access
-  Access or Improved Road
-  Aerial Hazard
-  Temporary Flight Restriction
-  Access Roads



1:48,000 - SWIMT 4 - 7/11/2021 2055
Acres from IR and GPS
North American 1983 Datum, Lat/Long Grid

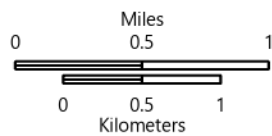
IAP

Middle
AZ-TNF-1699
7/12/2021

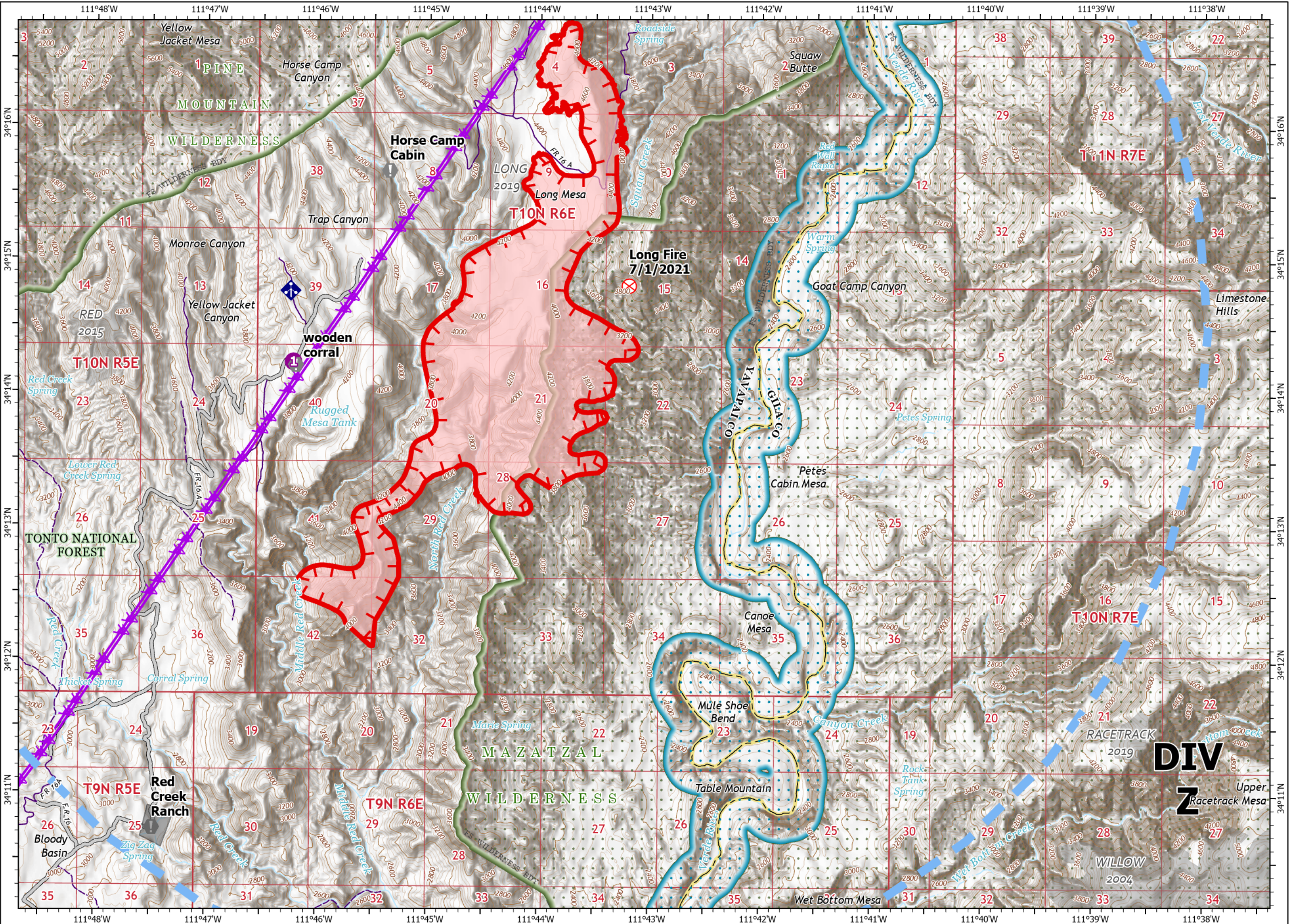
2,784 acres at 7/10/2021 19:30

Page 6

- Helispot
- ⊗ Fire Origin
- ⬇ Value at Risk
- ◆ Mobile Weather Unit
- Access or Improved Road
- ⚡ Aerial Hazard
- Temporary Flight Restriction
- Fire Edge
- Wildfire Daily Fire Perimeter
- Access Roads



1:48,000 - SWIMT 4 - 7/11/2021 2055
Acres from IR and GPS
North American 1983 Datum. Lat/Long Grid



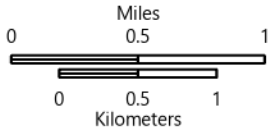
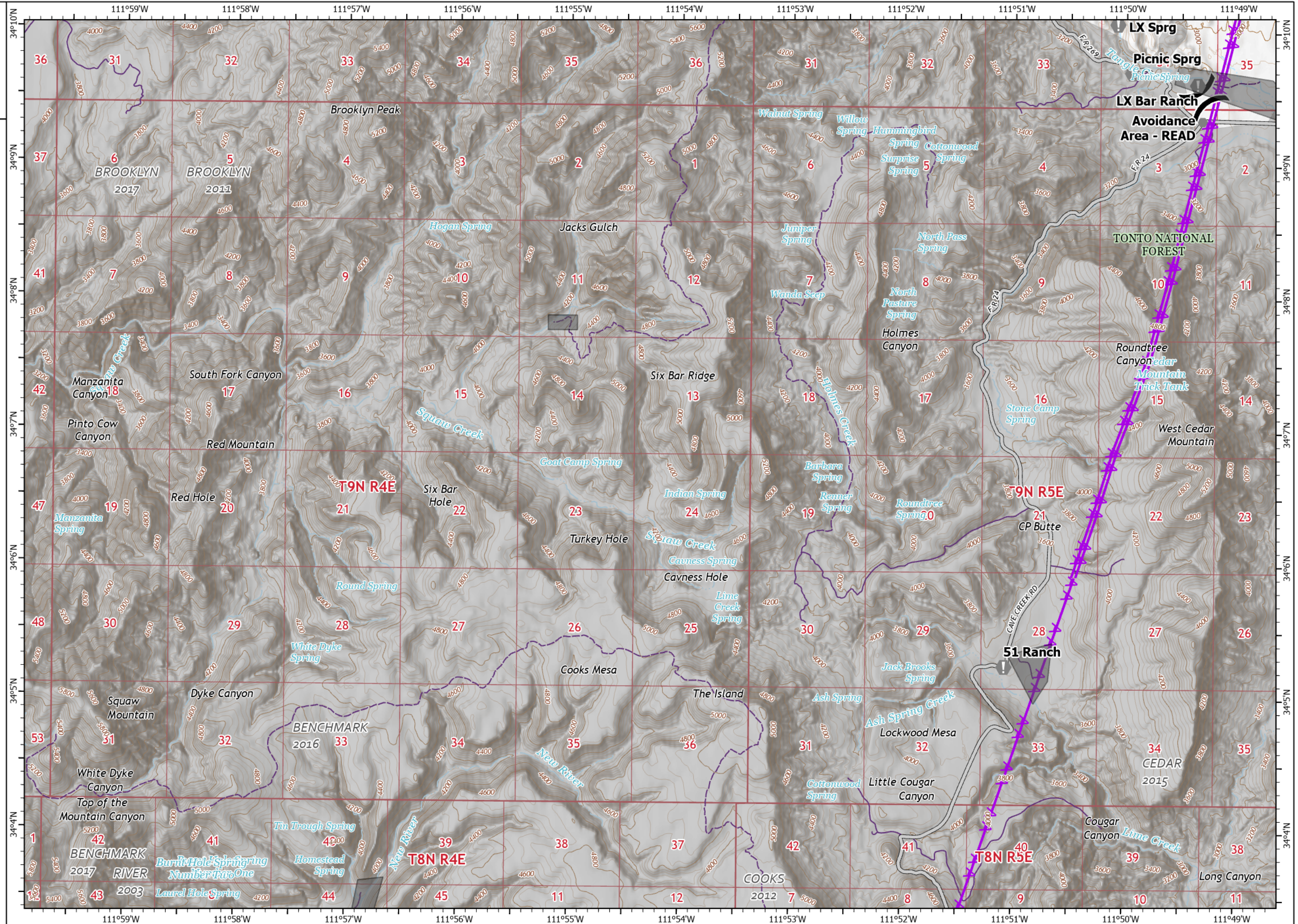
IAP

Middle
AZ-TNF-1699
7/12/2021

2,784 acres at 7/10/2021 19:30

Page 7

- (X) Division Break
- (I) Value at Risk
- (●) Other
- Access or Improved Road
- AA Aerial Hazard
- Access Roads



1:48,000 - SWIMT 4- 7/11/2021 2055
Acres from IR and GPS
North American 1983 Datum. Lat/Long Grid

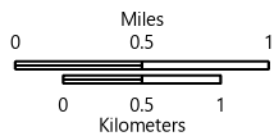
IAP

Middle
AZ-TNF-1699
7/12/2021

2,784 acres at 7/10/2021 19:30

Page 8

- Helispot
- ⌘ Division Break
- ⊙ Value at Risk
- Access or Improved Road
- Temporary Flight Restriction
- Access Roads



1:48,000 - SWIMT 4- 7/11/2021 2055
Acres from IR and GPS
North American 1983 Datum. Lat/Long Grid

