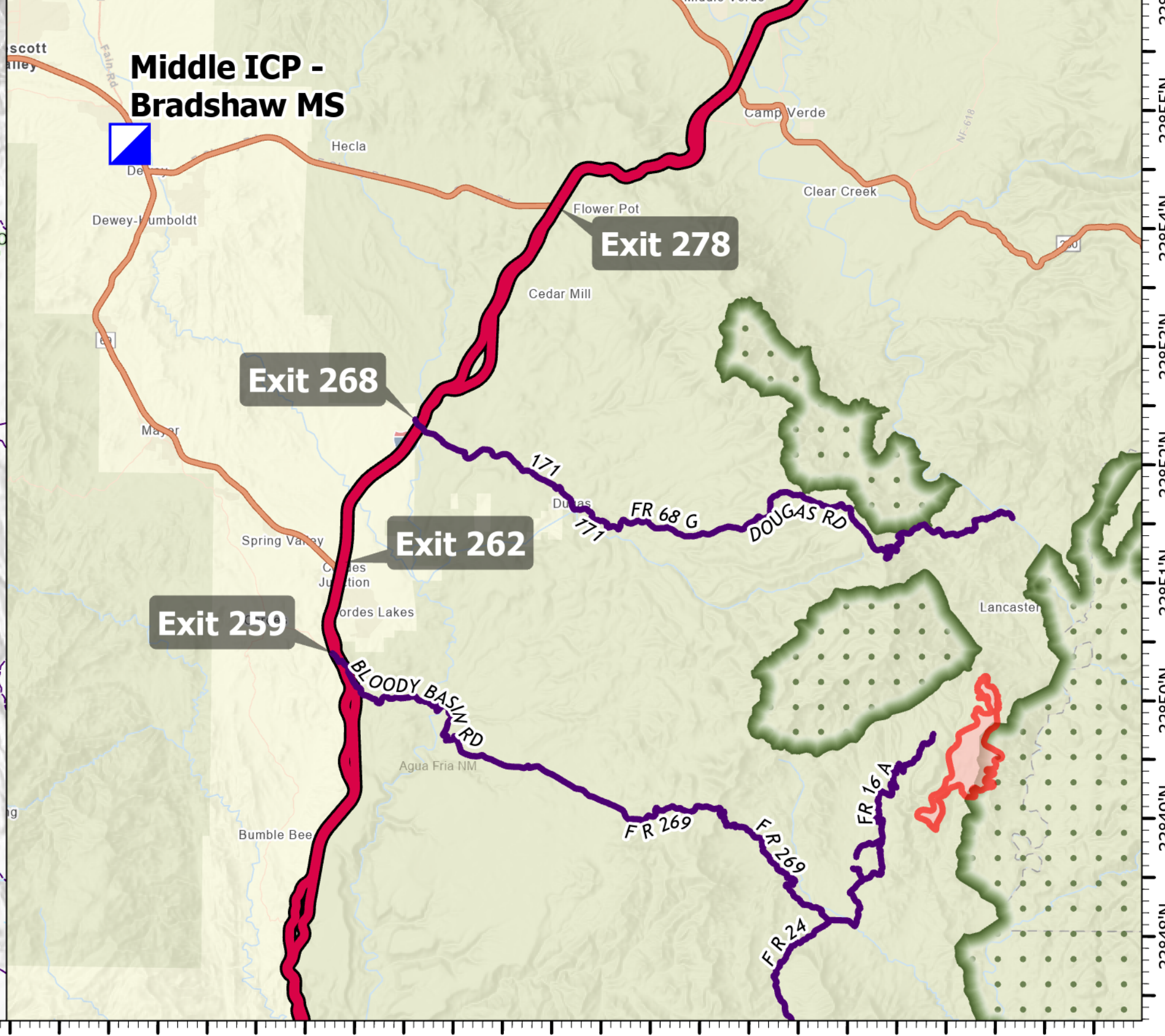


FC Point Type	Label	Comments	Latitude WGS84 DDM	Longitude WGS84 DDM
Check Point	UTV access only	UTV access only	34° 21.737' N	111° 51.631' W
Check Point	UTV to north	UTV Access Only recommended	34° 21.554' N	111° 52.054' W
Check Point	UTV to south		34° 16.466' N	111° 56.965' W
Drop Point	10	Orme/Douglas Exit	34° 21.774' N	111° 57.069' W
Drop Point	50	Division delta access road	34° 16.990' N	112° 07.121' W
Drop Point	75		34° 12.692' N	111° 54.807' W
Drop Point	15		34° 21.410' N	111° 56.998' W
Drop Point	16		34° 21.116' N	111° 55.180' W
Drop Point	60		34° 13.391' N	111° 58.902' W
Drop Point	47		34° 16.427' N	111° 56.923' W
Drop Point	44	brush out	34° 18.914' N	111° 56.931' W
Drop Point	42		34° 19.978' N	111° 56.630' W
Fire Origin	Long Fire 7/12/2021		34° 14.808' N	111° 43.195' W
Helispot	1	Approved for Type 3	34° 14.227' N	111° 46.219' W
Helispot	3	Approved for Type 3	34° 04.800' N	111° 42.451' W
Helispot	2	Approved for Type 3	34° 06.763' N	111° 46.411' W
Helispot	4		34° 12.686' N	111° 54.843' W
Helispot	5	Div T/H break	34° 20.422' N	111° 47.443' W
Helispot	6		34° 19.625' N	111° 45.205' W
Internet Access	Cell On Wheels	needs diesel fuel every other day	34° 12.714' N	111° 53.386' W
Mobile Weather Unit	664 Rd RAWs		34° 14.760' N	111° 46.247' W
Repeater	CMD 7	Pine Mountain	34° 17.870' N	111° 47.216' W
Staging Area	Corral	Game & Fish property	34° 15.336' N	112° 03.514' W
Value at Risk	Corral	Aerial Recon	34° 12.364' N	111° 53.937' W
Value at Risk	S1 Ranch	Aerial Recon	34° 05.245' N	111° 51.073' W
Value at Risk	Repeater	Aerial Recon	34° 20.455' N	111° 47.461' W
Value at Risk	Child's Cabin	Browns Ranch	34° 21.622' N	111° 42.814' W
Value at Risk	Child's Power Plant	Child's Power Plant	34° 20.957' N	111° 41.897' W
Value at Risk	Child's Cabin	Browns Ranch	34° 21.622' N	111° 42.814' W
Value at Risk	Red Creek Ranch		34° 10.735' N	111° 47.474' W
Value at Risk	Homer Mtn. Ranch		34° 21.732' N	111° 56.403' W
Value at Risk	Multiple Structures		34° 20.883' N	111° 57.437' W
Value at Risk	MT Ranch		34° 19.633' N	111° 45.208' W
Value at Risk	LX Sprg	Lx spring enclosure is badly damaged	34° 10.664' N	111° 50.084' W
Value at Risk	Picnic Sprg	picnic spring enclosure is badly damaged	34° 09.699' N	111° 49.949' W
Value at Risk	Tangle Ck FS Admin Site	FS admin site	34° 09.870' N	111° 48.124' W
Value at Risk	Red Ck shipping corrals	range infrastructure	34° 09.400' N	111° 48.336' W
Value at Risk	wooden corral	range infrastructure. fire sensitive	34° 14.205' N	111° 46.197' W
Value at Risk	Horse Camp Cabin	horse camp cabin	34° 15.664' N	111° 45.359' W
Value at Risk	Structure		34° 21.009' N	111° 57.263' W
Value at Risk	Rosalie Mine		34° 11.115' N	111° 57.233' W
Value at Risk	LX Bar Ranch		34° 09.612' N	111° 49.362' W
Value at Risk	Lancaster Ranch	Private Property	34° 18.764' N	111° 42.816' W



TRANSPORTATION

Middle
AZ-TNF-1699
7/12/2021
2,784 acres at 7/10/2021 19:30

1:70,000 - SWIMT 4 - 7/11/2021 2054
Acres from IR and GPS
North American 1983 Datum. LatLong Grid

- Check Point
- Helispot
- ⌘ Division Break
- Drop Point
- Staging Area
- ⊗ Fire Origin
- Value at Risk
- Other
- ⊕ Gate
- ⊕ Mobile Weather Unit
- ⊕ Internet Access
- ⊕ Repeater
- Access or Improved Road
- Fire Edge
- Wildfire Daily Fire Perimeter
- Access Roads

Miles
0 2 4

Kilometers
0 2 4