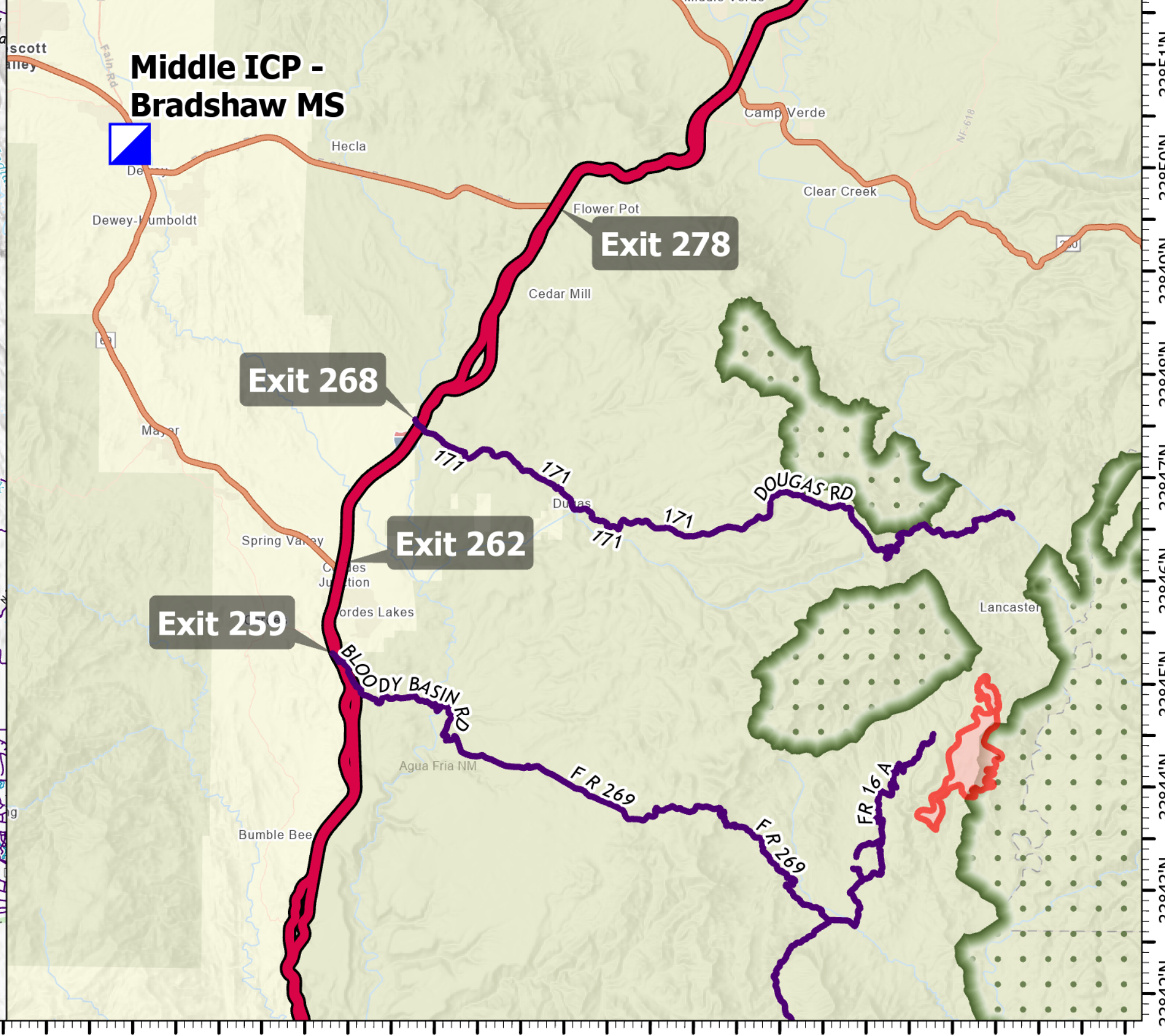


FC Point Type	Label	Comments	Latitude WGS84 DDM	Longitude WGS84 DDM
Check Point	UTV access only	UTV access	34° 21.737' N	111° 51.631' W
Check Point	UTV to north	UTV Access Only recommended	34° 21.556' N	111° 52.054' W
Check Point	UTV to south		34° 16.466' N	111° 56.965' W
Drop Point	10	Orme/Douglas Exit	34° 24.103' N	112° 04.281' W
Drop Point	50	Division delta access road	34° 16.990' N	112° 07.121' W
Drop Point	75		34° 12.692' N	111° 54.807' W
Drop Point	15		34° 21.410' N	111° 56.998' W
Drop Point	16		34° 21.116' N	111° 55.180' W
Drop Point	60		34° 13.391' N	111° 58.902' W
Drop Point	47		34° 16.427' N	111° 56.822' W
Drop Point	44	brush out	34° 18.914' N	111° 56.831' W
Drop Point	42		34° 19.978' N	111° 56.630' W
Fire Origin	Long Fire 7/1/2021		34° 14.808' N	111° 43.195' W
Fire Origin	Middle	6/29/2021 15:23	34° 12.599' N	111° 45.493' W
Helispot	1	Approved for Type 3	34° 14.227' N	111° 46.219' W
Helispot	3	Approved for Type 3	34° 04.800' N	111° 42.451' W
Helispot	2	Approved for Type 3	34° 06.763' N	111° 46.411' W
Helispot	6		34° 12.686' N	111° 54.843' W
Helispot	2	Div T/H break	34° 20.428' N	111° 47.446' W
Helispot	5		34° 19.625' N	111° 45.205' W
Helispot	7		34° 16.074' N	111° 44.243' W
Helispot	9		34° 15.611' N	111° 43.487' W
Helispot	8		34° 16.153' N	111° 43.818' W
Internet Access	Cell On Wheels	needs diesel fuel every other day	34° 12.714' N	111° 53.386' W
Mobile Weather Unit	664 rd RAVES		34° 14.769' N	111° 46.247' W
Repeater	Pine Mountain		34° 17.870' N	111° 47.216' W
Staging Area	CMD 7	Game & Fish property	34° 15.536' N	112° 03.514' W
Value at Risk	Corral	Aerial Recon	34° 12.364' N	111° 53.937' W
Value at Risk	51 Ranch	Aerial Recon	34° 05.245' N	111° 51.073' W
Value at Risk	Repeater	Aerial Recon	34° 20.455' N	111° 47.461' W
Value at Risk	Childs Cabin	Childs Cabin	34° 21.622' N	111° 42.814' W
Value at Risk	Childs Power Plant	Childs Power Plant	34° 20.957' N	111° 41.897' W
Value at Risk	Childs Cabin	Browns Ranch	34° 21.622' N	111° 42.814' W
Value at Risk	Red Creek Ranch	Browns Ranch	34° 10.735' N	111° 47.474' W
Value at Risk	Homers Mtn. Ranch		34° 21.732' N	111° 56.403' W
Value at Risk	Multiple Structures		34° 20.883' N	111° 57.437' W
Value at Risk	MT Ranch		34° 19.633' N	111° 45.208' W
Value at Risk	LX Sprng	Lx spring enclosure	34° 10.064' N	111° 50.084' W
Value at Risk	Picnic Sprng	picnic spring, enclosure is badly damaged	34° 09.699' N	111° 49.949' W
Value at Risk	Tangle Ck FS Admin Site	FS admin site	34° 09.240' N	111° 48.124' W
Value at Risk	Red Ck shipping corral	range infrastructure, fire sensitive	34° 09.400' N	111° 48.236' W
Value at Risk	wooden corral	range infrastructure, fire sensitive	34° 14.205' N	111° 46.197' W
Value at Risk	Horse Camp Cabin	horse camp cabin	34° 15.664' N	111° 45.359' W
Value at Risk	Structure		34° 21.009' N	111° 57.263' W
Value at Risk	Structure		34° 17.945' N	111° 57.273' W
Value at Risk	Rosalie Mine		34° 11.115' N	111° 57.233' W
Value at Risk	LX Bar Ranch		34° 09.612' N	111° 49.362' W
Value at Risk	mud springs cabin	mud springs cabin	34° 10.654' N	111° 51.481' W
Value at Risk	Lancaster Ranch	Private Property	34° 18.764' N	111° 42.818' W



**TRANSPORTATION**

Middle  
AZ-TNF-1699  
7/13/2021

2,792 acres at 7/11/2021 20:30

1:80,000 - SWIMT 4 - 7/12/2021 2131  
Acres from IR and GPS  
North American 1983 Datum. LatLong Grid

- Check Point
- Helispot
- ⌘ Division Break
- Drop Point
- Ⓢ Staging Area
- ⊗ Fire Origin
- ⊙ Value at Risk
- Other
- ⊕ Gate
- Ⓜ Mobile Weather Unit
- Ⓜ Internet Access
- Ⓜ Repeater
- Access or Improved Road
- Fire Edge
- Contained Line
- Wildfire Daily Fire Perimeter
- Access Road

Miles  
0 2 4

Kilometers  
0 2 4