

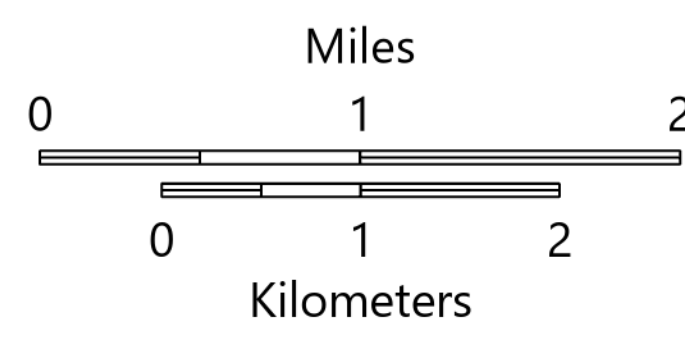
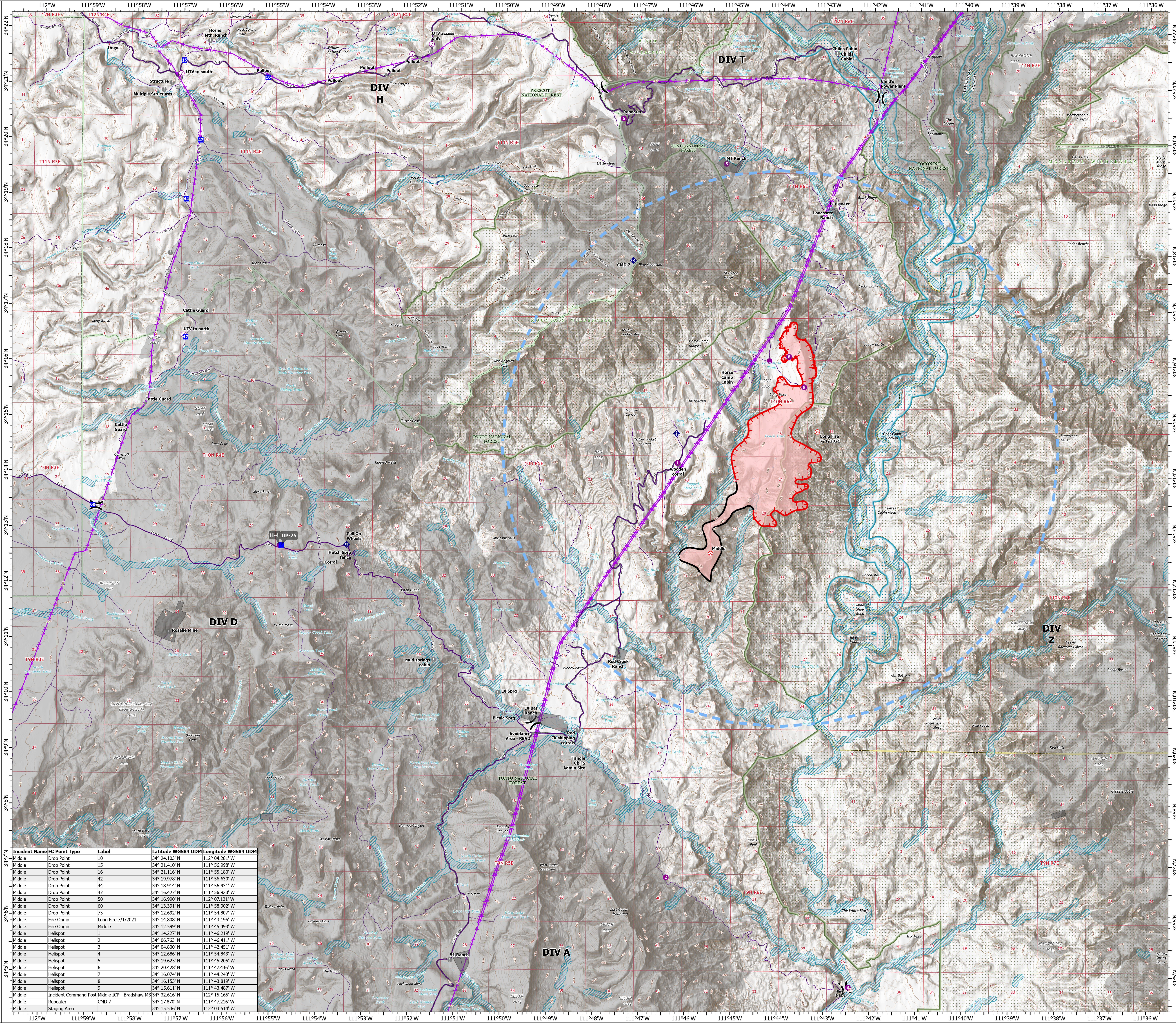
AIR OPS

Middle
AZ-TNF-1699

7/14/2021

2,792 acres at 7/12/2021 19:30

- Check Point
- Helispot
- Division Break
- Drop Point
- Fire Origin
- Value at Risk
- Other
- Gate
- Mobile Weather Unit
- Internet Access
- Repeater
- Access or Improved Road
- Aerial Hazard
- Temporary Flight Restriction
- Fire Edge
- Contained Line
- Wildfire Daily Fire Perimeter
- Retardant
- Avoidance Areas



Incident Name	FC Point Type	Label	Latitude WGS84 DDM	Longitude WGS84 DDM
Middle	Drop Point	10	34° 24.103' N	112° 04.281' W
Middle	Drop Point	15	34° 21.410' N	111° 56.998' W
Middle	Drop Point	16	34° 21.116' N	111° 55.180' W
Middle	Drop Point	42	34° 19.978' N	111° 56.630' W
Middle	Drop Point	44	34° 18.914' N	111° 56.931' W
Middle	Drop Point	47	34° 16.427' N	111° 56.923' W
Middle	Drop Point	50	34° 16.990' N	112° 07.121' W
Middle	Drop Point	60	34° 13.391' N	111° 58.902' W
Middle	Drop Point	75	34° 12.692' N	111° 54.807' W
Middle	Fire Origin	Long Fire 7/1/2021	34° 14.808' N	111° 43.195' W
Middle	Fire Origin	Middle	34° 12.599' N	111° 45.493' W
Middle	Helispot	1	34° 14.227' N	111° 46.219' W
Middle	Helispot	2	34° 06.263' N	111° 46.411' W
Middle	Helispot	3	34° 04.800' N	111° 42.451' W
Middle	Helispot	4	34° 12.686' N	111° 54.843' W
Middle	Helispot	5	34° 19.625' N	111° 45.205' W
Middle	Helispot	6	34° 20.428' N	111° 47.446' W
Middle	Helispot	7	34° 16.074' N	111° 44.243' W
Middle	Helispot	8	34° 16.153' N	111° 43.819' W
Middle	Helispot	9	34° 15.611' N	111° 43.467' W
Middle	Incident Command Post	Middle ICP - Bradshaw MS	34° 23.616' N	112° 15.165' W
Middle	Repeater	CMD 7	34° 17.870' N	111° 47.216' W
Middle	Staging Area		34° 15.536' N	112° 03.514' W

