

IAP

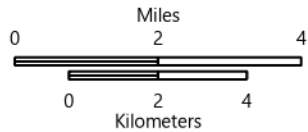
Middle

AZ-TNF-1699

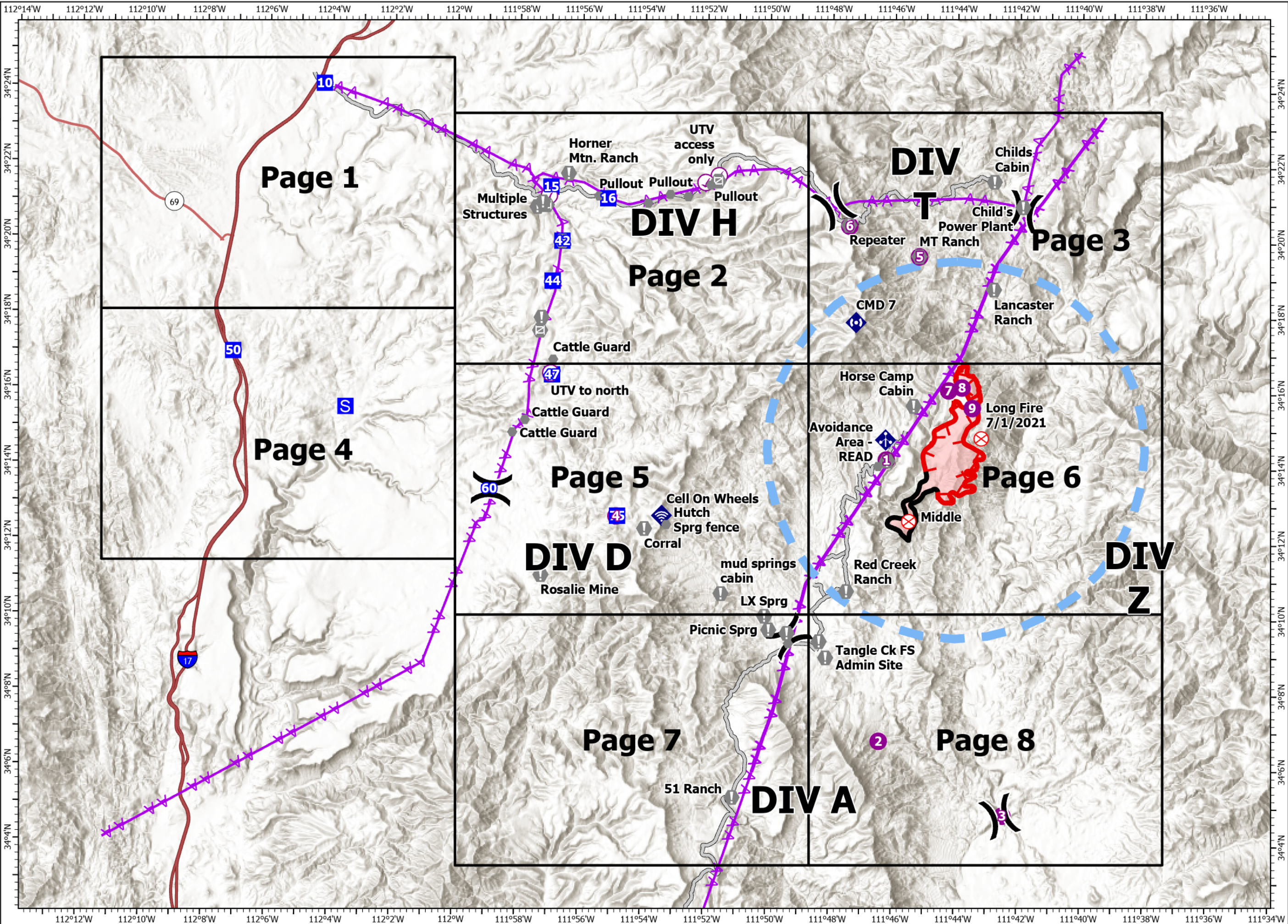
7/14/2021

2,792 acres at 7/12/2021 19:30

- Check Point
- Helispot
-) Division Break
- Drop Point
- S Staging Area
- ⊗ Fire Origin
- ⊙ Value at Risk
- Other
- ⊙ Gate
- ◆ Mobile Weather Unit
- ◆ Internet Access
- ◆ Repeater
- Access or Improved Road
- ▲ Aerial Hazard
- Temporary Flight Restriction
- Fire Edge
- Contained Line
- Wildfire Daily Fire Perimeter



1:170,000 - SWIMT 4 - 7/13/2021 2044
Acres from IR and GPS
North American 1983 Datum. Lat/Long Grid







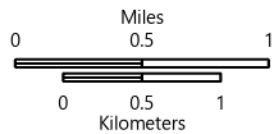
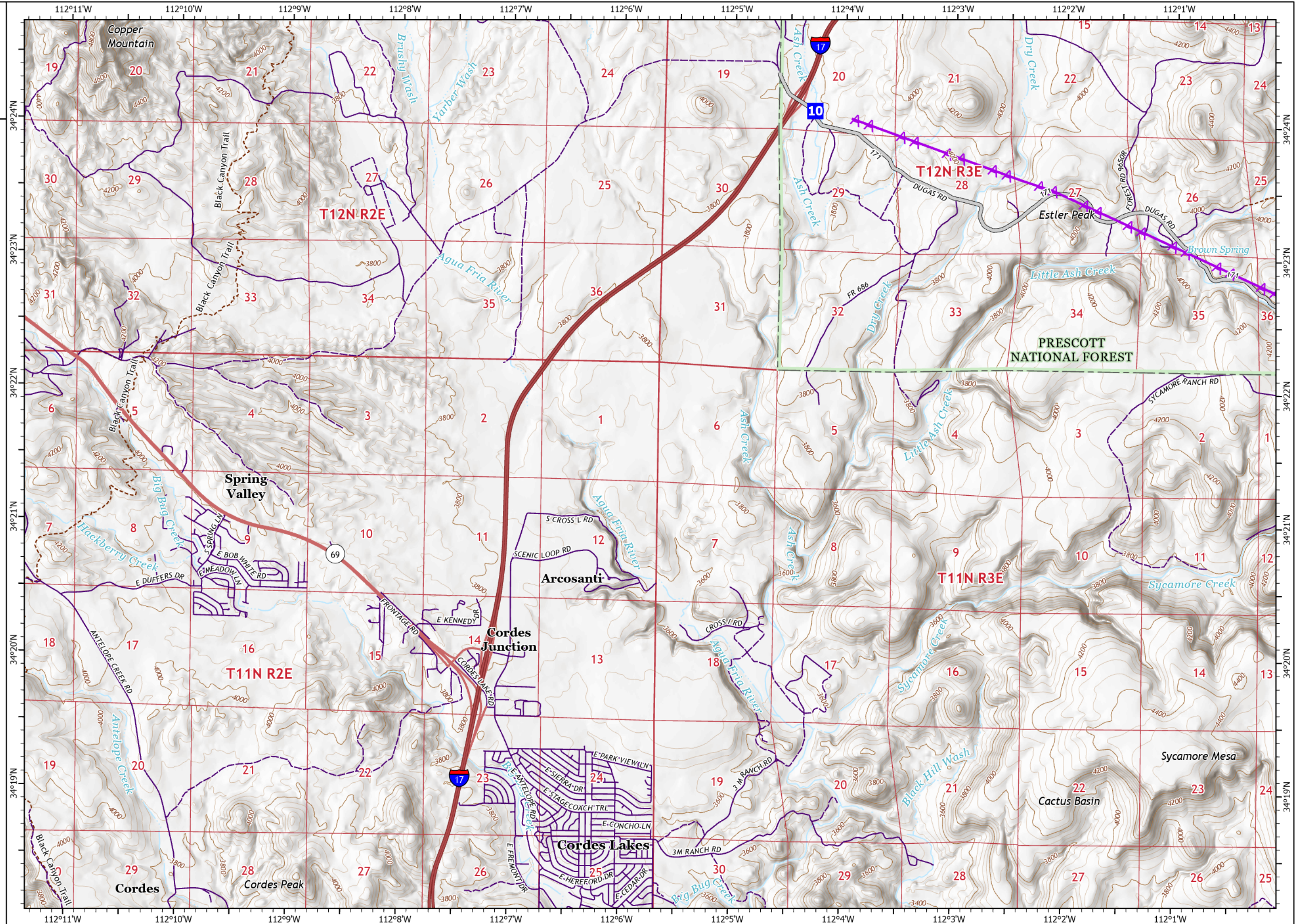
IAP

Middle
AZ-TNF-1699
7/14/2021

2,792 acres at 7/12/2021 19:30

Page 1

-  Drop Point
-  Access or Improved Road
-  Aerial Hazard
-  Access Roads












1:48,000 - SWIMT 4 - 7/13/2021 2051
Acres from IR and GPS
North American 1983 Datum, Lat/Long Grid


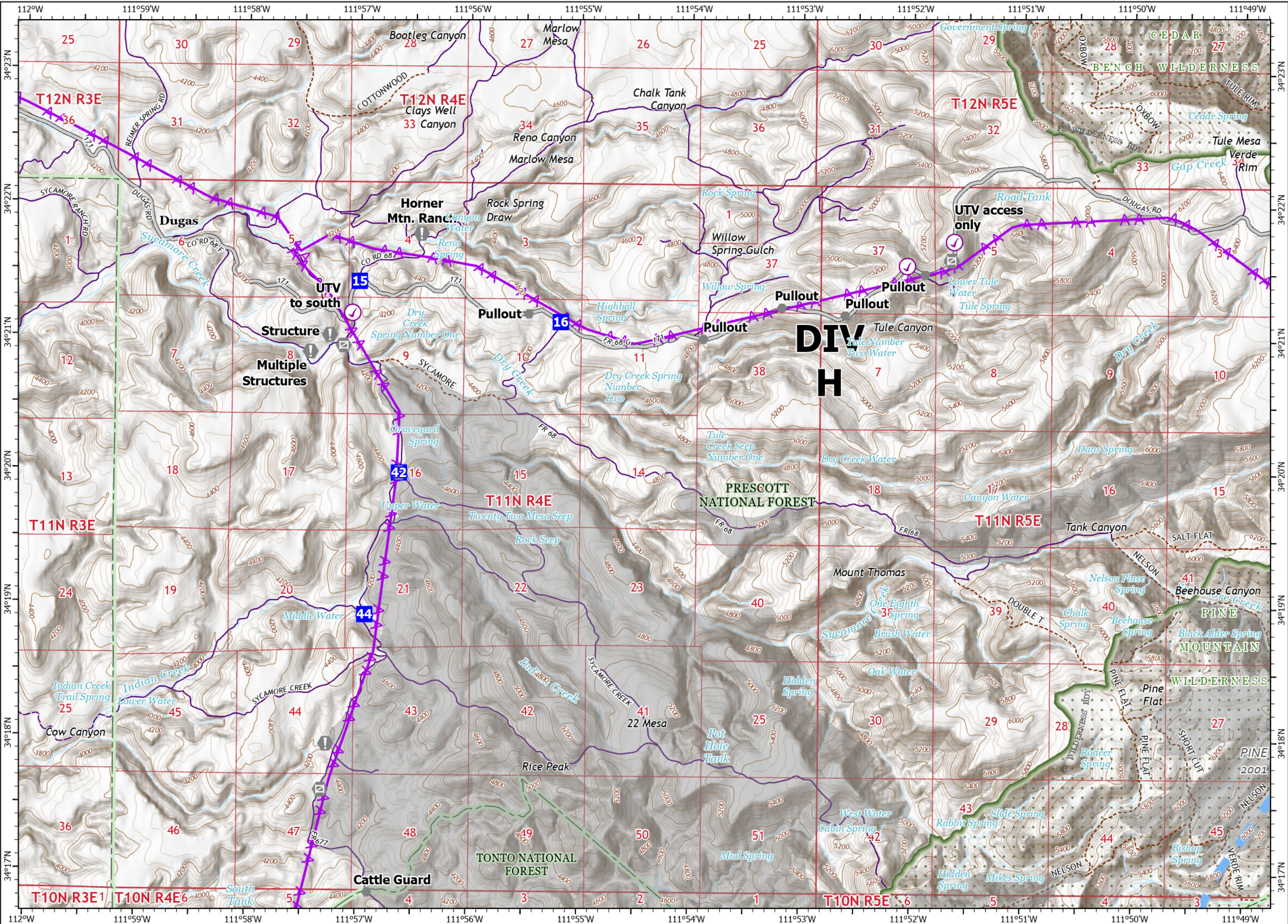
IAP

Middle
AZ-TNF-1699
7/14/2021

2,792 acres at 7/12/2021 19:30

Page 2

-  Check Point
-  Drop Point
-  Value at Risk
-  Other
-  Gate
-  Access or Improved Road
-  Aerial Hazard
-  Temporary Flight Restriction
-  Access Roads



0 0.5 1
Miles
0 0.5 1
Kilometers

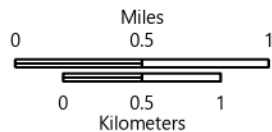
1:48,000 - SWIMT 4 - 7/13/2021 2051
Acres from IR and GPS
North American 1983 Datum. Lat/Long Grid

IAP

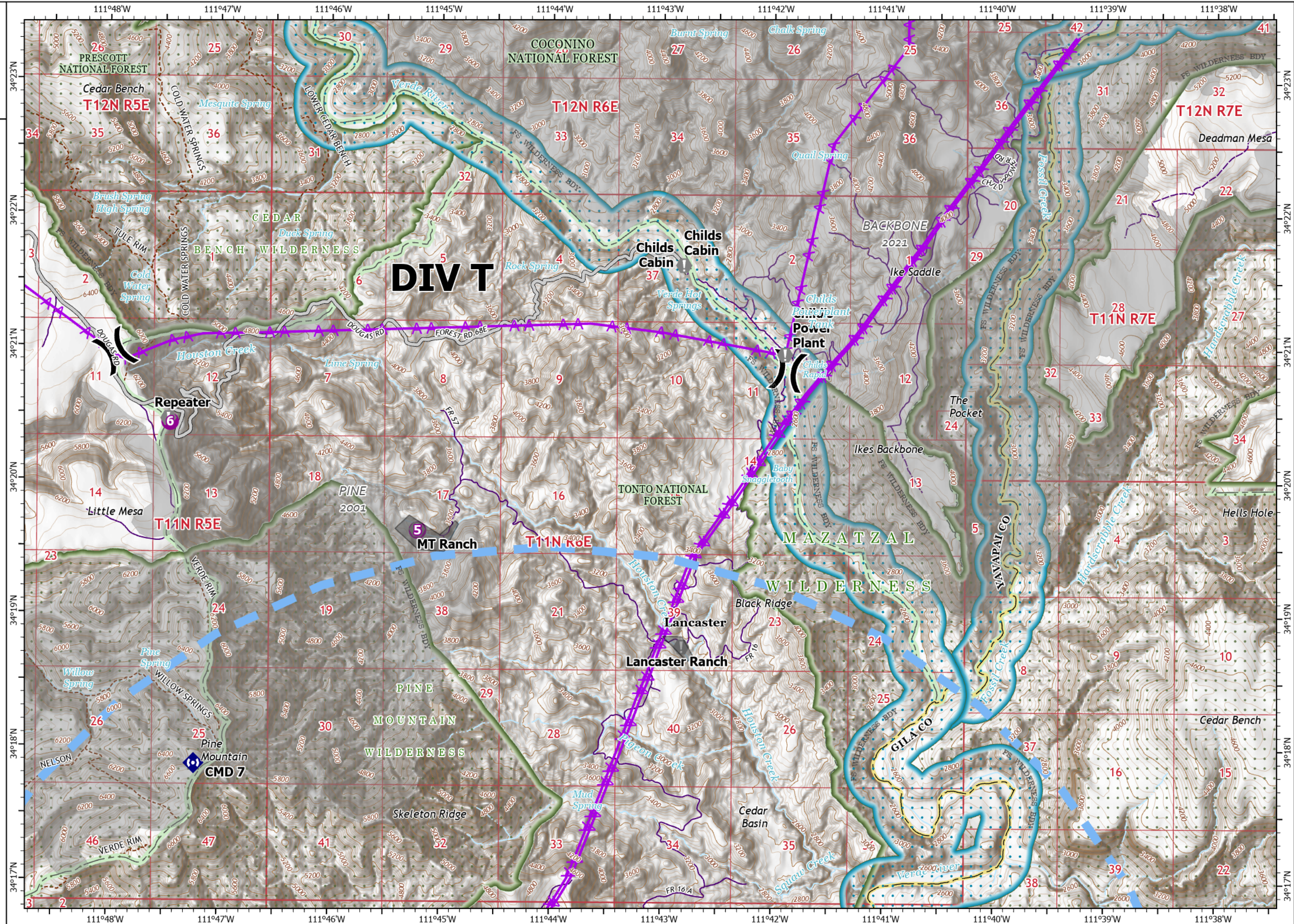
Middle
AZ-TNF-1699
7/14/2021
2,792 acres at 7/12/2021 19:30

Page 3

- Helispot
- ⌘ Division Break
- ⬇ Value at Risk
- ⬇ Repeater
- Access or Improved Road
- ⚡ Aerial Hazard
- Temporary Flight Restriction
- Fire Edge
- Access Roads



1:48,000 - SWIMT 4 - 7/13/2021 2052
Acres from IR and GPS
North American 1983 Datum. Lat/Long Grid






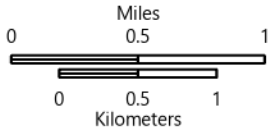
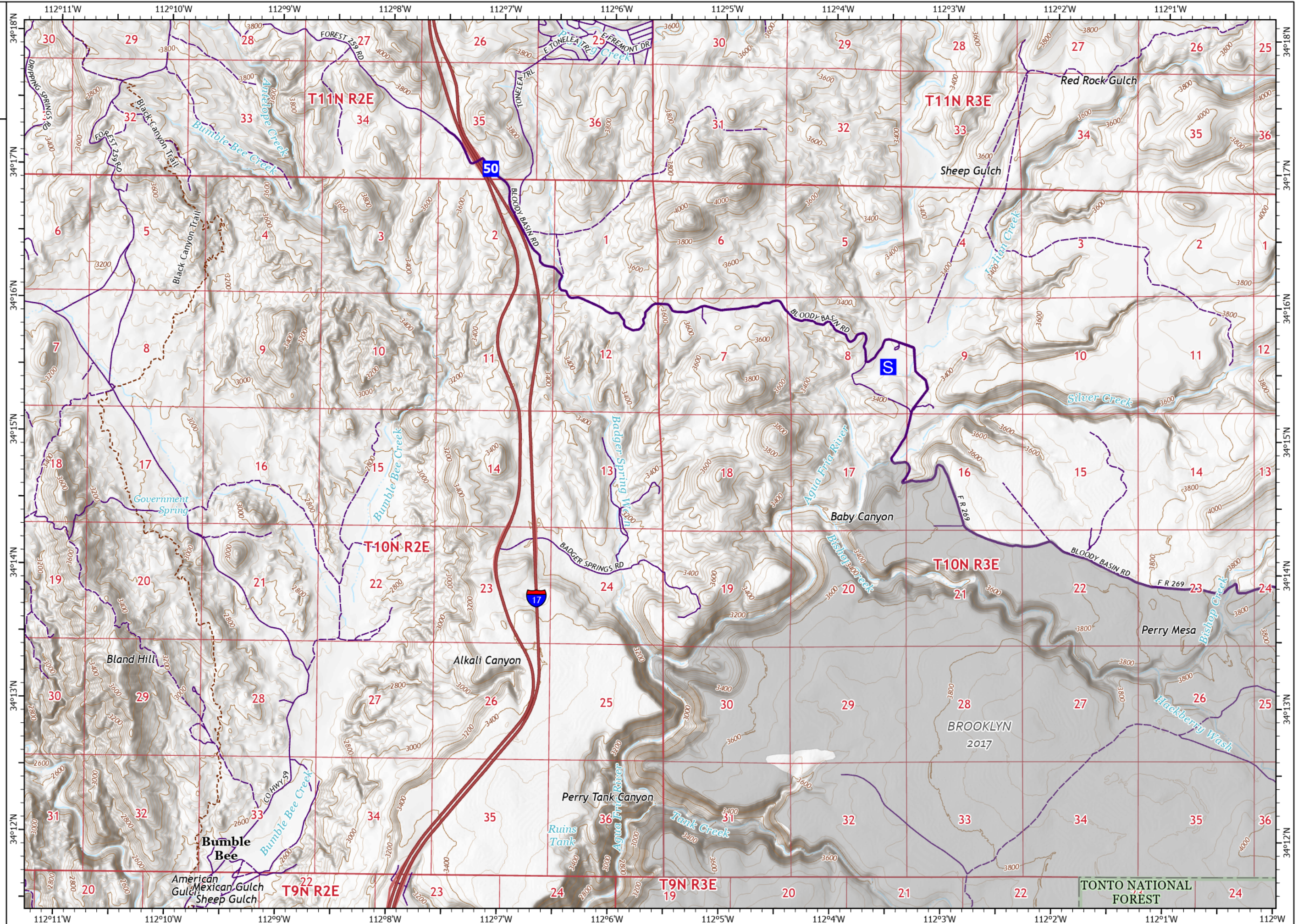
IAP

Middle
AZ-TNF-1699
7/14/2021

2,792 acres at 7/12/2021 19:30

Page 4

-  Drop Point
-  Staging Area
-  Access Roads



1:48,000 - SWIMT 4- 7/13/2021 2052
Acres from IR and GPS
North American 1983 Datum. Lat/Long Grid

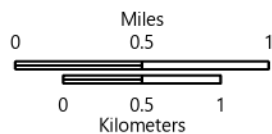
IAP

Middle
AZ-TNF-1699
7/14/2021

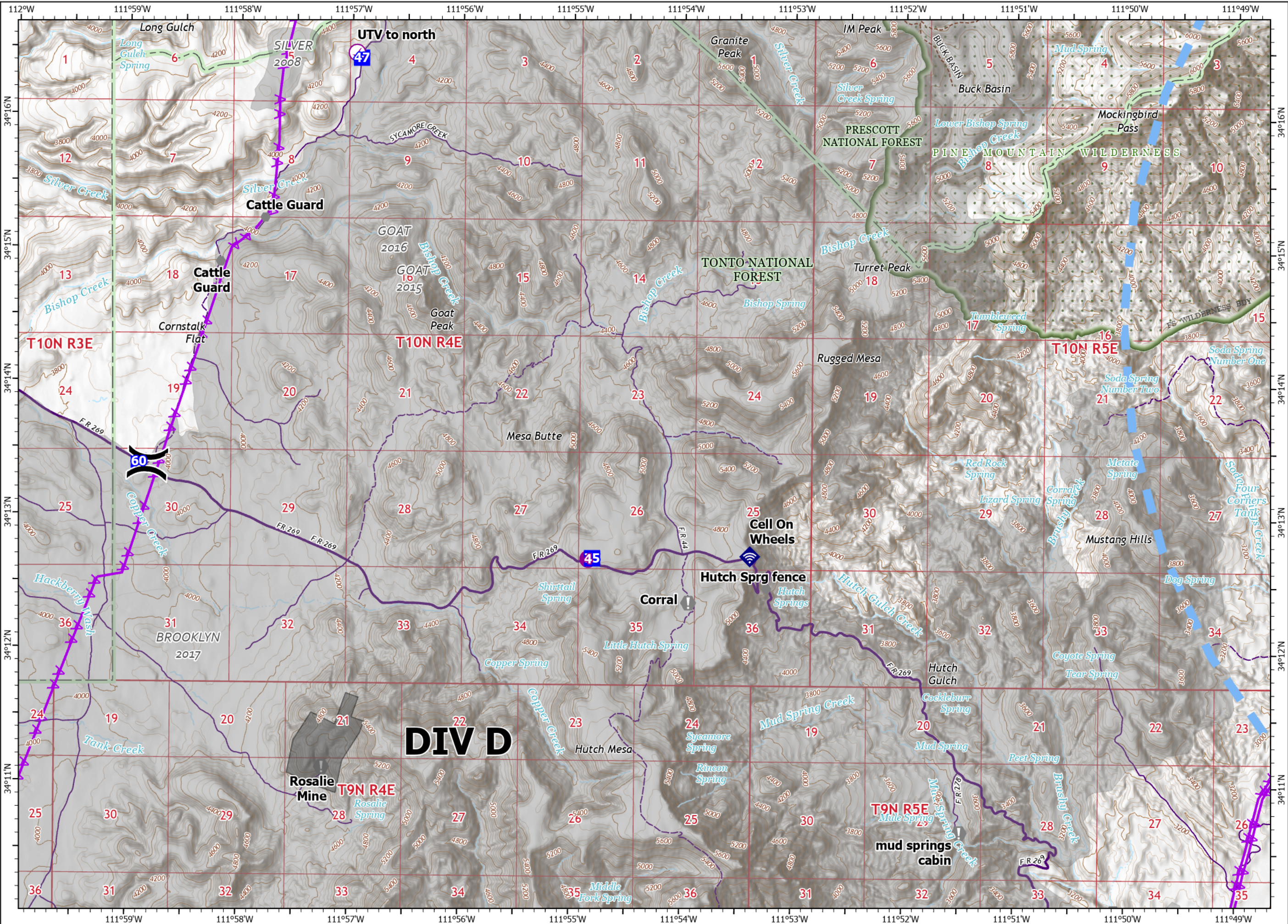
2,792 acres at 7/12/2021 19:30

Page 5

- Check Point
- Helispot
- ⌘ Division Break
- Drop Point
- ⚠ Value at Risk
- Other
- ◆ Internet Access
- Access or Improved Road
- ⚡ Aerial Hazard
- Temporary Flight Restriction
- Access Roads



1:48,000 - SWIMT 4 - 7/13/2021 2052
Acres from IR and GPS
North American 1983 Datum. Lat/Long Grid



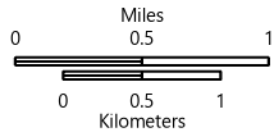
IAP

Middle
AZ-TNF-1699
7/14/2021

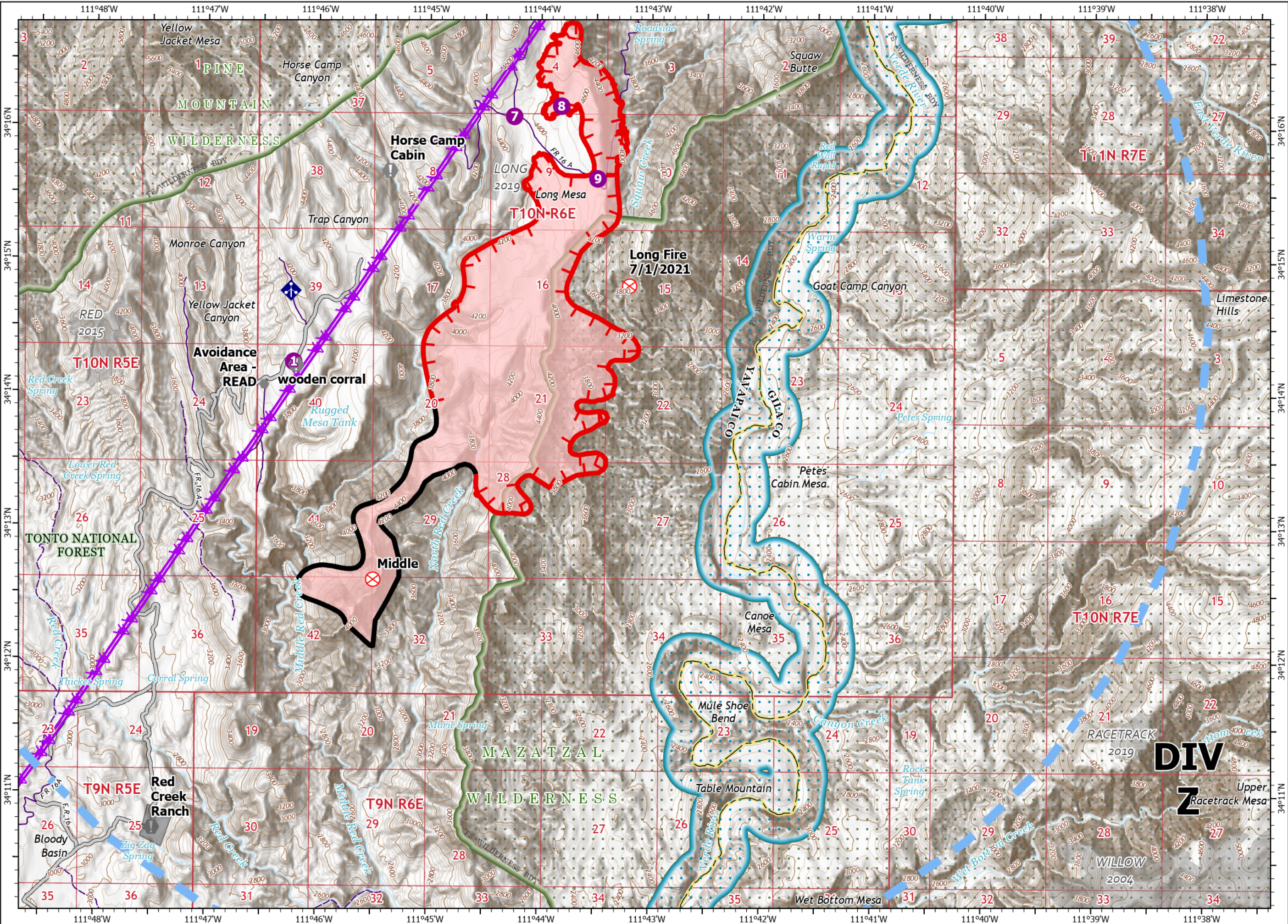
2,792 acres at 7/12/2021 19:30

Page 6

- Helispot
- ⊗ Fire Origin
- ⊙ Value at Risk
- Other
- ◆ Mobile Weather Unit
- Access or Improved Road
- ⚡ Aerial Hazard
- Temporary Flight Restriction
- Fire Edge
- Contained Line
- Wildfire Daily Fire Perimeter
- Access Roads



1:48,000 - SWIMT 4 - 7/13/2021 2052
Acres from IR and GPS
North American 1983 Datum. Lat/Long Grid



DIV
Z

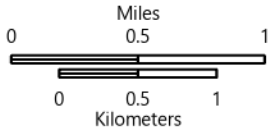
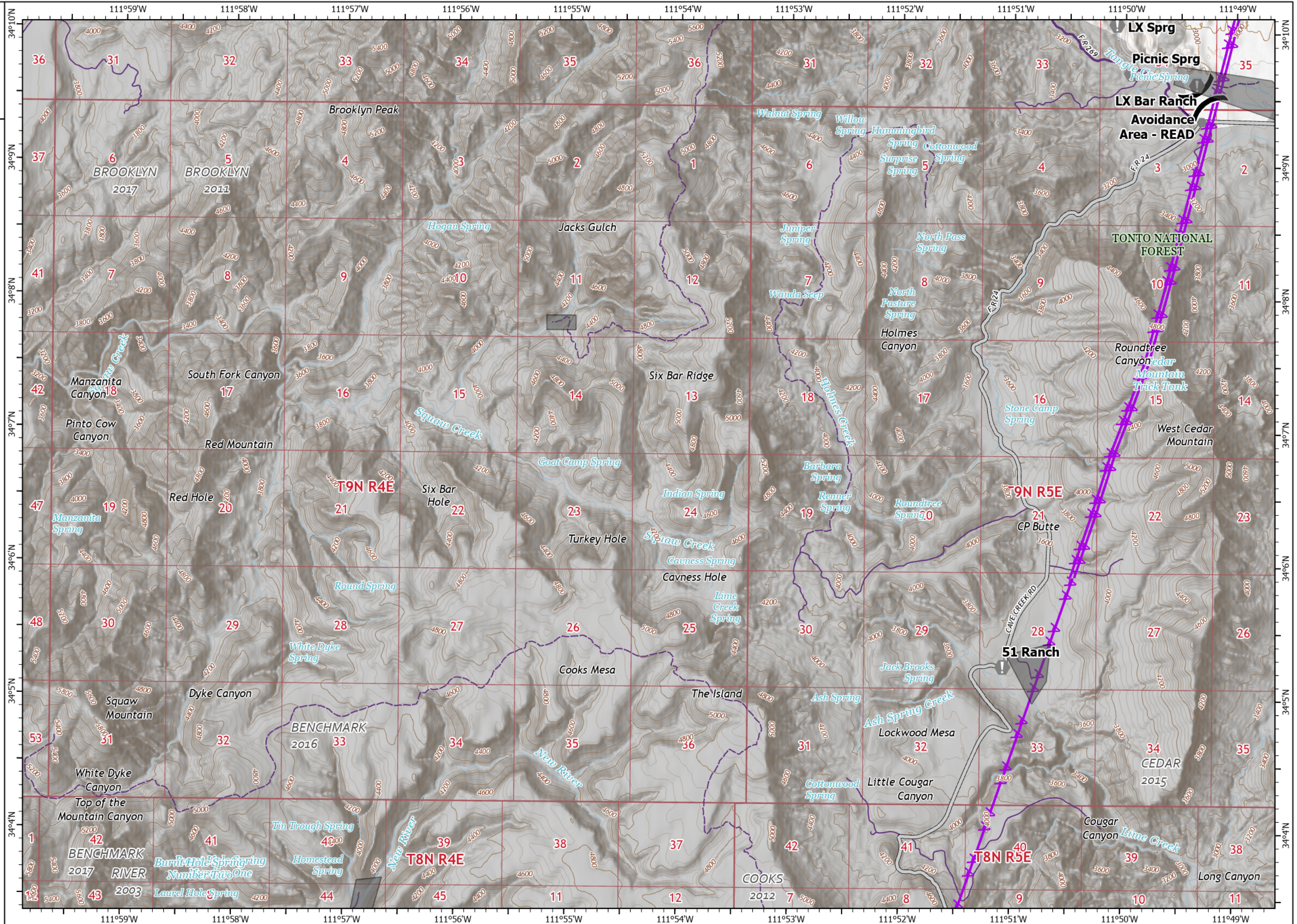
IAP

Middle
AZ-TNF-1699
7/14/2021

2,792 acres at 7/12/2021 19:30

Page 7

- (X) Division Break
- (I) Value at Risk
- (●) Other
- Access or Improved Road
- AA Aerial Hazard
- Access Roads



1:48,000 - SWIMT 4- 7/13/2021 2052
Acres from IR and GPS
North American 1983 Datum, Lat/Long Grid

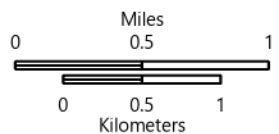
IAP

Middle
AZ-TNF-1699
7/14/2021

2,792 acres at 7/12/2021 19:30

Page 8

- Helispot
- ⌘ Division Break
- ⊙ Value at Risk
- Access or Improved Road
- Temporary Flight Restriction
- Access Roads



1:48,000 - SWIMT 4 - 7/13/2021 2053
Acres from IR and GPS
North American 1983 Datum. Lat/Long Grid

