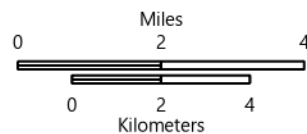


# IAP

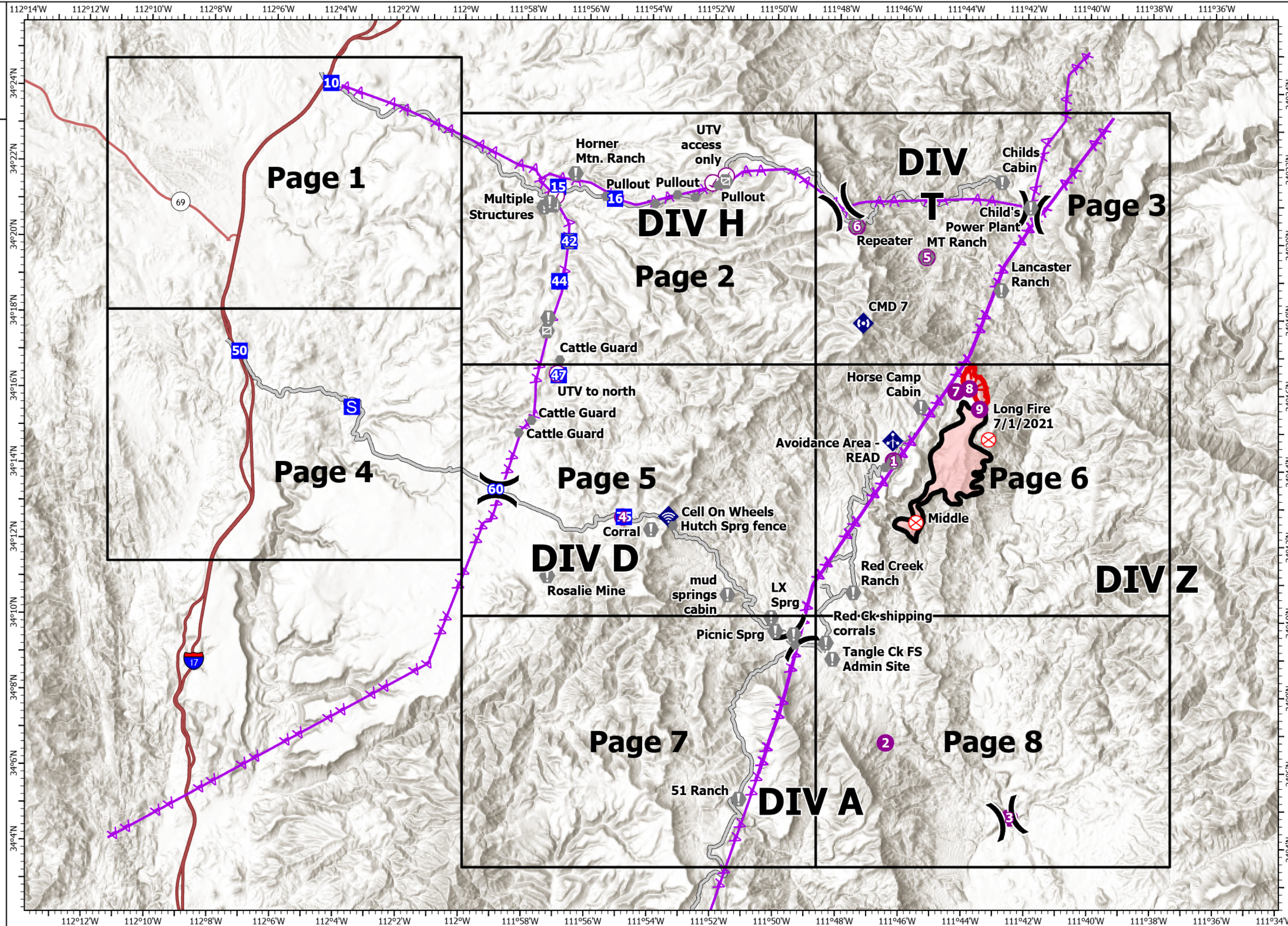
Middle  
AZ-TNF-1699  
7/16/2021

2,792 acres at 7/12/2021 19:30

- Check Point
- Helispot
- ) Division Break
- Drop Point
- S Staging Area
- ⊗ Fire Origin
- ⚠ Value at Risk
- Other
- ⊗ Gate
- ⚡ Mobile Weather Unit
- ⚡ Internet Access
- ⚡ Repeater
- Access or Improved Road
- ⚡ Aerial Hazard
- Fire Edge
- Contained Line
- ▭ Wildfire Daily Fire Perimeter



1:170,000 - SWIMT 4 - 7/15/2021 19:24  
Acres from IR and GPS  
North American 1983 Datum. Lat/Long Grid







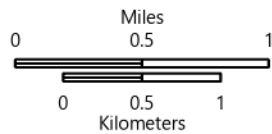
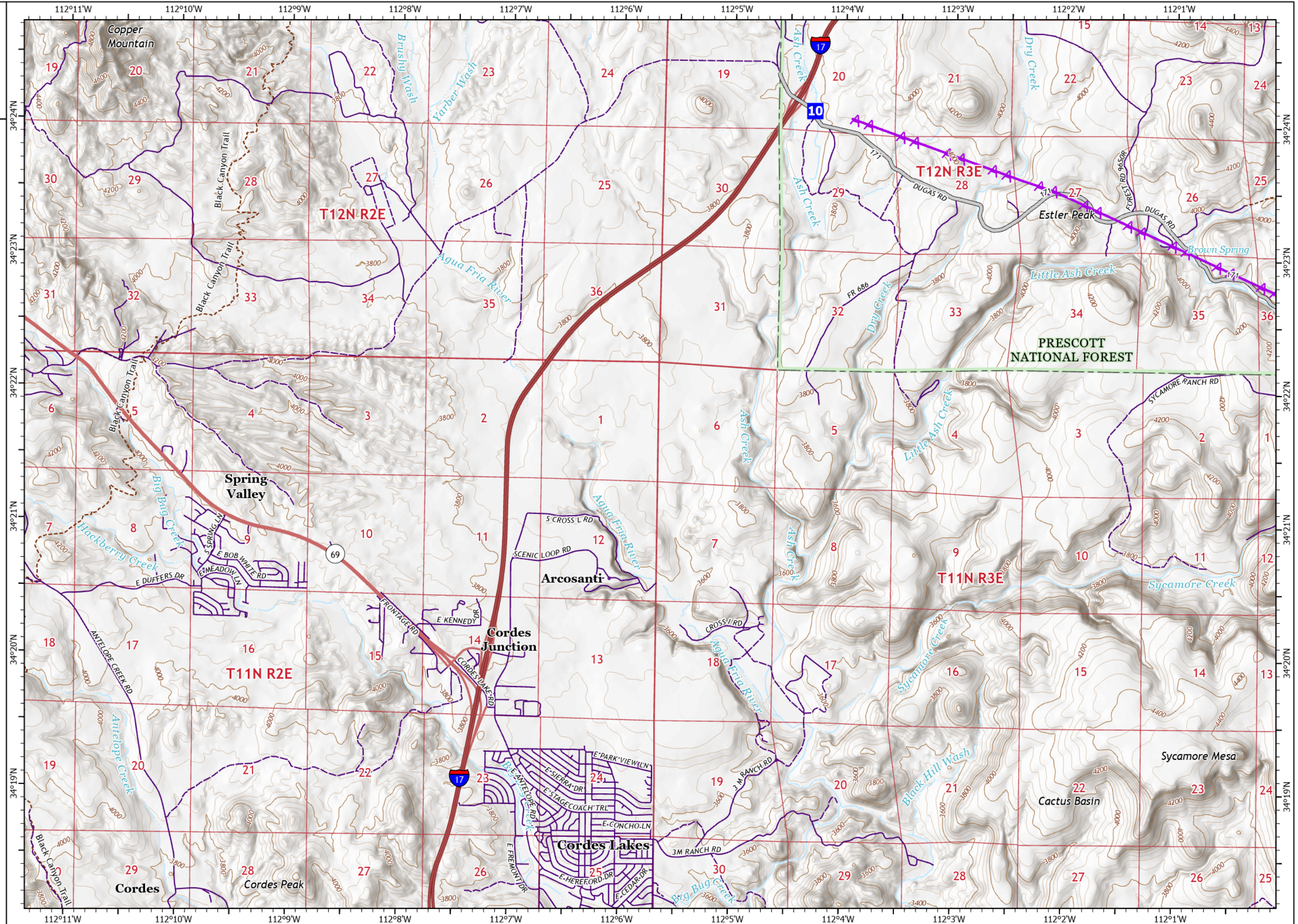
# IAP

Middle  
AZ-TNF-1699  
7/16/2021

2,792 acres at 7/12/2021 19:30

## Page 1

-  Drop Point
-  Access or Improved Road
-  Aerial Hazard
-  Access Roads



1:48,000 - SWIMT 4 - 7/15/2021 19:26  
Acres from IR and GPS  
North American 1983 Datum, Lat/Long Grid

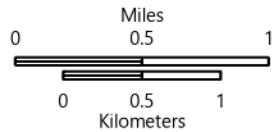
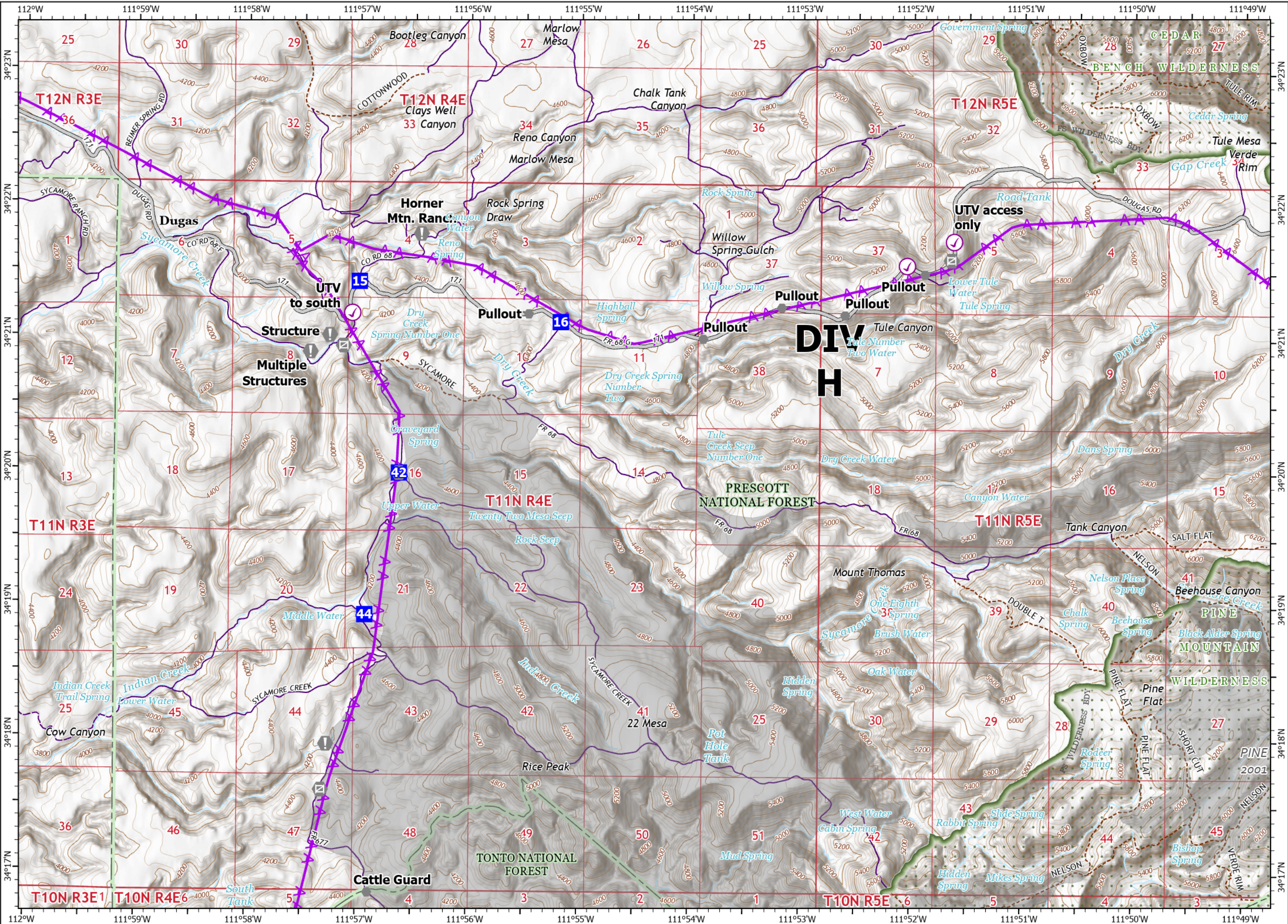
# IAP

Middle  
AZ-TNF-1699  
7/16/2021

2,792 acres at 7/12/2021 19:30

## Page 2

- ⊙ Check Point
- Drop Point
- ⊕ Value at Risk
- Other
- ⊠ Gate
- Access or Improved Road
- ⚡ Aerial Hazard
- Access Roads



1:48,000 - SWIMT 4 - 7/15/2021 19:26  
Acres from IR and GPS  
North American 1983 Datum. Lat/Long Grid

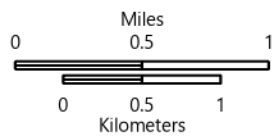
# IAP

Middle  
AZ-TNF-1699  
7/16/2021

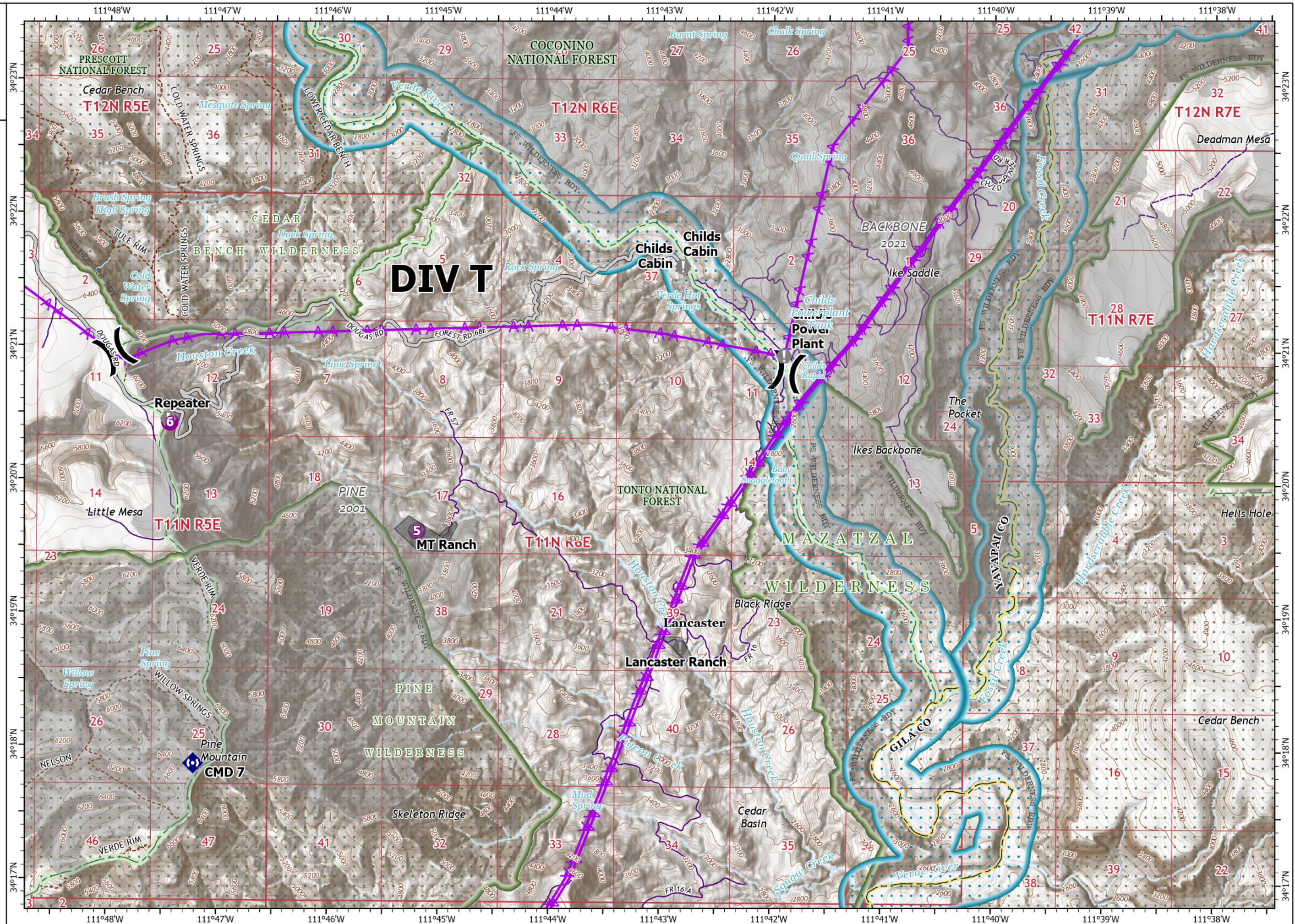
2,792 acres at 7/12/2021 19:30

## Page 3

- Helispot
- ⌘ Division Break
- ⊕ Value at Risk
- ◆ Repeater
- Access or Improved Road
- ⚡ Aerial Hazard
- ▬ Fire Edge
- Access Roads



1:48,000 - SWIMT 4 - 7/15/2021 1926  
Acres from IR and GPS  
North American 1983 Datum. Lat/Long Grid







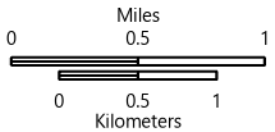
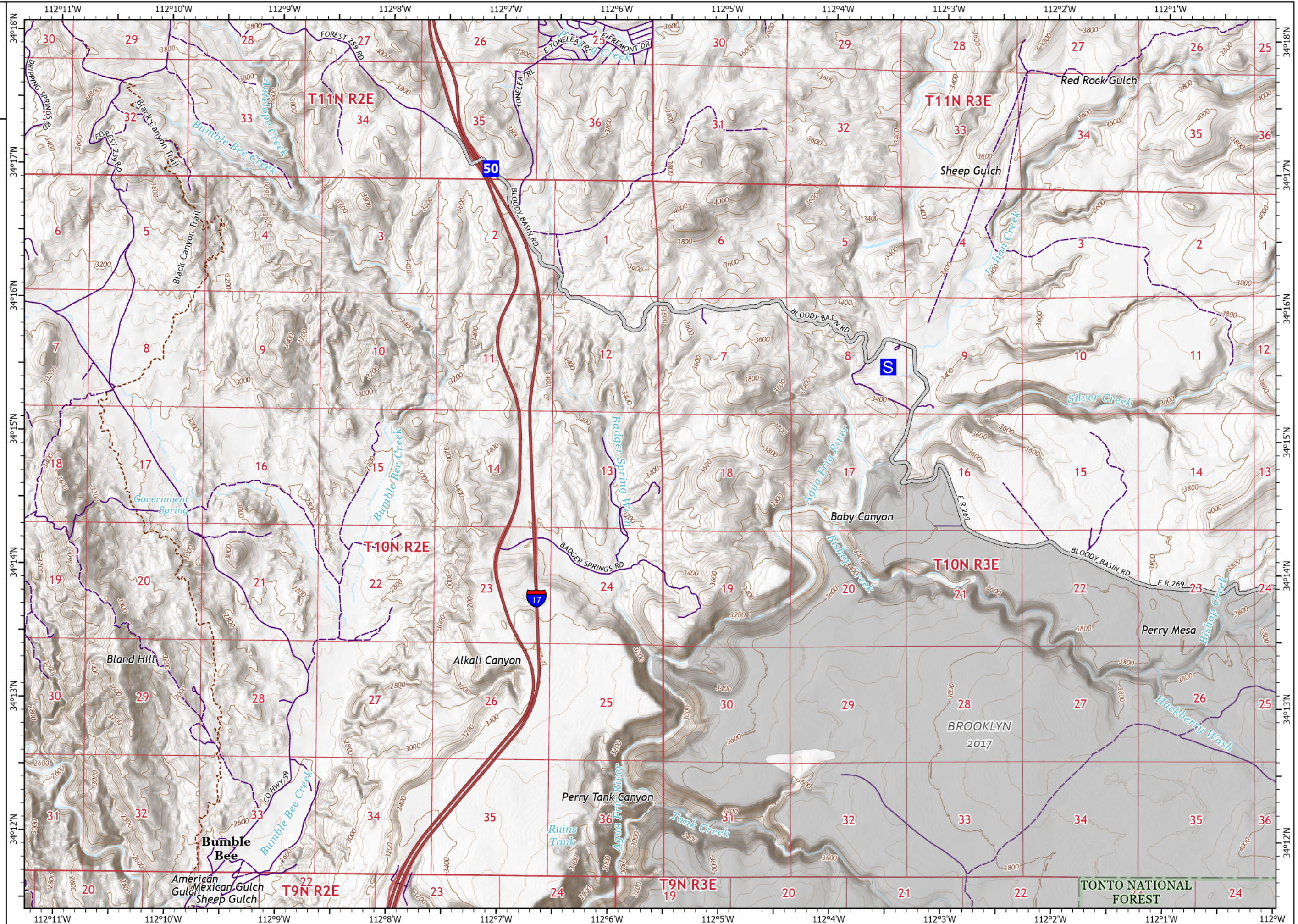
# IAP

Middle  
AZ-TNF-1699  
7/16/2021

2,792 acres at 7/12/2021 19:30

## Page 4

-  Drop Point
-  Staging Area
-  Access or Improved Road
-  Access Roads



1:48,000 - SWIMT 4 - 7/15/2021 19:27  
Acres from IR and GPS  
North American 1983 Datum. Lat/Long Grid

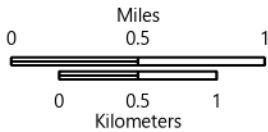
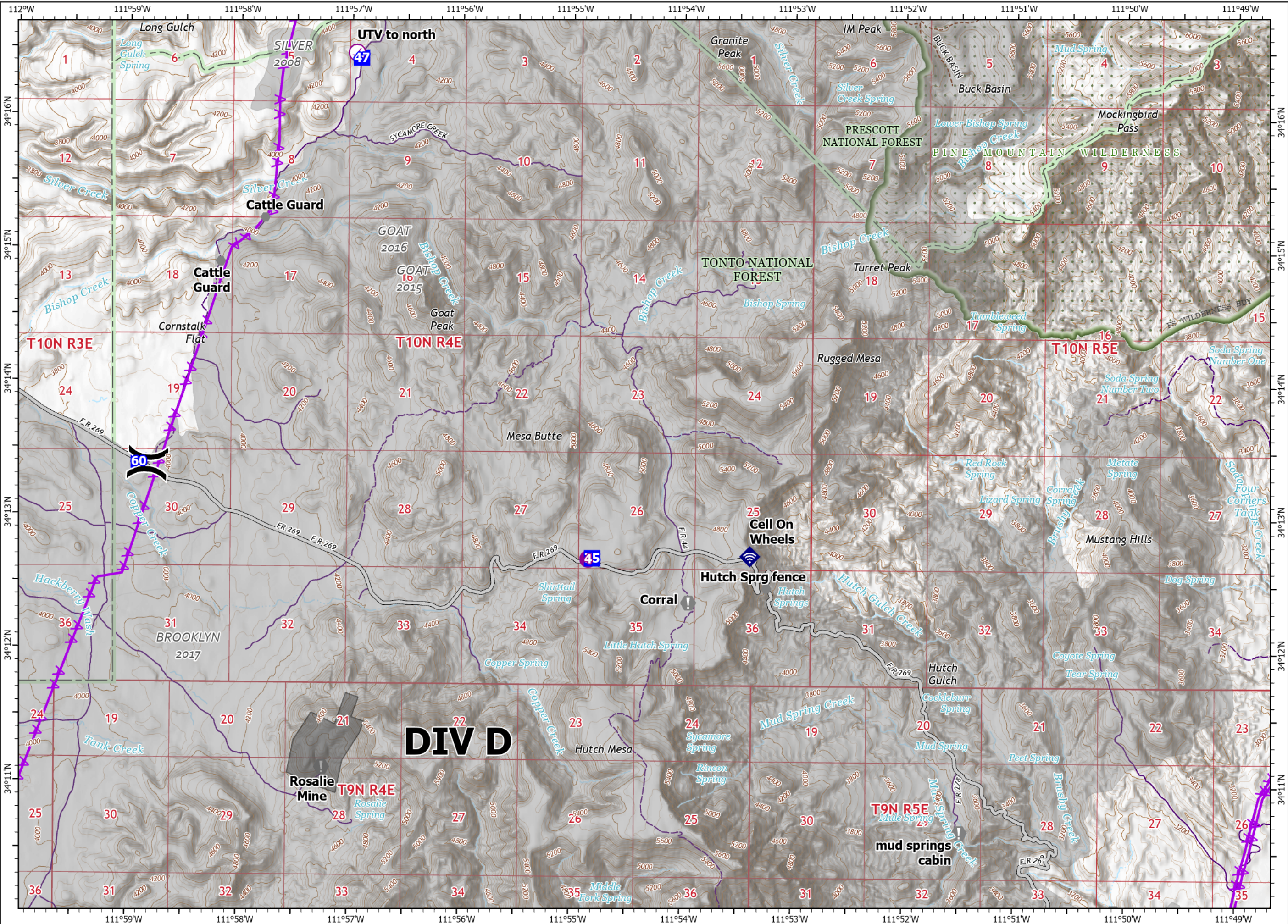
# IAP

Middle  
AZ-TNF-1699  
7/16/2021

2,792 acres at 7/12/2021 19:30

## Page 5

-  Check Point
-  Helispot
-  Division Break
-  Drop Point
-  Value at Risk
-  Other
-  Internet Access
-  Access or Improved Road
-  Aerial Hazard
-  Access Roads



1:48,000 - SWIMT 4 - 7/15/2021 19:27  
Acres from IR and GPS  
North American 1983 Datum. Lat/Long Grid

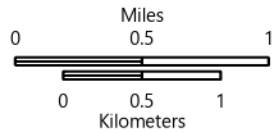
# IAP

Middle  
AZ-TNF-1699  
7/16/2021

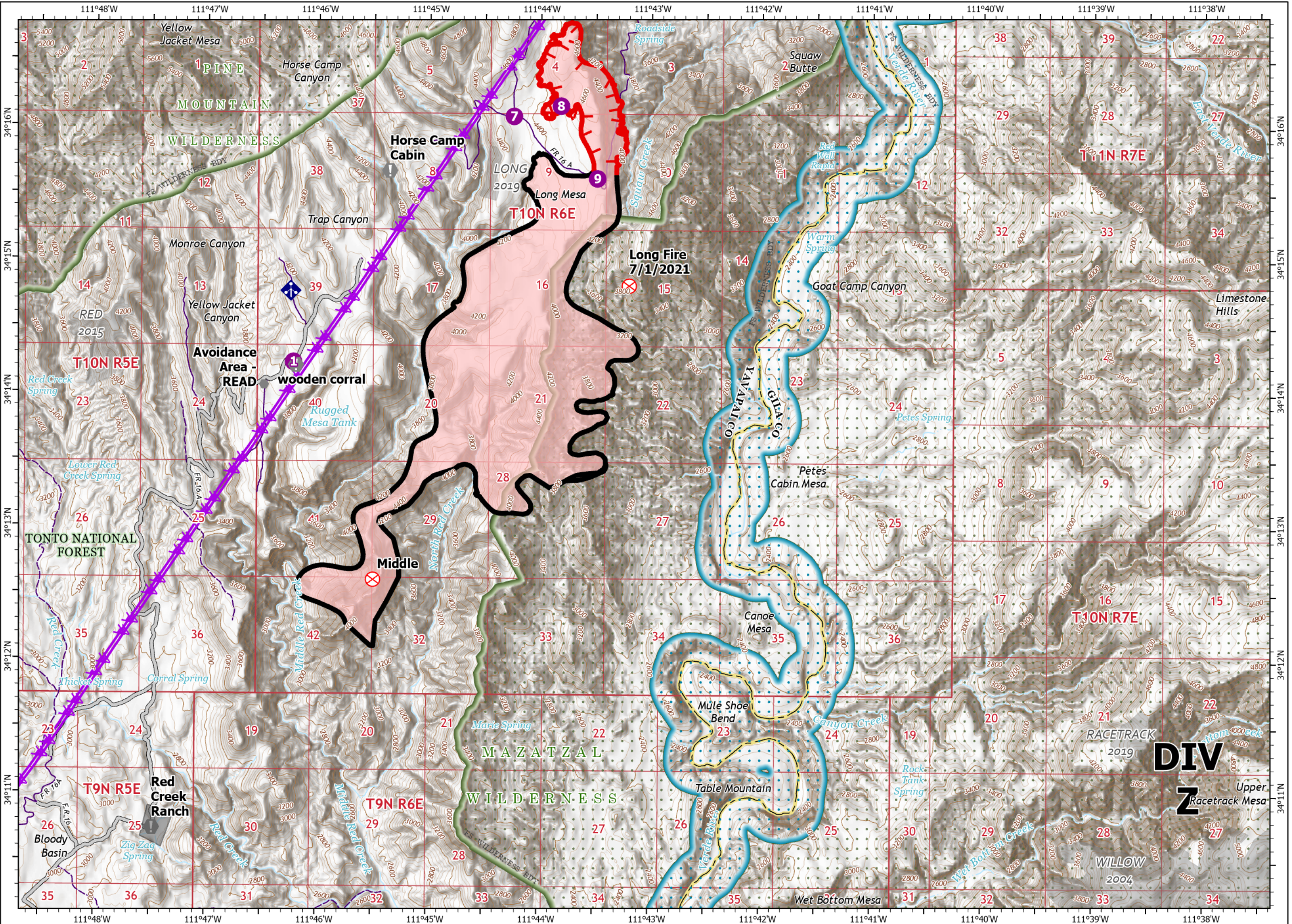
2,792 acres at 7/12/2021 19:30

## Page 6

- Helispot
- ⊗ Fire Origin
- ⊙ Value at Risk
- Other
- ◆ Mobile Weather Unit
- Access or Improved Road
- ▲ Aerial Hazard
- ▬ Fire Edge
- ▬ Contained Line
- ▬ Wildfire Daily Fire
- ▬ Perimeter
- ▬ Access Roads



1:48,000 - SWIMT 4 - 7/15/2021 19:27  
Acres from IR and GPS  
North American 1983 Datum, Lat/Long Grid

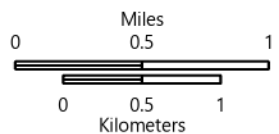


# IAP

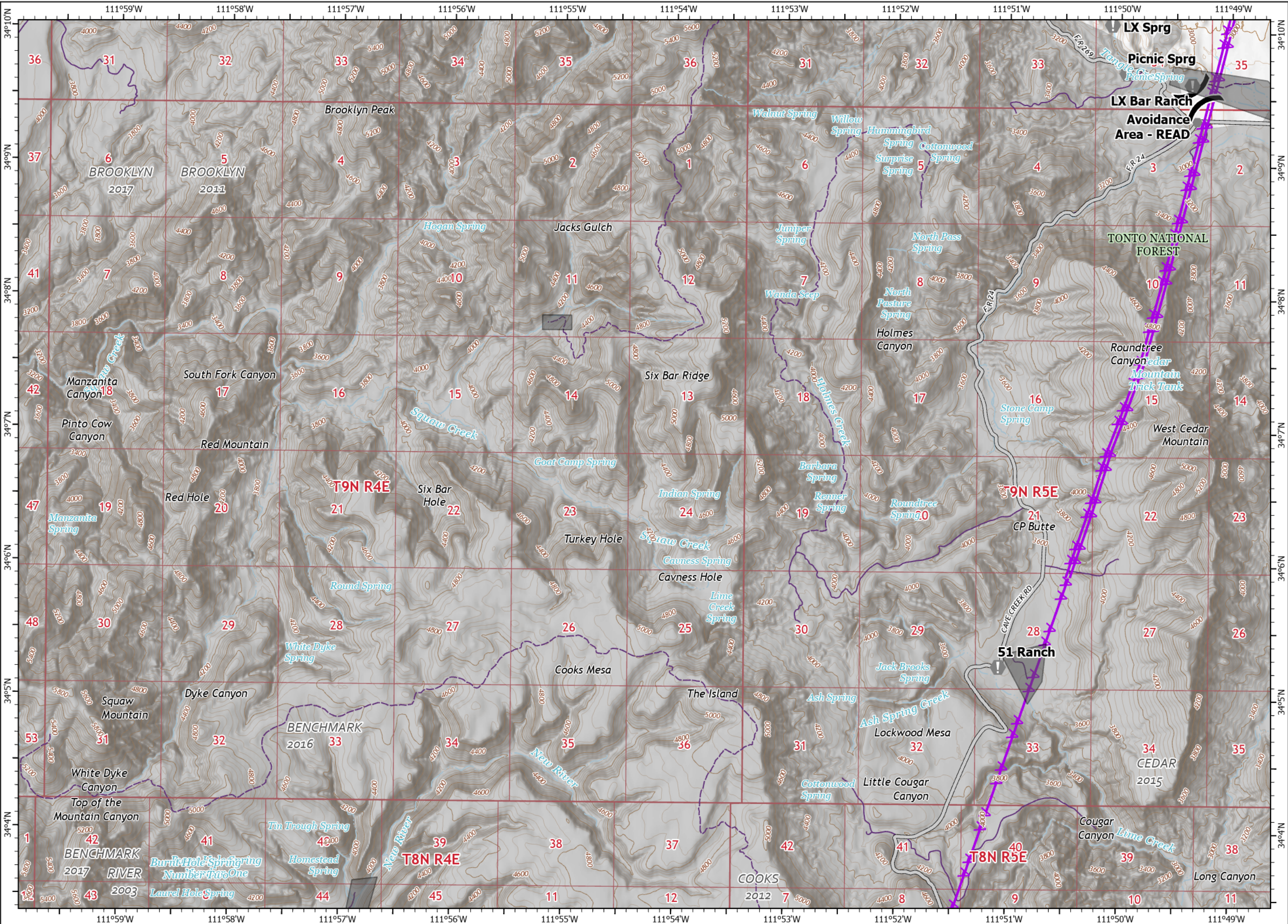
Middle  
AZ-TNF-1699  
7/16/2021  
2,792 acres at 7/12/2021 19:30

## Page 7

- ⌘ Division Break
- Ⓢ Value at Risk
- Other
- Access or Improved Road
- AA Aerial Hazard
- Access Roads



1:48,000 - SWIMT 4- 7/15/2021 19:27  
Acres from IR and GPS  
North American 1983 Datum, Lat/Long Grid



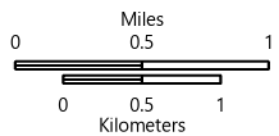
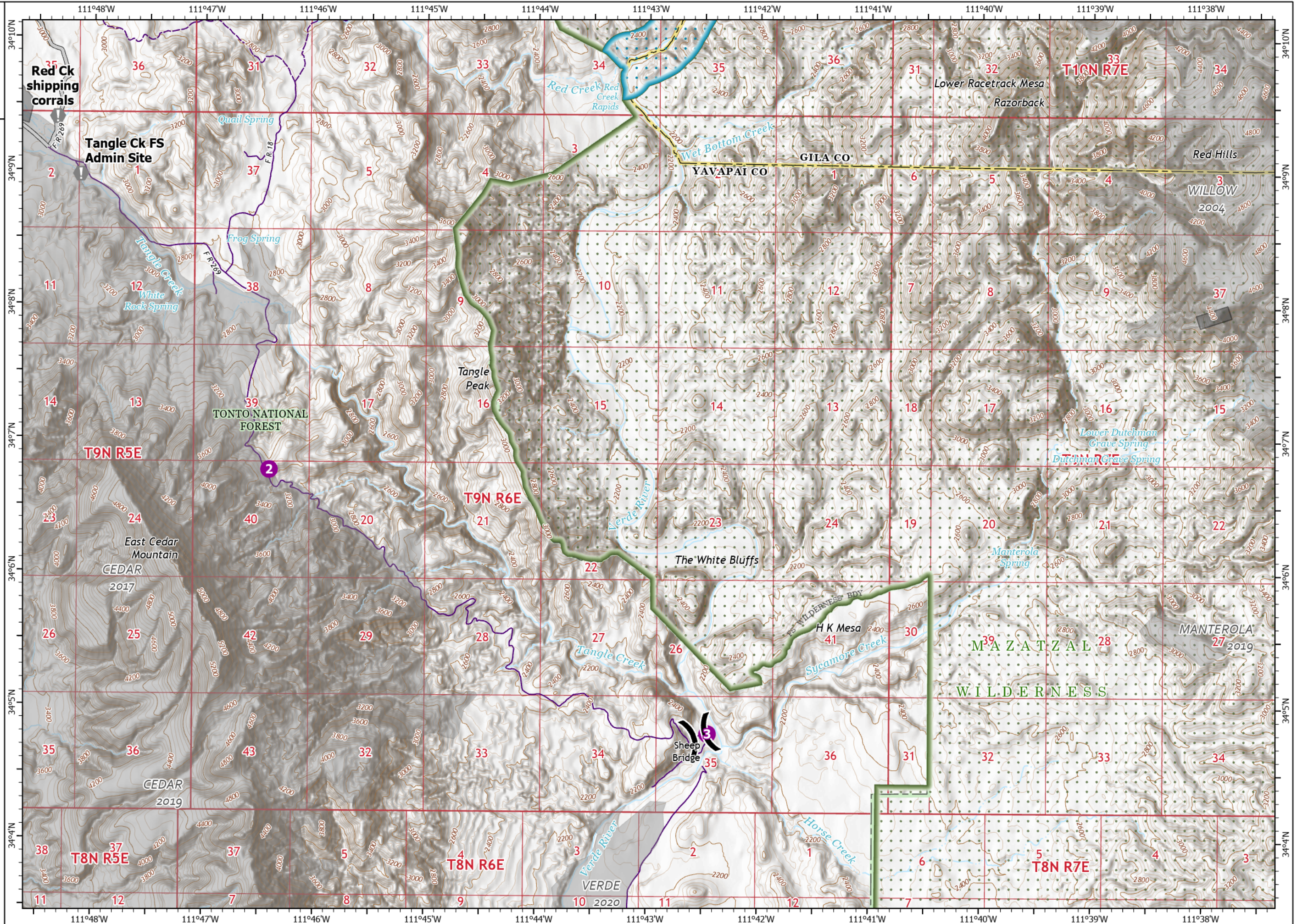


# IAP

Middle  
AZ-TNF-1699  
7/16/2021  
2,792 acres at 7/12/2021 19:30

## Page 8

- Helispot
- ⌘ Division Break
- ⊕ Value at Risk
- Access or Improved Road
- Access Roads



1:48,000 - SWIMT 4- 7/15/2021 19:27  
Acres from IR and GPS  
North American 1983 Datum. Lat/Long Grid