

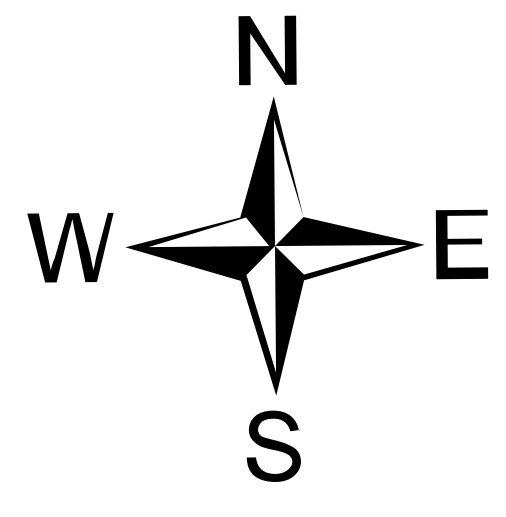




Ground Medical Evacuation Map

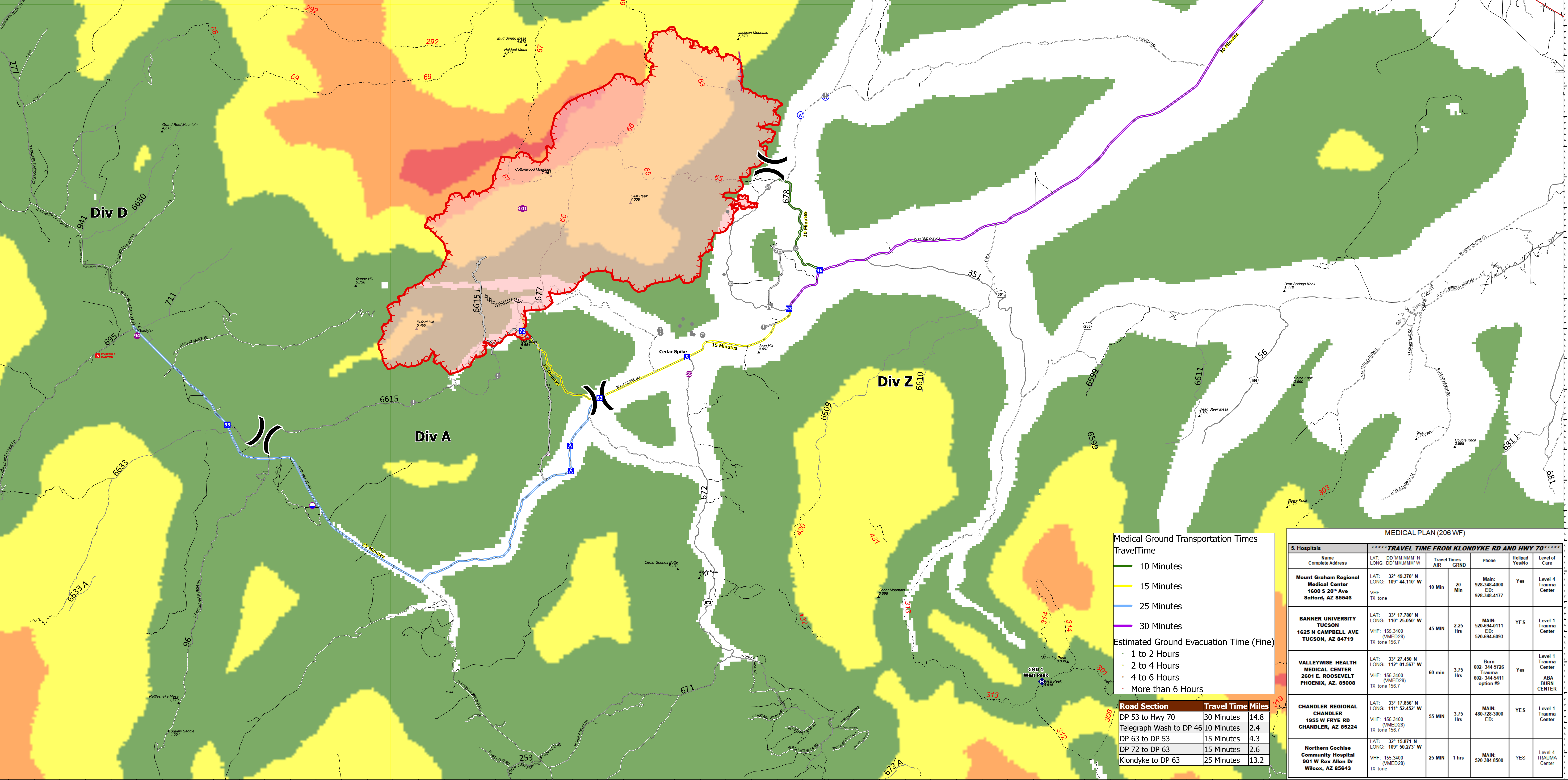
Pinnacle
AZCNF-00427
6/15/21 Day Shift
 14,487 acres at 6/14/2021 10:14

SWA IMT 3
 6/14/2021 2048
 Acres from IR
 North American 1983 Datum, Lat/Long Grid



- Dip Site
- Helispot
- X Division Break
- Drop Point
- Camp
- Value at Risk
- Other
- + Gate
- + Repeater
- + Hazard
- + Water Source
- + Completed Dozer Line
- + Access or Improved Road
- + Retardant Drop
- Fire Edge
- Wildfire Daily Fire Perimeter
- Aerial Hazard
- TRAILHEAD
- Campground
- <all other values>
- Highway
- Paved Secondary
- Unpaved
- Unpaved Minor
- Roads_Off_Forest_AZ
- 1 - Not Designated



Medical Ground Transportation Times

Travel Time

- 10 Minutes
- 15 Minutes
- 25 Minutes
- 30 Minutes

Estimated Ground Evacuation Time (Fine)

- 1 to 2 Hours
- 2 to 4 Hours
- 4 to 6 Hours
- More than 6 Hours

Road Section	Travel Time	Miles
DP 53 to Hwy 70	30 Minutes	14.8
Telegraph Wash to DP 46	10 Minutes	2.4
DP 63 to DP 53	15 Minutes	4.3
DP 72 to DP 63	15 Minutes	2.6
Klondyke to DP 63	25 Minutes	13.2

MEDICAL PLAN (206 WF)

*****TRAVEL TIME FROM KLONDYKE RD AND HWY 70*****							
S. Hospitals	Name	Complete Address	LAT. / LONG.	Travel Times (AIR / GRND)	Phone	Helipad / Yes/No	Level of Care
1	Mount Graham Regional Medical Center	1600 S 20 th Ave Safford, AZ 85546	LAT: 32° 49.370' N LONG: 109° 44.110' W	10 Min / 20 Min	Main: 928-348-4000 ED: 928-348-4177	Yes	Level 4 Trauma Center
2	BANNER UNIVERSITY TUCSON	1625 N CAMPBELL AVE TUCSON, AZ 84719	LAT: 33° 17.780' N LONG: 110° 25.050' W	45 Min / 2.25 Hrs	MAIN: 520-694-0111 Trauma ED: 520-694-6093	YES	Level 1 Trauma Center
3	VALLEYWISE HEALTH MEDICAL CENTER	2601 E. ROOSEVELT PHOENIX, AZ. 85008	LAT: 33° 27.450' N LONG: 112° 01.567' W	60 min / 3.75 Hrs	Burn 602-344-5726 Trauma 602-344-5411 option #9	Yes	Level 1 Trauma Center ABA BURN CENTER
4	CHANDLER REGIONAL CHANDLER	1955 W FRYE RD CHANDLER, AZ 85224	LAT: 33° 17.856' N LONG: 111° 52.452' W	55 Min / 3.75 Hrs	MAIN: 480-728-3000 ED:	YES	Level 1 Trauma Center
5	Northern Cochise Community Hospital	901 W Rex Allen Dr Wilcox, AZ 85643	LAT: 32° 15.871' N LONG: 109° 50.273' W	25 Min / 1 hr	MAIN: 520-384-5500	YES	Level 4 TRAUMA CENTER