
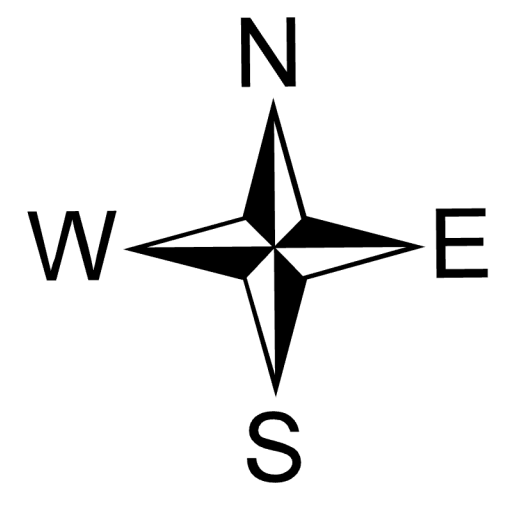

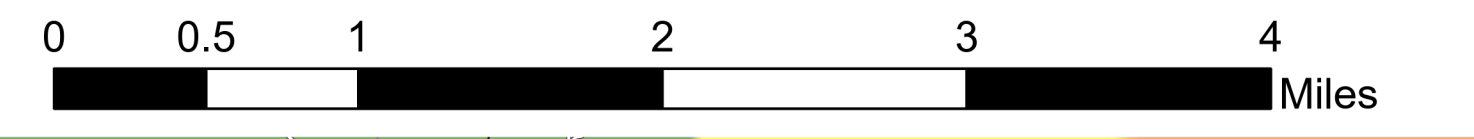


Ground Medical Evacuation Map

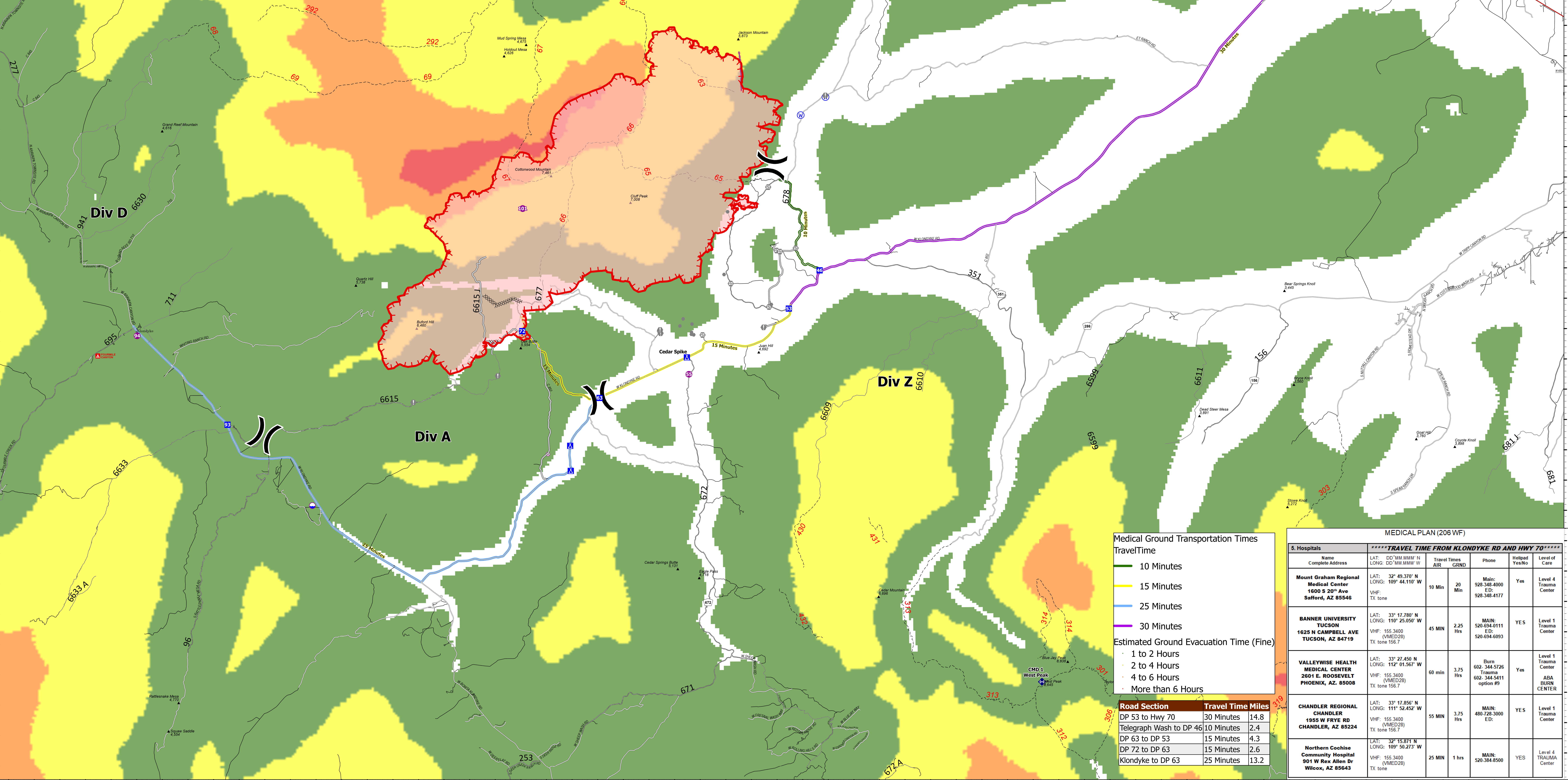
Pinnacle
AZCNF-00427
6/15/21 Day Shift
 14,487 acres at 6/14/2021 10:14

SWA IMT 3
 6/14/2021 2050
 Acres from IR
 North American 1983 Datum, Lat/Long Grid



- Dip Site
- Helispot
- X Division Break
- Drop Point
- Camp
- Value at Risk
- Other
- + Repeater
- * Hazard
- + Water Source
- + Completed Dozer Line
- + Access or Improved Road
- + Retardant Drop
- Fire Edge
- Wildfire Daily Fire Perimeter
- Aerial Hazard
- TRAILHEAD
- Campground
- <all other values>
- Highway
- Paved Secondary
- Unpaved
- Unpaved Minor
- Roads_Off_Forest_AZ
- 1 - Not Designated



Medical Ground Transportation Times

Travel Time

- 10 Minutes
- 15 Minutes
- 25 Minutes
- 30 Minutes

Estimated Ground Evacuation Time (Fine)

- 1 to 2 Hours
- 2 to 4 Hours
- 4 to 6 Hours
- More than 6 Hours

| Road Section | Travel Time | Miles |
|-------------------------|-------------|-------|
| DP 53 to Hwy 70 | 30 Minutes | 14.8 |
| Telegraph Wash to DP 46 | 10 Minutes | 2.4 |
| DP 63 to DP 53 | 15 Minutes | 4.3 |
| DP 72 to DP 63 | 15 Minutes | 2.6 |
| Klondyke to DP 63 | 25 Minutes | 13.2 |

MEDICAL PLAN (206 WF)

| *****TRAVEL TIME FROM KLONDYKE RD AND HWY 70***** | | | | | | |
|---|---|---|--|-------------------|---|--|
| S. Hospitals | Name | Complete Address | LAT. / LONG. | Travel Times | Phone | Helipad / Level of Care |
| | | | | AIR / GRND | | Freq/No. / Care |
| | Mount Graham Regional Medical Center | 1600 S 20 th Ave Safford, AZ 85546 | LAT: 32° 49.370' N LONG: 109° 44.110' W | 10 Min / 20 Min | Main: 928-348-4000 ED: 928-348-4177 | Yes / Level 4 Trauma Center |
| | BANNER UNIVERSITY TUCSON | 1625 N CAMPBELL AVE TUCSON, AZ 84719 | LAT: 33° 17.780' N LONG: 110° 25.050' W | 45 Min / 2.25 Hrs | MAIN: 520-694-0111 Trauma ED: 520-694-6093 | YES / Level 1 Trauma Center |
| | VALLEYWISE HEALTH MEDICAL CENTER | 2601 E. ROOSEVELT PHOENIX, AZ. 85008 | LAT: 33° 27.450' N LONG: 112° 01.567' W | 60 min / 3.75 Hrs | Burn 602-344-5726 Trauma 602-344-5411 option #9 | Yes / Level 1 Trauma Center ABA BURN CENTER |
| | CHANDLER REGIONAL CHANDLER | 1955 W FRYE RD CHANDLER, AZ 85224 | LAT: 33° 17.856' N LONG: 111° 52.452' W | 55 Min / 3.75 Hrs | MAIN: 480-728-3000 ED: | YES / Level 1 Trauma Center |
| | Northern Cochise Community Hospital | 901 W Rex Allen Dr Wilcox, AZ 85643 | LAT: 32° 15.871' N LONG: 109° 50.273' W | 25 Min / 1 hr | MAIN: 520-384-6500 | YES / Level 4 TRAUMA CENTER |