

110°23'W 110°22'W 110°21'W 110°20'W 110°19'W 110°18'W 110°17'W 110°16'W 110°15'W 110°14'W 110°13'W 110°12'W

Briefing Map

Pinnacle
AZCNF-00427
6/17/2021 Day Shift
17,453 acres at 6/15/2021 09:34



- Completed Burnout
- Completed Dozer Line
- Completed Hand Line
- Access or Improved Road
- Retardant Drop
- Temporary Flight Restriction
- Fire Edge
- Contained Line
- Dip Site
- Helispot
- Division Break
- Drop Point
- Camp
- Mobile Weather Unit
- Repeater
- Safety Zone
- Water Source
- American Indian Reservation
- American Indian Reservation - Private
- BLM
- NGO
- State

Div F

Div D

Div A

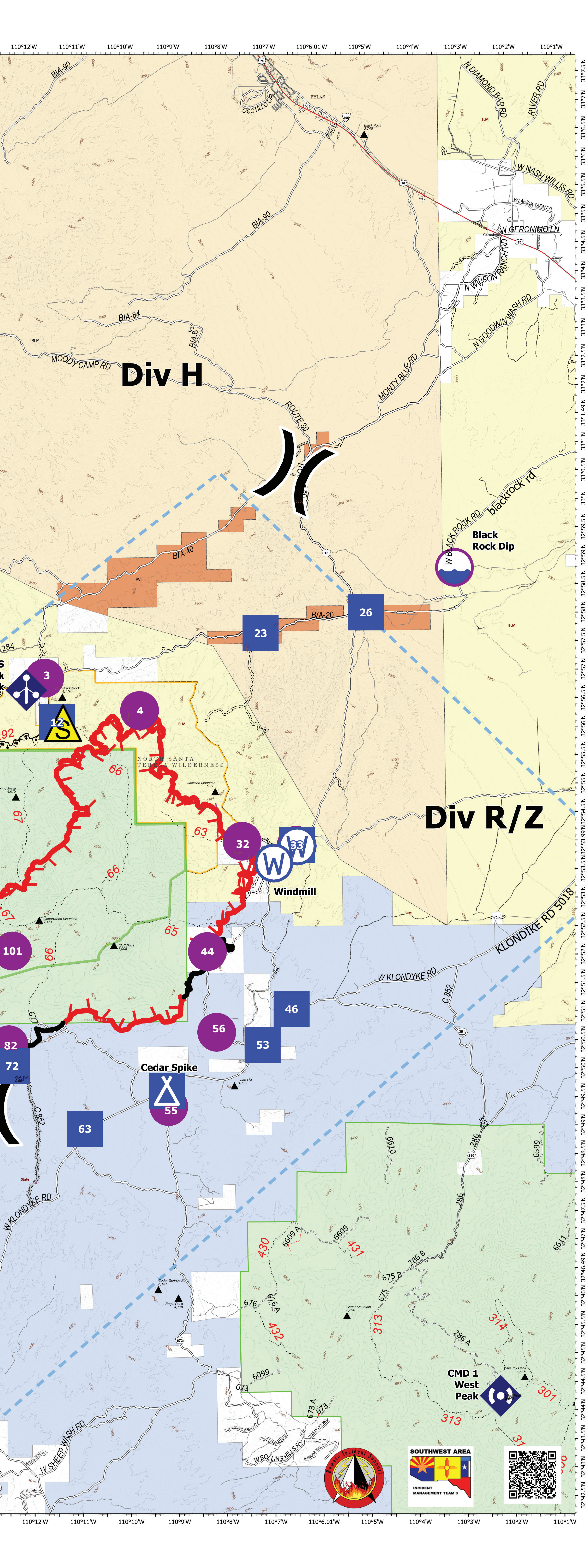
SANTA TERESA WILDERNESS CORONADO NATIONAL FOREST

IRAWS
9 Black
Rock

Klondyke Dip

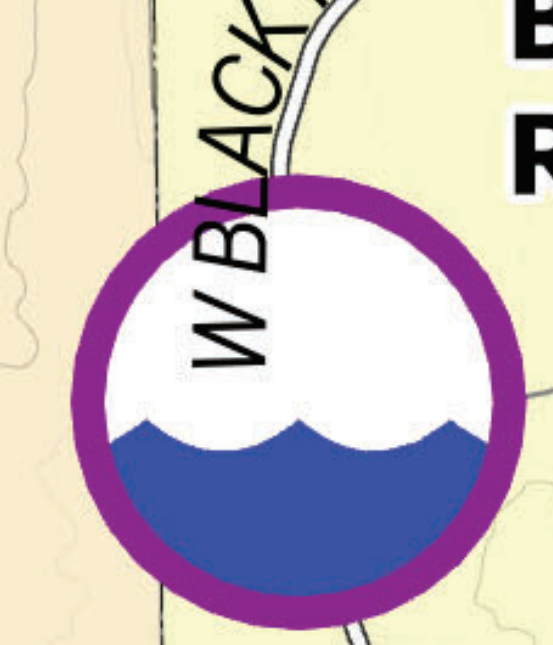
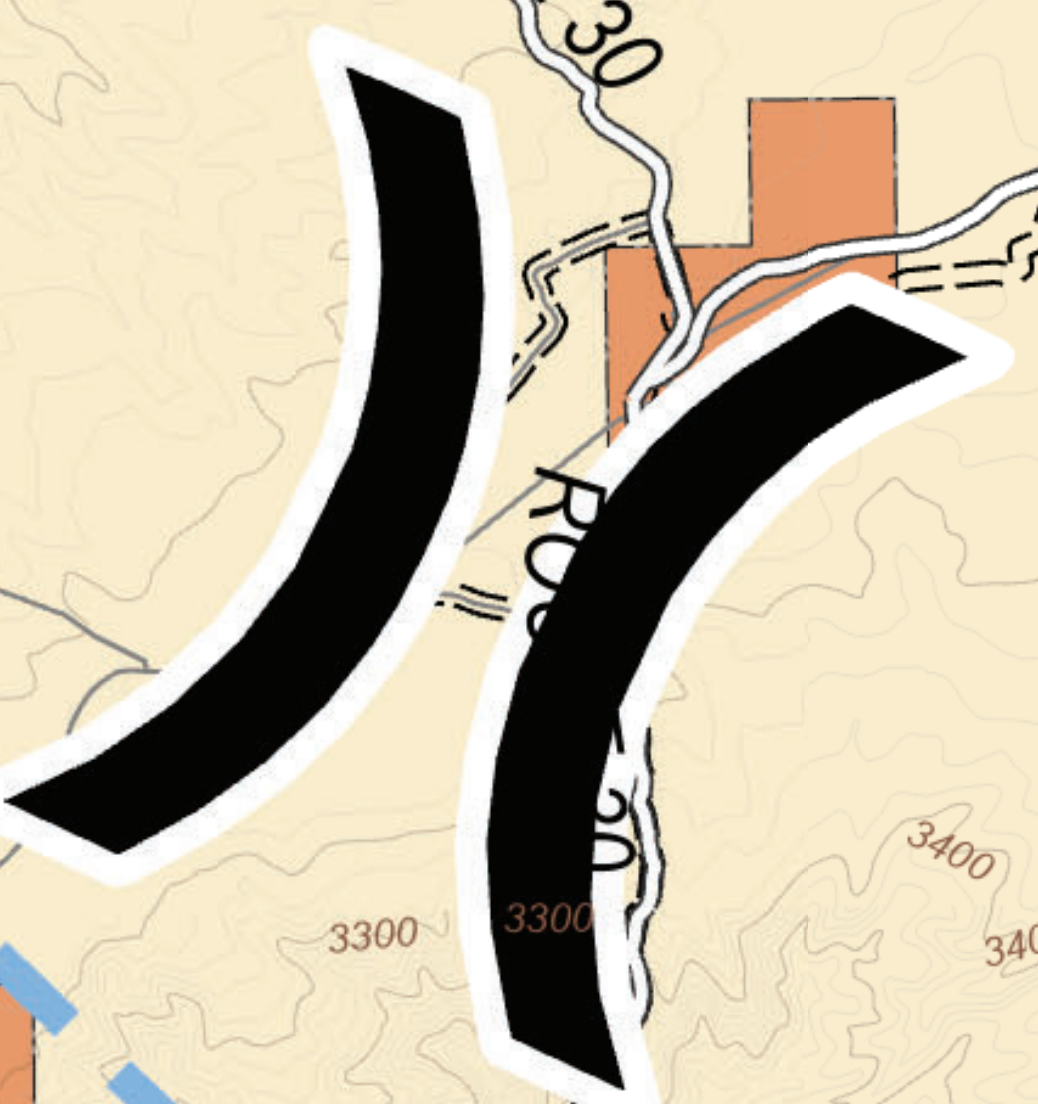
SWIMT Team 3 GIS
6/16/2021 2207
Acres from FireWatch IR
North American 1983 Datum, LatLong

110°23'W 110°22'W 110°21'W 110°20'W 110°19'W 110°18'W 110°17'W 110°16'W 110°15'W 110°14'W 110°13'W 110°12'W



Div H

Div R/Z



110°12'W 110°11'W 110°10'W 110°9'W 110°8'W 110°7'W 110°6.01'W 110°5'W 110°4'W 110°3'W 110°2'W 110°1'W

110°12'W 110°11'W 110°10'W 110°9'W 110°8'W 110°7'W 110°6.01'W 110°5'W 110°4'W 110°3'W 110°2'W 110°1'W

Map labels and text: BIA-90, BIA-84, BIA-83, BIA-40, BIA-20, ROUTE 30, MONTE BLUE RD, W BLACK ROCK RD, Blackrock rd, W NASH WILLIS RD, W GERONIMO LN, W LARSON FARM RD, N WILSON RANCH RD, N GOODWIN WASH RD, RIVER RD, N DIAMOND BAR RD, MOODY CAMP RD, Black Point 2,746, PVT, W KLONDIKE RD, C 852, C 851, W SHEEP WASH RD, W ROLLING HILLS RD, W WATTLE RIVER RD, Cedar Springs Butte 5,131, Eagle Pass 4,716, Cedar Mountain 6,696, Blue Jay Peak 8,238, Juan Hill 4,692, Jackson Mountain 5,873, Cottonwood Mountain 7,461, Spring Mesa 4,675, Cliff Peak 7,006, 284, 92, 3, 12, 4, 66, 67, 63, 32, 33, 26, 23, 101, 66, 65, 44, 56, 46, 53, 72, 82, 63, 55, 430, 609 A, 609, 431, 675 B, 286 B, 6610, 286, 6599, 676, 676 A, 432, 6099, 673 A, 673, 313, 675, 286 A, 314, 307, 313, 31, 32°42.5'N 32°43'N 32°43.5'N 32°44'N 32°44.5'N 32°45'N 32°45.5'N 32°46'N 32°46.5'N 32°47'N 32°47.5'N 32°48'N 32°48.5'N 32°49'N 32°49.5'N 32°50'N 32°50.5'N 32°51'N 32°51.5'N 32°52'N 32°52.5'N 32°53'N 32°53.5'N 32°54'N 32°54.5'N 32°55'N 32°55.5'N 32°56'N 32°56.5'N 32°57'N 32°57.5'N 32°58'N 32°58.5'N 32°59'N 32°59.5'N 33°N 33°0.5'N 33°1'N 33°1.5'N 33°2'N 33°2.5'N 33°3'N 33°3.5'N 33°4'N 33°4.5'N 33°5'N 33°5.5'N 33°6'N 33°6.5'N 33°7'N 33°7.5'N