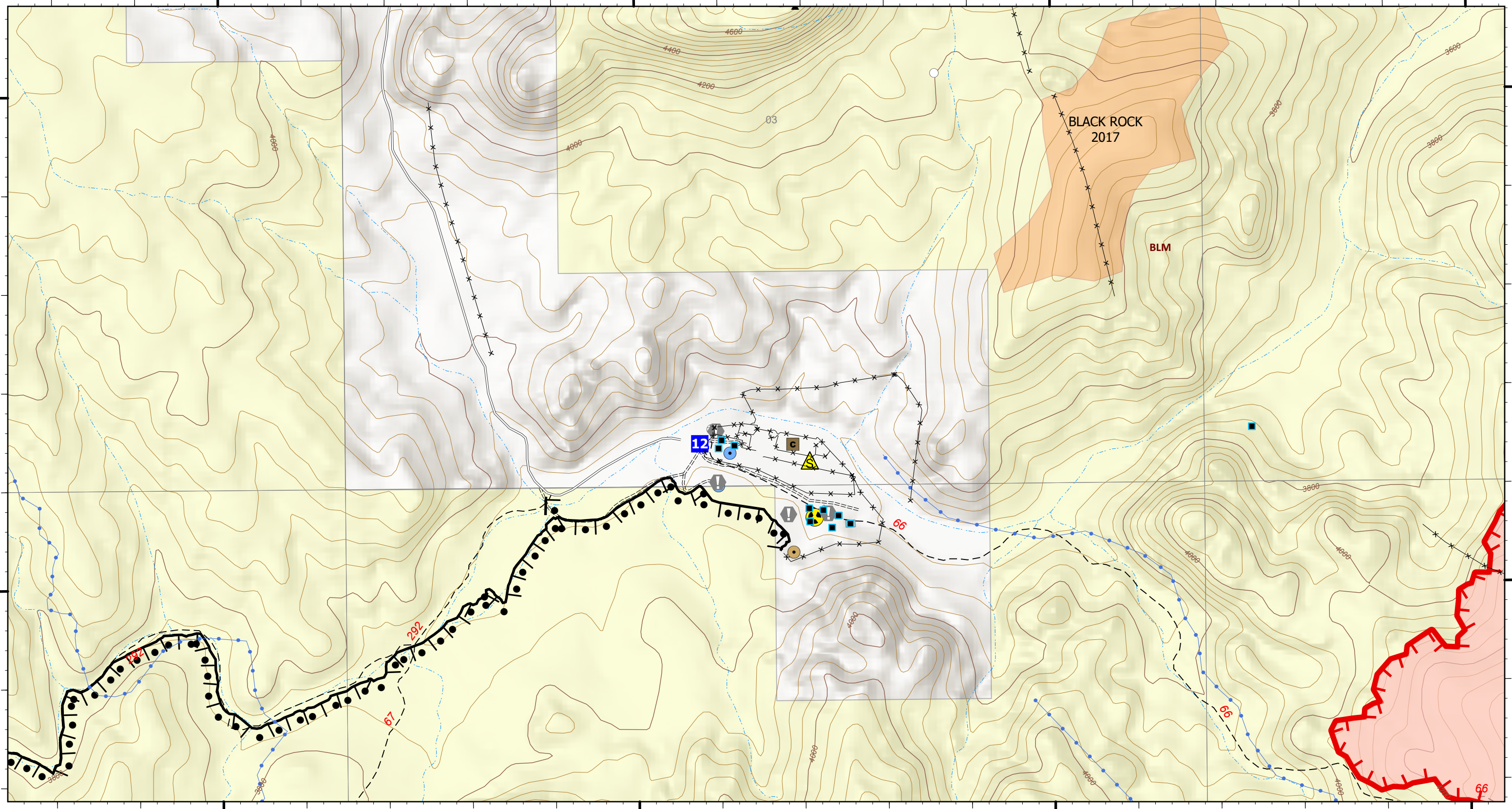


110°12.2'W 110°12'W 110°11.8'W 110°11.6'W 110°11.4'W 110°11.2'W 110°11'W 110°10.81'W 110°10.6'W

32°55.8'N 32°55.9'N 32°56'N 32°56.09'N 32°56.2'N 32°56.3'N 32°56.4'N 32°56.5'N

32°55.8'N 32°55.9'N 32°56'N 32°56.09'N 32°56.2'N 32°56.3'N 32°56.4'N 32°56.5'N



OPS - Black Rock

Pinnacle
AZCNF-00427
06/17/2021 Day

17,453 acres at 6/15/2021 09:34

- Logistics**
 Drop Point
- Reference**
 Value at Risk
- Safety**
 Safety Zone
 Hazard

- Ops Completed**
 Completed Burnout
- Fire Perimeter**
 Fire Edge
 Wildfire Daily Fire Perimeter
- Roads**
 Unpaved Minor
 Secondary Paved

- Trails**
 1 - Not Designated
- Fire History**
 2011 - 2020
- Ownership**
 BLM
 Potential Structures

- Range Improvements**
 Corral
 Dirt Tank or Reservoir
 Solar Pump
 Storage Tank
 Well
 Pipe
 Fence

6/16/2021 2200
Acres from FireWatch IR
North American 1983 Datum. LatLong Grid

