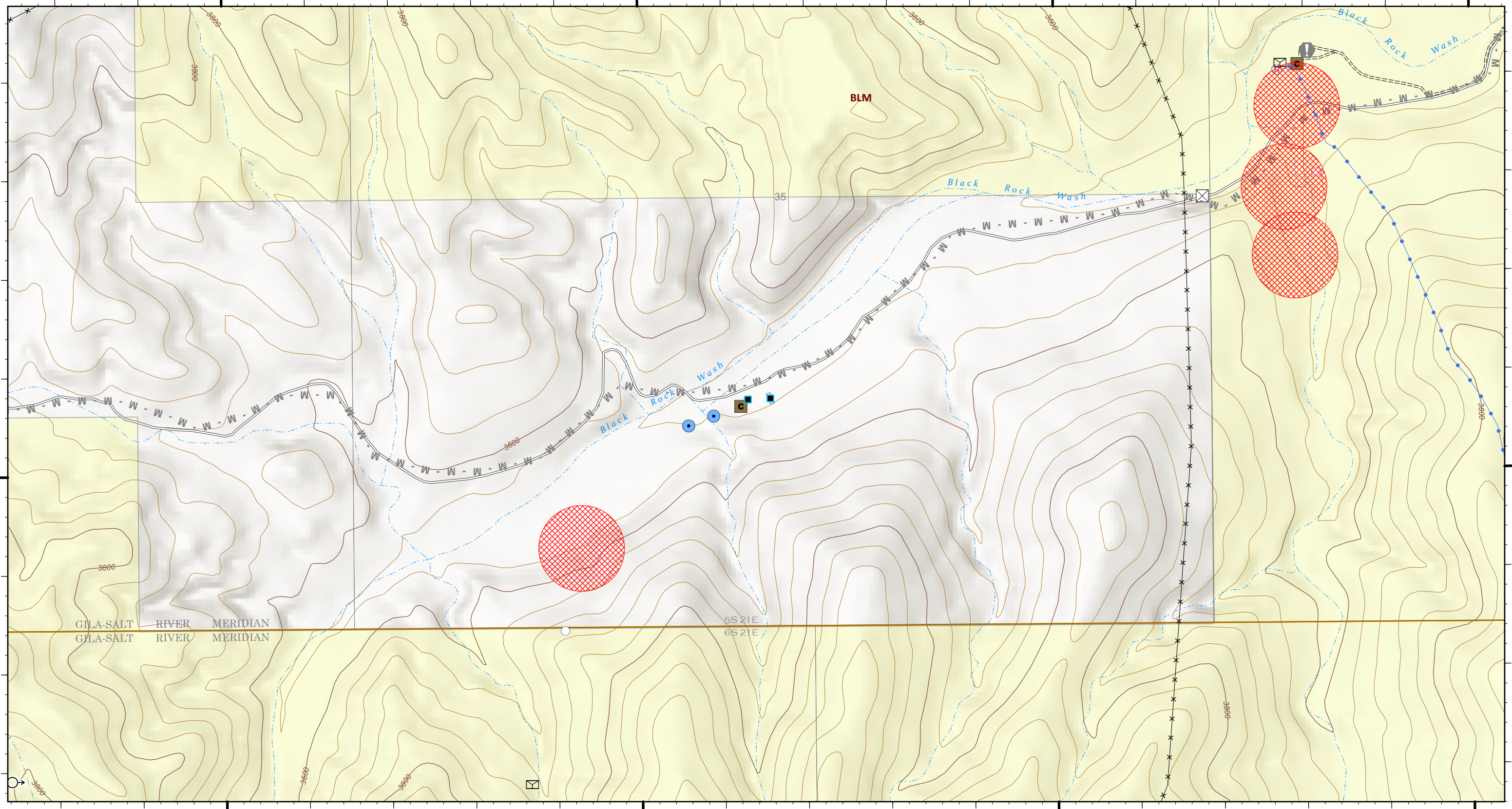


110°10.7'W 110°10.5'W 110°10.3'W 110°10.1'W 110°9.9'W 110°9.7'W 110°9.5'W 110°9.3'W 110°9.1'W 110°9'W

32°56.7'N 32°56.8'N 32°56.9'N 32°57'N 32°57.1'N 32°57.2'N 32°57.29'N 32°57.4'N

32°56.7'N 32°56.8'N 32°56.9'N 32°57'N 32°57.1'N 32°57.2'N 32°57.29'N 32°57.4'N



**OPS - Glover**

Pinnacle  
AZCNF-00427  
06/17/2021 Day

17,453 acres at 6/15/2021 09:34

**Reference**

- Value at Risk
- Ops Planned**
- Planned Mixed Construction Line

**Roads**

- Unpaved Minor
- Secondary Paved

**Ownership**

- BLM
- Avoidance Areas
- Potential Structures

**Range Improvements**

- Cattleguard
- Corral
- Solar Pump
- Spring
- Storage Tank
- Trough
- Well

**Pipe**

- Pipe
- Fence



6/16/2021 2156  
Acres from FireWatch IR  
North American 1983 Datum. LatLong Grid

