

# Medical Ground Transportation Map



Pinnacle  
AZCNF-00427  
6/18/21 Day Shift  
26,460 acres at 6/17/2021 13:16



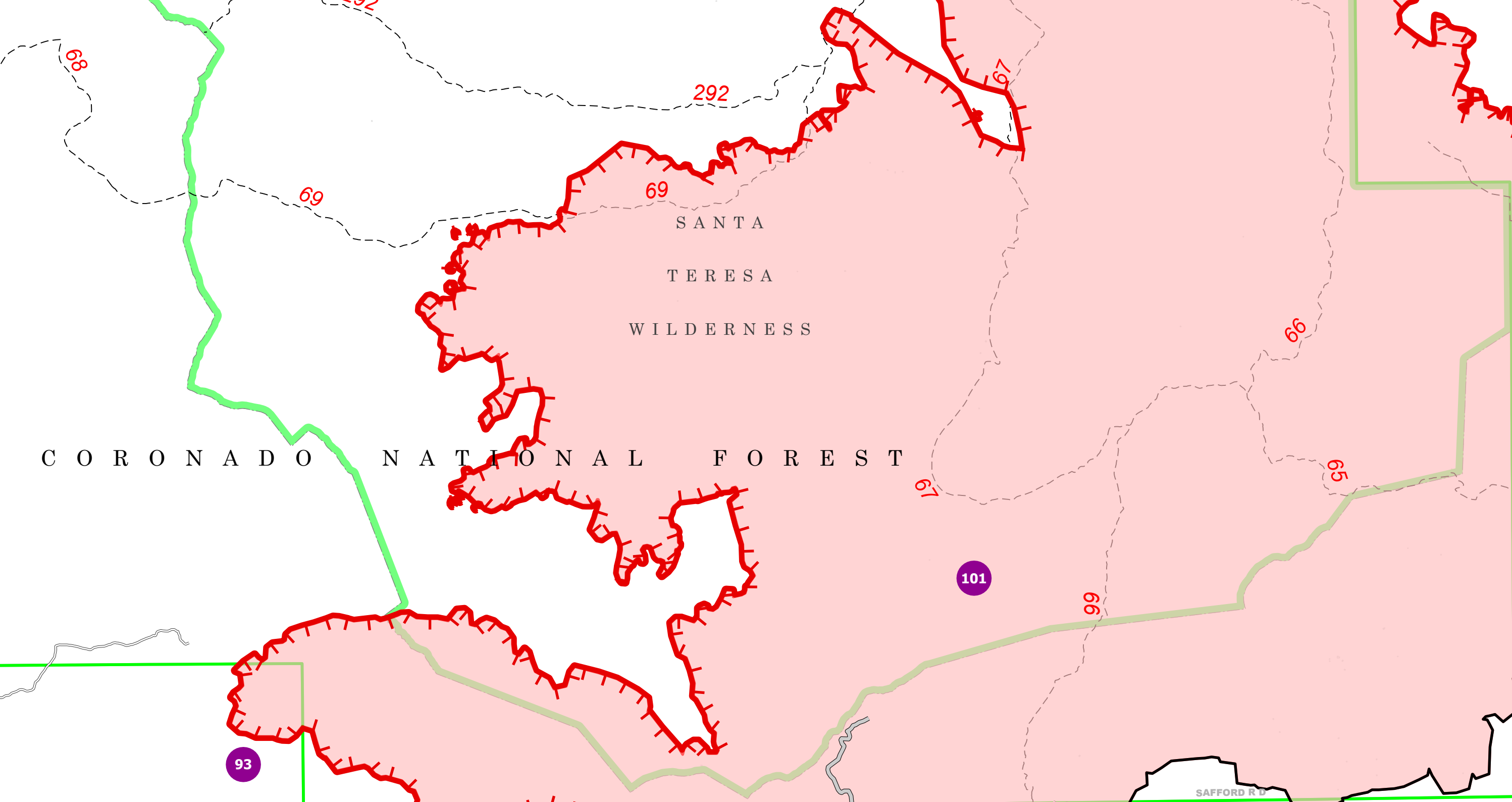
Div F

Div H

Div D

Div R/Z

Div A



4X4 Only  
West of Intersection

Road Section	Travel Time	Miles
DP 46 to ET Ranch Rd	15 Minutes	8.7
Telegraph Wash to DP 46	10 Minutes	2.4
DP 63 to DP 46	20 Minutes	5.3
DP 72 to DP 63	15 Minutes	2.6
Klondyke to DP 63	25 Minutes	13.2
Windmill Water to Klondyke Rd	25 Minutes	8.7
DP/Hazard LPG site to DP 227	60 Minutes	18.2
ET Ranch Rd to Hwy 70	15 Minutes	5.2

8. Hospitals								
Name	Complete Address	LAT: DD MM SS.SSS W	LONG: DD MM SS.SSS W	Travel Times AIR	Travel Times GROUND	Phone	Website	Level of Care
Mount Graham Regional Medical Center	1600 S 20th Ave Safford, AZ 85546	32° 43.370' N	109° 44.110' W	10 Min	20 Min	Main: 928.348.4000 ED: 928.348.4177	Yes	Level 4 Trauma Center
BANNER UNIVERSITY TUCSON	1625 N CAMPBELL AVE TUCSON, AZ 84719	32° 17.780' N	110° 25.050' W	45 MN	2.25 Hrs	MAIN: 520.524.0111 ED: 520.694.6953	Yes	Level 1 Trauma Center
VALLEYWISE HEALTH MEDICAL CENTER	2601 E. ROOSEVELT PHOENIX, AZ 85008	33° 27.450' N	112° 01.567' W	60 min	3.75 Hrs	Burn: 602.344.5726 Trauma: 602.344.5411 option #9	Yes	Level 1 Trauma Center ABA BURN CENTER
CHANDLER REGIONAL CHANDLER	1555 W FRYE RD CHANDLER, AZ 85224	33° 17.850' N	111° 32.452' W	55 MN	3.75 Hrs	MAIN: 480.728.3000 ED:	Yes	Level 1 Trauma Center
Northern Cochise Community Hospital	901 W Rex Allen Dr Wilcox, AZ 85643	32° 18.870' N	109° 50.270' W	25 MN	1 Hrs	MAIN: 520.384.8500	Yes	Level 4 TRAUMA Center

- Dip Site
- Helispot
- Division Break
- Drop Point
- Camp
- Gate
- Mobile Weather Unit
- Repeater
- Safety Zone
- Hazard
- Water Source
- Completed Burnout
- Completed Dozer Line
- Completed Hand Line
- Completed Mixed Construction Line
- Access or Improved Road
- Fire Edge
- Contained Line
- Wildfire Daily Fire Perimeter
- Medical Ground Transportation Times
- 10 Minutes
- 15 Minutes
- 20 Minutes
- 25 Minutes
- 30 Minutes
- 35 Minutes
- 40 Minutes
- 45 Minutes
- 50 Minutes
- 55 Minutes
- 60 Minutes
- 65 Minutes
- 70 Minutes
- Call other values
- Highway
- Paved Secondary
- Unpaved Minor
- Roads\_CENSUS\_USA\_Off\_Forest\_AZ
- 1 - Not Designated
- FS\_Common\_Unit\_Names
- FS\_Administrative\_Forest
- FS\_Wilderness

SWA IMT 3  
6/17/2021 2304  
Acres from FireWatch  
North American 1983 Datum, Lat/Long  
Grid

