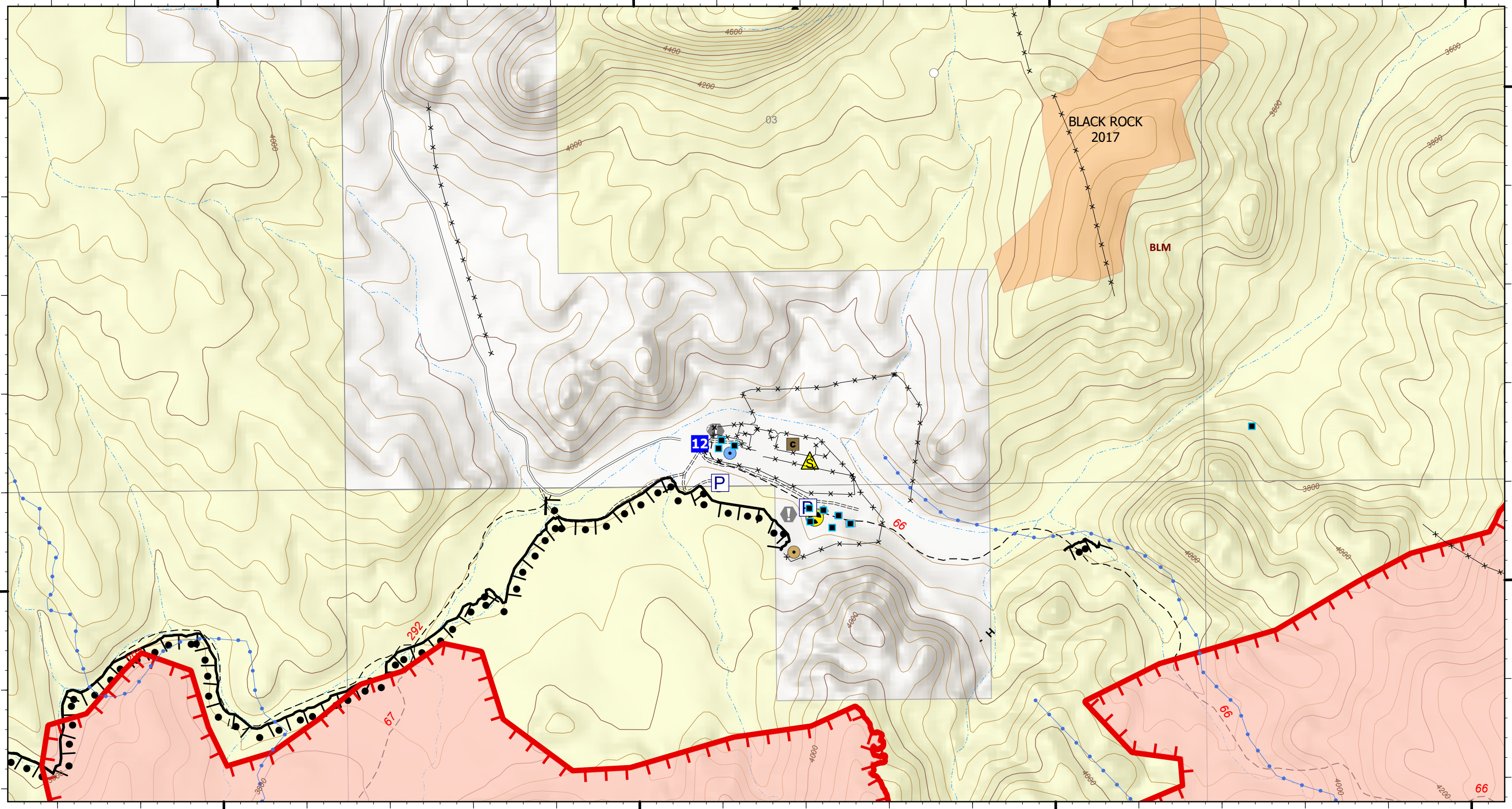


110°12.2'W 110°12'W 110°11.8'W 110°11.6'W 110°11.4'W 110°11.2'W 110°11'W 110°10.81'W 110°10.6'W

32°55.8'N 32°55.9'N 32°56'N 32°56.09'N 32°56.2'N 32°56.3'N 32°56.4'N 32°56.5'N

32°55.8'N 32°55.9'N 32°56'N 32°56.09'N 32°56.2'N 32°56.3'N 32°56.4'N 32°56.5'N



OPS - Black Rock

Pinnacle
AZCNF-00427
06/18/2021 Day

26,460 acres at 6/17/2021 13:16

Accountable Property

Pump

Logistics

Drop Point

Reference

Value at Risk

Safety

Safety Zone

Hazard

Ops Completed

Completed Burnout

Completed Hand Line

Fire Perimeter

Fire Edge

Wildfire Daily Fire Perimeter

Roads

Unpaved Minor

Trails

Secondary Paved

1 - Not Designated

Fire History

2011 - 2020

Ownership

BLM

Potential Structures

Range Improvements

Corral

Dirt Tank or Reservoir

Solar Pump

Storage Tank

Well

Pipe

Fence

6/17/2021 2133
Acres from FireWatch
North American 1983 Datum. LatLong Grid

