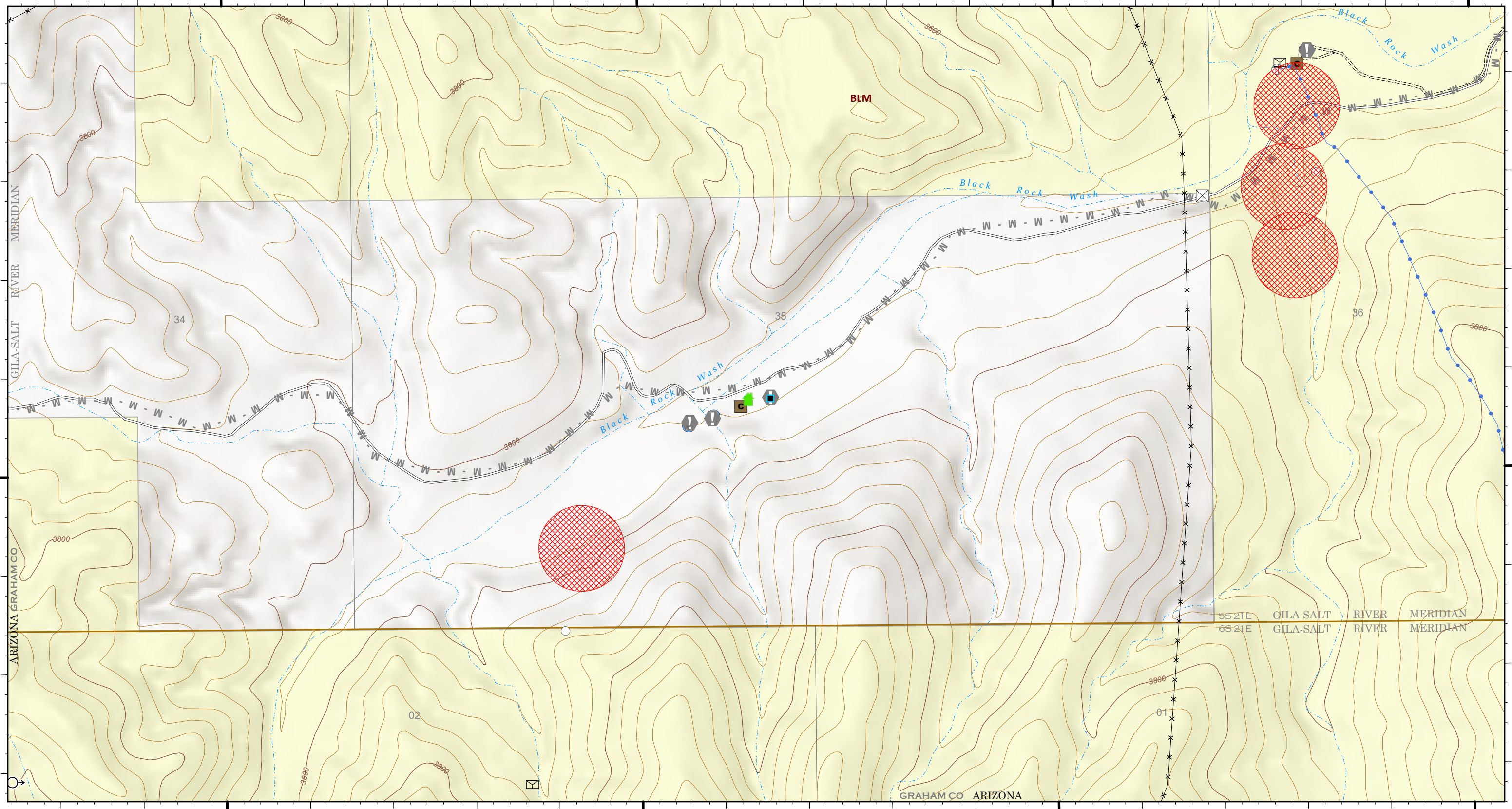


110°10.7'W 110°10.5'W 110°10.3'W 110°10.1'W 110°9.9'W 110°9.7'W 110°9.5'W 110°9.3'W 110°9.1'W 110°9'W

32°56.7'N 32°56.8'N 32°56.9'N 32°57'N 32°57.1'N 32°57.2'N 32°57.29'N 32°57.4'N

32°56.7'N 32°56.8'N 32°56.9'N 32°57'N 32°57.1'N 32°57.2'N 32°57.29'N 32°57.4'N



OPS - Glover

Pinnacle
AZCNF-00427
06/19/2021 Day

27,807 acres at 6/17/2021 20:56

- Reference**
- Value at Risk
- Ops Planned**
- M - Planned Mixed Construction Line

- Roads**
- Unpaved Minor
 - Secondary Paved
- Ownership**
- BLM

- Avoidance Areas
- Potential Structures

- Range Improvements**
- Cattleguard
 - Corral
 - Solar Pump
 - Spring
 - Storage Tank
 - Trough
 - Well

- Structure Triage**
- Defensible - Stand Alone

- Pipe
- Fence

6/18/2021 2114
Acres from IR
North American 1983 Datum. LatLong Grid

