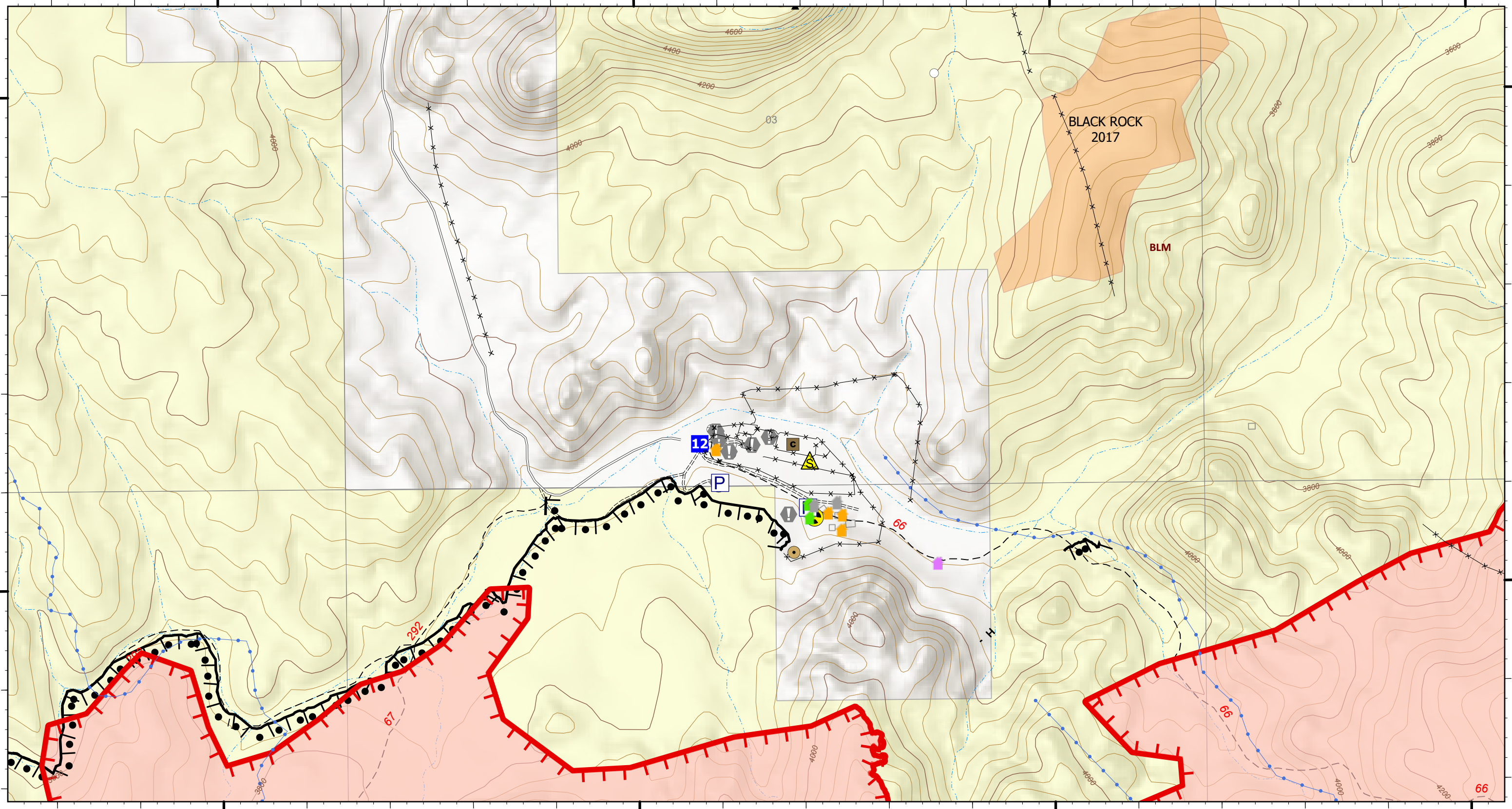


110°12.2'W 110°12'W 110°11.8'W 110°11.6'W 110°11.4'W 110°11.2'W 110°11'W 110°10.81'W 110°10.6'W

32°55.8'N 32°55.9'N 32°56'N 32°56.09'N 32°56.2'N 32°56.3'N 32°56.4'N 32°56.5'N

32°55.8'N 32°55.9'N 32°56'N 32°56.09'N 32°56.2'N 32°56.3'N 32°56.4'N 32°56.5'N



OPS - Black Rock

Pinnacle
AZCNF-00427
06/20/2021 Day

28,783 acres at 6/18/2021 21:02

- Accountable Property**
 [P] Pump
Logistics
 [Blue Square] Drop Point
Reference
 [Circle with dot] Value at Risk
Safety
 [Yellow Triangle] Safety Zone
 [Yellow Circle] Hazard

- Ops Completed**
 [Black Line] Completed Burnout
 [H] Completed Hand Line
Fire Perimeter
 [Red Line] Fire Edge
 [Red Area] Wildfire Daily Fire Perimeter
Roads
 [Grey Line] Unpaved Minor
 [Dashed Grey Line] Secondary Paved

- Trails**
 [Dashed Line] 1 - Not Designated
Fire History
 [Light Orange] 2011 - 2020
Ownership
 [Light Green] BLM

- Range Improvements**
 [Brown Square] Corral
 [Brown Circle] Dirt Tank or Reservoir
 [Circle with cross] Solar Pump
 [Blue Circle] Storage Tank
 [White Circle] Well
 [Blue Line] Pipe
 [X] Fence

- Structure Triage**
 [Green Square] Defensible - Stand Alone
 [Orange Square] Defensible - Prep and Hold
 [Purple Square] Non-Defensible - Prep and Leave
 [Grey Square] Unknown

6/19/2021 2135
Acres from IR
North American 1983 Datum. LatLong Grid

