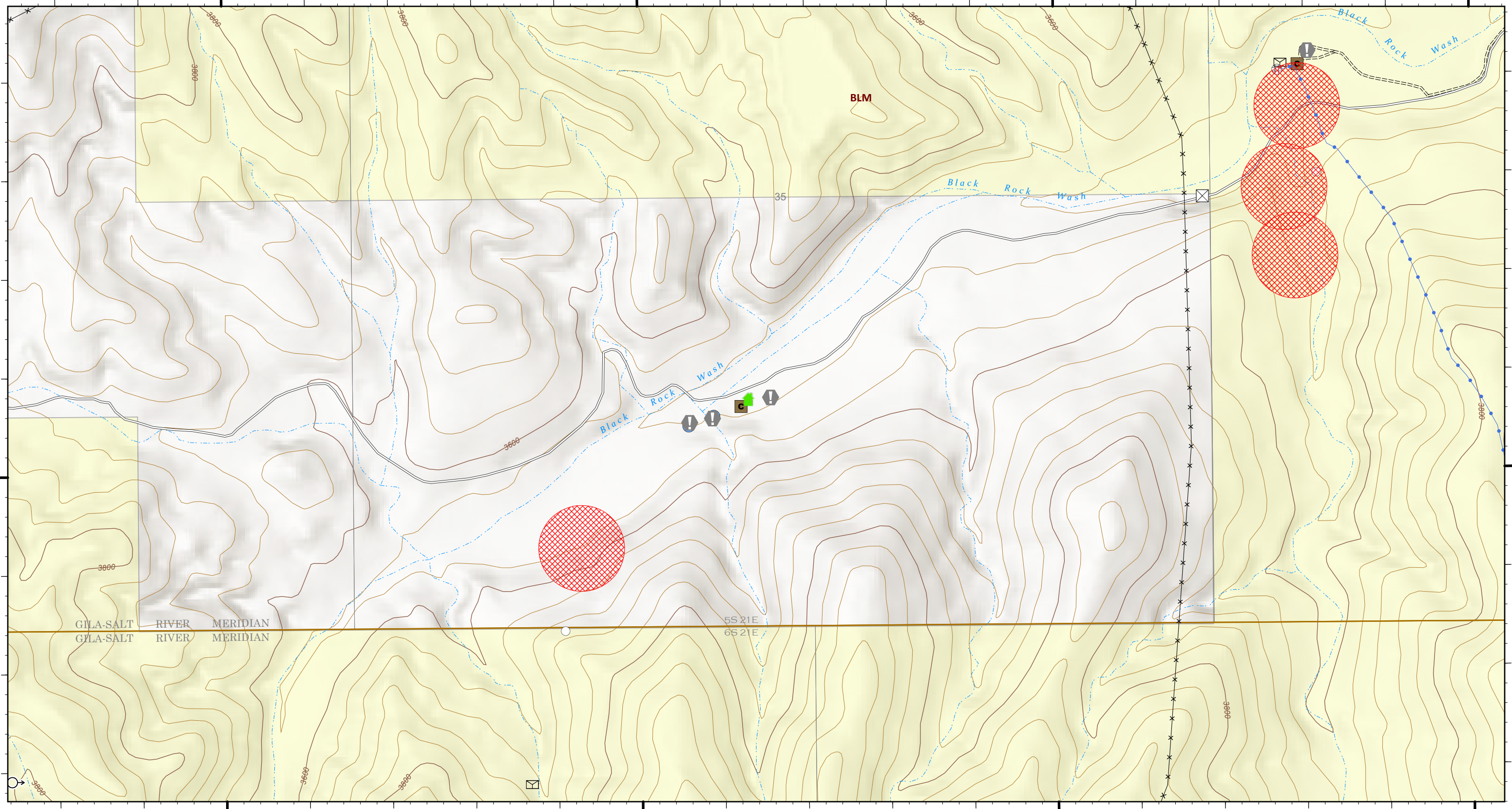


110°10.7'W 110°10.5'W 110°10.3'W 110°10.1'W 110°9.9'W 110°9.7'W 110°9.5'W 110°9.3'W 110°9.1'W 110°9'W

32°56.7'N 32°56.8'N 32°56.9'N 32°57'N 32°57.1'N 32°57.2'N 32°57.29'N 32°57.4'N

32°56.7'N 32°56.8'N 32°56.9'N 32°57'N 32°57.1'N 32°57.2'N 32°57.29'N 32°57.4'N



**OPS - Glover**

Pinnacle  
AZCNF-00427  
06/20/2021 Day

28,783 acres at 6/18/2021 21:02

**Reference**

- Value at Risk
- Roads**
- Unpaved Minor
- Secondary Paved

**Ownership**

- BLM
- Avoidance Areas

**Range Improvements**

- Cattleguard
- Corral
- Solar Pump
- Spring
- Storage Tank
- Trough
- Well

**Structure Triage**

- Pipe
- Fence
- Defensible - Stand Alone



6/19/2021 2144  
Acres from IR  
North American 1983 Datum. LatLong Grid

