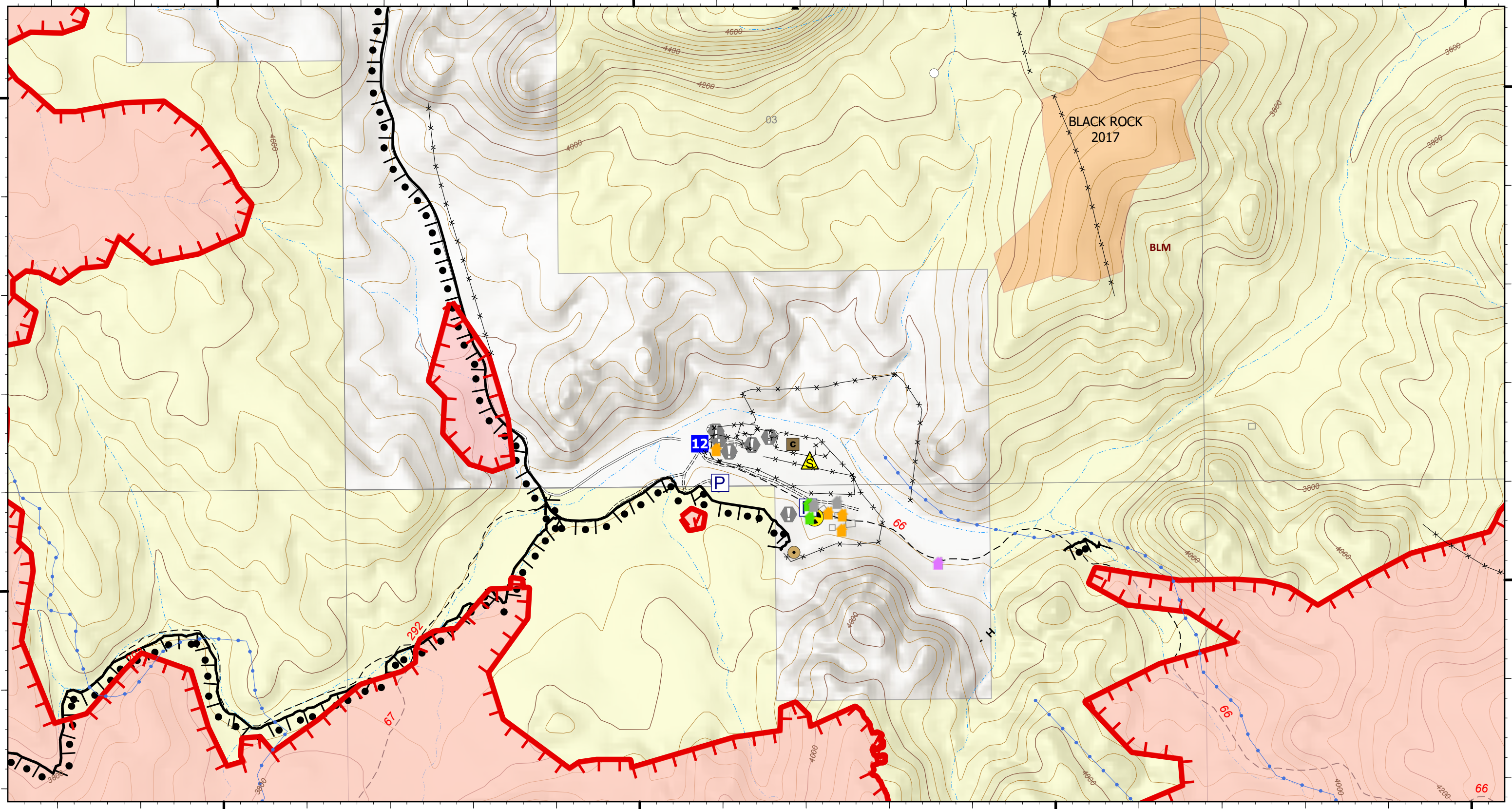


110°12.2'W 110°12'W 110°11.8'W 110°11.6'W 110°11.4'W 110°11.2'W 110°11'W 110°10.81'W 110°10.6'W

32°55.8'N 32°55.9'N 32°56'N 32°56.09'N 32°56.2'N 32°56.3'N 32°56.4'N 32°56.5'N

32°55.8'N 32°55.9'N 32°56'N 32°56.09'N 32°56.2'N 32°56.3'N 32°56.4'N 32°56.5'N



OPS - Black Rock

Pinnacle
AZCNF-00427
06/21/2021 Day

31,715 acres at 6/19/2021 19:54

- Accountable Property**
- Pump
- Logistics**
- Drop Point
- Reference**
- Value at Risk
- Safety**
- Safety Zone
 - Hazard

- Ops Completed**
- Completed Burnout
 - Completed Hand Line
- Fire Perimeter**
- Fire Edge
 - Wildfire Daily Fire Perimeter
- Roads**
- Unpaved Minor
 - Secondary Paved

- Trails**
- 1 - Not Designated
- Fire History**
- 2011 - 2020
- Ownership**
- BLM

- Range Improvements**
- Corral
 - Dirt Tank or Reservoir
 - Solar Pump
 - Storage Tank
 - Well
 - Pipe
 - Fence

- Structure Triage**
- Defensible - Stand Alone
 - Defensible - Prep and Hold
 - Non-Defensible - Prep and Leave
 - Unknown

SW IMT3
6/20/2021 2155
Acres from IR
North American 1983 Datum. LatLong Grid

