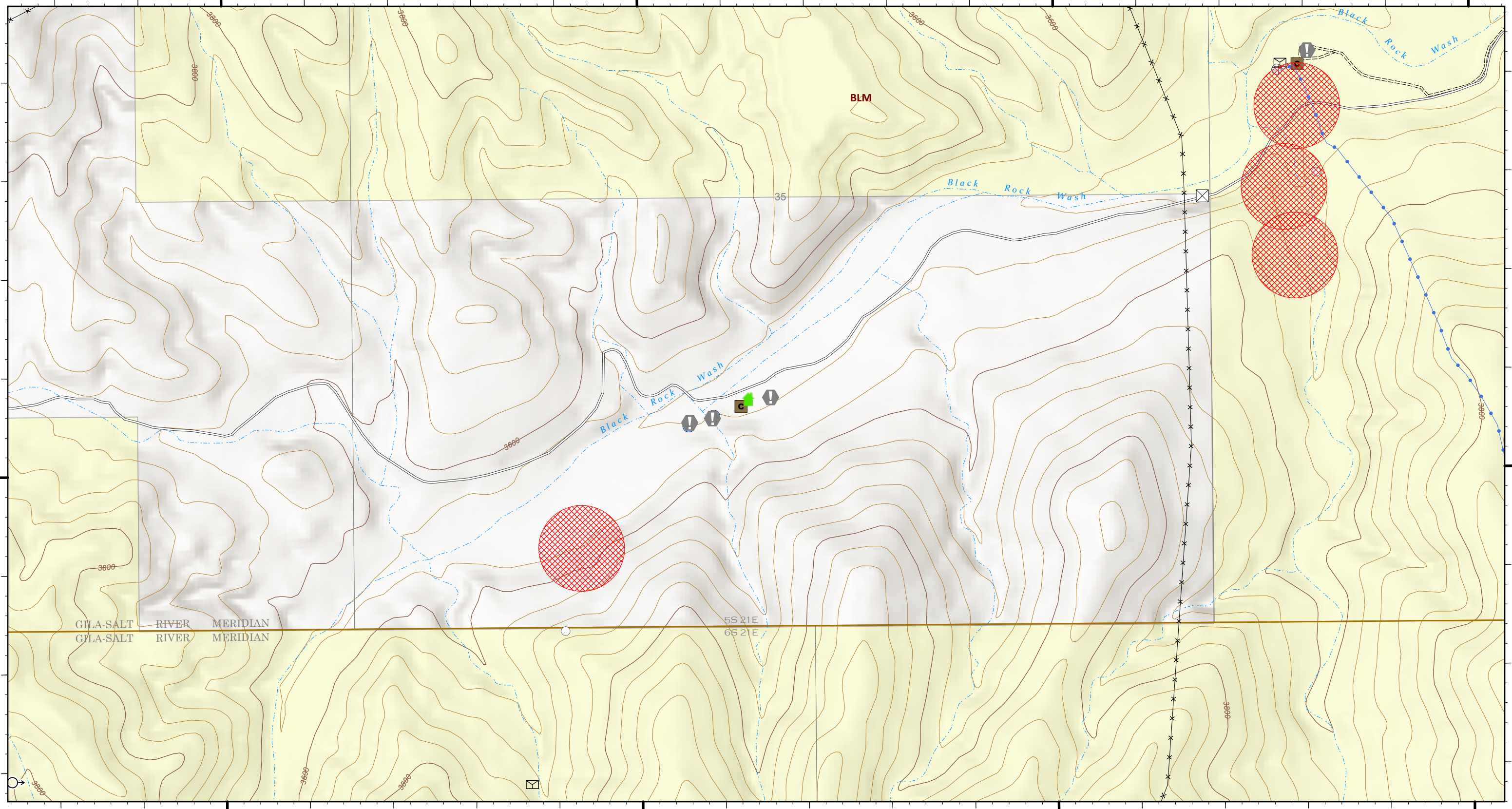


110°10.7'W 110°10.5'W 110°10.3'W 110°10.1'W 110°9.9'W 110°9.7'W 110°9.5'W 110°9.3'W 110°9.1'W 110°9'W

32°56.7'N 32°56.8'N 32°56.9'N 32°57'N 32°57.1'N 32°57.2'N 32°57.29'N 32°57.4'N

32°56.7'N 32°56.8'N 32°56.9'N 32°57'N 32°57.1'N 32°57.2'N 32°57.29'N 32°57.4'N



OPS - Glover

Pinnacle
AZCNF-00427
06/21/2021 Day

31,715 acres at 6/19/2021 19:54

Reference

- Value at Risk
- Roads**
- Unpaved Minor
- Secondary Paved

Ownership

- BLM
- Avoidance Areas

Range Improvements

- Cattleguard
- Corral
- Solar Pump
- Spring
- Storage Tank
- Trough
- Well

Pipe

- Pipe
- Fence

Structure Triage

- Defensible - Stand Alone



SW IMT3
6/20/2021 2117
Acres from IR
North American 1983 Datum. LatLong Grid

