

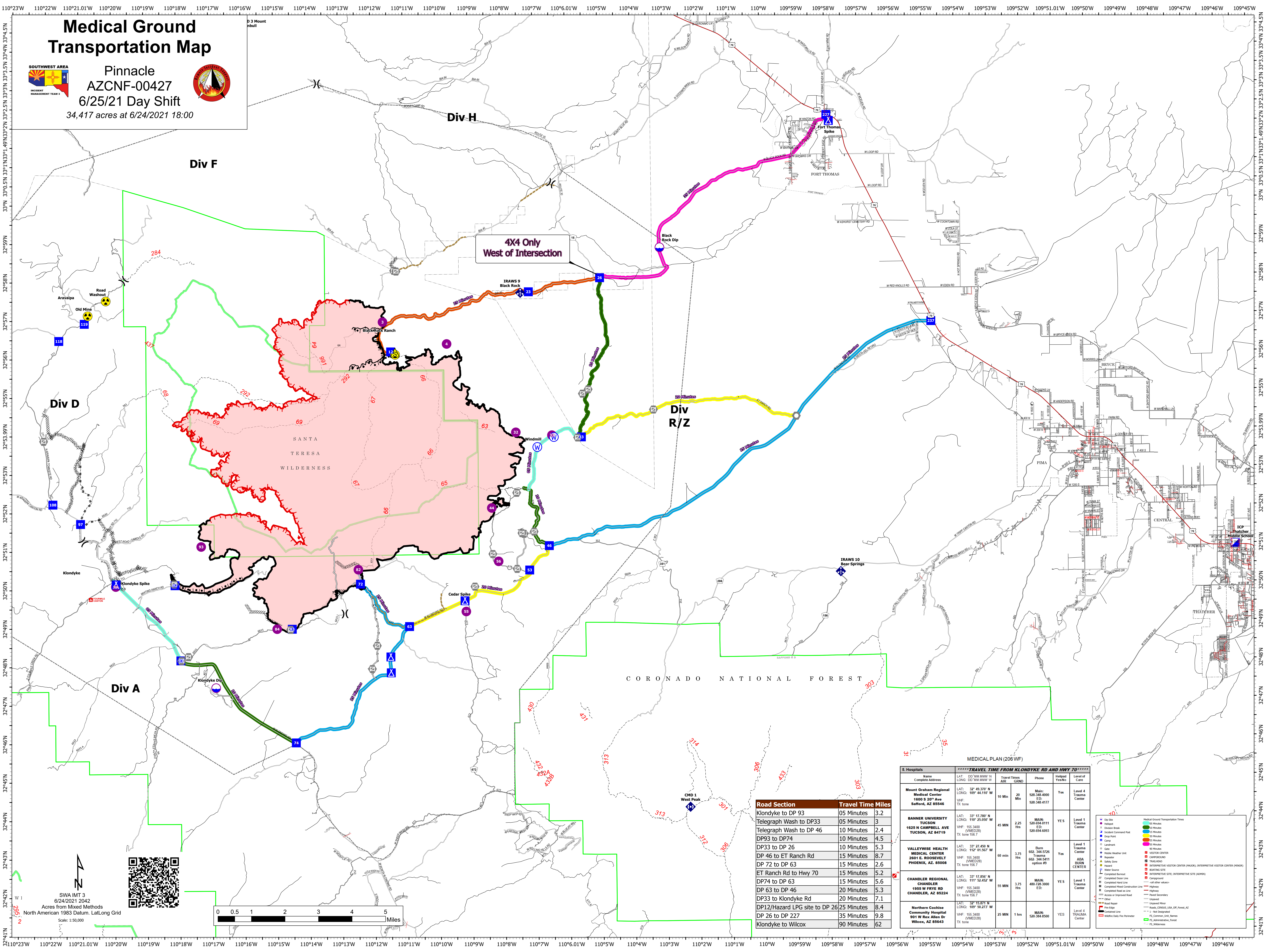
Medical Ground Transportation Map



Pinnacle
AZCNF-00427
6/25/21 Day Shift
 34,417 acres at 6/24/2021 18:00



3 Mount nbul



284

4X4 Only
West of Intersection

Div R/Z

SANTA TERESA WILDERNESS

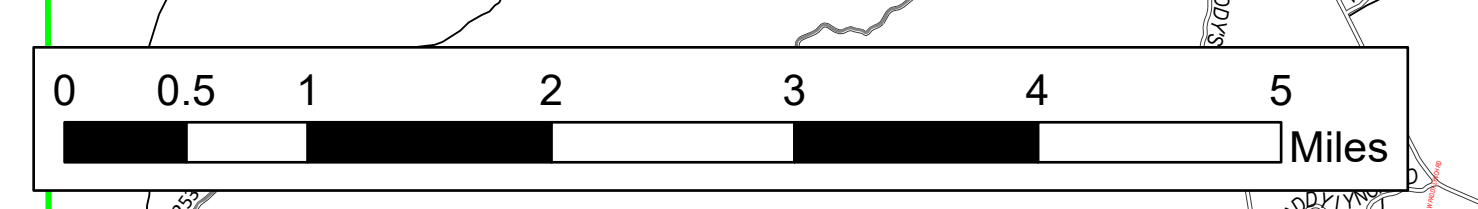
CORONADO NATIONAL FOREST

MEDICAL PLAN (206 WF)

*****TRAVEL TIME FROM KLONDYKE RD AND HWY 70*****								
Hospitals	Name	Complete Address	LAT: DD MM MMM W	LONG: DD MM MMM W	Travel Times AIR	Phone	Helped Yes/No	Level of Care
	Mount Graham Regional Medical Center	1600 S 20th Ave Safford, AZ 85546	32° 40.330' N	109° 44.110' W	10 Min 20 Min	Main: 520-348-4000 E.D.: 520-348-4177	Yes	Level 4 Trauma Center
	BANNER UNIVERSITY TUCSON	1625 N CAMPBELL AVE TUCSON, AZ 84719	32° 17.780' N	110° 25.050' W	45 MIN	Main: 520-634-0111 E.D.: 520-634-0953	YES	Level 1 Trauma Center
	VALLEYWISE HEALTH MEDICAL CENTER	2001 E. ROOSEVELT PHOENIX, AZ 85008	33° 27.450' N	112° 01.567' W	60 min	Burn 602-344-5726 Trauma 602-344-5411 option #9	Yes	Level 1 Trauma Center ABA BUEN CENTER
	CHANDLER REGIONAL CHANDLER	1855 W FRYE RD CHANDLER, AZ 85224	33° 17.895' N	111° 52.452' W	55 MIN	Main: 480-728-3000 E.D.:	YES	Level 1 Trauma Center
	Northern Cochise Community Hospital	501 W Max Allen Dr Wixom, AZ 85643	32° 12.271' N	109° 50.273' W	25 MIN	Main: 520-384-8500	YES	Level 4 Trauma Center

Road Section	Travel Time	Miles
Klondyke to DP 93	05 Minutes	3.2
Telegraph Wash to DP33	05 Minutes	3
Telegraph Wash to DP 46	10 Minutes	2.4
DP93 to DP74	10 Minutes	4.5
DP33 to DP 26	10 Minutes	5.3
DP 46 to ET Ranch Rd	15 Minutes	8.7
DP 72 to DP 63	15 Minutes	2.6
ET Ranch Rd to Hwy 70	15 Minutes	5.2
DP74 to DP 63	15 Minutes	5.6
DP 63 to DP 46	20 Minutes	5.3
DP33 to Klondyke Rd	20 Minutes	7.1
DP12/Hazard LPG site to DP 26	25 Minutes	8.4
DP 26 to DP 227	35 Minutes	9.8
Klondyke to Wilcox	90 Minutes	62

- Medical Ground Transportation Times
- 0-5 Minutes
- 5-10 Minutes
- 10-15 Minutes
- 15-20 Minutes
- 20-30 Minutes
- 30-45 Minutes
- 45-60 Minutes
- 60-90 Minutes
- 90+ Minutes
- Clay Site
- Disposal
- Disposal Basin
- Disposal Command Post
- Drop Point
- Camp
- Landmark
- Gate
- Medical Weather Unit
- Regulator
- Safety Zone
- Water Source
- Completed Road
- Completed Road Line
- Completed Road as is Line
- Access on Proposed Road
- Other
- Road Repair
- Water Line
- Water Line with Permit
- Medical Ground Transportation Times
- 0-5 Minutes
- 5-10 Minutes
- 10-15 Minutes
- 15-20 Minutes
- 20-30 Minutes
- 30-45 Minutes
- 45-60 Minutes
- 60-90 Minutes
- 90+ Minutes
- Clay Site
- Disposal
- Disposal Basin
- Disposal Command Post
- Drop Point
- Camp
- Landmark
- Gate
- Medical Weather Unit
- Regulator
- Safety Zone
- Water Source
- Completed Road
- Completed Road Line
- Completed Road as is Line
- Access on Proposed Road
- Other
- Road Repair
- Water Line
- Water Line with Permit
- Medical Ground Transportation Times
- 0-5 Minutes
- 5-10 Minutes
- 10-15 Minutes
- 15-20 Minutes
- 20-30 Minutes
- 30-45 Minutes
- 45-60 Minutes
- 60-90 Minutes
- 90+ Minutes
- Clay Site
- Disposal
- Disposal Basin
- Disposal Command Post
- Drop Point
- Camp
- Landmark
- Gate
- Medical Weather Unit
- Regulator
- Safety Zone
- Water Source
- Completed Road
- Completed Road Line
- Completed Road as is Line
- Access on Proposed Road
- Other
- Road Repair
- Water Line
- Water Line with Permit



SWA/MT 3
 6/24/2021 2042
 Acres from Mixed Methods
 North American 1983 Datum, Lat,Long Grid
 Scale: 1:50,000