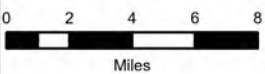
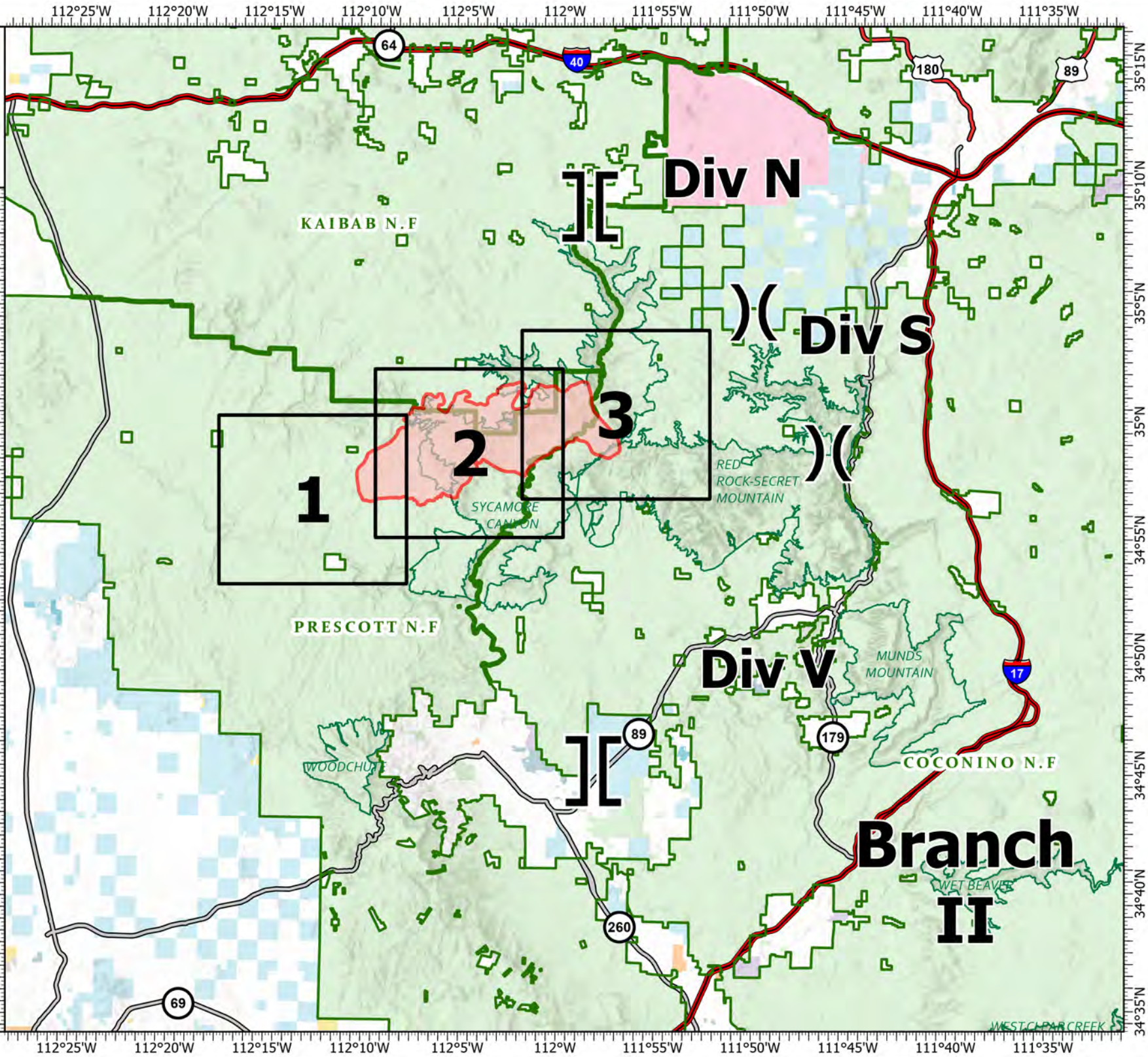


**IAP**  
 Rafael  
 AZPNF000863  
 6/23/2021 Day  
 26,747 acres at 6/22/2021  
 1830  
 Index Page

- X Division Break
- JL Branch Break
- Wildfire Daily Fire Perimeter
- Bureau of Land Management
- County
- Indian Lands
- Local or State Parks
- Military
- National Park Service
- Other Federal
- Private
- State
- State Wildlife Area
- US Forest Service
- Wilderness
- Interstate Highway
- US Highway
- State Highway

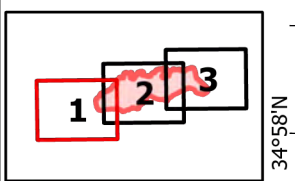


S MacDonald  
 6/22/2021 2100  
 Acres from IR and GPS  
 North American 1983 Datum.  
 LatLong Grid

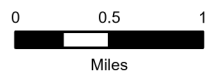




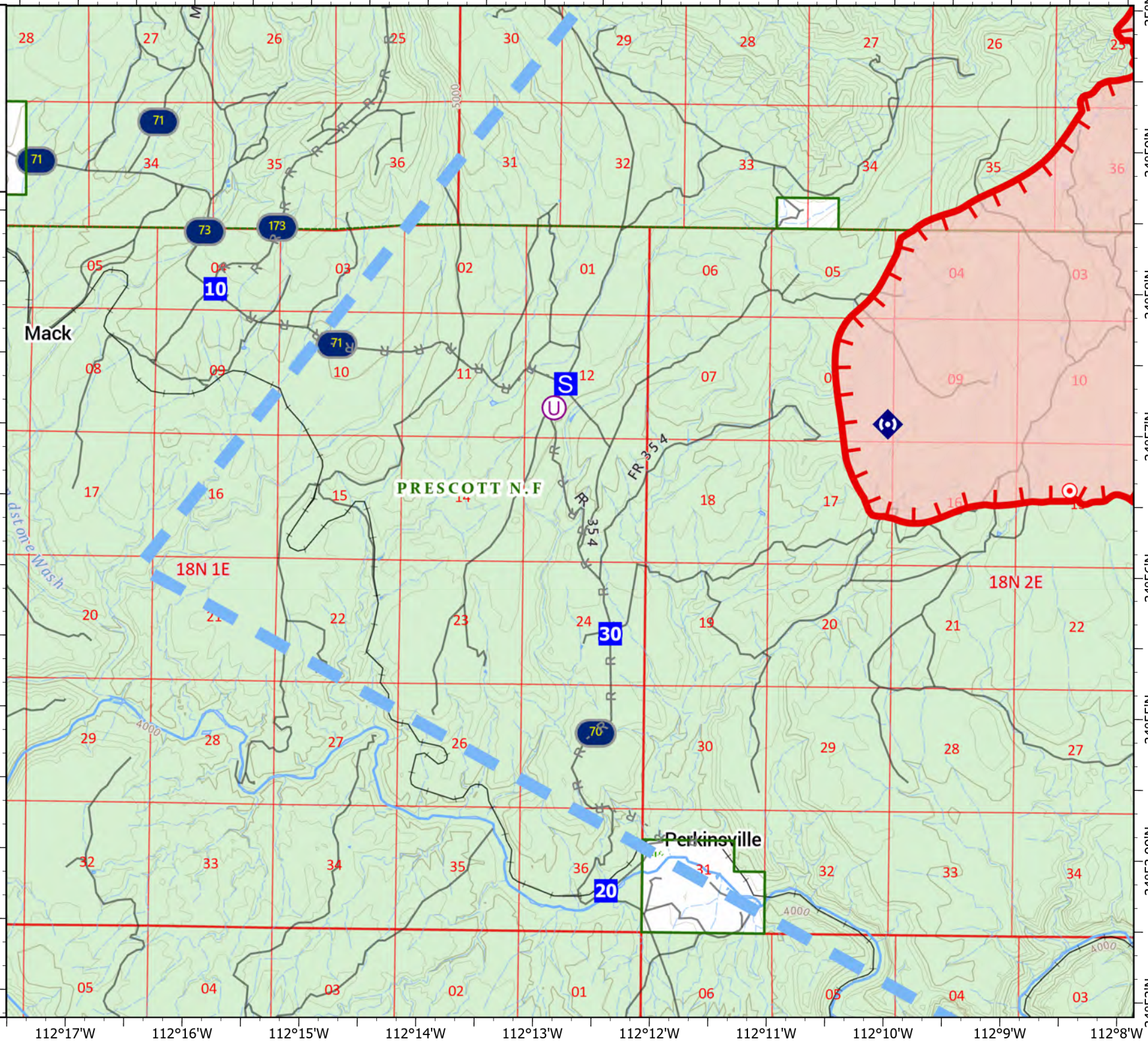
**IAP**  
 Rafael  
 AZPNF000863  
 6/23/2021 Day  
 26,747 acres at 6/22/2021  
 1830  
 Page 1 of 3



- Unimproved Landing Area
- Drop Point
- Staging Area
- Hot Spot - Spot Fire
- Repeater
- Planned Road as Line
- Temporary Flight Restriction
- Fire Edge
- Wildfire Daily Fire Perimeter
- US Forest Service

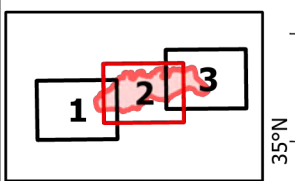


S MacDonald  
 6/22/2021 2133  
 Acres from IR and GPS  
 North American 1983 Datum.  
 LatLong Grid

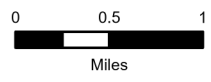




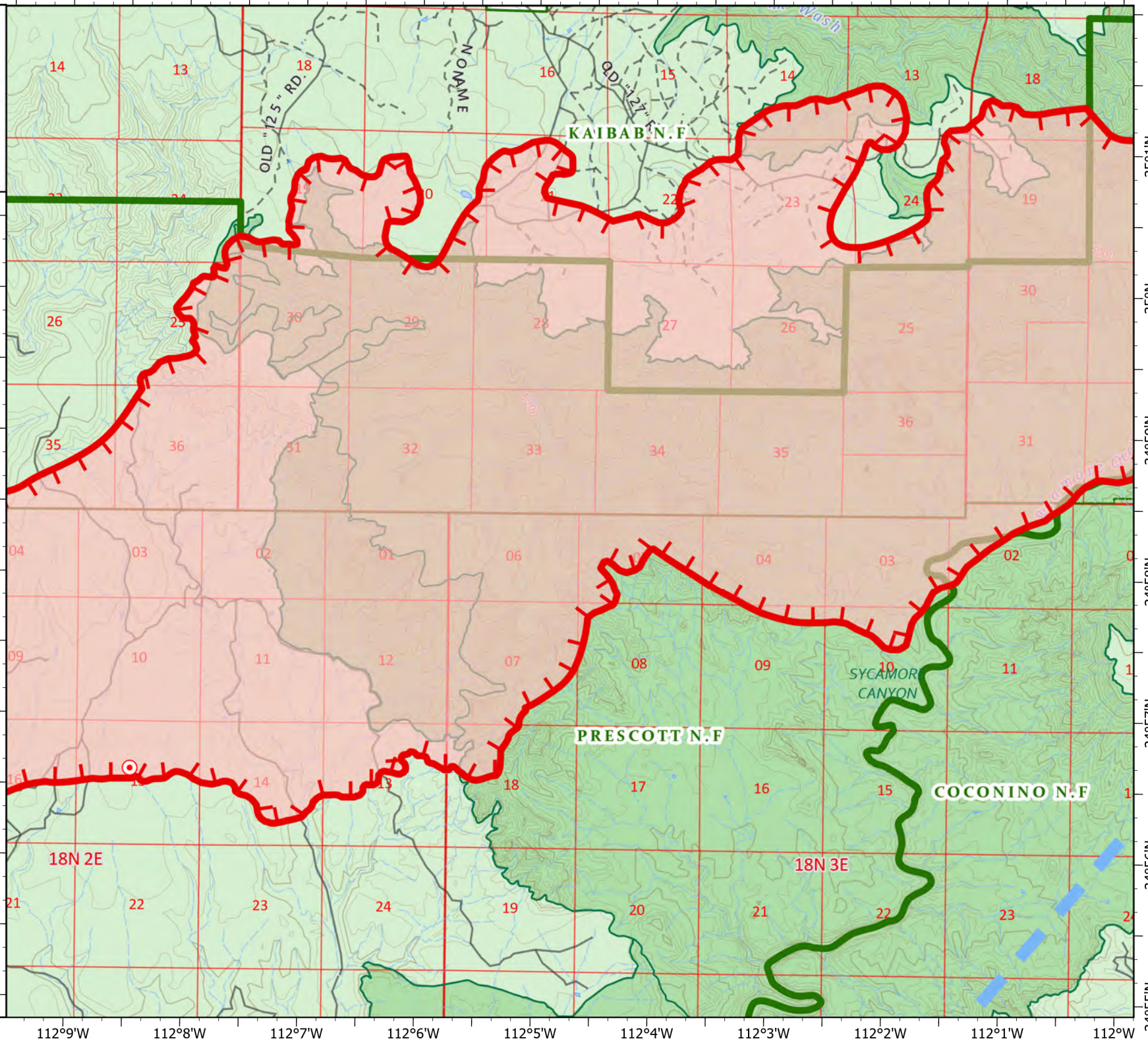
**IAP**  
 Rafael  
 AZPNF000863  
 6/23/2021 Day  
 26,747 acres at 6/22/2021  
 1830  
 Page 2 of 3



- Hot Spot - Spot Fire
- Temporary Flight Restriction
- Fire Edge
- Wildfire Daily Fire Perimeter
- Wilderness
- US Forest Service

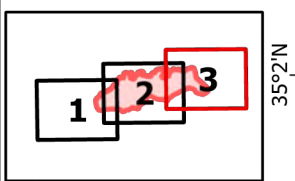


S MacDonald  
 6/22/2021 2134  
 Acres from IR and GPS  
 North American 1983 Datum.  
 LatLong Grid

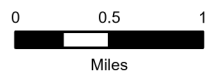




**IAP**  
 Rafael  
 AZPNF000863  
 6/23/2021 Day  
 26,747 acres at 6/22/2021  
 1830  
 Page 3 of 3



- Hot Spot - Spot Fire
- Value at Risk
- Temporary Flight Restriction
- Fire Edge
- Wildfire Daily Fire Perimeter
- Wilderness
- US Forest Service



S MacDonald  
 6/22/2021 2135  
 Acres from IR and GPS  
 North American 1983 Datum.  
 LatLong Grid

