

# OPERATIONS

DIV B

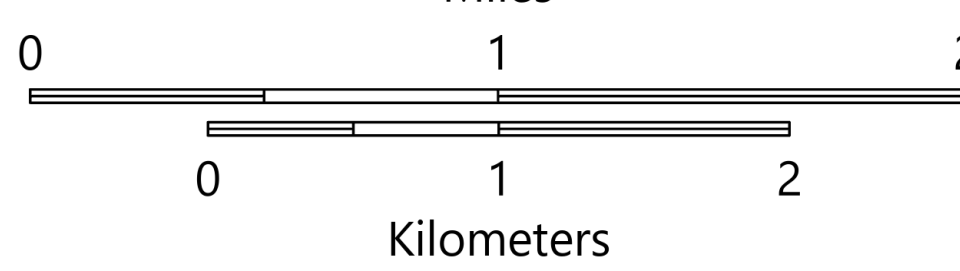
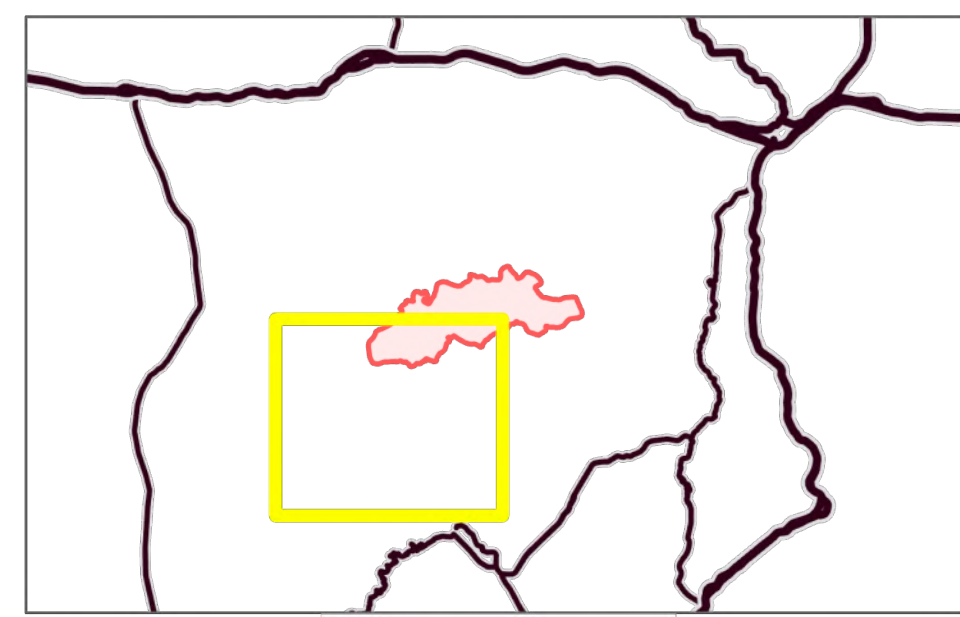
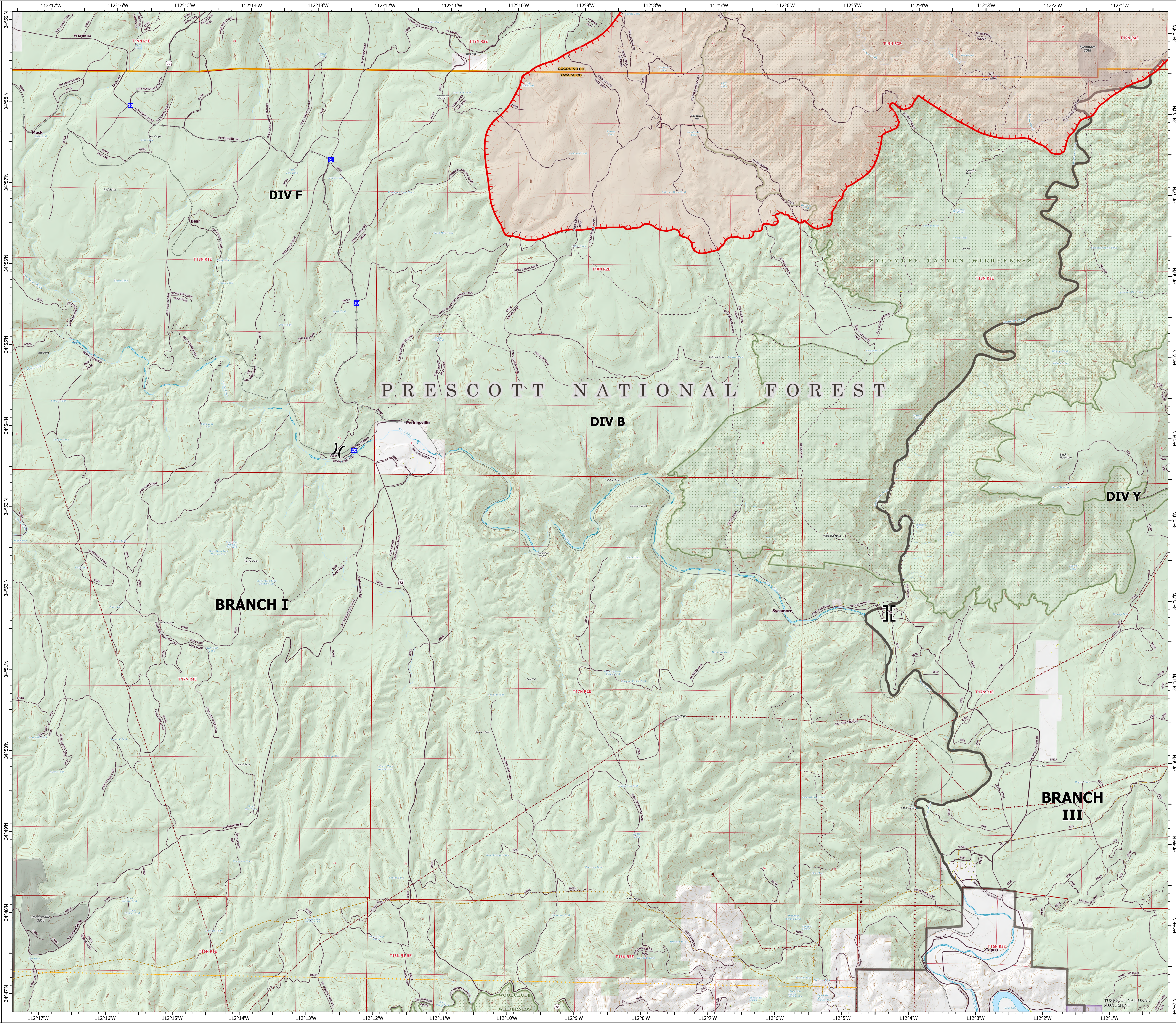
Rafael

AZ-PNF-863

6/24/2021

34,949 acres at 6/23/21 0254 hrs

- ( ) Division Break
- ⌋ Branch Break
- Drop Point
- Ⓢ Staging Area
- Structure
- Planned Road as Line
- Fire Edge
- Paved Roads
- Dirt (Not Paved)
- USFS Road
- - - Trail
- Railroad
- ▭ Wildfire Daily Fire Perimeter
- FS Common Unit Names
- Substation
- Transmission Line
- Natural Gas Liquid Pipeline
- Oil and Natural Gas Pipeline
- Fire History
- ▭ Administrative FS Boundary
- ▭ Federal Wilderness Boundary
- ▭ County Boundary
- ▭ National Park Service
- ▭ Private
- ▭ State
- ▭ US Forest Service



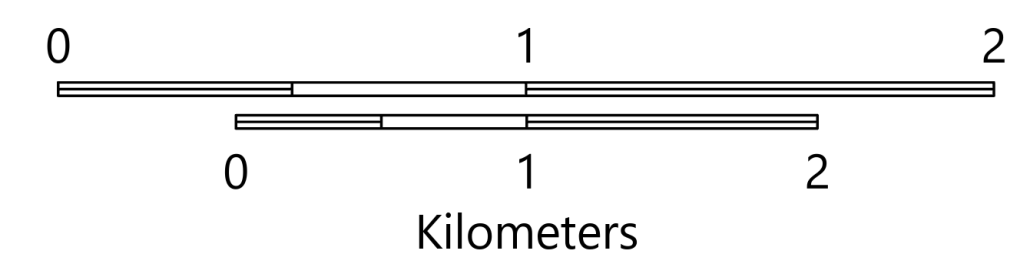
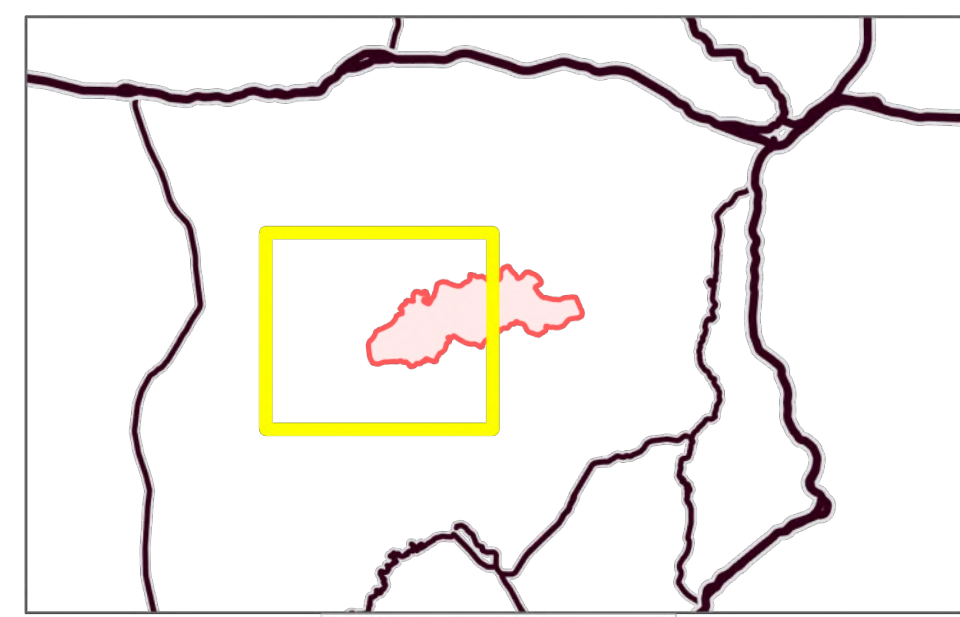
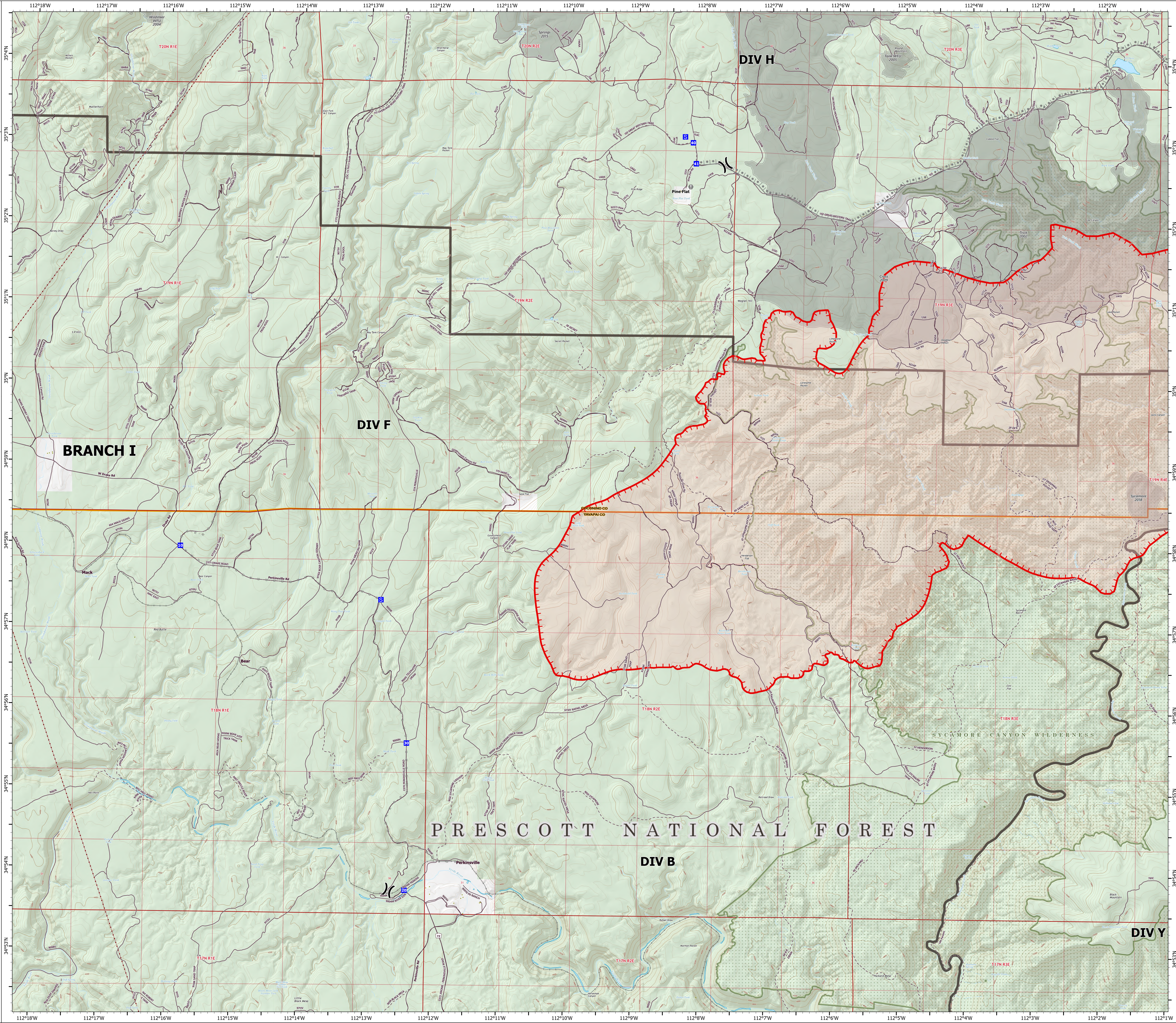
# OPERATIONS

DIV F

Rafael  
AZ-PNF-863  
6/24/2021

34,949 acres at 6/23/21 0254 hrs

- ( ) Division Break
- Drop Point
- S Staging Area
- Value at Risk
- Structure
- ▭ Planned Burnout
- Planned Road as Line
- Fire Edge
- Paved Roads
- Dirt (Not Paved)
- USFS Road
- Trail
- Railroad
- ▭ Wildfire Daily Fire Perimeter
- FS Common Unit Names
- Transmission Line
- Fire History
- ▭ Administrative FS Boundary
- ▭ Federal Wilderness Boundary
- ▭ County Boundary
- ▭ Private
- ▭ US Forest Service



# OPERATIONS

DIV H

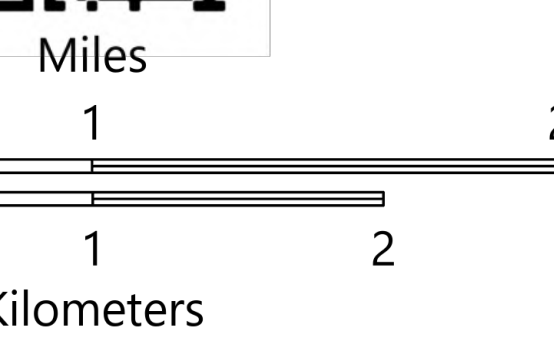
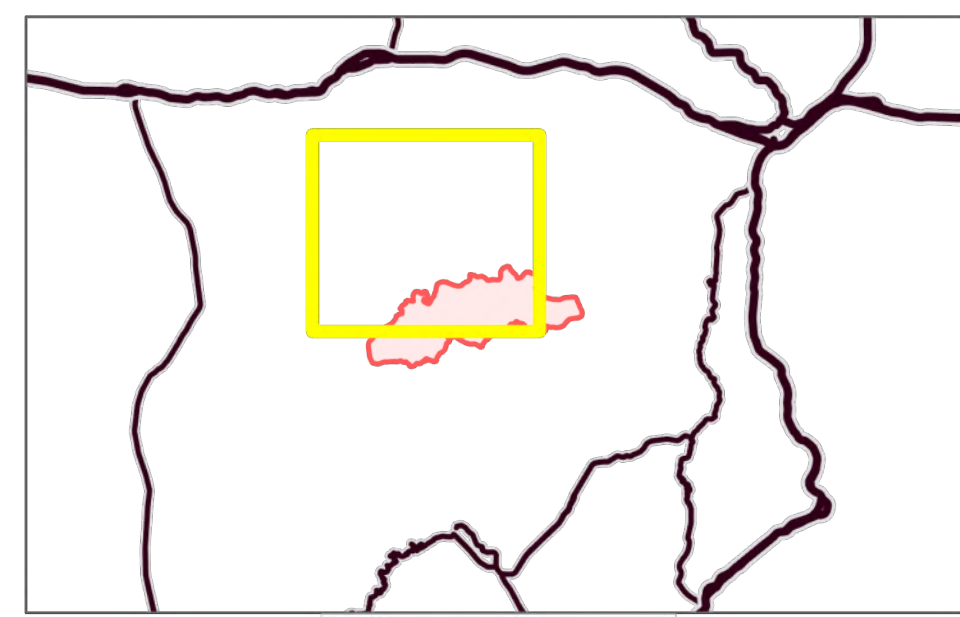
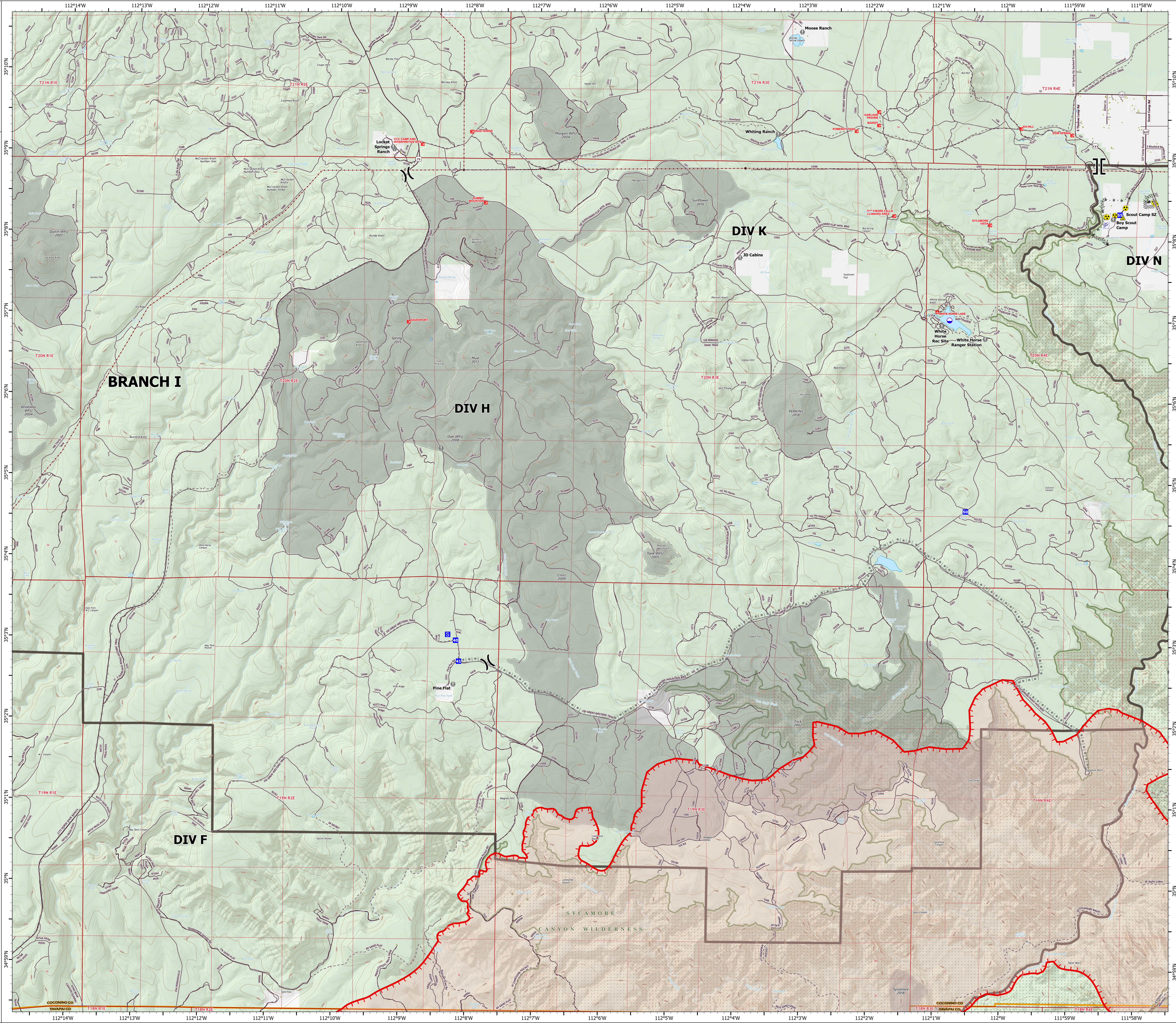
Rafael

AZ-PNF-863

6/24/2021

34,949 acres at 6/23/21 0254 hrs

- Dip Site
- Division Break
- Branch Break
- Drop Point
- Staging Area
- Value at Risk
- Safety Zone
- Hazard
- Pump
- Campground
- Trailhead
- Structure
- Completed Dozer Line
- Completed Hand Line
- Completed Road as Line
- Planned Burnout
- Planned Road as Line
- Fire Edge
- Paved Roads
- Dirt (Not Paved)
- USFS Road
- Trail
- Wildfire Daily Fire Perimeter
- FS Common Unit Names
- Substation
- Transmission Line
- Fire History
- Administrative FS Boundary
- Federal Wilderness Boundary
- County Boundary
- Private
- US Forest Service



# OPERATIONS

DIV K

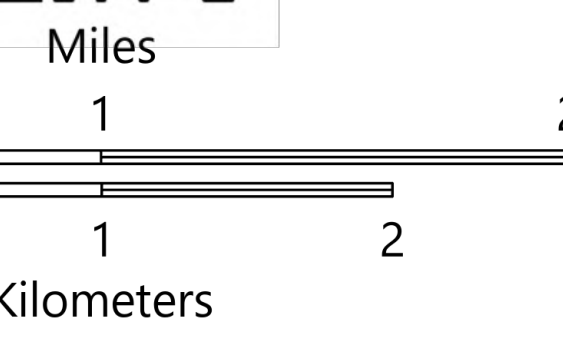
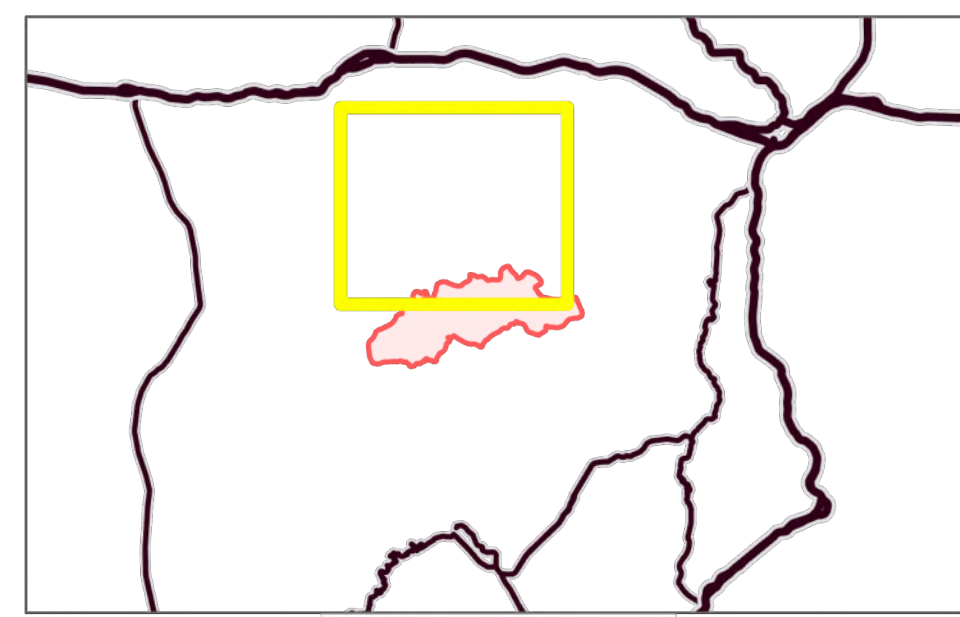
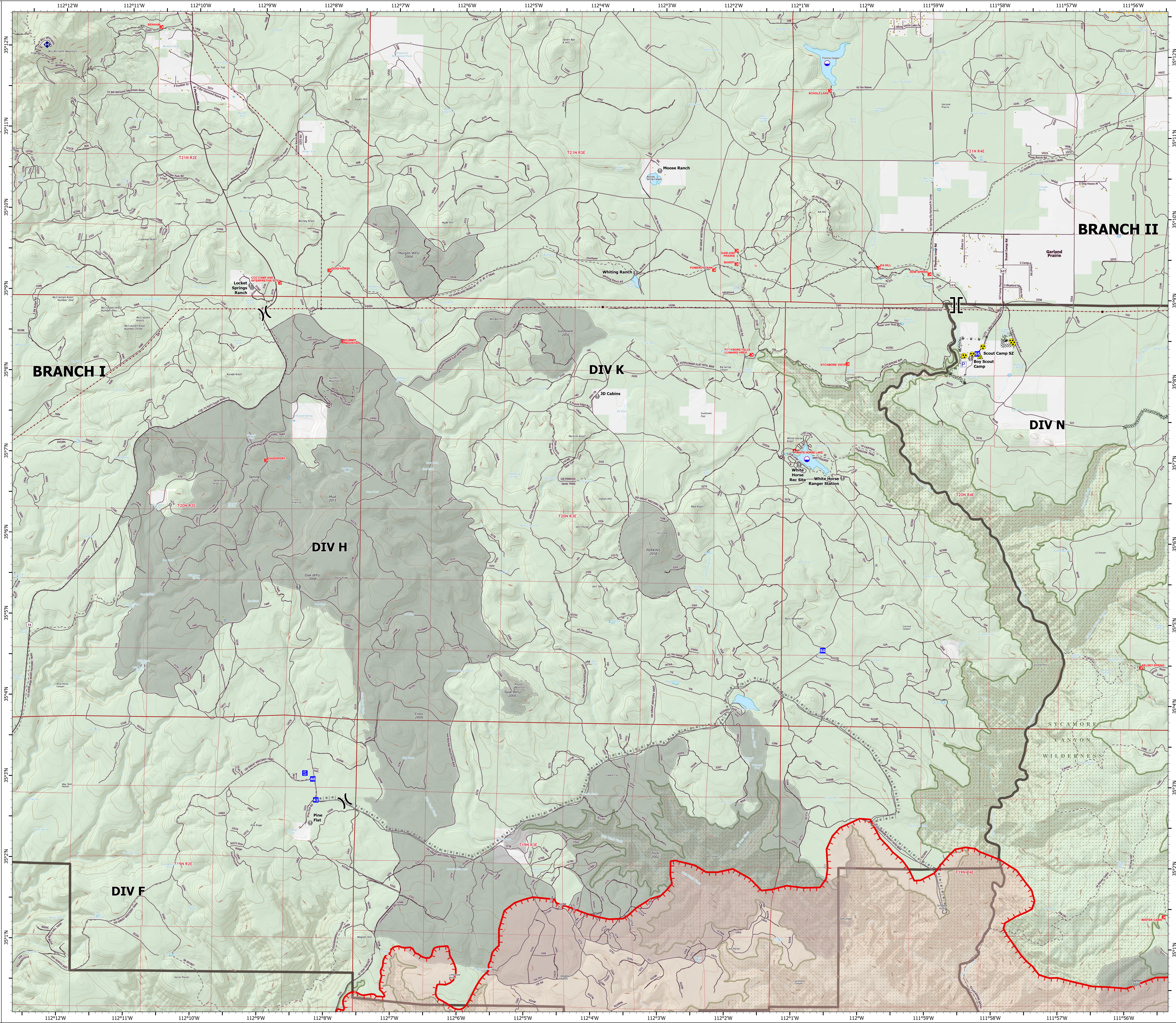
Rafael

AZ-PNF-863

6/24/2021

34,949 acres at 6/23/21 0254 hrs

- Dip Site
- Division Break
- Branch Break
- Drop Point
- Staging Area
- Value at Risk
- Repeater
- Safety Zone
- Hazard
- Pump
- Campground
- Trailhead
- Structure
- Completed Dozer Line
- Completed Hand Line
- Completed Road as Line
- Planned Burnout
- Planned Road as Line
- Fire Edge
- Paved Roads
- Dirt (Not Paved)
- USFS Road
- Trail
- Wildfire Daily Fire Perimeter
- FS Common Unit Names
- Substation
- Transmission Line
- Natural Gas Liquid Pipeline
- Fire History
- Administrative FS Boundary
- Federal Wilderness Boundary
- County Boundary
- Private
- US Forest Service



# OPERATIONS

DIV N

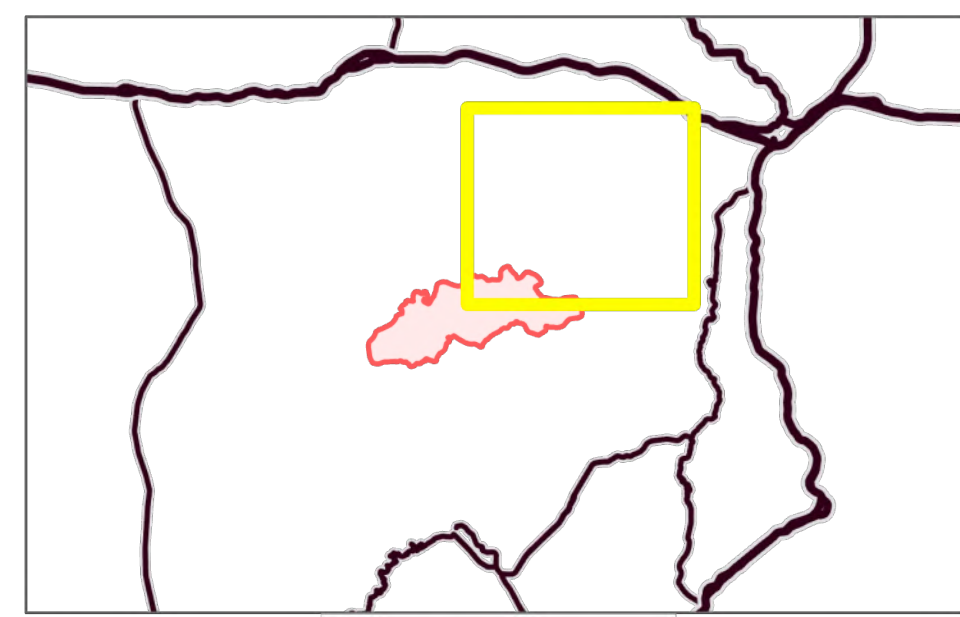
Rafael

AZ-PNF-863

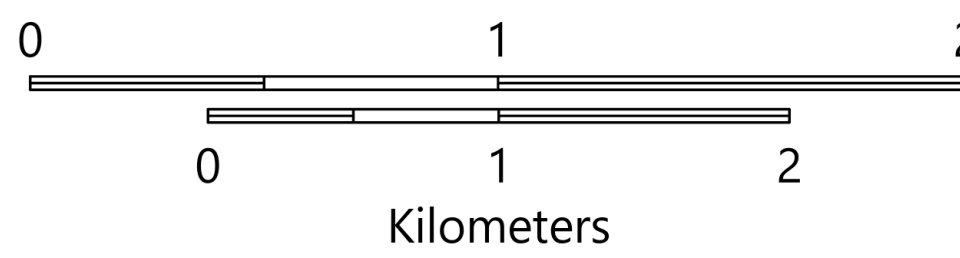
6/24/2021

34,949 acres at 6/23/21 0254 hrs

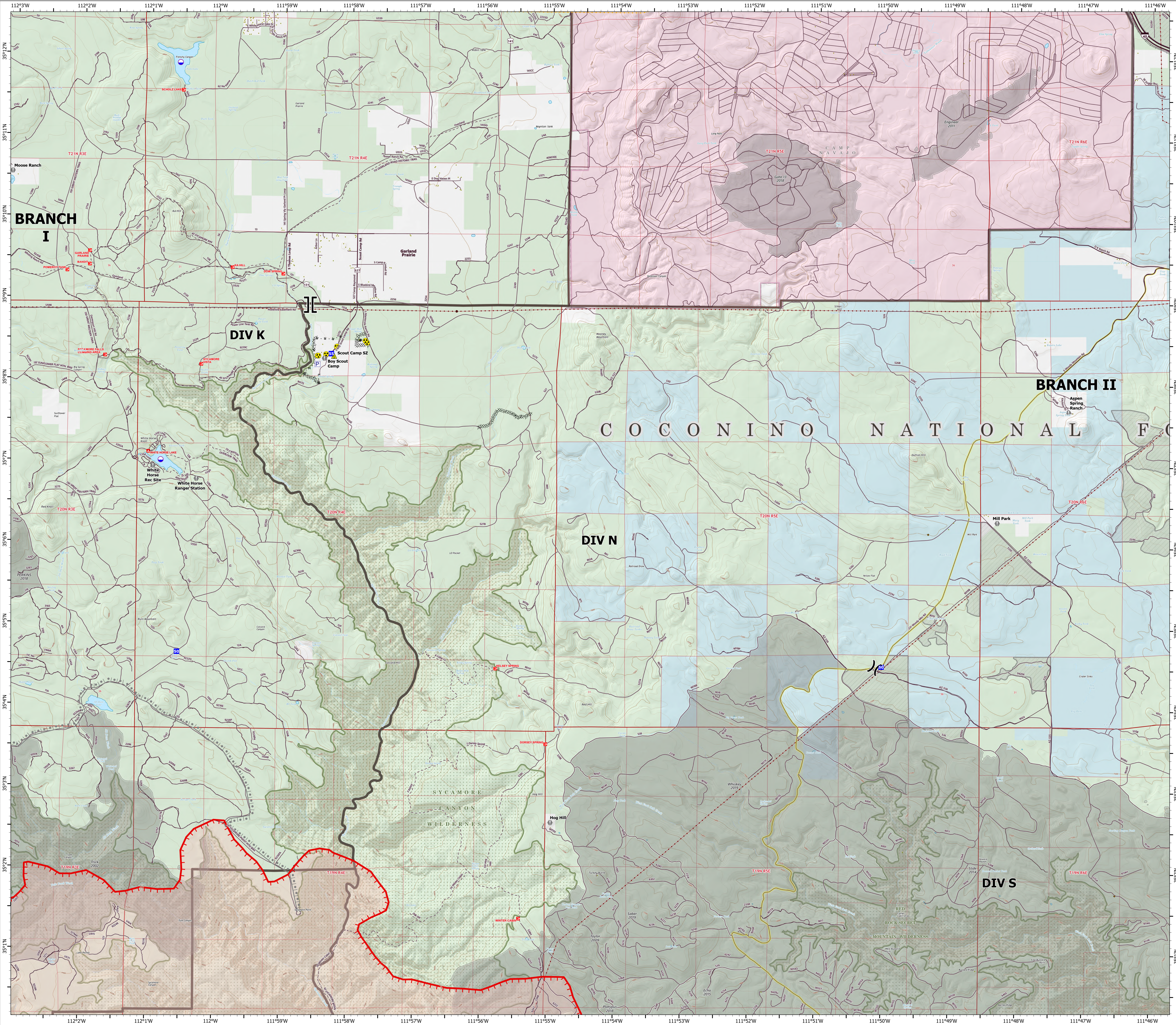
- Dip Site
- Division Break
- Branch Break
- Drop Point
- Value at Risk
- Safety Zone
- Hazard
- Pump
- Campground
- Trailhead
- Structure
- Completed Dozer Line
- Completed Hand Line
- Completed Road as Line
- Planned Burnout
- Fire Edge
- Primary Highway
- Paved Roads
- Dirt (Not Paved)
- USFS Road
- Woody Mtn Rd
- Trail
- Railroad
- Wildfire Daily Fire Perimeter
- FS Common Unit Names
- Substation
- Transmission Line
- Natural Gas Liquid Pipeline
- Oil and Natural Gas Well
- Fire History
- Fuel Treatment
- Administrative FS Boundary
- Federal Wilderness Boundary
- County Boundary
- Military
- Private
- State
- US Forest Service



Miles



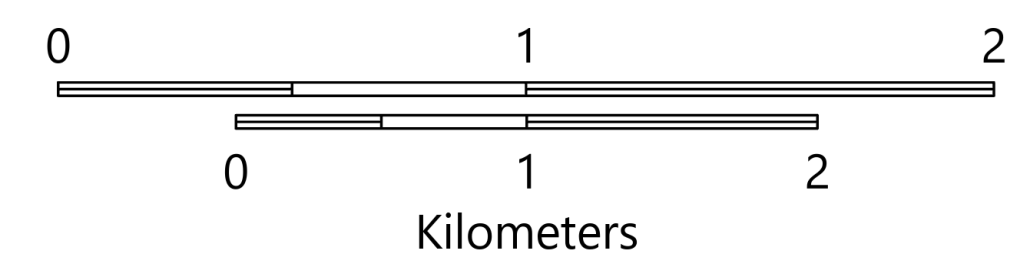
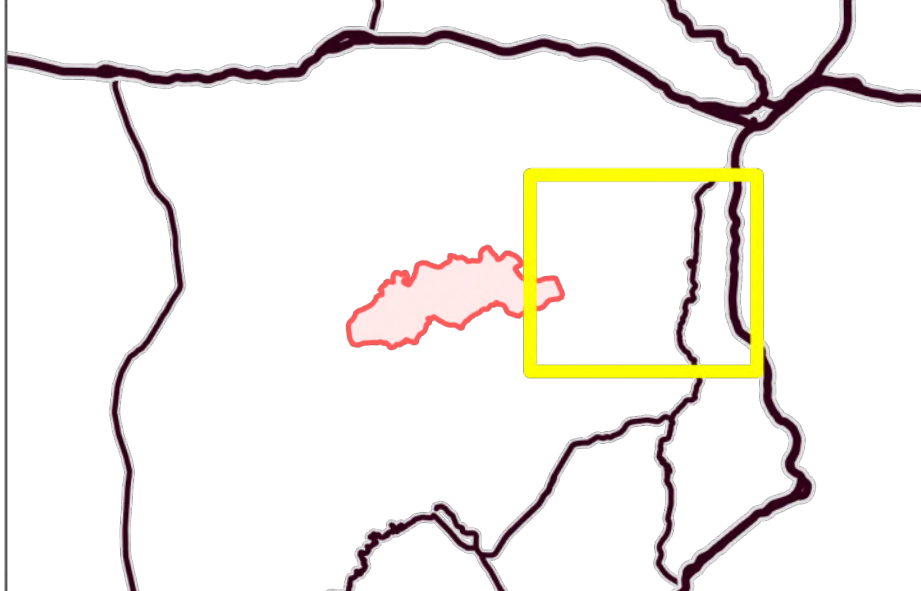
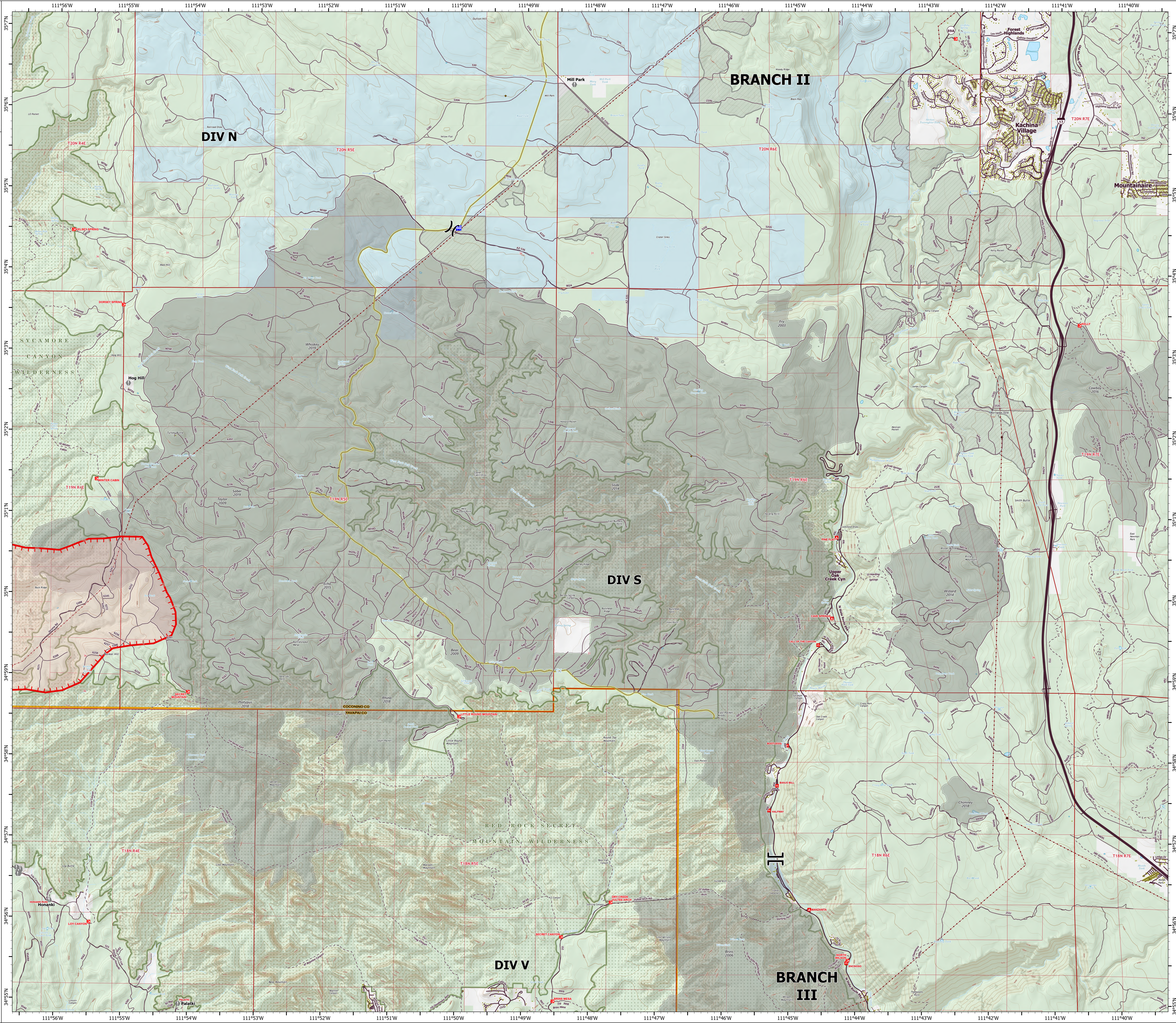
Kilometers



# OPERATIONS

**DIV S**  
Rafael  
AZ-PNF-863  
6/24/2021  
34,949 acres at 6/23/21 0254 hrs

- )( Division Break
- || Branch Break
- Drop Point
- Value at Risk
- ▲ Campground
- Trailhead
- Visitor Center
- Picnic Site
- Interpretive Site
- Structure
- Completed Hand Line
- Fire Edge
- Primary Highway
- Secondary Highway
- Paved Roads
- Dirt (Not Paved)
- USFS Road
- Woody Mtn Rd
- Trail
- Wildfire Daily Fire Perimeter
- FS Common Unit Names
- Substation
- Transmission Line
- Oil and Natural Gas Well
- Fire History
- Fuel Treatment
- Administrative FS Boundary
- Federal Wilderness Boundary
- County Boundary
- Local or State Parks
- Private
- State
- US Forest Service



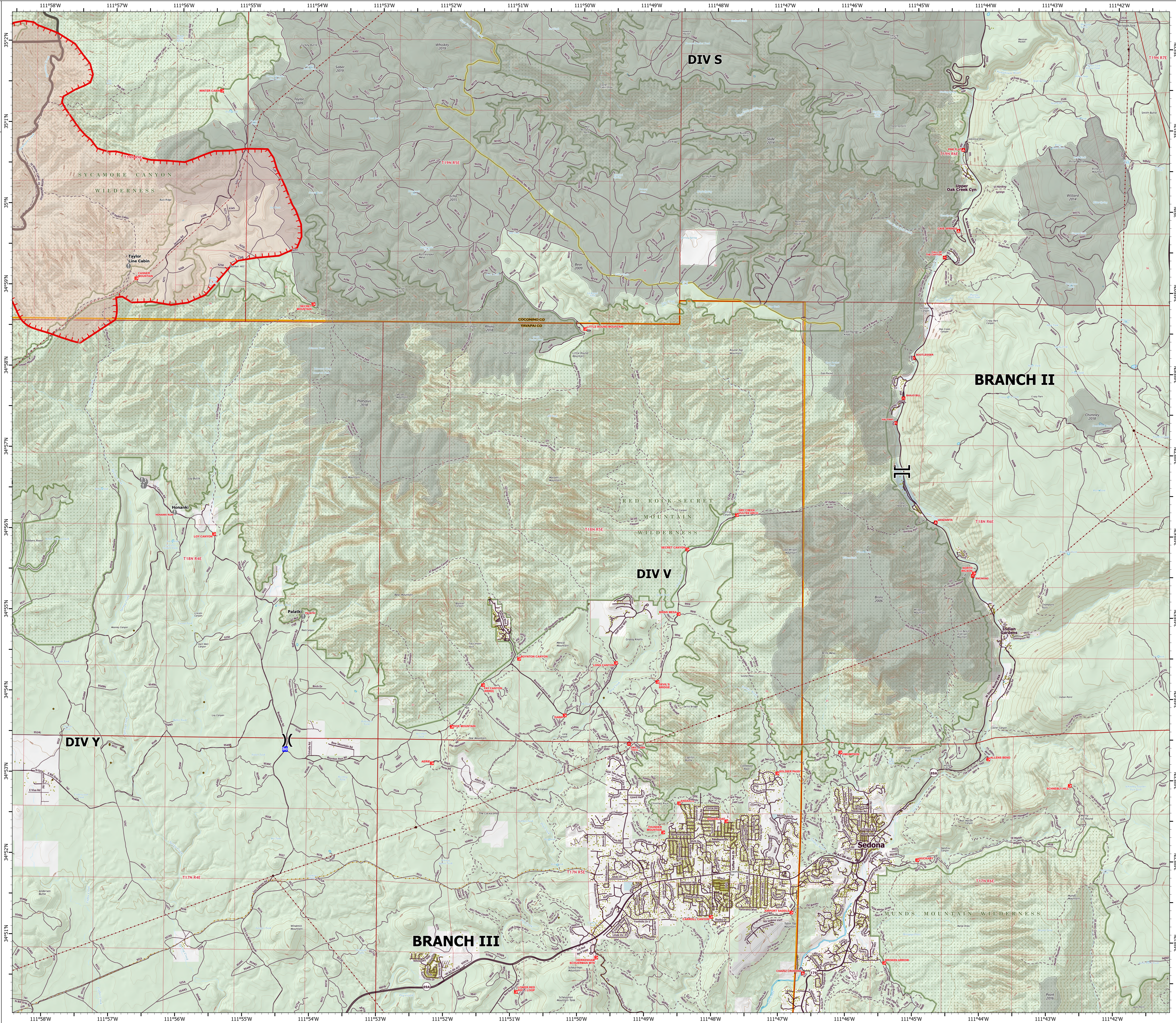
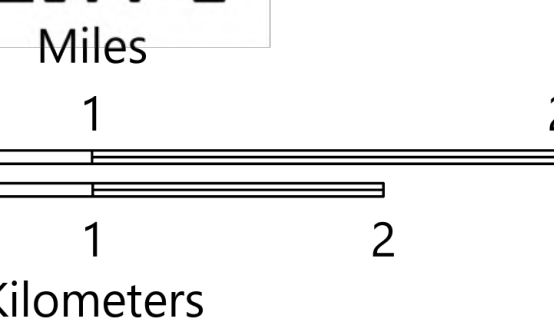
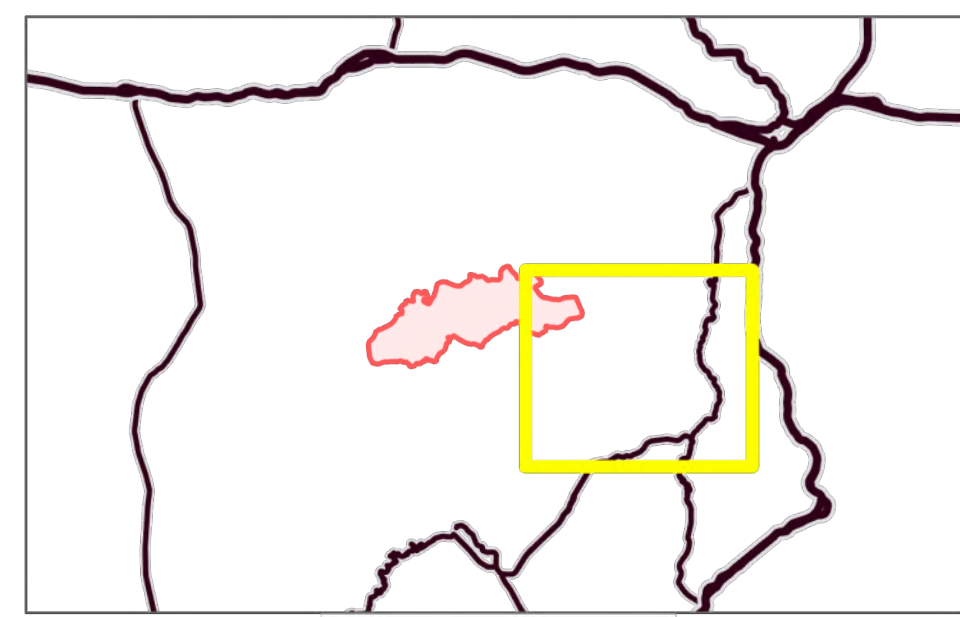
# OPERATIONS

DIV V

Rafael  
AZ-PNF-863  
6/24/2021

34,949 acres at 6/23/21 0254 hrs

- ( ) Division Break
- || Branch Break
- Drop Point
- ▲ Value at Risk
- ▲ Campground
- ▲ Trailhead
- ▲ Visitor Center
- ▲ Picnic Site
- ▲ Interpretive Site
- Structure
- Completed Hand Line
- Fire Edge
- Primary Highway
- Secondary Highway
- Paved Roads
- Dirt (Not Paved)
- USFS Road
- Woody Mtn Rd
- Trail
- Tunnel; Bridge
- Runway
- ▭ Wildfire Daily Fire Perimeter
- FS Common Unit Names
- Substation
- Transmission Line
- Oil and Natural Gas Well
- Oil and Natural Gas Pipeline
- Fire History
- Fuel Treatment
- Administrative FS Boundary
- Federal Wilderness Boundary
- County Boundary
- County
- Local or State Parks
- Other Federal
- Private
- State
- US Forest Service



# OPERATIONS

DIV Y

Rafael

AZ-PNF-863

6/24/2021

34,949 acres at 6/23/21 0254 hrs

- ( ) Division Break
- ⌋ Branch Break
- Drop Point
- Value at Risk
- 📍 Trailhead
- 🏠 Visitor Center
- 🏛️ Interpretive Site
- Structure
- Completed Hand Line
- 🔴 Fire Edge
- Secondary Highway
- Paved Roads
- Dirt (Not Paved)
- USFS Road
- 🟡 Woody Mtn Rd
- Trail
- 🚂 Railroad
- 🔴 Wildfire Daily Fire Perimeter
- FS Common Unit Names
- Substation
- Transmission Line
- 🛢️ Oil and Natural Gas Well
- Oil and Natural Gas Pipeline
- 📅 Fire History
- Administrative FS Boundary
- Federal Wilderness Boundary
- 🟡 County Boundary
- Local or State Parks
- Private
- 🌲 US Forest Service

