

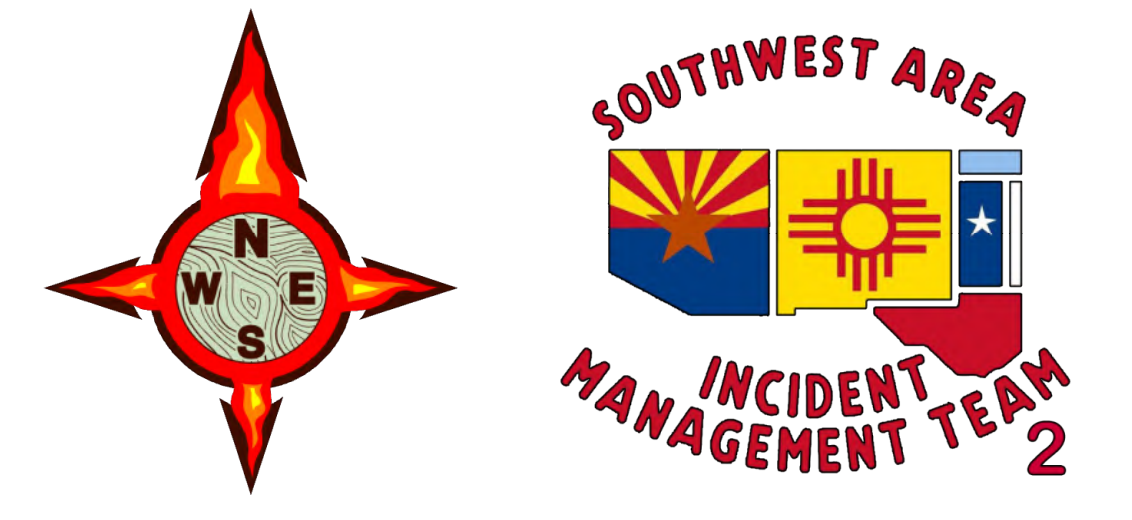
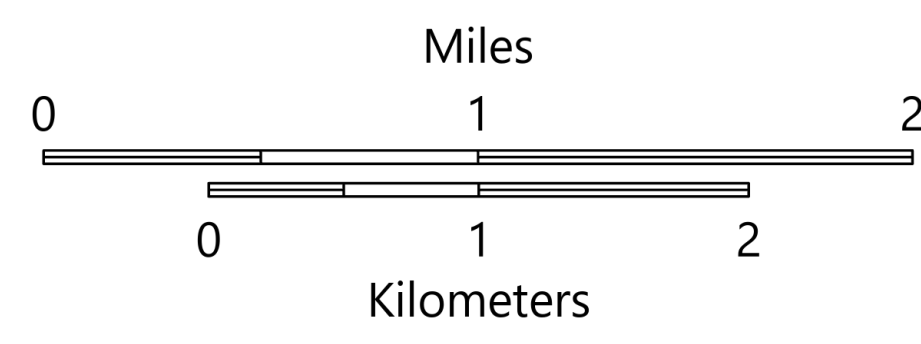
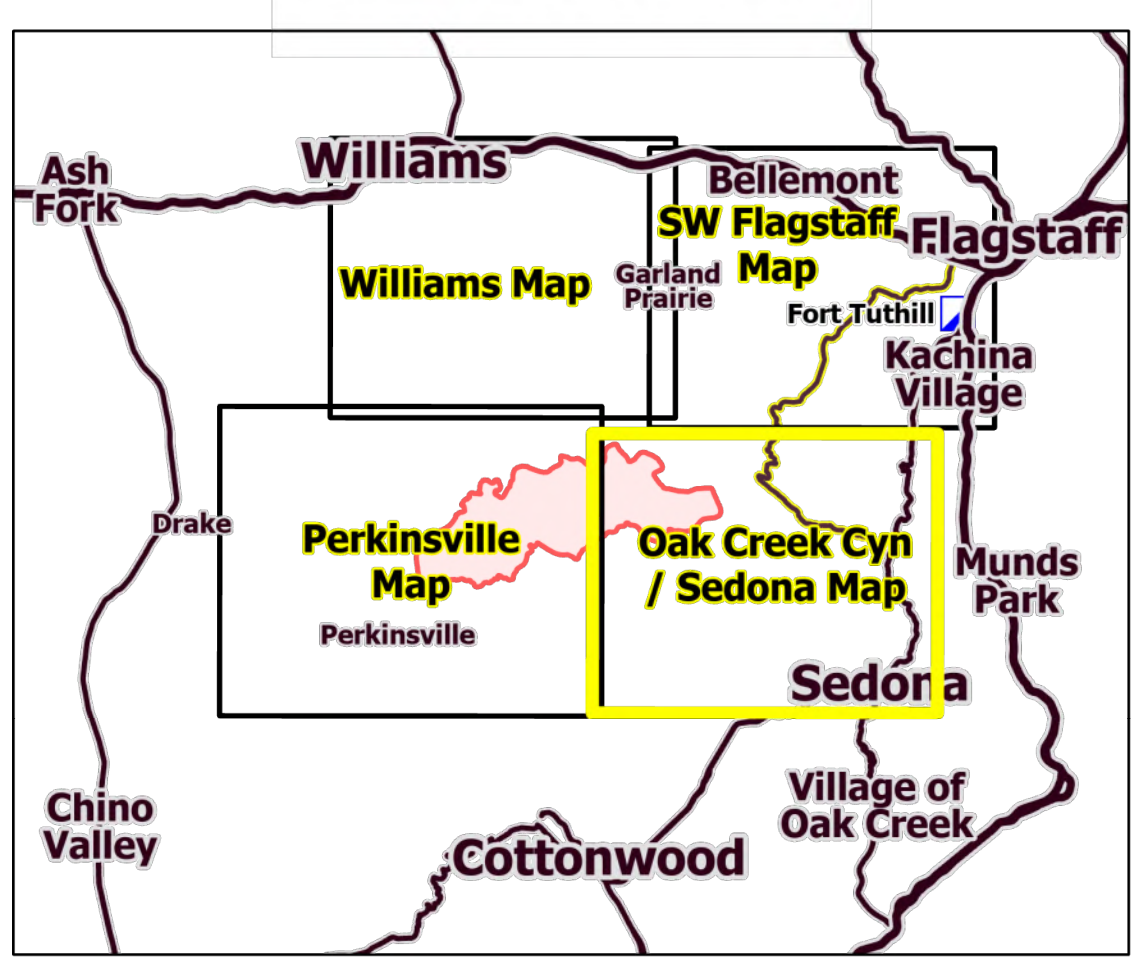
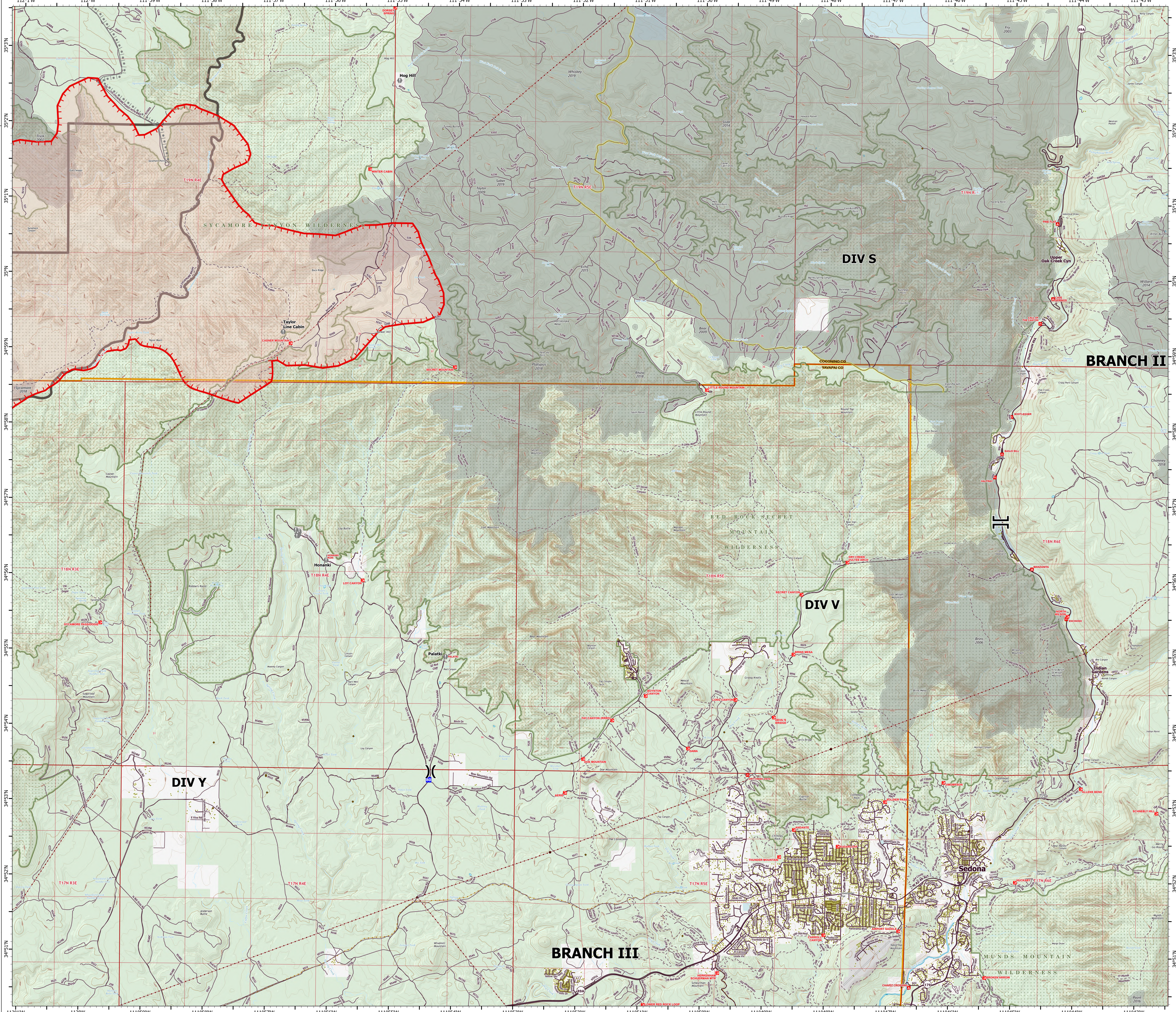
STRUCTURES

Oak Creek Cyn / Sedona

Rafael
AZ-PNF-863
6/24/2021

34,949 acres at 6/23/21 0254 hrs

- () Division Break
- || Branch Break
- Drop Point
- Value at Risk
- Structure
- Completed Hand Line
- Planned Burnout
- Fire Edge
- Secondary Highway
- Paved Roads
- Dirt (Not Paved)
- USFS Road
- Woody Mtn Rd
- Trail
- Tunnel; Bridge
- Runway
- Wildfire Daily Fire Perimeter
- Substation
- Transmission Line
- Oil and Natural Gas Well
- Oil and Natural Gas Pipeline
- Fire History
- Administrative FS Boundary
- Federal Wilderness Boundary
- County Boundary
- County
- Local or State Parks
- Other Federal
- Private
- State
- US Forest Service



STRUCTURES

Perkinsville

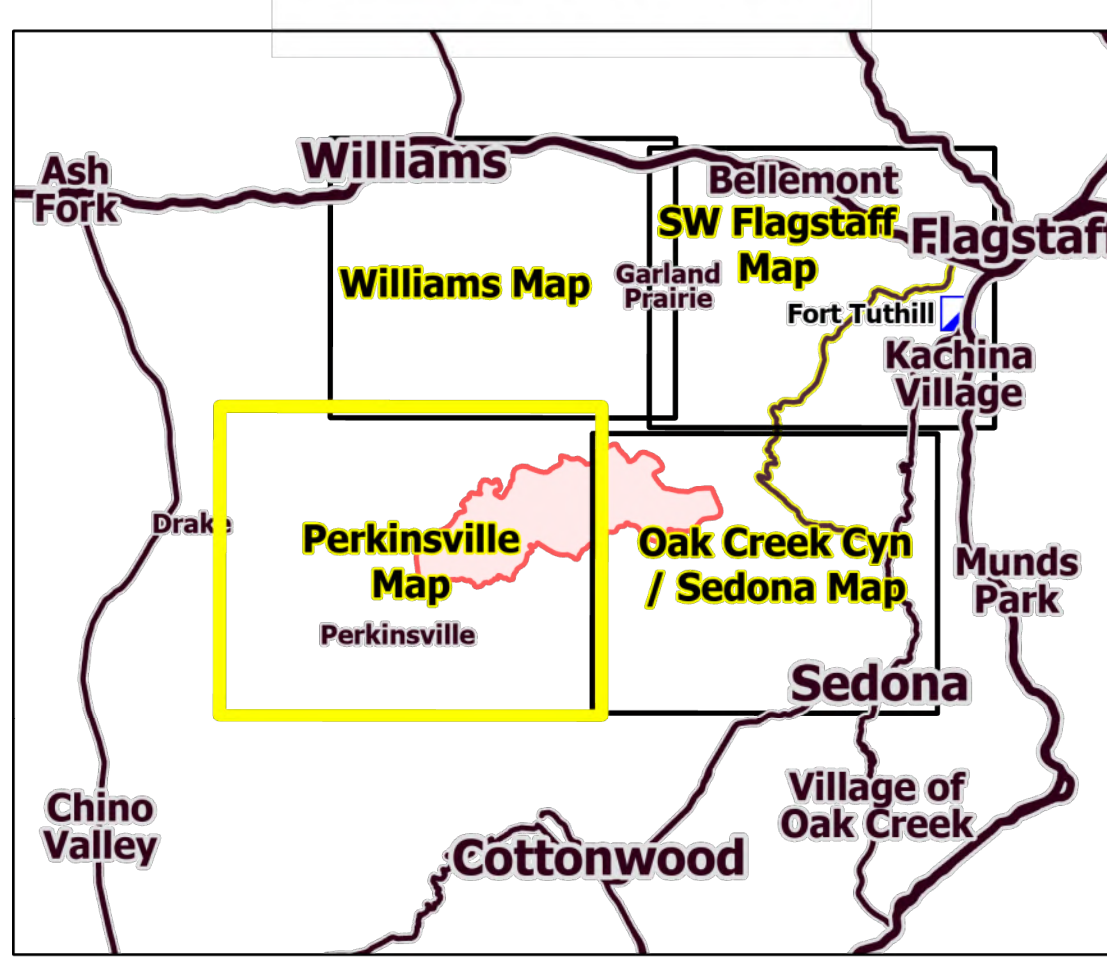
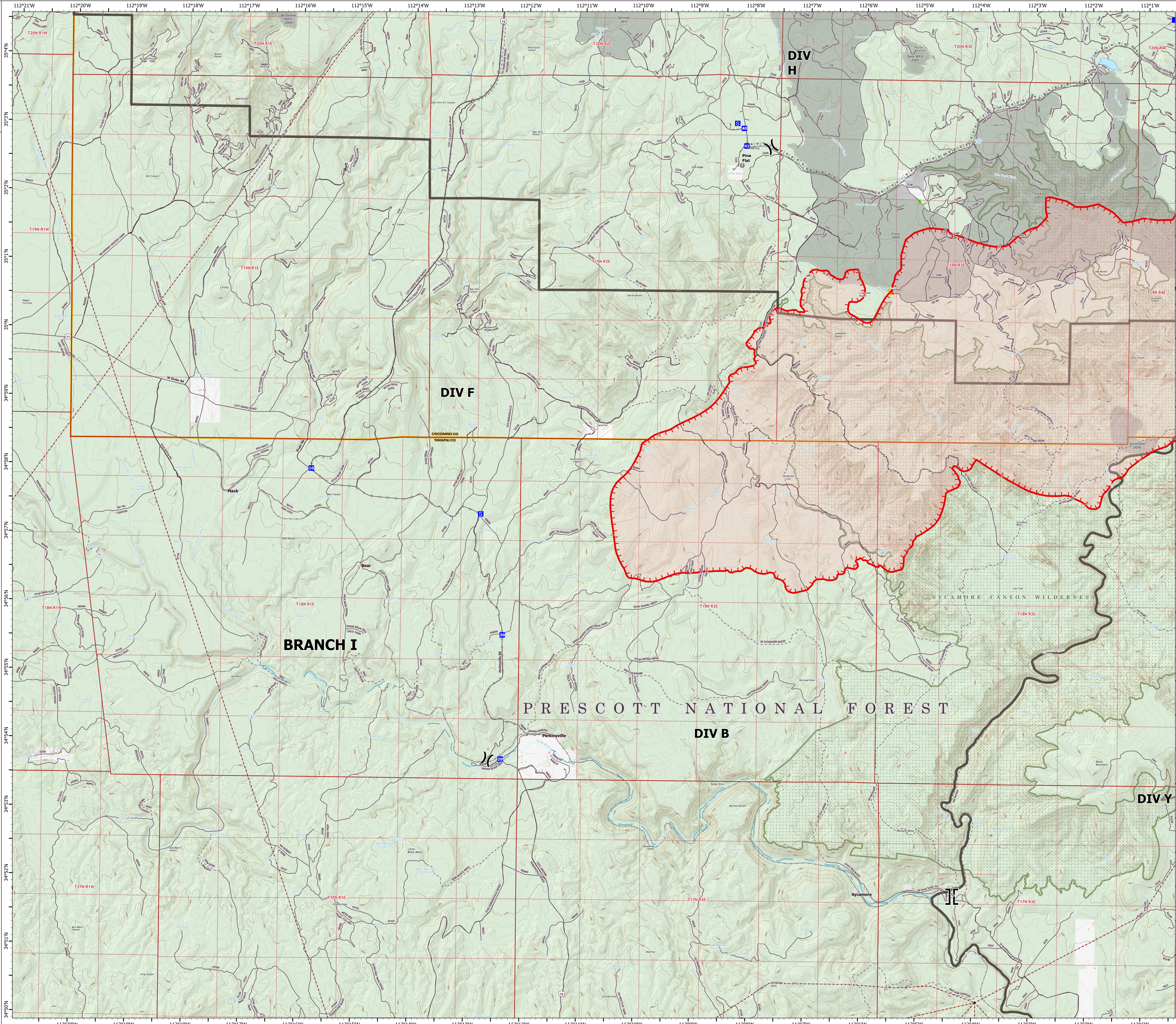
Rafael

AZ-PNF-863

6/24/2021

34,949 acres at 6/23/21 0254 hrs

- (X) Division Break
- (I) Branch Break
- Drop Point
- S Staging Area
- Value at Risk
- Structure
- Planned Burnout
- Planned Road as Line
- Fire Edge
- Paved Roads
- Dirt (Not Paved)
- USFS Road
- Trail
- Railroad
- Defensible - Stand Alone
- Defensible - Prep and Hold
- Wildfire Daily Fire Perimeter
- Substation
- Transmission Line
- Fire History
- Administrative FS Boundary
- Federal Wilderness Boundary
- County Boundary
- Private
- US Forest Service



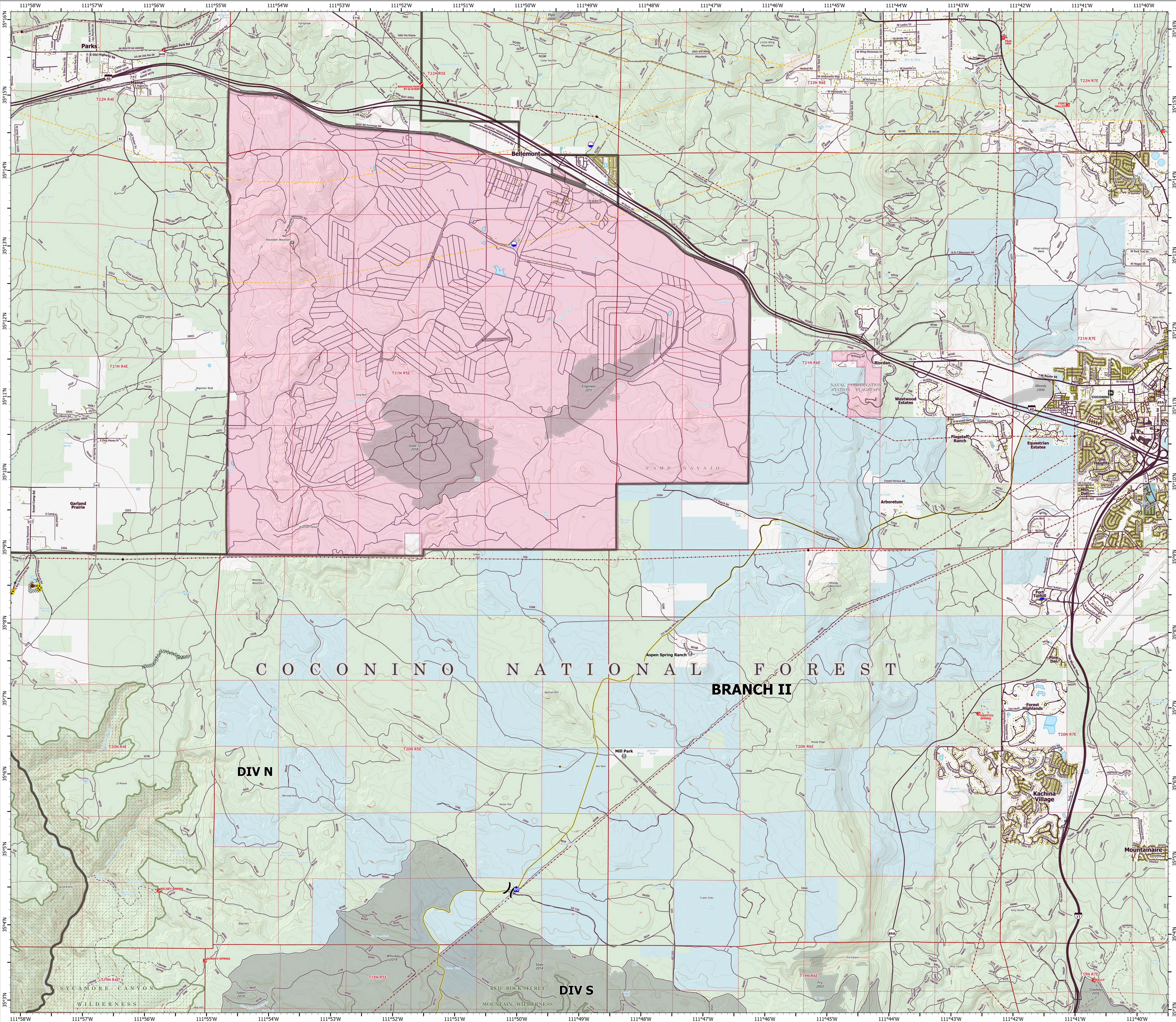
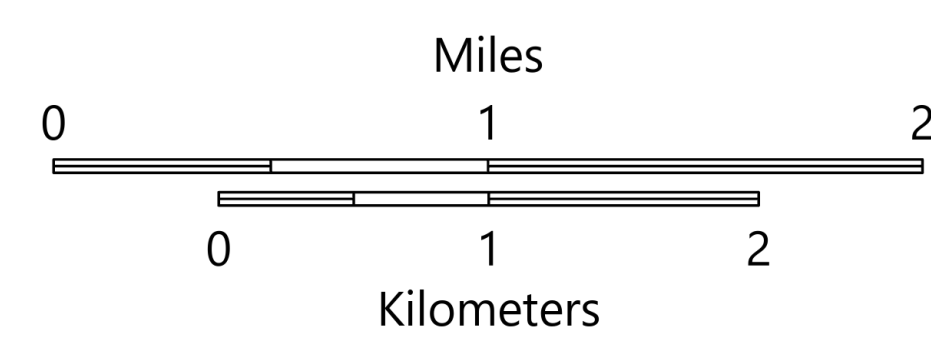
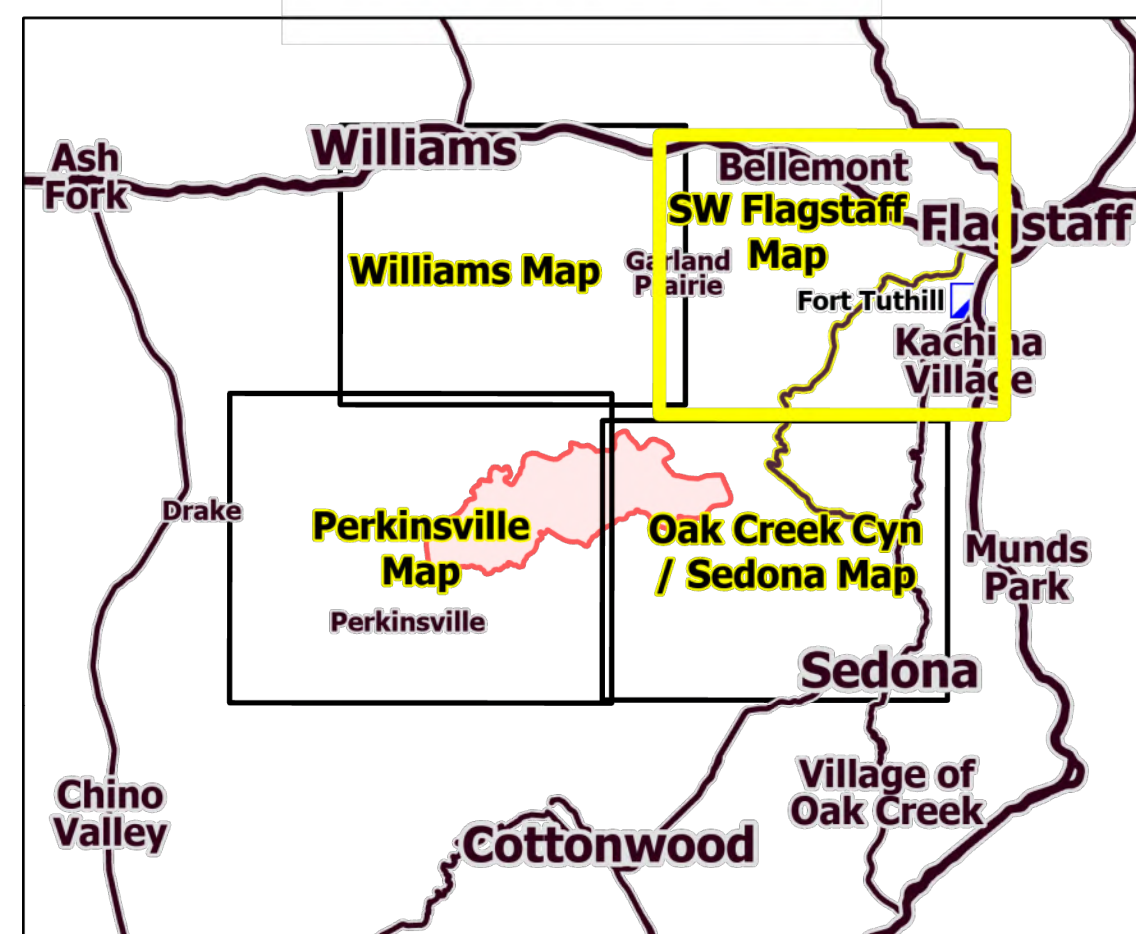
STRUCTURES

SW Flagstaff

Rafael
AZ-PNF-863
6/24/2021

34,949 acres at 6/23/21 0254 hrs

- Dip Site
- Division Break
- Incident Command Post
- Drop Point
- Value at Risk
- Safety Zone
- Hazard
- Structure
- Completed Dozer Line
- Completed Road as Line
- Primary Highway
- Secondary Highway
- Paved Roads
- Dirt (Not Paved)
- USFS Road
- Woody Mtn Rd
- Trail
- Tunnel; Bridge
- Railroad
- Runway
- Defensible - Stand Alone
- Defensible - Prep and Hold
- Non-Defensible - Rescue Drive-By
- Substation
- Transmission Line
- Natural Gas Liquid Pipeline
- Oil and Natural Gas Well
- Oil and Natural Gas Pipeline
- Fire History
- Administrative FS Boundary
- Federal Wilderness Boundary
- County Boundary
- Local or State Parks
- Military
- Private
- State
- State Wildlife Area
- US Forest Service



STRUCTURES

Williams

Rafael
AZ-PNF-863
6/24/2021

34,949 acres at 6/23/21 0254 hrs

- Dip Site
- Division Break
- Branch Break
- Drop Point
- Staging Area
- Value at Risk
- Repeater
- Safety Zone
- Hazard
- Structure
- Completed Dozer Line
- Completed Hand Line
- Completed Road as Line
- Planned Burnout
- Planned Road as Line
- Primary Highway
- Secondary Highway
- Paved Roads
- Dirt (Not Paved)
- USFS Road
- Trail
- Tunnel; Bridge
- Railroad
- Defensible - Stand Alone
- Defensible - Prep and Hold
- Non-Defensible - Prep and Leave
- Non-Defensible - Rescue Drive-By
- Substation
- Transmission Line
- Natural Gas Liquid Pipeline
- Oil and Natural Gas Pipeline
- Fire History
- Administrative FS Boundary
- Federal Wilderness Boundary
- County Boundary
- Private
- State
- US Forest Service

