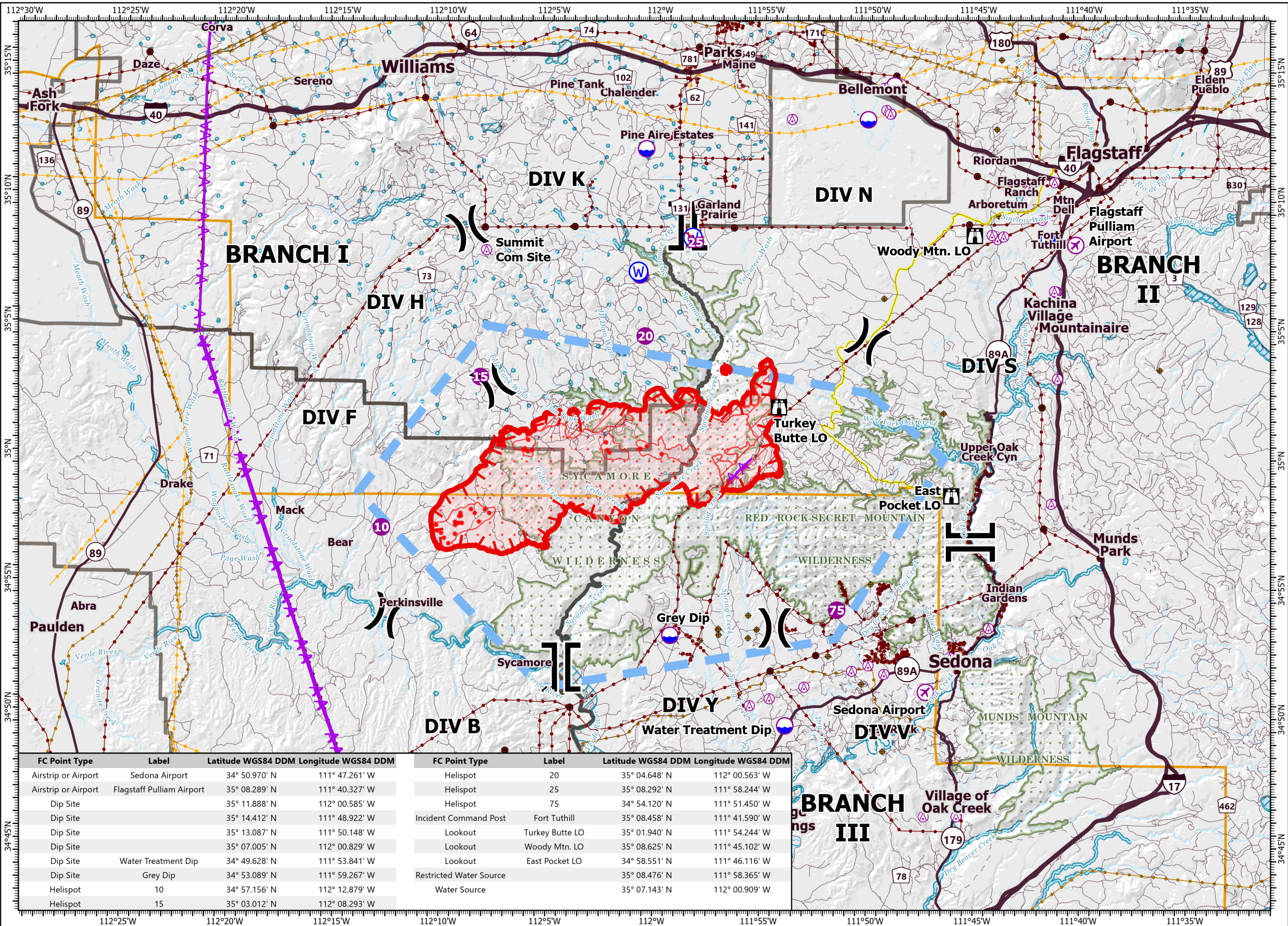


PILOT

Rafael
AZ-PNF-863
6/25/2021

39,641 acres at 6/25/21 0027 hrs

- Aerial Hazard
- Airstrip or Airport
- Dip Site
- Helispot
- Division Break
- Branch Break
- Incident Command Post
- Lookout
- Water Source
- Restricted Water Source
- IR Isolated Heat Source
- Aerial Hazard
- Temporary Flight Restriction
- Fire Edge
- Wildfire Daily Fire Perimeter
- IR Heat Perimeter
- IR Intense Heat
- IR Scattered Heat
- Community
- Primary Highway
- Secondary Highway
- USFS Road
- Woody Mtn Rd
- Trail
- Substation
- Transmission Line
- Natural Gas Liquid Pipeline
- Oil and Natural Gas Well
- Oil and Natural Gas Pipeline
- Administrative FS Boundary



FC Point Type	Label	Latitude WGS84 DDM	Longitude WGS84 DDM	FC Point Type	Label	Latitude WGS84 DDM	Longitude WGS84 DDM
Airstrip or Airport	Sedona Airport	34° 50.970' N	111° 47.261' W	Helispot	20	35° 04.648' N	112° 00.563' W
Airstrip or Airport	Flagstaff Pulliam Airport	35° 08.289' N	111° 40.327' W	Helispot	25	35° 08.292' N	111° 58.244' W
Dip Site		35° 11.888' N	112° 00.585' W	Helispot	75	34° 54.120' N	111° 51.450' W
Dip Site		35° 14.412' N	111° 48.922' W	Incident Command Post	Fort Tuthill	35° 08.458' N	111° 41.590' W
Dip Site		35° 13.087' N	111° 50.148' W	Lookout	Turkey Butte LO	35° 01.940' N	111° 54.244' W
Dip Site		35° 07.005' N	112° 00.829' W	Lookout	Woody Mtn. LO	35° 08.625' N	111° 45.102' W
Dip Site	Water Treatment Dip	34° 49.628' N	111° 53.841' W	Lookout	East Pocket LO	34° 58.551' N	111° 46.116' W
Dip Site	Grey Dip	34° 53.089' N	111° 59.267' W	Restricted Water Source		35° 08.476' N	111° 58.365' W
Helispot	10	34° 57.156' N	112° 12.879' W	Water Source		35° 07.143' N	112° 00.909' W
Helispot	15	35° 03.012' N	112° 08.293' W				

1:248,000 - SWAIMT2 GIS - 6/25/2021
0501
Acres from GIS (geodesic)

