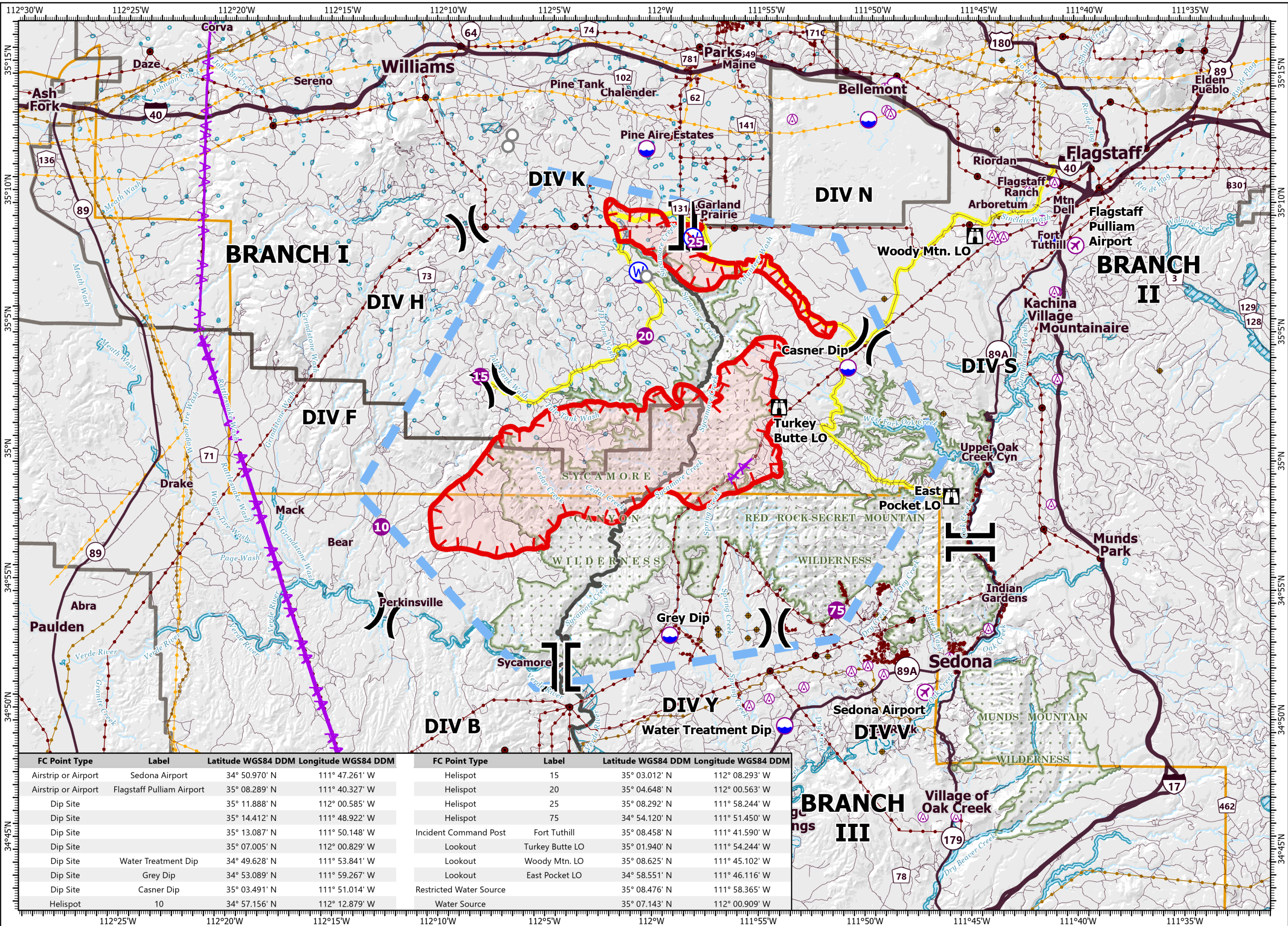


PILOT

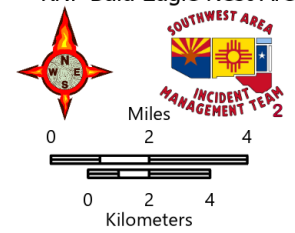
Rafael
AZ-PNF-863
6/26/2021

52,195 acres at 6/26/21 1330 hrs

- Aerial Hazard
- Airstrip or Airport
- Dip Site
- Helispot
- Division Break
- Branch Break
- Incident Command Post
- Lookout
- Water Source
- Restricted Water Source
- Aerial Hazard
- Temporary Flight Restriction
- Fire Edge
- Contained Line
- Wildfire Daily Fire Perimeter
- Primary Highway
- Secondary Highway
- USFS Road
- Access Road
- Trail
- Substation
- Transmission Line
- Natural Gas Liquid Pipeline
- Oil and Natural Gas Well
- Oil and Natural Gas Pipeline
- Administrative FS Boundary
- Federal Wilderness Boundary
- County Boundary
- Retardant Avoidance
- KNF Bald Eagle Nest Areas



FC Point Type	Label	Latitude WGS84 DDM	Longitude WGS84 DDM	FC Point Type	Label	Latitude WGS84 DDM	Longitude WGS84 DDM
Airstrip or Airport	Sedona Airport	34° 50.970' N	111° 47.261' W	Helispot	15	35° 03.012' N	112° 08.293' W
Airstrip or Airport	Flagstaff Pulliam Airport	35° 08.289' N	111° 40.327' W	Helispot	20	35° 04.648' N	112° 00.563' W
Dip Site		35° 11.888' N	112° 00.585' W	Helispot	25	35° 08.292' N	111° 58.244' W
Dip Site		35° 14.412' N	111° 48.922' W	Helispot	75	34° 54.120' N	111° 51.450' W
Dip Site		35° 13.087' N	111° 50.148' W	Incident Command Post	Fort Tuthill	35° 08.458' N	111° 41.590' W
Dip Site		35° 07.005' N	112° 00.829' W	Lookout	Turkey Butte LO	35° 01.940' N	111° 54.244' W
Dip Site	Water Treatment Dip	34° 49.628' N	111° 53.841' W	Lookout	Woody Mtn. LO	35° 08.625' N	111° 45.102' W
Dip Site	Grey Dip	34° 53.089' N	111° 59.267' W	Lookout	East Pocket LO	34° 58.551' N	111° 46.116' W
Dip Site	Casner Dip	35° 03.491' N	111° 51.014' W	Restricted Water Source		35° 08.476' N	111° 58.365' W
Helispot	10	34° 57.156' N	112° 12.879' W	Water Source		35° 07.143' N	112° 00.909' W



1:248,000 - SWAIMT2 GIS - 6/26/2021 0835
Acres from GIS (geodesic)
North American 1983 Datum, Lat/Long Grid