

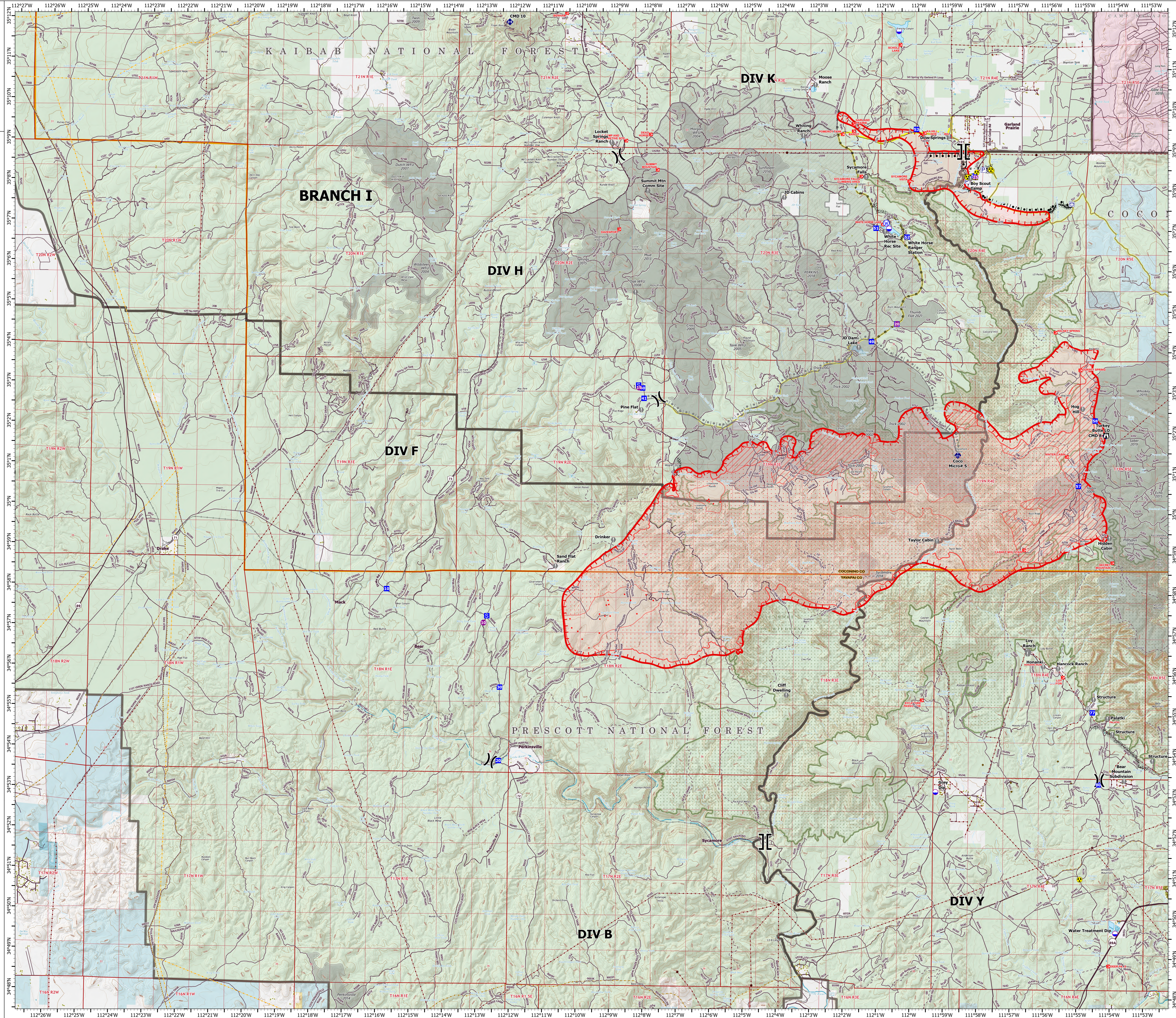
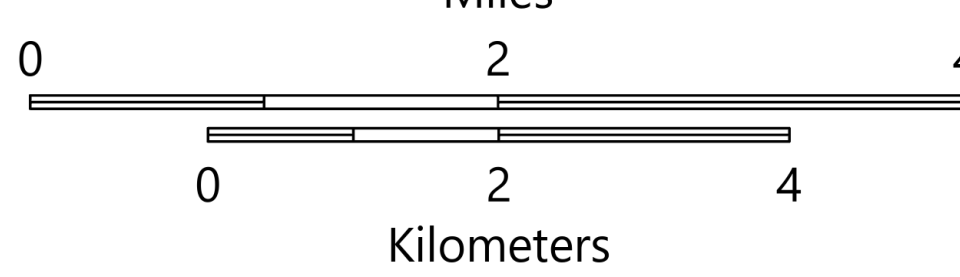
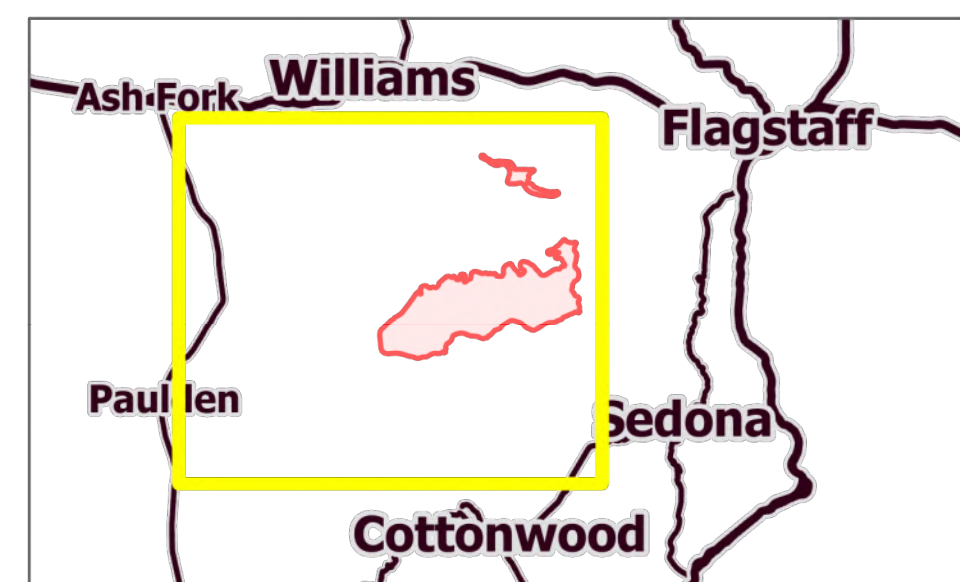
# OPERATIONS

## BRANCH I

Rafael  
AZ-PNF-863  
6/26/2021

45,899 acres at 6/25/21 1530 hrs

- Helispot
- Dip Site
- ⌵ Division Break
- ⌵ Branch Break
- Drop Point
- Ⓜ Staging Area
- Ⓜ Lookout
- Ⓜ Value at Risk
- Ⓜ Gate
- Ⓜ Mobile Weather Unit
- Ⓜ Repeater
- Ⓜ Safety Zone
- Ⓜ Hazard
- Ⓜ Water Source
- Ⓜ Pump
- Ⓜ Water Tank
- IR Isolated Heat Source
- Structure
- Completed Burnout
- Completed Dozer Line
- Completed Hand Line
- Completed Road as Line
- Planned Burnout
- Planned Dozer Line
- Planned Road as Line
- Planned Secondary Line
- Fire Edge
- Secondary Highway
- Paved Roads
- Dirt (Not Paved)
- USFS Road
- Access Road
- Trail
- Railroad
- IR Heat Perimeter
- IR Intense Heat
- IR Scattered Heat
- Wildfire Daily Fire Perimeter
- Substation
- Transmission Line
- Natural Gas Liquid Pipeline
- Oil and Natural Gas Well
- Oil and Natural Gas Pipeline
- Fire History
- Administrative FS Boundary
- Federal Wilderness Boundary
- County Boundary
- Bureau of Land Management
- Military
- Private
- State
- State Wildlife Area
- US Forest Service



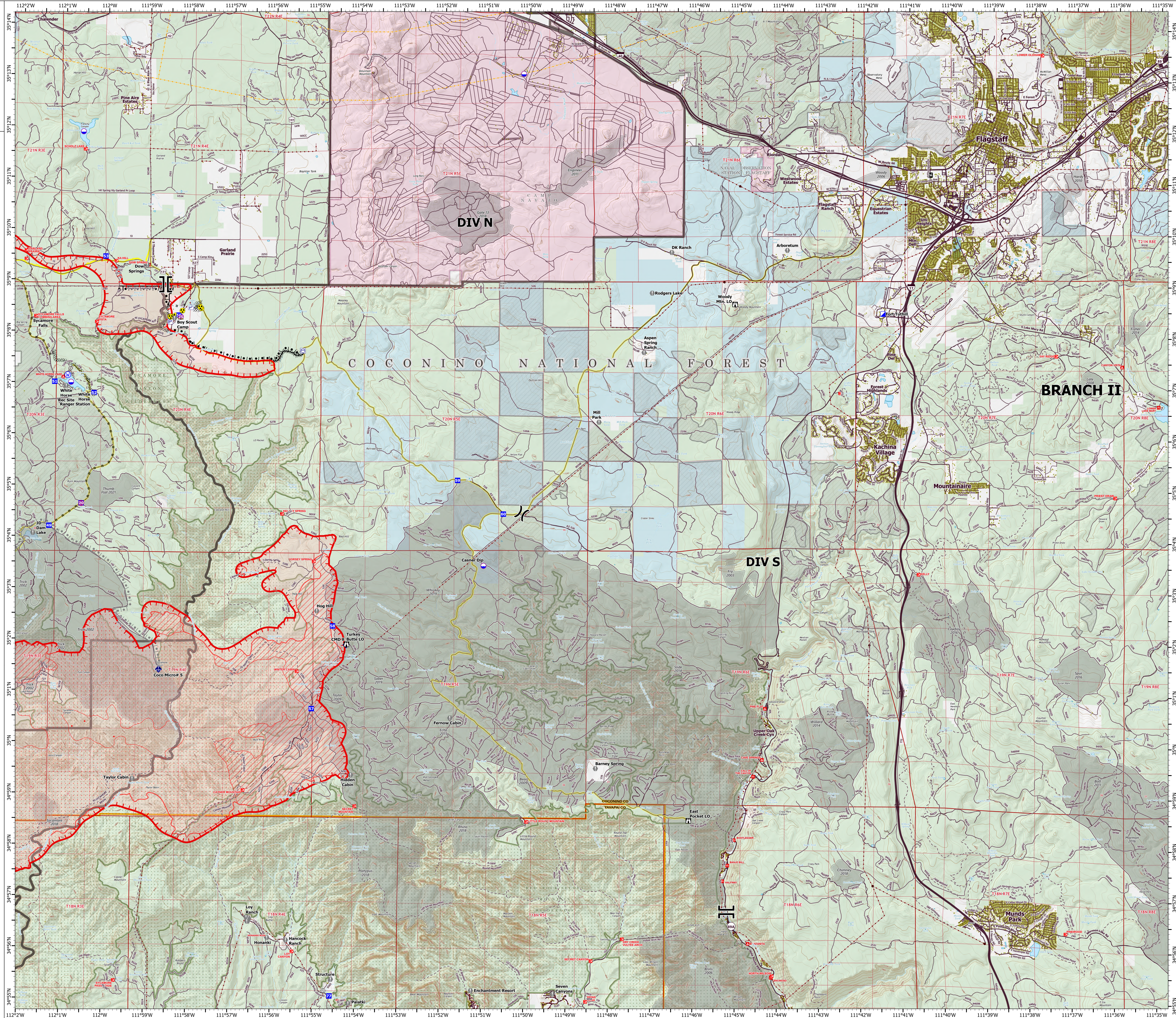
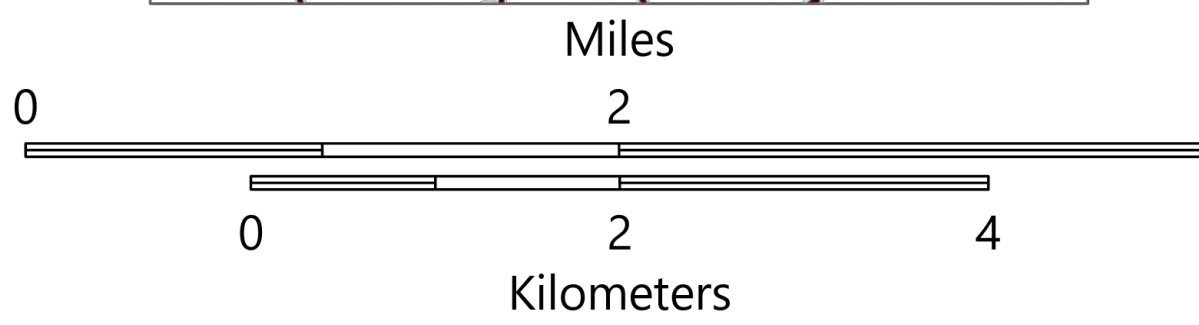
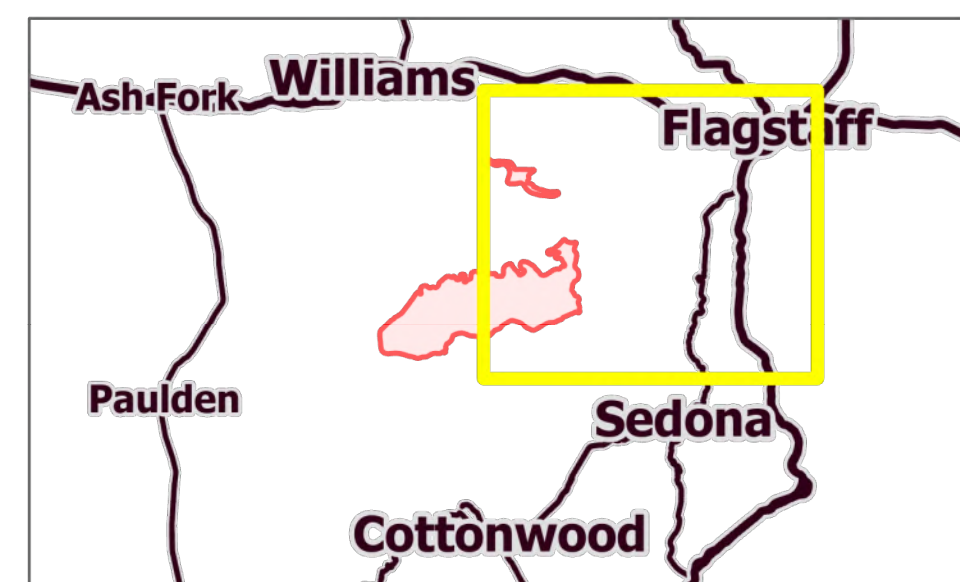
# OPERATIONS

## BRANCH II

Rafael  
AZ-PNF-863  
6/26/2021

45,899 acres at 6/25/21 1530 hrs

- Helispot
- Dip Site
- ⌘ Division Break
- ⌘ Branch Break
- ⌘ Incident Command Post
- ⌘ Drop Point
- ⌘ Lookout
- ⊙ Value at Risk
- ⊙ Gate
- ⊙ Mobile Weather Unit
- ⊙ Repeater
- ⊙ Safety Zone
- ⊙ Hazard
- ⊙ Water Source
- ⊙ Pump
- ⊙ Water Tank
- ⊙ IR Isolated Heat Source
- ⌘ Structure
- ⌘ Completed Burnout
- ⌘ Completed Dozer Line
- ⌘ Completed Hand Line
- ⌘ Completed Road as Line
- ⌘ Planned Burnout
- ⌘ Planned Dozer Line
- ⌘ Planned Secondary Line
- Fire Edge
- Primary Highway
- Secondary Highway
- Paved Roads
- Dirt (Not Paved)
- USFS Road
- Access Road
- Trail
- Tunnel; Bridge
- Railroad
- Runway
- ⌘ IR Heat Perimeter
- ⌘ IR Intense Heat
- ⌘ IR Scattered Heat
- ⌘ Wildfire Daily Fire Perimeter
- Substation
- Transmission Line
- Natural Gas Liquid Pipeline
- Oil and Natural Gas Well
- Oil and Natural Gas Pipeline
- Fire History
- Administrative FS Boundary
- Federal Wilderness Boundary
- County Boundary
- Local or State Parks
- Military
- Private
- State
- State Wildlife Area
- US Forest Service
- Fuel Treatment



# OPERATIONS

## BRANCH III

Rafael  
AZ-PNF-863  
6/26/2021

45,899 acres at 6/25/21 1530 hrs

- Helispot
- Dip Site
- ⌋ Division Break
- ⌋ Branch Break
- Drop Point
- ⛑ Camp
- ⛑ Lookout
- ⚠ Value at Risk
- ⚠ Gate
- ⚠ Mobile Weather Unit
- ⚠ Hazard
- IR Isolated Heat Source
- Structure
- ⚡ Completed Dozer Line
- ⚡ Completed Hand Line
- ⚡ Planned Dozer Line
- Fire Edge
- Primary Highway
- Secondary Highway
- Paved Roads
- Dirt (Not Paved)
- USFS Road
- Access Road
- Trail
- Tunnel; Bridge
- Railroad
- Runway
- ▭ IR Heat Perimeter
- ▭ IR Intense Heat
- ▭ IR Scattered Heat
- ▭ Wildfire Daily Fire Perimeter
- Substation
- Transmission Line
- Natural Gas Liquid Pipeline
- Oil and Natural Gas Well
- Oil and Natural Gas Pipeline
- ▭ Fire History
- ▭ Administrative FS Boundary
- ▭ Federal Wilderness Boundary
- ▭ County Boundary
- ▭ County
- ▭ Indian Lands
- ▭ Local or State Parks
- ▭ National Park Service
- ▭ Other Federal
- ▭ Private
- ▭ State
- ▭ State Wildlife Area
- ▭ US Forest Service
- ▭ Fuel Treatment

