

OPERATIONS

DIV B

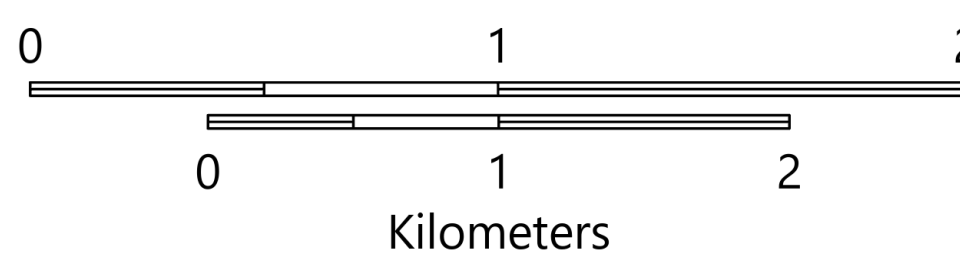
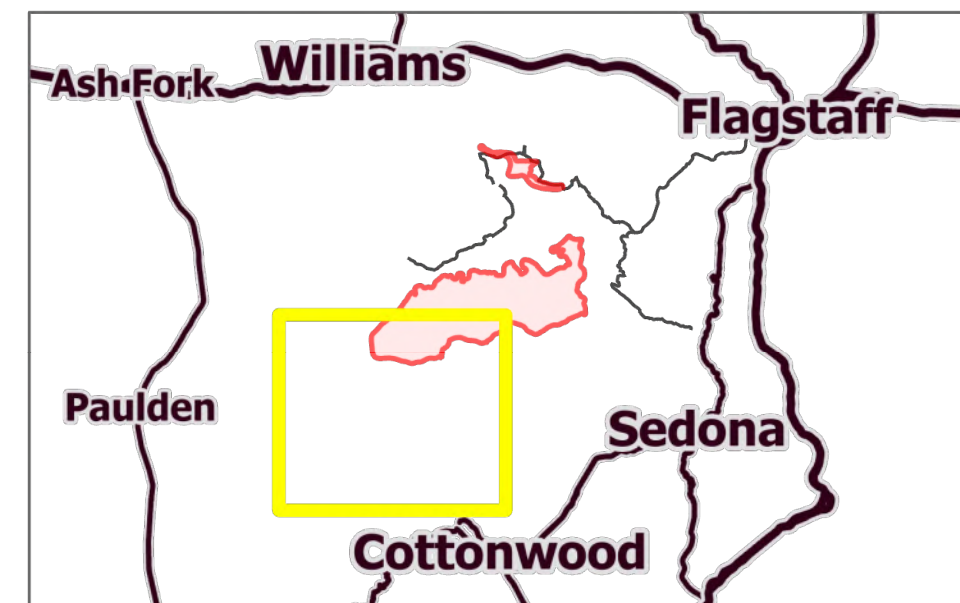
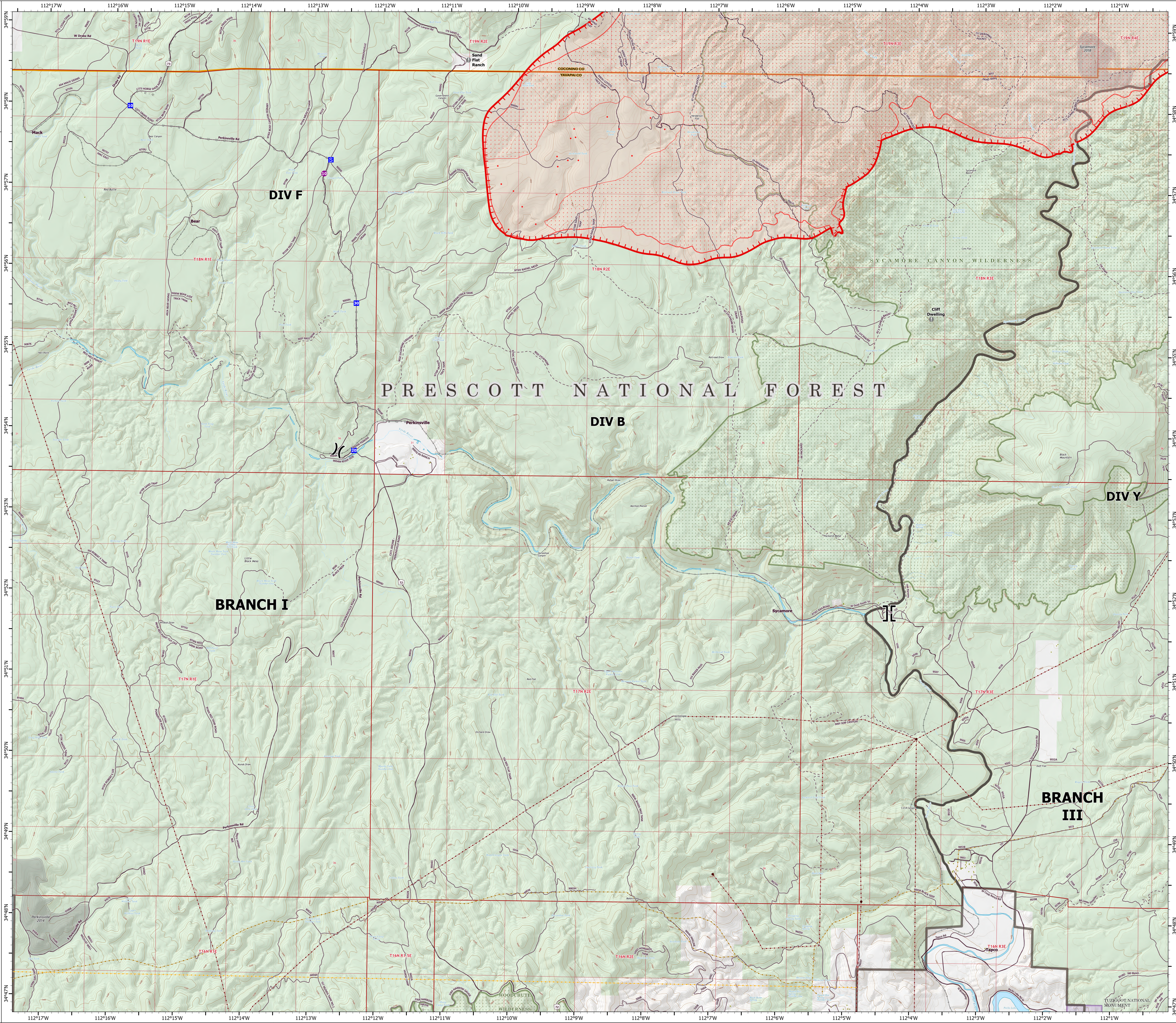
Rafael

AZ-PNF-863

6/26/2021

45,899 acres at 6/25/21 1530 hrs

- Helispot
- () Division Break
- ⌋ Branch Break
- Drop Point
- Staging Area
- Value at Risk
- IR Isolated Heat Source
- Structure
- Planned Road as Line
- Fire Edge
- Paved Roads
- Dirt (Not Paved)
- USFS Road
- Trail
- Railroad
- ▭ IR Heat Perimeter
- ▭ IR Scattered Heat
- ▭ Wildfire Daily Fire Perimeter
- Substation
- Transmission Line
- Natural Gas Liquid Pipeline
- Oil and Natural Gas Pipeline
- Fire History
- Administrative FS Boundary
- Federal Wilderness Boundary
- County Boundary
- National Park Service
- Private
- State
- US Forest Service



OPERATIONS

DIV F

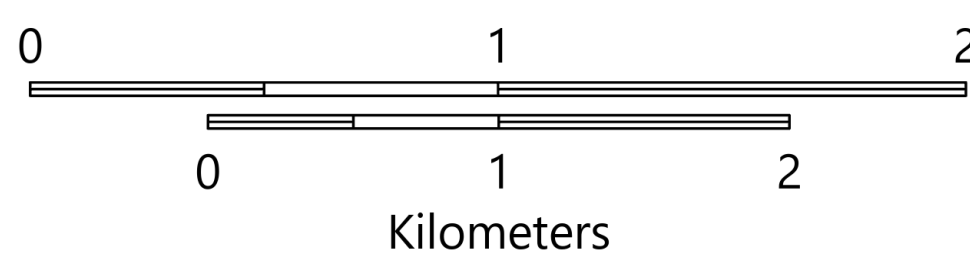
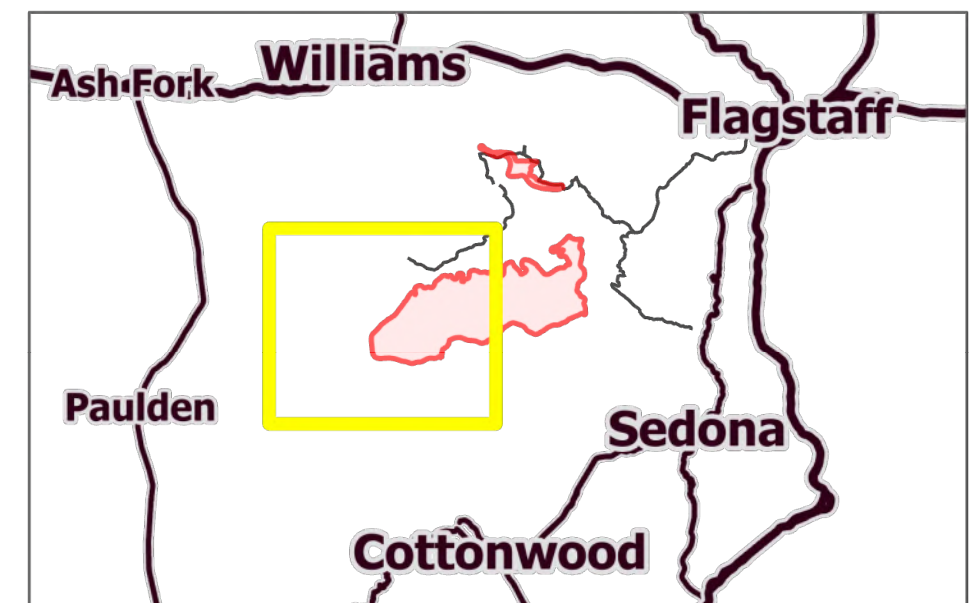
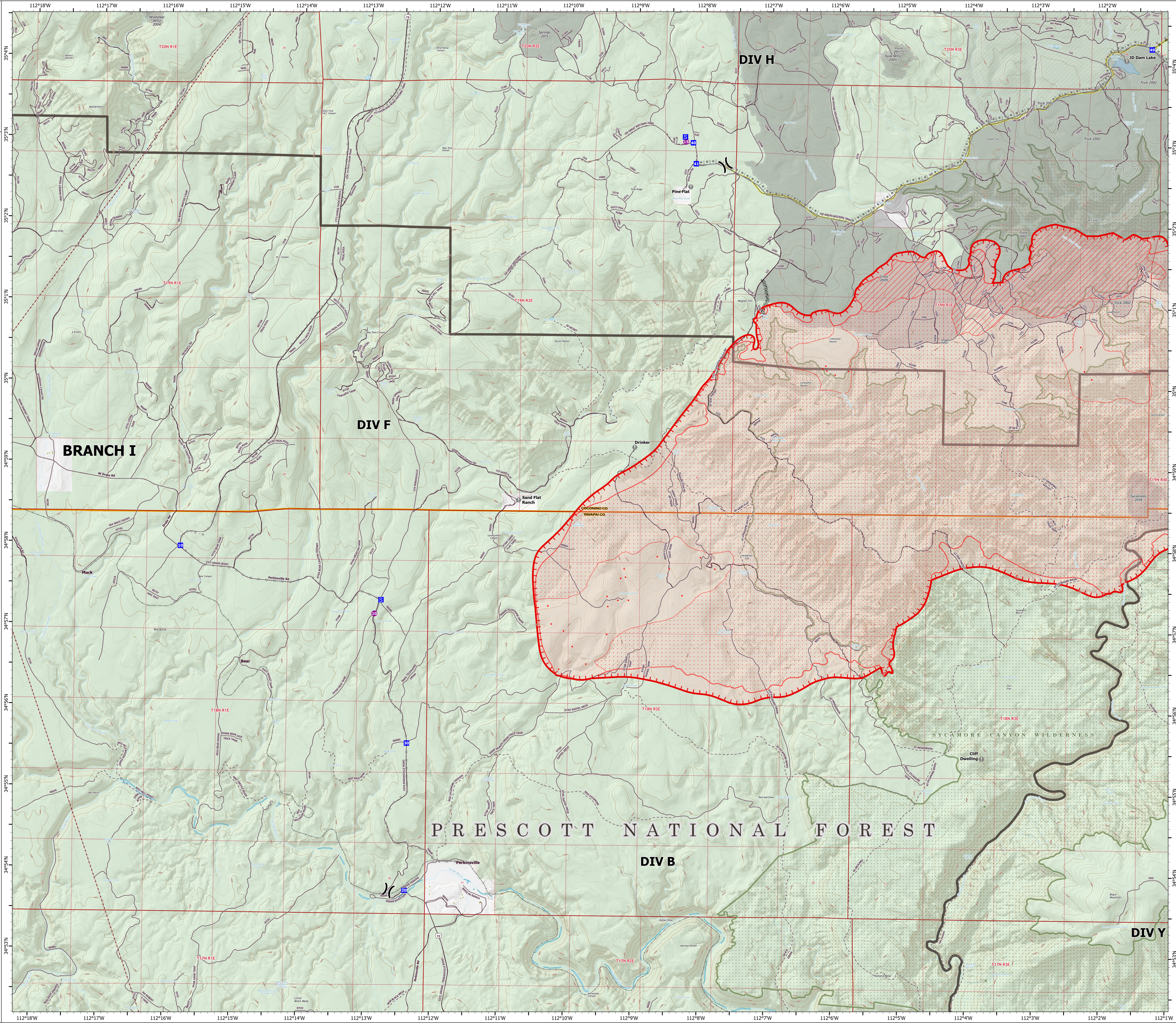
Rafael

AZ-PNF-863

6/26/2021

45,899 acres at 6/25/21 1530 hrs

- Helispot
- () Division Break
- Drop Point
- Staging Area
- Value at Risk
- IR Isolated Heat Source
- Structure
- Completed Dozer Line
- Completed Road as Line
- Planned Burnout
- Planned Road as Line
- Fire Edge
- Paved Roads
- Dirt (Not Paved)
- USFS Road
- Access Road
- Trail
- Railroad
- IR Heat Perimeter
- IR Intense Heat
- IR Scattered Heat
- Wildfire Daily Fire Perimeter
- Transmission Line
- Fire History
- Administrative FS Boundary
- Federal Wilderness Boundary
- County Boundary
- Private
- US Forest Service



OPERATIONS

DIV H

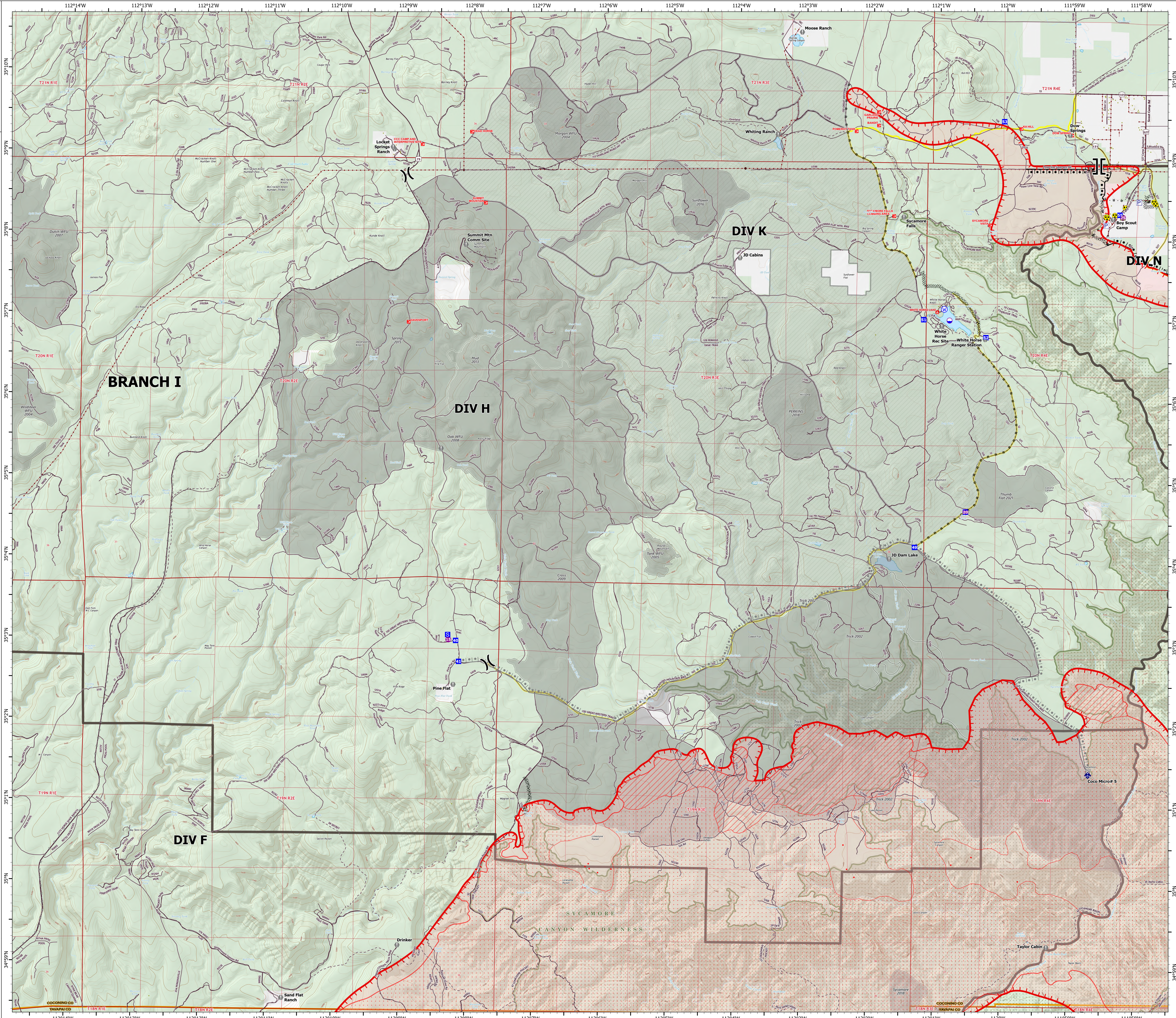
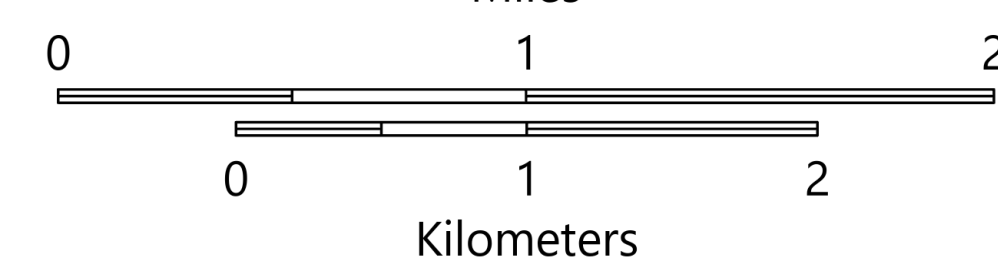
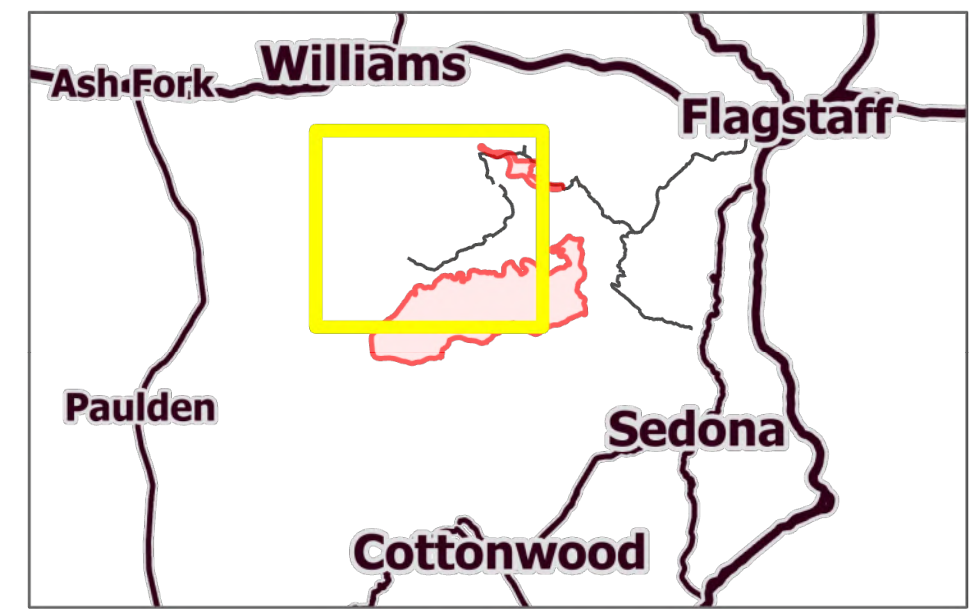
Rafael

AZ-PNF-863

6/26/2021

45,899 acres at 6/25/21 1530 hrs

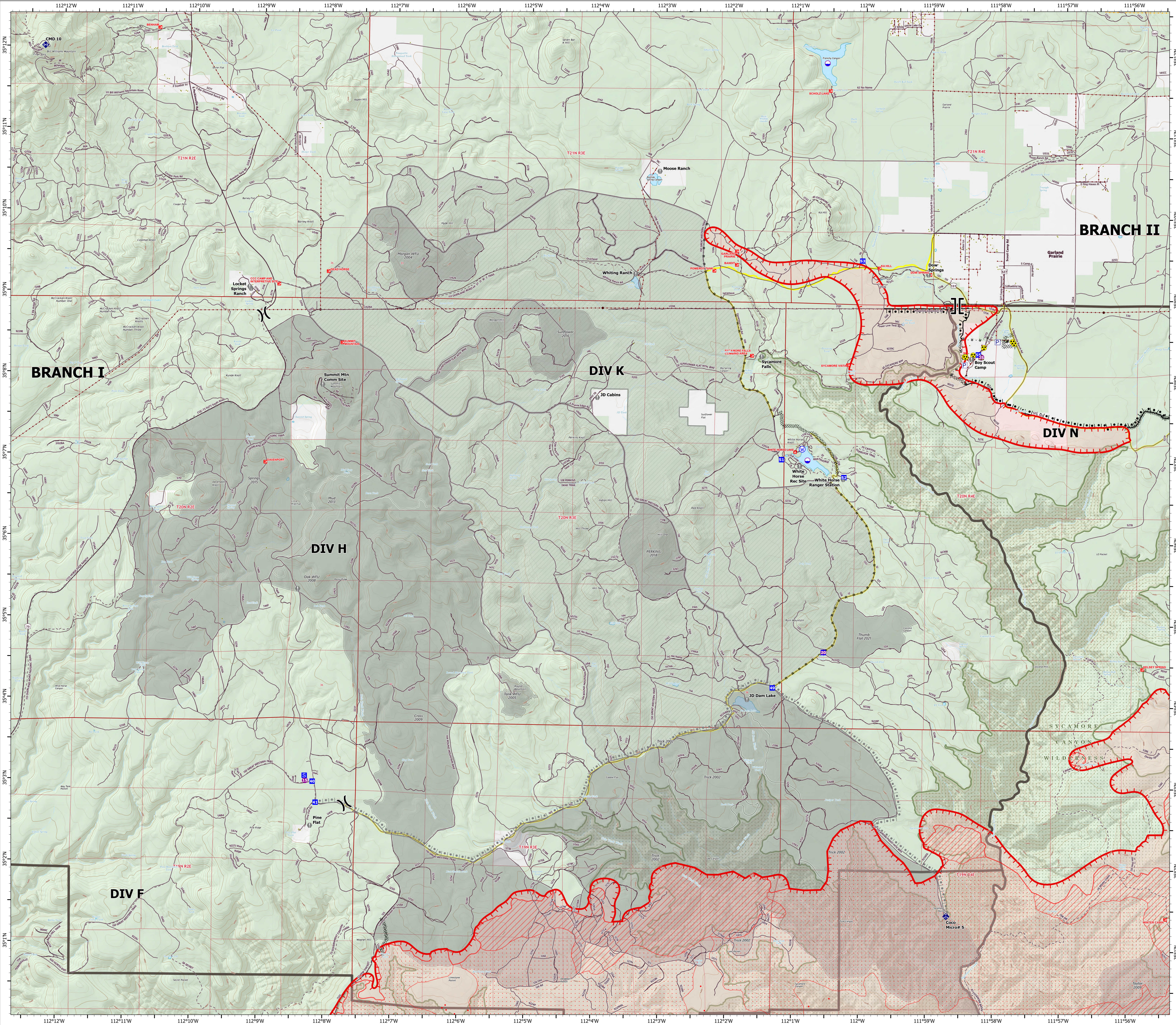
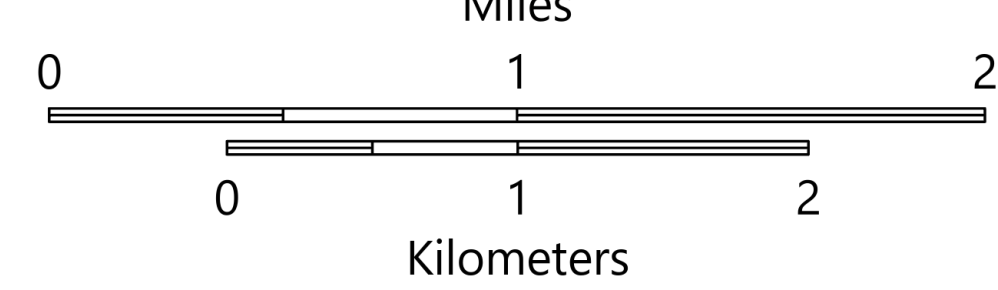
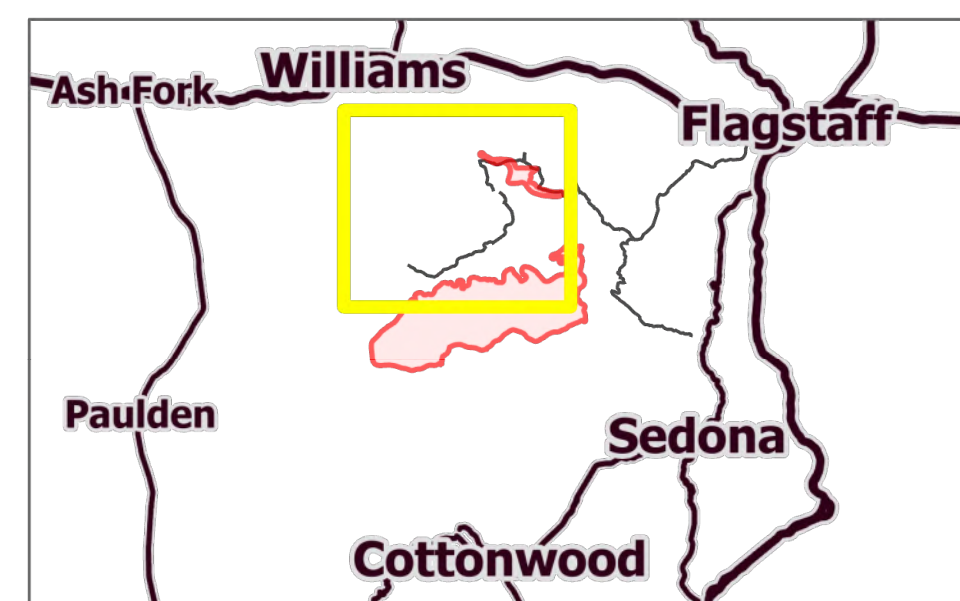
- Dip Site
- Helispot
- Division Break
- Branch Break
- Drop Point
- Staging Area
- Value at Risk
- Mobile Weather Unit
- Safety Zone
- Hazard
- Water Source
- Pump
- Water Tank
- IR Isolated Heat Source
- Campground
- Trailhead
- Structure
- Completed Burnout
- Completed Dozer Line
- Completed Hand Line
- Completed Road as Line
- Planned Burnout
- Planned Road as Line
- Planned Secondary Line
- Fire Edge
- Paved Roads
- Dirt (Not Paved)
- USFS Road
- Access Road
- Trail
- IR Heat Perimeter
- IR Intense Heat
- IR Scattered Heat
- Wildfire Daily Fire Perimeter
- Substation
- Transmission Line
- Fire History
- Administrative FS Boundary
- Federal Wilderness Boundary
- County Boundary
- Private
- US Forest Service



OPERATIONS

DIV K
Rafael
AZ-PNF-863
6/26/2021
45,899 acres at 6/25/21 1530 hrs

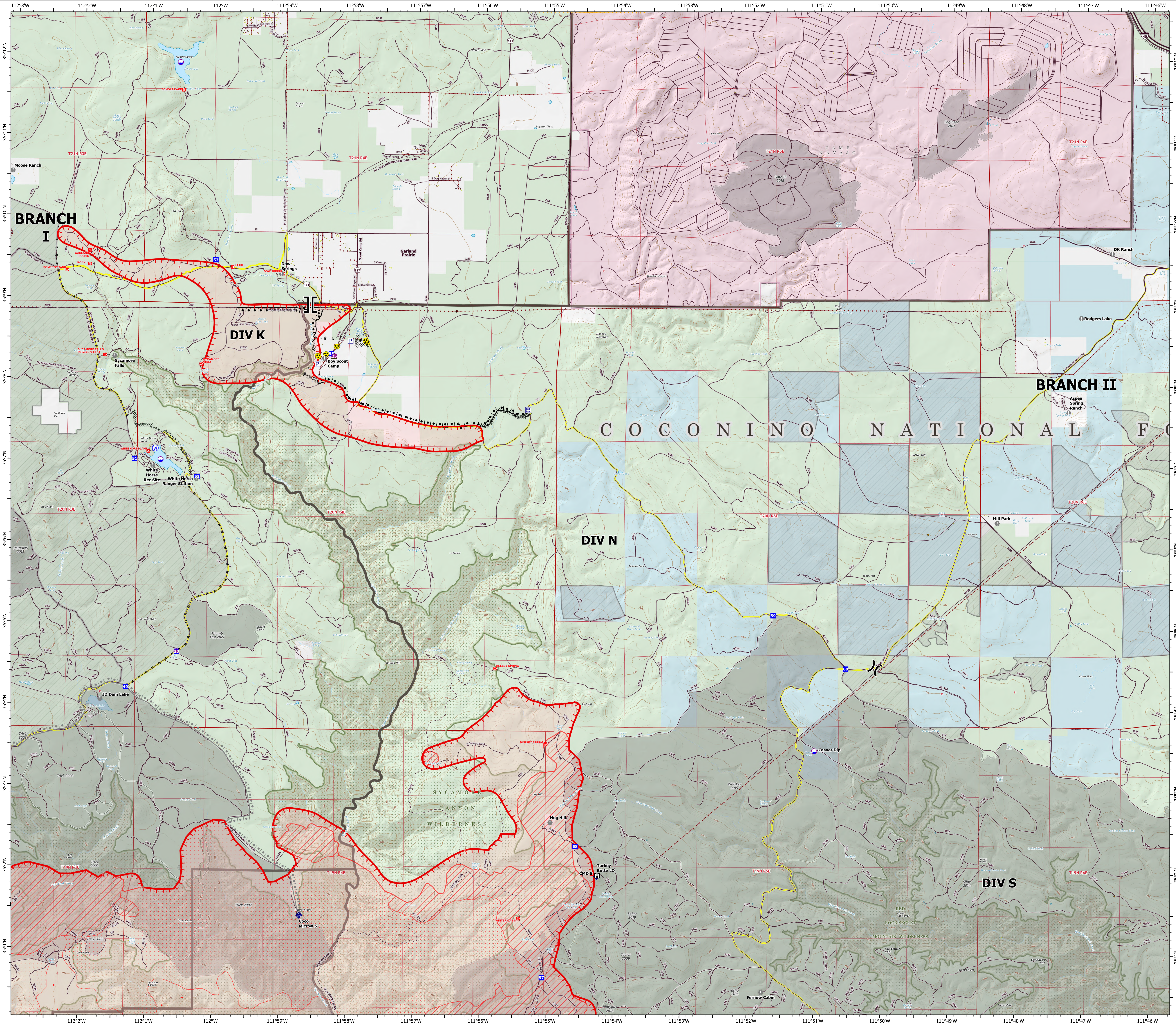
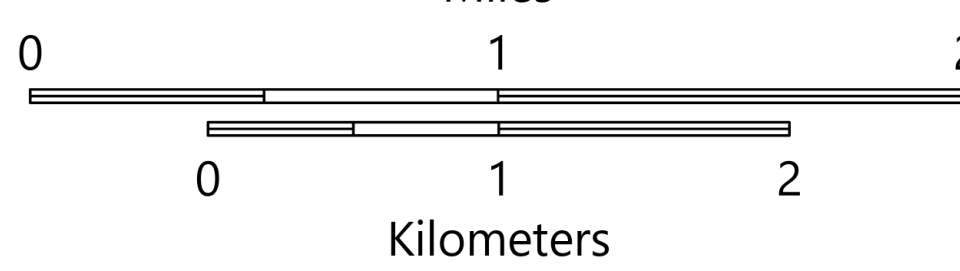
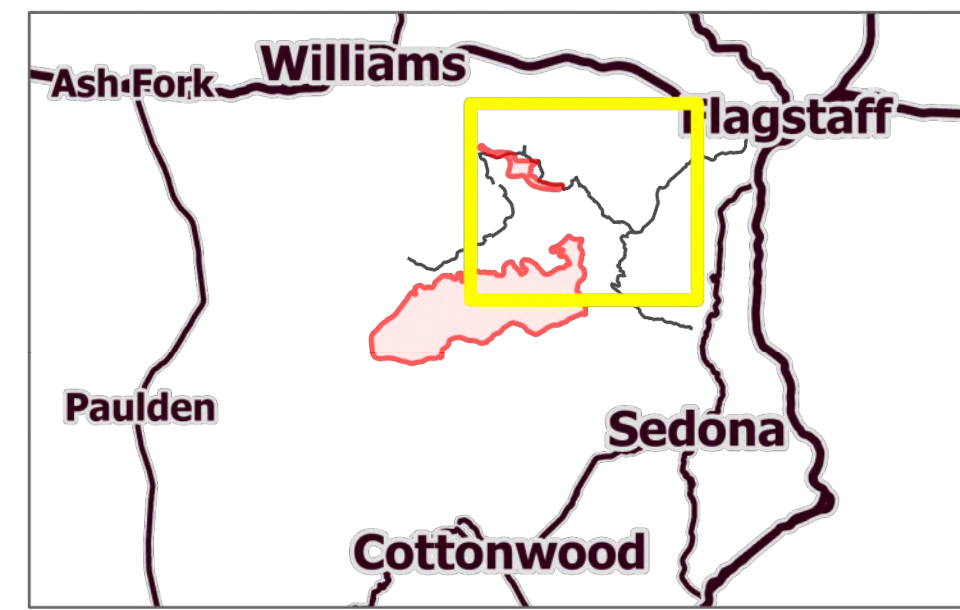
- Dip Site
- Helispot
- Division Break
- Branch Break
- Drop Point
- Staging Area
- Value at Risk
- Mobile Weather Unit
- Repeater
- Safety Zone
- Hazard
- Water Source
- Pump
- Water Tank
- IR Isolated Heat Source
- Campground
- Trailhead
- Structure
- Completed Burnout
- Completed Dozer Line
- Completed Hand Line
- Completed Road as Line
- Planned Burnout
- Planned Road as Line
- Planned Secondary Line
- Fire Edge
- Paved Roads
- Dirt (Not Paved)
- USFS Road
- Access Road
- Trail
- IR Heat Perimeter
- IR Intense Heat
- IR Scattered Heat
- Wildfire Daily Fire Perimeter
- Substation
- Transmission Line
- Natural Gas Liquid Pipeline
- Fire History
- Administrative FS Boundary
- Federal Wilderness Boundary
- County Boundary
- Private
- US Forest Service



OPERATIONS

DIV N
Rafael
AZ-PNF-863
6/26/2021
45,899 acres at 6/25/21 1530 hrs

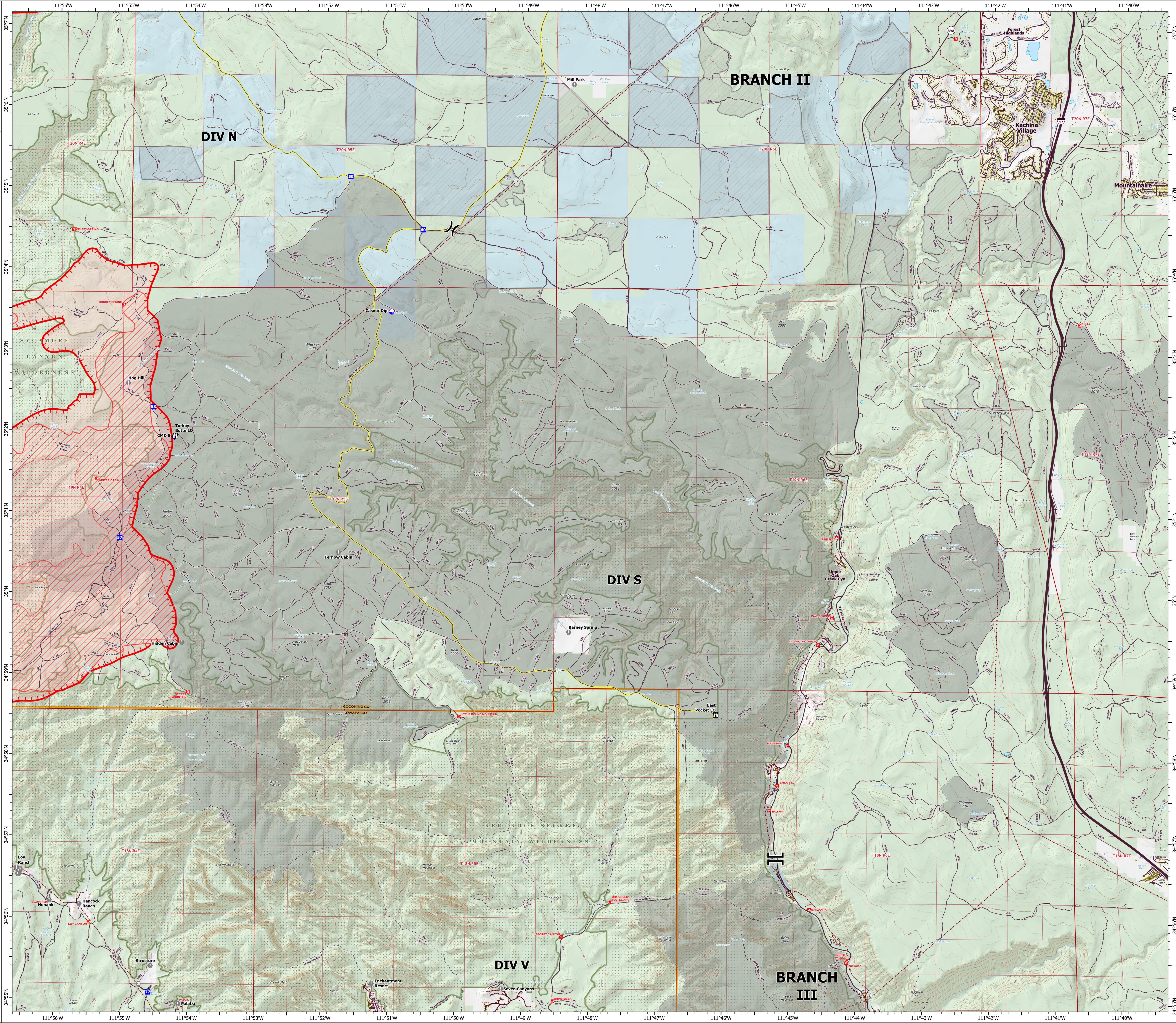
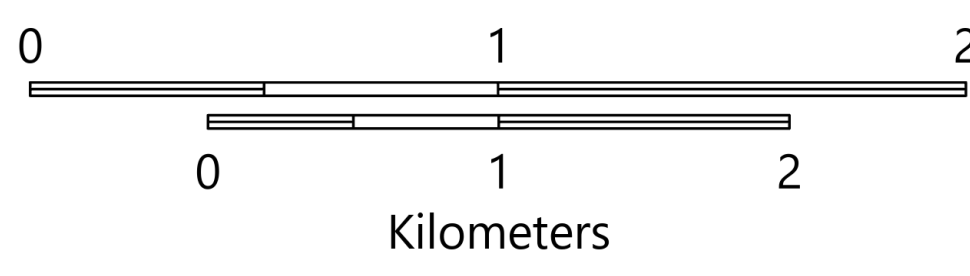
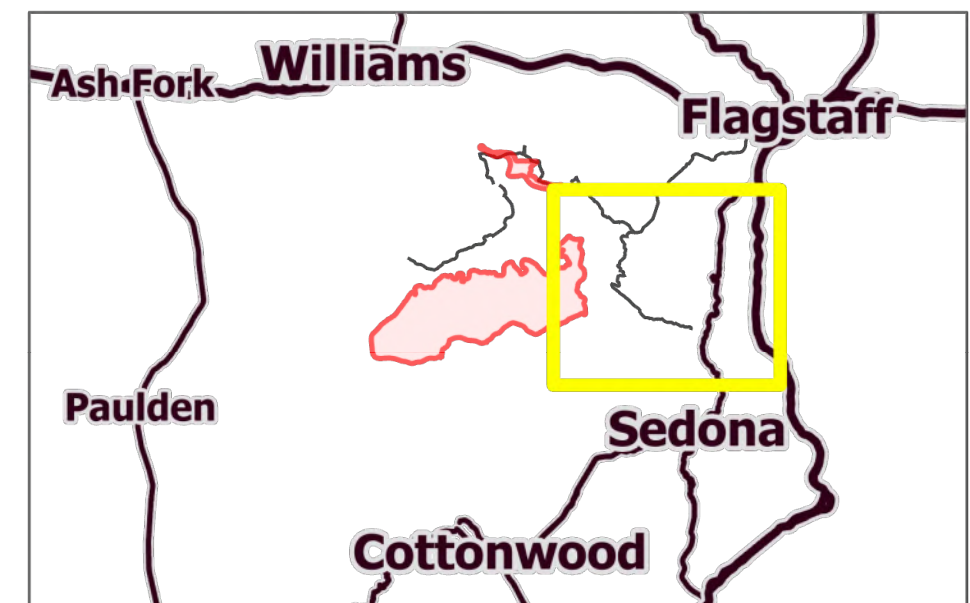
- Dip Site
- Helispot
- Division Break
- Branch Break
- Drop Point
- Lookout
- Value at Risk
- Mobile Weather Unit
- Repeater
- Safety Zone
- Hazard
- Water Source
- Pump
- Water Tank
- IR Isolated Heat Source
- Campground
- Trailhead
- Structure
- Completed Burnout
- Completed Dozer Line
- Completed Hand Line
- Completed Road as Line
- Planned Burnout
- Planned Secondary Line
- Fire Edge
- Primary Highway
- Paved Roads
- Dirt (Not Paved)
- USFS Road
- Access Road
- Trail
- Railroad
- IR Heat Perimeter
- IR Intense Heat
- IR Scattered Heat
- Wildfire Daily Fire Perimeter
- Substation
- Transmission Line
- Natural Gas Liquid Pipeline
- Oil and Natural Gas Well
- Fire History
- Fuel Treatment
- Administrative FS Boundary
- Federal Wilderness Boundary
- County Boundary
- Military
- Private
- State
- US Forest Service



OPERATIONS

DIV S
Rafael
AZ-PNF-863
6/26/2021
45,899 acres at 6/25/21 1530 hrs

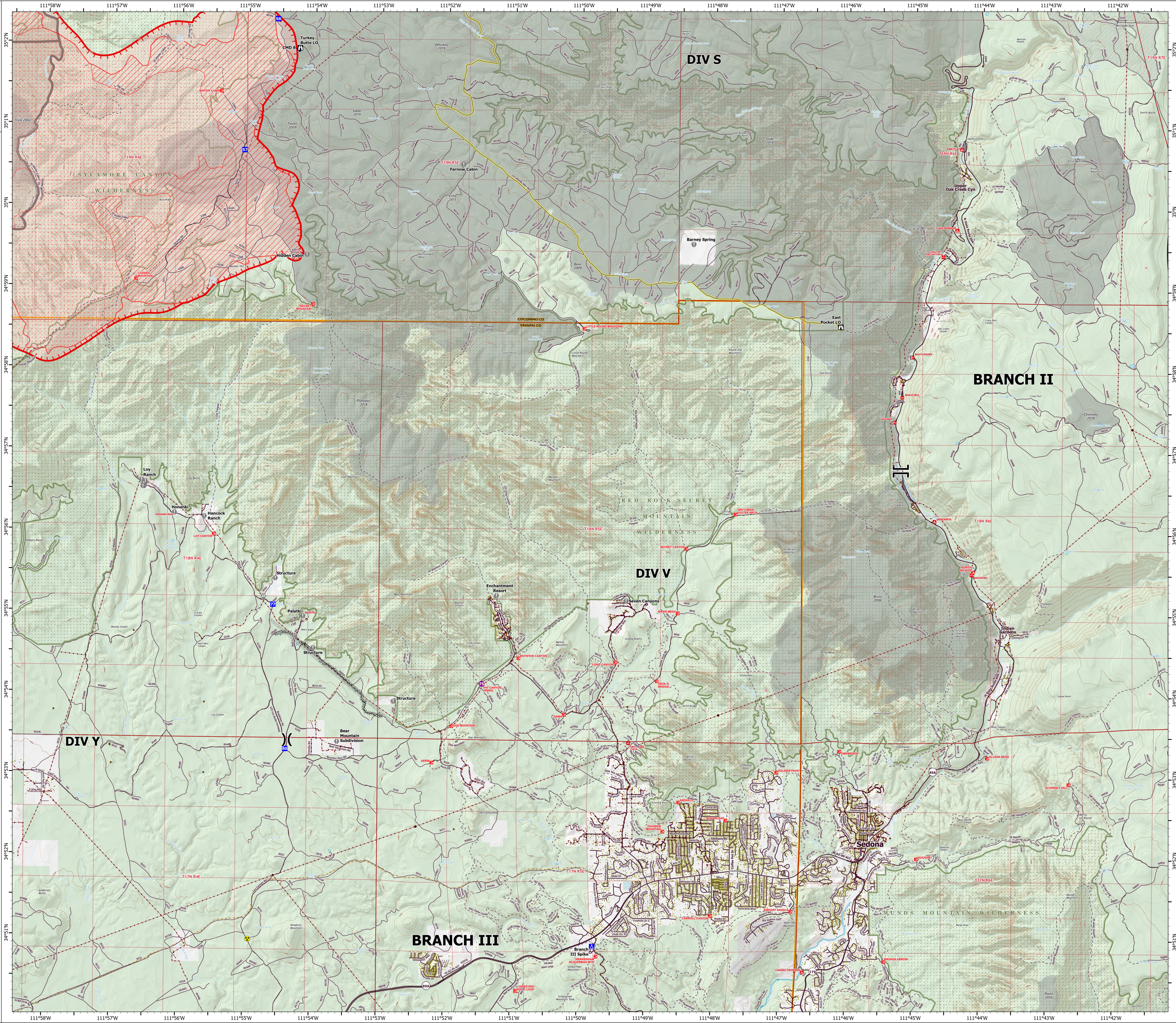
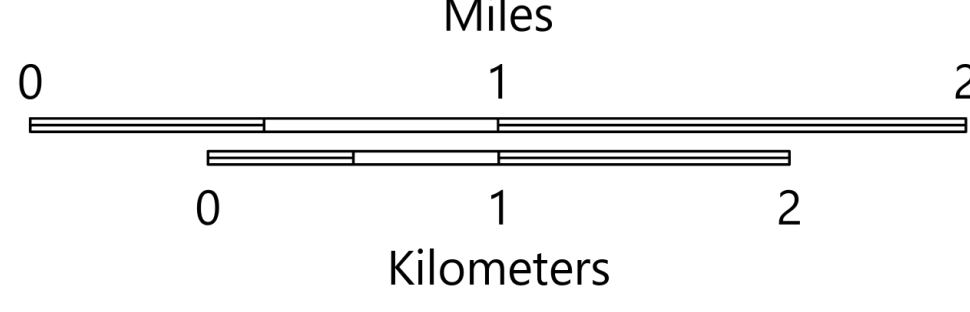
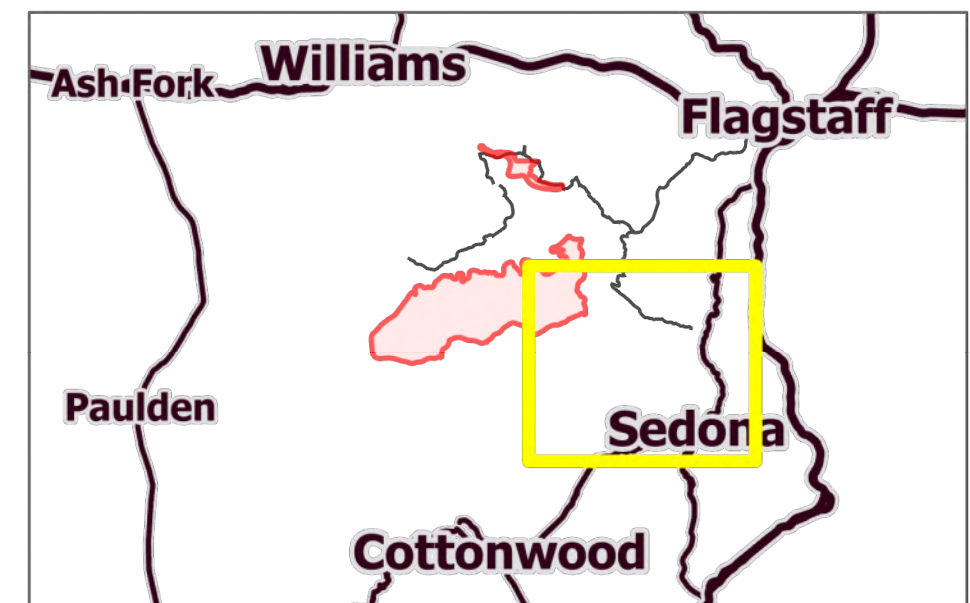
- Dip Site
- Division Break
- Branch Break
- Drop Point
- Lookout
- Value at Risk
- Gate
- Repeater
- Campground
- Trailhead
- Visitor Center
- Picnic Site
- Interpretive Site
- Structure
- Completed Hand Line
- Planned Dozer Line
- Fire Edge
- Primary Highway
- Secondary Highway
- Paved Roads
- Dirt (Not Paved)
- USFS Road
- Access Road
- Trail
- IR Heat Perimeter
- IR Intense Heat
- IR Scattered Heat
- Wildfire Daily Fire Perimeter
- Substation
- Transmission Line
- Oil and Natural Gas Well
- Fire History
- Fuel Treatment
- Administrative FS Boundary
- Federal Wilderness Boundary
- County Boundary
- Local or State Parks
- Private
- State
- US Forest Service



OPERATIONS

DIV V
Rafael
AZ-PNF-863
6/26/2021
45,899 acres at 6/25/21 1530 hrs

- Helispot
- ⌋ Division Break
- ⌋ Branch Break
- Drop Point
- ▲ Camp
- Ⓜ Lookout
- Ⓜ Value at Risk
- Ⓜ Gate
- Ⓜ Repeater
- Ⓜ Hazard
- Ⓜ Campground
- Ⓜ Trailhead
- Ⓜ Visitor Center
- Ⓜ Picnic Site
- Ⓜ Interpretive Site
- Structure
- Ⓜ Completed Dozer Line
- Ⓜ Completed Hand Line
- Ⓜ Planned Dozer Line
- Ⓜ Fire Edge
- Ⓜ Primary Highway
- Ⓜ Secondary Highway
- Ⓜ Paved Roads
- Ⓜ Dirt (Not Paved)
- Ⓜ USFS Road
- Ⓜ Access Road
- Ⓜ Trail
- Ⓜ Tunnel; Bridge
- Ⓜ Runway
- Ⓜ IR Heat Perimeter
- Ⓜ IR Intense Heat
- Ⓜ IR Scattered Heat
- Ⓜ Wildfire Daily Fire Perimeter
- Substation
- Ⓜ Transmission Line
- Oil and Natural Gas Well
- Ⓜ Oil and Natural Gas Pipeline
- Ⓜ Fire History
- Ⓜ Fuel Treatment
- Ⓜ Administrative FS Boundary
- Ⓜ Federal Wilderness Boundary
- Ⓜ County Boundary
- Ⓜ County
- Ⓜ Local or State Parks
- Ⓜ Other Federal
- Ⓜ Private
- Ⓜ State
- Ⓜ US Forest Service



OPERATIONS

DIV Y

Rafael

AZ-PNF-863

6/26/2021

45,899 acres at 6/25/21 1530 hrs

- Dip Site
- Helispot
- Division Break
- Branch Break
- Drop Point
- Camp
- Value at Risk
- Gate
- Hazard
- IR Isolated Heat Source
- Trailhead
- Visitor Center
- Interpretive Site
- Structure
- Completed Dozer Line
- Completed Hand Line
- Planned Dozer Line
- Fire Edge
- Secondary Highway
- Paved Roads
- Dirt (Not Paved)
- USFS Road
- Access Road
- Trail
- Railroad
- IR Heat Perimeter
- IR Intense Heat
- IR Scattered Heat
- Wildfire Daily Fire Perimeter
- Substation
- Transmission Line
- Oil and Natural Gas Well
- Oil and Natural Gas Pipeline
- Fire History
- Administrative FS Boundary
- Federal Wilderness Boundary
- County Boundary
- Local or State Parks
- Private
- US Forest Service

